

EAST of Asheville Studio Tour Takes Place - Oct. 13 & 14, 2012

Verdant valleys, whimsical waterfalls, lyrical leafing, magical mountains - it's just the right chemistry to produce one of the top climates for art in the world. On Oct. 13 and 14, 2012, from 10am-6pm, you are invited to get a first hand look at what goes on behind the scenes in Asheville's wonderful world of art and craft. The EAST of Asheville Studio Tour is happening once again, and just in time for some crafty holiday shopping.

This will be the third year the tour is participating in the October national celebration of American Craft Week (Oct. 5 - 14). Throughout the country, celebrations are being planned to highlight and support our handcrafting traditions. On the EAST of Asheville Studio Tour stops, you will get to see these handwork demonstrations by The Tour's numerous nationally recognized artisans. Studio stops encompass artists' studios in East Asheville, Swannanoa, Black Mountain and Fairview.

Artists will have items for sale in all price ranges to suit your budget. You'll have the opportunity to buy tasteful holiday gifts while supporting the artists that make the Asheville art scene so special. Keeping your holiday spending dollars local this season helps the entire Asheville economy thrive.

This year for the first time, The Tour awarded scholarships to two outstanding artists from local high schools:

Carly Owens is a student of at Charles D. Owen High School and a student of Karen Jones. Owens talks about her inspirations and future plans, "I am most inspired by people. I love to capture their unique personalities and spirit in my work. I've always had an affinity for art and I've been making pieces ever since I was a young child. My mother told me that I picked up my first

paintbrush at two and I never wanted to set it down. As for my future plans, I hope to go to college for design and fashion management. I've started working on my own fashion designs, and it's a great way for me to incorporate my artwork in with my love for fashion." Owens will be showing her work at artist Lynette Miller's LC Miller Studios in Black Mountain, stop B45 during the tour.

Zoe McElya is a student at A C Reynolds High School and is a student of Mary Briden. McElya states, "I love to take an image that would otherwise be relatively ordinary and turn it into something magical. I dig in the depths of my imagination for how to make my paintings different, unique. I also strive to make sure my work has impact, both emotionally and visually, because I believe it's not art unless it makes you feel something. I have been creating since about age 3 - ever since I could stick my fingers in paint and smear them on some paper! Concerning the future, I know that I'll never stop drawing/painting. It would be fantastic if I was getting paid to do what I love. I'm going to carry on creating and see where it takes me!" McElya will be showing her paintings in Fairview at Catherine Vibert's Catvibe Creative Photography Studio, stop F5 on the tour.

Come on out and see the work of these talented young students, celebrate American Craft Week, enjoy the scenic drive and support your local artists and crafters while getting in some early holiday shopping. It's a unique and rewarding way to spend an autumn weekend in the mountains.

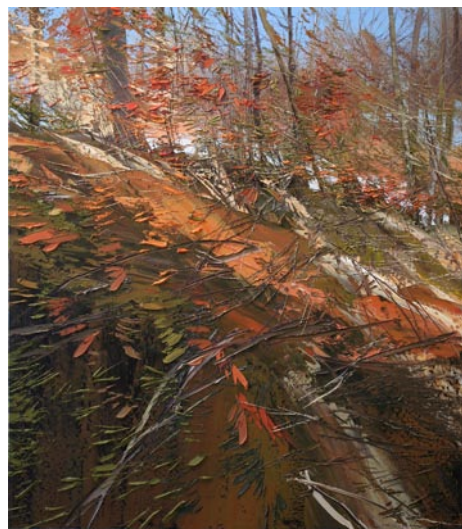
For further info check our NC Institutional Gallery listings or call 828/686-1011. A tour website and downloadable map is available at (www.EastStudioTour.com).

The Haen Gallery in Asheville, NC, Features Works by Lynn Boggess

The Haen Gallery in Asheville, NC, will present the exhibit, *Lynn Boggess: New Work 2012*, on view from Oct. 13 through Nov. 30, 2012. A reception will be held on Oct. 20, from 5:30-7:30pm.

Boggess is one of the most unique and noteworthy American landscape painters of the 21st Century. He resides in West Virginia, a state whose diverse mountains, forests, and rivers provide abundant inspiration for the artist's plein air paintings. In place of brushes Boggess uses palette knives and trowels to thickly layer the broad sweeping strokes and exquisite fine detail that capture all the colors of the seasons in rushing rivers, snow covered hillsides, and thick forest vegetation. Boggess' work is recognized throughout the country for its incredible three-dimensional texture, rendered solely in oils. These remarkable landscapes bridge the gap between Abstract Expressionism and Photorealism.

The Haen Gallery is located on Biltmore Avenue between the City Bakery and ED Boudreaux's. There is a parking garage at the Aloft hotel across the street, another



Work by Lynn Boggess
garage just up the hill, as well as street parking.

For further information check our NC Commercial Gallery listings, call the gallery at 828/254-8577 or visit (www.thehaengallery.com).

The Bender Gallery in Asheville, NC, Features Group Glass Exhibit

The Bender Gallery in Asheville, NC, will present the exhibit, *Vitric Compositions: Assemblages in Glass*, which explores the work of three internationally collected glass artists who construct glass sculptures by assembling individual pieces of glass by fusing or laminating. The exhibition featuring works by Martin Kremer, Toland Peter Sand, and William Zweifel, will be on view from Oct. 5 through Dec. 28, 2012. A reception will be held on Oct. 5, from 5-8pm.

Kremer, Sand and Zweifel's sculptures embody items used in daily life. Sand incorporates alphabets and symbols that could be used in language or in complex mathematical equations into even more complex geometric sculptures. Kremer



Work by Toland Peter Sand
creates edifices and what could be mundane items, such as a bowl or ladder, out of tiny
continued above on next column to the right

individual components. Both Sand's and Kremer's work is exceptionally precise and technical. Zweifel's assemblages are more fluid and organic in nature. He weaves individual strips of glass into what could be a comforting blanket or a remnant of clothing. The simple piece of fabric is rendered more symbolic by being draped over a chunk of granite, a steel sculpture or a block of crystal formed to reference a wall or frame of some kind. Viewing these artists'

work causes one to ponder the creativity, energy, and focus it must take to create such dramatic sculptures.

The Bender Gallery is the only gallery in the North Carolina dedicated exclusively to studio art glass and houses the region's largest glass art collection.

For further information check our NC Commercial Gallery listings, call the gallery at 828/505-8341 or visit (www.thebender-gallery.com).

Asheville Gallery of Art in Asheville, NC Features Works by Reda Kay

The Asheville Gallery of Art in Asheville, NC, will present the exhibit, *The Eye & Imagination*, featuring works by Reda Kay, on view from Oct. 5 - 31, 2012. A reception will be held on Oct. 5, from 5:30-8pm.

The exhibition features landscapes implying the mindful passage of shared time and evolution emphasizing our journey as uniting our human spirit and the natural environment. Kay's contemporary, experimental art is achieved using spectrums of watercolor, acrylic, oil and texturing materials on canvas, board and paper.

Kay's accomplishments as a photographer created her desire to expand her means of expression in the visual arts. She continues to develop her skills in workshops with nationally known artists and dialogues with artists and craft people around the world. Kay's work, inspired by her continuing worldwide travels, and the emotions evoked are evident in her works of bold and muted color and symbolism capturing the essence of place.

Kay uses watercolor, acrylic, inks, and oil on paper, canvas, and board to create her art. She builds her paintings layer by layer, believing that layering metaphorically captures the essence of her creative process toward the emotional content.

Kay has exhibited in solo shows and won



Work by Reda Kay

awards from many Western North Carolina juried exhibitions. Her artwork can be found in the Asheville Gallery of Art, and in private collections around the USA and internationally.

For further information check our NC Institutional Gallery listings, call the gallery at 828/251-5796 or visit (www.ashevillegalery-of-art.com).

The Gallery at Studio B in Asheville, NC, Features Works by Brennen McElhaney

The Gallery at Studio B in Asheville, NC, will present the exhibit, *Along the Way*, featuring Southeastern landscape paintings by Asheville artist, Brennen McElhaney, on view from Oct. 4 through Nov. 10, 2012. A reception will be held on Oct. 4, from 5:30-7:30pm.

The collection of landscapes is in part a visual journal highlighting places the artist has been. In addition to the Asheville area (where the artist makes his home) the landscapes include views from Saluda, Valle Crucis, Knoxville, Chattanooga, Wilmington, and Hilton Head. This will be McElhaney's first solo show in North Carolina.

McElhaney was born and raised in Santa Barbara, CA. He graduated from Rhode Island School of Design in 1990 with a degree in illustration. In 2005, he and his family, relocated from California to Asheville. McElhaney is a signature member of the Western North Carolina Plein Air Painters group and a strong advocate of the local arts community. He is creator and curator of the website (AVLarts.com) which promotes the visual arts in the Asheville area by listing local art events, artists, galleries and art resources. McElhaney works as a freelance

illustrator and art director, his main client being Oodles World, an Asheville based, family entertainment company.

McElhaney is represented in North Carolina by Gallery at Studio B and Alta Vista Gallery.

The Gallery At Studio B is located on Weaverville Hwy. in Asheville and features original work by regional, national and international artists. Exhibits rotate throughout the year showcasing original work ranging from oil and acrylic paintings, pastel drawings and ceramics to jewelry, sculpture and woodworking. Studio B Custom Framing & Fine Art was established in 1981 by Patti Bell in downtown Lancaster, OH, after 10 years of employment as a custom framer in Columbus. Her clients include museums, artists, galleries and private collectors from Connecticut to California. She moved her business to Asheville in October of 2006 and continues to offer the exceptional custom picture framing.

For further information check our NC Commercial Gallery listings, call the gallery at 828/225-5200 or visit (www.galleryatstudiob.com).

65th Annual Craft Fair of the Southern Highlands Takes Place in Asheville, NC - Oct. 18-21, 2012

The 65th Annual Craft Fair of the Southern Highlands will take place at the US Cellular Center (formerly the Asheville Civic Center) in downtown Asheville, NC, from Oct. 18 - 21, 2012, from 10am-6pm, Thursday - Saturday, and 10am-5pm Sunday.

For 65 years the Craft Fair of the Southern Highlands has set the standard for fine crafts shows across the Southeast and the nation. Twice a year the finest craftspeople working in the Appalachian mountains come together in Asheville to share their love of craft and sell their work to collectors

who come from all across the country to be inspired and support the creative economy.

All Craft Fair exhibitors have become members of the Southern Highland Craft Guild through a rigorous jury process, insuring the finest quality of work will be showcased. Exhibitors are residents of the southern Appalachian region, representing nine states from Maryland to Alabama. Craft media featured are: clay, jewelry, fiber, wood, glass, paper, metal, mixed media, and natural materials. Styles range from

continued on Page 49