

# Corrigan Gallery LLC

continued from Page 9

Shack residency in New York in 2007 and was the 2006 winner of the Griffith/Reyburn Lowcountry Artist's Award. The resulting solo show at City Gallery Waterfront in Charleston then led to her being chosen as the poster artist for the Piccolo Spoleto program "Opera is for Everyone." She has received several grants from the South Carolina Arts Commission and the Lowcountry Quarterly Arts Grant Program.

In 2004 Walker organized "The Scrolls," an anti-war project involving both national and international artists that has been exhibited in Charleston, Cincinnati and Washington, DC. In 2014 she began the Red Suitcase project with a suitcase being repurposed with several artists' works fitted into it and the suitcase exhibit travels in its new life form. She has worked at print studios in New York, Italy and Ireland as well as South Carolina.

This show is comprised of new oils exploring the characters Walker has been putting into place over the last years. In her words, "As a painter and printmaker, my goal is to represent human comedy and tragedy in my art – our virtues, sorrows, and foibles fascinate me. My work is narrative with a mix of iconic characters, some human, some imaginary. Myth, poetry, drama, dance, and music serve as inspiration, sparking ideas and themes to explore. As I continue, the characters that emerge have become more unusual, not realistic or in a representational space. They are symbolic to me as I search for meaning through the vocabulary of art."

Walker's characters illicit responses of laughter and curiosity, sadness and resolve – all imitating life but presenting it in a new and approachable manner. Many of her



Work by Mary Walker

figures reappear year after year becoming like old friends we look forward to seeing. Do come meet them so they become your friends too.

The Corrigan Gallery presents art with presence and a future instilled with intellect. Varied, thoughtful, provoking works are presented in an intimate space for the viewing pleasure of all. Bringing 27 years of Charleston art experience to collectors and presenting artists decades of creating as well as those in the early years of their careers, the gallery provides a fresh alternative to the traditional southern art scene. The gallery has expanded its presentations with the works from the estate of Elizabeth O'Neill Verner and works of other earlier Charleston artists. Located in the heart of the historic district, the gallery combines the charm of the old city of Charleston with a look to the future. Paintings, drawings, fine art prints, photography and sculpture are readily available for the discriminating collector.

For further information check our SC Commercial Gallery listings, call the gallery at 843/722-9868 or visit ([www.corrigan-gallery.com](http://www.corrigan-gallery.com)).

## Robert Lange Studios in Charleston, SC, Features Works by Nathan Durfee

Robert Lange Studios in Charleston, SC, will present *The Joy of Drifting*, featuring contemporary narratives by Nathan Durfee, on view from Oct. 2 - 30, 2015. A reception will be held on Oct. 2, from 5-8pm.

The exhibition is a collection of narrative paintings investigating the journey of a panda. Durfee's whimsical, bordering on surreal painting style, combines combinations of pattern and cross-hatching. This most recent body chronicles the artist's journey, allegorically presented through the artist's characters.

Durfee says, "Can we drift with purpose? The show is themed around a tiny panda and his boat. Without rudders, sails, or oars, his adventures are dictated by the will of the current. Due to his small size and lack of tools he is forced to become an observer, joining us in discovering his world."

Durfee's emblematic works speak not only of the artist's own existential journey but also a universal human experience. Often painted in series, the characters experience everything from heartbreak to frustration as reactions to internal and external stimuli.

Durfee says about the painting *Panda Gave his Hat to the Sea*, "This piece focuses on how we handle adversity. The panda is riding, hanging on dearly to his boat while he crashes into a wave. A seagull flies effortlessly above, designed to handle the rough weather."

Durfee's painting style is a contemporary update of folk meets pop-surrealism and continually exceeds the expectations of



Work by Nathan Durfee

collectors. This series in particular demonstrates Durfee's ability to meticulously render small details and textures and in the same painting, the liberty to softly paint fluffy clouds.

"I can now choose what stylization to use in order to accentuate a moment within the piece," says Durfee, "choosing the level of detail that best lends itself to the focus of the storyline."

Durfee is a graduate of Savannah College of Art and Design and has exhibited with different galleries across the United States and is feverishly collected in Germany as well as Japan.

For further information check our SC Commercial Gallery listings, call the gallery at 843/805-8052 or visit ([www.robertlangestudios.com](http://www.robertlangestudios.com)).

## Hagan Fine Art Gallery & Studio in Charleston, SC, Features Works by Adrian Chu Redmond

Hagan Fine Art Gallery & Studio in Charleston, SC, will present *Along the Way*, featuring new original oils, in a one woman show, by Adrian Chu Redmond, on view from Oct. 2 - 31, 2015. A reception will be held on Oct. 2, from 5-8pm.

The exhibit is offered in celebration of Page 10 - Carolina Arts, October 2015

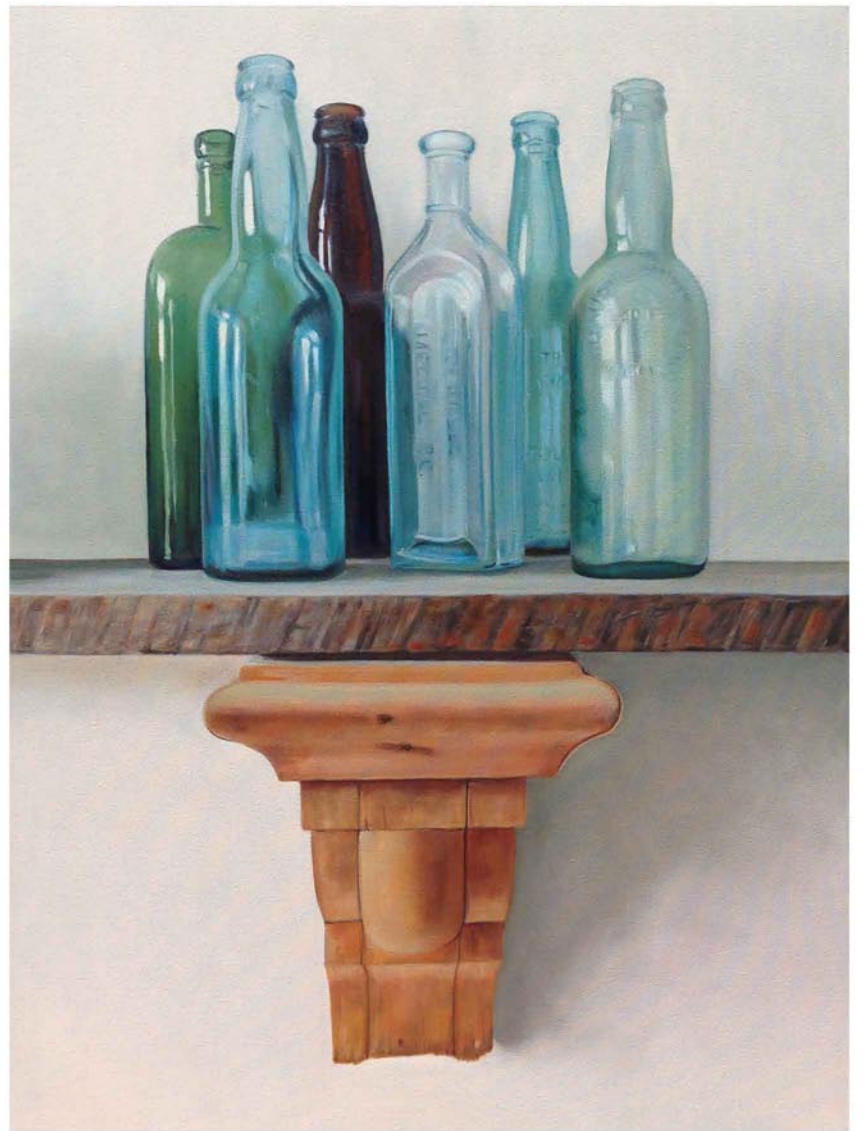
the artist's recent three-week-long walk through Northern Spain.

There will be three opportunities to meet and talk with Redmond about her work:

On Thursday, Oct. 1, from 5-6pm, Redmond will be giving an informal talk at

continued on Page 11

# WELLS GALLERY



SALLY THARP, *SHELVED*, 48X36, OIL ON LINEN

THE SANCTUARY AT KIAWAH ISLAND  
1 SANCTUARY BEACH DR, KIAWAH, SC 29455  
843.576.1290  
[WWW.WELLSGALLERY.COM](http://WWW.WELLSGALLERY.COM)



## Karen Burnette Garner

~Artist~

Represented by  
**The Treasure Nest Art Gallery**  
1055 Johnnie Dodds Blvd. (Crickentree Village)  
Mount Pleasant, SC 29464  
843.216.1235

For more information: [www.karenburnettegarner.com](http://www.karenburnettegarner.com)

