

Asheville Gallery of Art in Asheville, NC, Features Works by New Members

The Asheville Gallery of Art in Asheville, NC, will present *New Year-New Members*, featuring an exhibit of works by new gallery members: Jennine Hough, Everett Schmidt, Mary Webster and Eileen Ross, on view from Jan. 1 - 25, 2013. A reception will be held on Jan. 1, from 1-4pm.



Work by Jennine Hough

Jennine Hough, a North Carolina native, received her BA in art education from The University of North Carolina and her Masters in Fine Arts from The University of North Carolina at Greensboro.

Hough continued her studies as the recipient of a scholarship to The Skowhegan School of Painting and Sculpture, as a fellow to The MacDowell Colony and as the recipient of a NEA/SECCA grant.

After an early career teaching painting and art history in the Atlanta area, Hough focused her efforts solely on painting. She has had solo exhibits in New York, Washington, Atlanta, Santa Fe, Aspen and other cities and has participated in many group exhibitions nationwide.

Hough is currently teaching at Blue Ridge Community College, in the Super Saturdays program at UNC-Asheville and is presenting a variety of workshops in painting. She is continuing her passion for the portrait and is also painting still lifes and interiors. She is a member of the Asheville Gallery of Art where she exhibits her paintings.

Everett Schmidt offered the following about his work. "When I look at a painting, I look for emotion. When I don't see it, I move on. As an artist I create emotion with the use of bold form and color. Rather than paint only what I see, I try to capture the

spirit of the study. I have been called an expressionist because I paint from a subjective perspective. Pastels, the form that allows me to paint rapidly and create the immediate response I feel, seems to be the best medium for me."

Mary Webster graduated in 1986 from the Boston School of the Museum of Fine Arts and Tufts University. She earned a diploma, teaching certificate, BFA and MFA, with a special emphasis on painting in the styles of the Old Dutch Masters. After years of study, she was faced with the question most artists face, "How could make a living as an artist?"



Work by Mary Webster

After a year, Webster decided to join an established Boston decorative painting company where she learned glazing techniques and faux finishes. Expanding her education in order to build a portfolio full of fine art, decorative painting and personal expression. She was able to pay the rent!



Work by Eileen Ross

For the past twenty years, Webster's company, Mary Webster & Associates, have created a wide range of murals for multiple clients in Boston, Cape Cod, Florida and

continued above on next column to the right

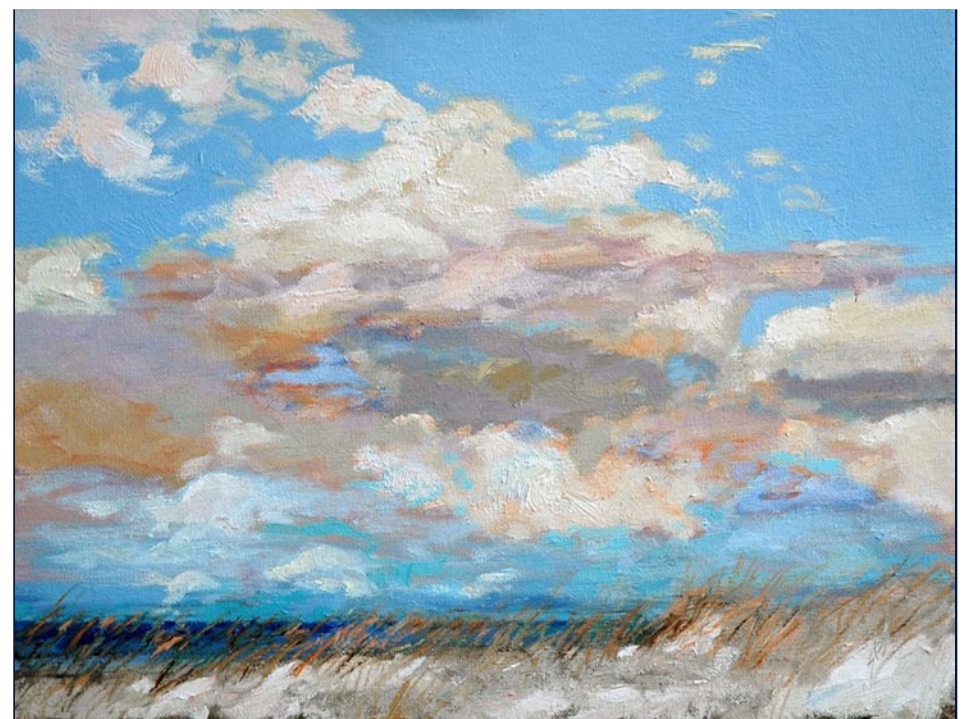
the Southeast. Transforming a wide variety of residential and commercial spaces with color and texture.

About three years ago, Webster saw a segment on *Sunday Morning* featuring Asheville, NC. She said to herself, "Hmm! I want to be surrounded by artists, food crafters and musicians!" So she started her new journey! In 2011, MW&A moved from Cape Cod, MA, to Asheville, NC. Her dream and passion is to use her years of ex-

perience and collaborate with emerging and established artists in the vibrant and art-rich community of Asheville.

Eileen Ross is a studio artist and creativity coach working in Black Mountain, NC. She has been painting professionally since 1990, and her work has received awards in juried shows in New York, metropolitan Washington, DC, and in North Carolina. She has had several one-woman shows,

continued on Page 20



Morning Sky Over Lake Michigan

11 x 14 inches

WILLIAM JAMESON WORKSHOPS 2013

"The Art of Painting Snow," Saluda, NC	January 17 - 19
"Working Large Without Fear," Saluda, NC	March 21 - 23
"Spring on the Blue Ridge," Saluda, NC	May 23 - 25
"Abaco Islands," Bahama	June 17 - 21
"Tuscany, Italy"	September 17 - 24
"Fall on the Blue Ridge," Saluda, NC	October 21 - 25

Each William Jameson Painting Workshop is designed to be an educational and entertaining experience. Along with exhilarating travel, students from beginner to advanced will receive one-on-one instruction in oil, watercolor or acrylic and pen and ink sketching.

Whether the travel is down the mountain or to the Bahamas or Italy, you will be with like-minded folks who share your love of art. There will be six hours of instruction each painting day at sites I have carefully selected for their architectural interest or appealing landscapes. Each day will include demonstrations, critiques and help with photography for use in painting your own work of art. All workshops include a "welcome" party and some workshops include private museum tours or excursions to special venues that we have cultivated over the years.

Non-painter companions are always welcome! Our workshop trips take us to breathtaking places where there is something of interest for everyone. Of course, special pricing is available for these companions. Please see specific workshop information for additional descriptive information.

Detailed info is available at www.williamjameson.com or call 828.749.3101.