

Some Exhibits That Are Still On View

Our policy at *Carolina Arts* is to present a press release about an exhibit only once and then go on, but many major exhibits are on view for months. This is our effort to remind you of some of them.



"Fit & Flare Coat" by Liz Spear & Karen Swing - Photo by Diana Gates Photography

The Folk Art Center in Asheville, NC, is presenting *Inspiration*, featuring collaborative works by members of the Southern Highland Craft Guild, on view on the second floor, Main Gallery, through Jan. 17, 2021. The exhibition features 22 collaborative objects by 43 makers of the Southern Highland Craft Guild who specialize in different media. All products are available for purchase, online and in the gallery. Shop online with the link (<https://www.southernhighlandguild.org/product-category/exhibits/main/>). For further information call the Center at 828/298-7928 or visit (www.southernhighlandguild.org).



Salvador Jiménez-Flores, "The Resistance Of The Hybrid Cacti" (Detail), 2017. Photo courtesy of the artist.

The Center for Craft in Asheville, NC, is presenting *Sleight of Hand*, on view in the Bresler Family Gallery, through Jan. 22, 2021. The exhibit brings together eleven works by six contemporary artists of color working in ceramics who use humor as a tool to navigate a range of pressing social issues. For these artists, humor is not merely an aesthetic choice; it is also a tool of resistance, resilience, and healing. The deliberate use of humor in ceramics traces back to the 1950s and 1960s Bay Area Funk art. However, in recent years, a younger and far more diverse generation of artists has revitalized this artistic strategy. This exhibition highlights this critical shift in the field of ceramics through the lens of artists of color. While the exhibition focuses on clay, the objects on display point to an expanded field that moves beyond sculpture to include video and paintings featuring ceramics. Participating artists include: Diana Yesenia Alvarado, Natalia Arbelaez, Salvador Jiménez-Flores, Yvette Mayorga, Woody De Othello, and Maryam Yousif. The exhibit was curated by Angelik Vizcarrondo-Laboy. For further information call the Center at 828/785-1357 or visit (www.centerforcraft.org).

The University of North Carolina at Greensboro, NC, is presenting *Ties that Bind: Selections from the Collection*, on view in the Weatherspoon Art Museum's 2nd Floor: The Gregory D. Ivy and the Weatherspoon Guild Galleries, through Feb. 14, 2021. John Fawcett wrote a hymn on the theme in 1800. Bruce Springsteen took a different approach in an eponymous song popular in 1980. Whether entwined in fellowship with kindred spirits or stretched to the point of breaking, the ties that bind us to one another are often some of the most significant markers in our lives. *Ties that Bind* explores the various types of relationships that define, brighten, aspire, or perhaps even challenge us on a daily basis. These works



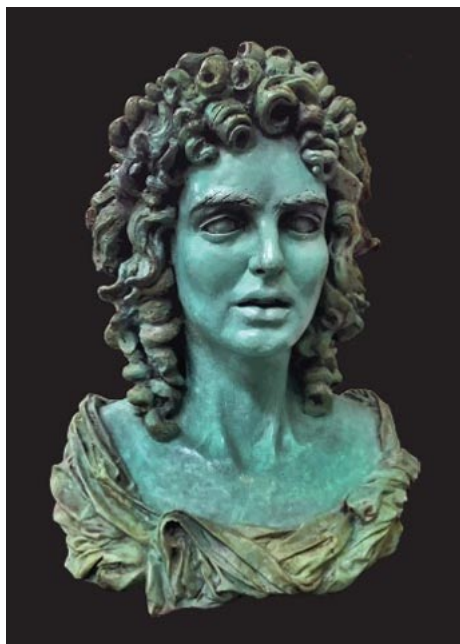
Diane Arbus, "Man and a Boy on a Bench in Central Park, NYC", 1962, gelatin silver print, 20 x 16 in. Weatherspoon Art Museum. Museum purchase by exchange, 2012. © Diane Arbus.

drawn from the museum's collection explore familial relationships, be they between mother and child or self-identified families, and less fixed, but equally important ties - to lovers, friends, and even objects. For further information call the Museum at 336/334-5770 or visit (<http://weatherspoon.uncg.edu/>).



"Orpheus", by Adrian Rhodes, part of an installation works at SECCA

The Southeastern Center for Contemporary Art in Winston-Salem, NC, is proud to announce the upcoming opening of *DRAWN: Concept & Craft*, an expansive exhibition featuring more than 200 works by a wide array of artists including LeRoy Neiman, Kara Walker, Fab 5 Freddy, Kiki Smith, Sarah Sze and Buckminster Fuller. *DRAWN* brings together the diverse works of over 60 artists from around the world in an exhibition that provides a rare, revealing look into the creative process and artists' unique relationship with the art of drawing. The exhibition was curated by project founder Tomas Vu and SECCA Curator Wendy Earle with the assistance of Brian Novatny. The exhibition will remain on view through Feb. 15, 2021, in SECCA's Main and Potter Galleries. *DRAWN* expands the very idea of drawing. What began with the beautiful simplicity of two-dimensional works has now evolved to include animation, video projection, sculpture, collage, and cut-paper. For further information visit (secca.org/drawn), and follow SECCA on social media @SECCAcontempart.



Audrey Flack (American, b. 1931), "Medea", 2007, Cast iron.

The Cameron Art Museum in Wilmington, NC, is presenting *She Persists*, on view through Mar. 2021, which coincides with the 100th anniversary of the

continued above on next column to the right

ratification of the 19th Amendment and explores the ways in which female artists in Cameron Art Museum's permanent collection persist in their own lives, in their communities, in their world, both personally and politically - through art. From Mary Cassatt, whose paintings and prints were featured in exhibitions supporting suffrage, to feminist Audrey Flack, whose work *Medea* is a conscious redeeming of that tragic figure, to Beverly Buchanan, who fiercely explored identity as an African American woman through sculpture, land art, photography, and painting, this exhibition of 100 works for the 100th anniversary of the 19th Amendment creates a powerful dialogue about what it means to be a woman. You can see a smaller version of this exhibition on CAM's website at (<https://www.cameronartmuseum.org/index.php?c=current>). For further information call the Museum at 910/395-5999 or visit (www.cameronartmuseum.org).

The Gibbes Museum of Art in Charleston, SC, is presenting *Charleston Collects: Devotion and Fantasy, Witchcraft and the World's End*, featuring works from a private Charleston collection of Northern Renaissance Art, on view in Galleries Two and Three, through June 27, 2021. This selection of paintings and prints from a major, private, Charleston collection of Northern Renaissance art introduces a world of intensely, and sometimes disturbingly, vivid imagery that speaks to uncertainties of the period and remains relevant today. This exhibition is a selection of art curated by



"The Judgment of Paris", 1508, By Lucas Cranach the Elder (ca. 1472-1553); Woodcut; Courtesy of a private collection.

Lawrence Goedde, Ph.D., professor of art history at the University of Virginia. The collection, which is comprised of objects created in the Low Countries and Germany between 1440 and 1590, showcases a world of contradictions and unease - whether the subject is a troubled Virgin Mary contemplating her young son, or a menacing group of malevolent figures inspired by Hieronymus Bosch, or Albrecht Dürer's famous scenes from *Revelations*. For further information visit (www.gibbesmuseum.org).

SC Institutional Galleries

Publisher's Note: Due to the Covid-19 Pandemic it is advised that you check with facilities you want to visit before you do so, to find out if they are open and what limitations they are working under. Don't just assume they are open or closed and don't forget about these people, there are many ways you can support them during these troubling times. Check out their websites.

Virtual Exhibitions



"Bliss" by Stacy Lund Levy, Best of Show Alex Powers Memorial Award

Now - SC Watermedia Society's "43rd Annual National Virtual Exhibition". Welcome to the "43rd Annual National Exhibition"! Due to COVID-19 and in the interest of the health and safety of SCWS members and lovers of art, this year's exhibition is completely online. This year's show was juried by renowned portrait artist Ted Nuttall. While the show certainly speaks for itself, you can also read statements (<https://scwatermedia.com/statements/>) from both SCWS President Russell Jewell and Mr. Nuttall about the show. View the exhibition at (<https://scwatermedia.com/43rd-annual-national-exhibition/>).

Allendale

Salkehatchie Arts Center, 939 N. Main St., Allendale. **Ongoing** - Featuring a retail store offering works by artists from the Salkehatchie region including Allendale, Bamberg, Barnwell, Colleton, and Hampton Counties. Hours: Tue.-Sat., 10am-5pm. Contact: 803/584-6084.

Aiken

Aiken Center for the Arts, 122 Laurens St., SW, Aiken. **Main Gallery, Through Jan. 22** - "Outside and Around Us". Plein air painting is about leaving the four walls of your studio behind and experiencing painting and drawing in the landscape. Today, plein air painting is a flourishing trend in our art world. Artists come together for "paint out" excursions and workshops devoted to the practice year-round and coast to coast. This exhibition will be featuring artwork from Plein Air artists Al Beyer, Bill Daniel, Sally Donovan and Andrew Murphy. Augusta, GA, artist Linda Hardy will also be exhibiting work. Landscapes and marsh scenes are two of her favorite subjects. Her aim is not to recreate an image using photo

realism but to capture the essence of what she sees. Hours: Tue.-Fri., 9:30am-5:30pm. Contact: 803/641-9094 or at (www.aikencenterforarts.org).

Anderson

Anderson Arts Center, located in the Arts Warehouse, 110 Federal Street, downtown Anderson. **Warehouse Galleries, Through Jan. 28** - "Textile Impact Exhibit," in partnership with the Anderson County Museum. Hours: Tue.-Fri., 9:30am-5:30pm. Contact: 864/222-2787 or at (www.andersonartscenter.org).

Bay3 Artisan Gallery, located in the Arts Warehouse, 110 Federal St., Anderson. **Ongoing** - Featuring works by Marion Carroll, Carol Cook, Joshua Davis, Lynn Felts, Jane Friedman, Cheryl Gibsch, Ann Heard, Ruth Hopkins, Diann Simms and Lori Solymosi. The work presented in the gallery features oils, acrylics, watercolors, photography, pastels, collage, assemblages, sculpture, mosaics, and stained glass and jewelry. There is a piece of original art for every home or office in a variety of price ranges. Co-sponsored by the Anderson Arts Center. Hours: Tue.-Fri., 10am-4pm, & Sat., 10am-1pm. Contact: 864/716-3838 or at (www.andersonartscenter.org).

Beaufort Area

Beaufort Art Association Gallery, 913 Bay Street, across the street from the Clock Tower, Beaufort. **Ongoing** - New works by more than 90 exhibiting members of the Beaufort Art Association Gallery - exhibits and featured artists change every six weeks. In addition to framed paintings in a variety of media, the gallery offers prints, photographs, unframed matted originals, jewelry, sculpture, ceramics and greeting cards. Hours: Tue.-Sun., 11am-3pm. Contact: 843/521-4444 or at (www.beaufortartassociation.com).

Bluffton

Society of Bluffton Artists Gallery/Learning Center, 8 Church Street, corner of Calhoun and Church Street, Bluffton. **Jan. 4 - 31** - "Reflections of the Lowcountry," featuring works by Marianne Stillwagon, her art reflects her love for two homes and two studios in New Hampshire and the Lowcountry. **Ongoing** - Featuring works in a variety of mediums by over 100 area artists, with all work moderately priced. Changing shows every six weeks. Hours: Mon.-Sat., 10am-5pm & Sun., 11:30am-3pm. Contact: 843/757-6586 or at (www.sobagallery.com).

Camden

Bassett Gallery, Arts Center of Kershaw County, 810 Lyttleton Street, Camden. **Ongoing** - The Arts Center of Kershaw County is a 501(c)3 nonprofit organization that brings en-

continued on Page 24