

# Who Doo Dolls in South Carolina

continued from Page 30

Collectors and dreamers can order a custom Who Doo or buy one already created. Every Who Doo is crafted in generations limited to 6-10 dolls. Generally, it takes two weeks for the artists to design and create a generation. Each doll is uniquely hand-stitched from hand-painted upcycled fabric and decorated with individually selected yarn, found objects, shells, and other trinkets. Find a Who Doo decked out with tinkling bells or shiny sequins to keep away bad dreams or negative thoughts.

To see the latest generation and buy a Who Doo, visit the shop page at ([www.whodoomarket.com](http://www.whodoomarket.com)) and the website at ([www.whodooart.com](http://www.whodooart.com)) or follow Who Doo Arts on Facebook and Pinterest. Who Doo's are on display and in shops and galleries across South Carolina, including The Art Cellar Gallery and The Beaded Frog in downtown Greenville, the South Carolina Artisans Center in Walterboro, SC, and Aiken Center for the Arts in Aiken, SC. Also, Sorrell and Ortiz will be hosting trunk shows during the holidays at Carolina Moon Distillery (Edgefield, SC), The Beaded Frog (Greenville, SC), Belton Center for the Arts (Belton SC), and Sorrell's studio, Little House Art Studios, in



A single Who Doo Doll

Taylor, SC.

For further info call 864/517-4023 or visit ([www.littlehouseartstudios.com](http://www.littlehouseartstudios.com)).

## Greenville Technical College in Greer, SC, Offers Works by Polly Gaillard

Greenville Technical College in Greer, SC, is presenting *Investigating Family: Photographs by Polly Gaillard*, on view in the Benson Campus Galleries, through Dec. 19, 2014.

Please join the Department of Visual and Performing Arts at the Greer campus of Greenville Technical College for an exhibition of new works by photographer Polly Gaillard. In her recent works Gaillard explores the parameters and complexities of family structure. Mediated through black and white, color, aluminum prints and lomography, her imagery relays her feelings and questions about the moment of connection and disconnection to family. Her interest primarily addresses time and memory, whether ordinary, painful, poignant, humorous, and/or compellingly real.

Currently living in Greenville, SC, Gaillard received her Master of Fine Arts from Vermont College of Fine Arts in 2010. She has exhibited her work nationally including a recent exhibition at the Florida Museum of Photographic Arts in Tampa, and *My Aim is True*, a fundraising exhibition in Santa Monica, CA, curated by Jamie Lee Curtis. Her recently completed book *Pressure Points* also includes



Work by Polly Gaillard

a forward by Curtis.

Gaillard has taught photography classes and workshops for more than ten years. She has been a Lecturer of Art in Photography at Anderson University since 2010. In Summer 2013, Gaillard taught for the University of Georgia in Cortona, Italy. In the summer of 2012 and 2014 she taught for the University of New Orleans in Prague, Czech Republic.

For further information check our SC Institutional Gallery listings, call Laraine Wells, Administrative Assistant at 864/848-2023, e-mail at ([laraine.wells@gvltec.edu](mailto:laraine.wells@gvltec.edu)) or visit ([www.gvltec.edu/vpa/](http://www.gvltec.edu/vpa/)).

## The Clemson University Center for Visual Arts in Greenville, SC, Offers Works by Mary Robinson, Miranda Pfeiffer, and Elizabeth Shanks

The Clemson University Center for Visual Arts in Greenville, SC, (CVA-G) is presenting the new exhibit, *Works of Paper*, featuring works by Mary Robinson, Miranda Pfeiffer, and Elizabeth Shanks on view through Dec. 20, 2014.

The exhibition title which is a play on words, from the time-honored term "works on paper," features two and three-dimensional artwork. The curated show brings three artists together with roots in SC and the Upstate focuses on the reflexive identity of paper in the art-making process, and pays homage to drawing and printmaking of various scales.

Miranda Pfeiffer, who is originally from NC and Upstate SC and now resides in Los Angeles, CA, is returning "home" to show her large-scale drawings, many of which examine the multiple forms that paper can assume.

Mary Robinson, a printmaker and professor at the University of South Carolina,

is displaying both drawings and prints that examine organic form and the multiple interactions that materials can have with paper.

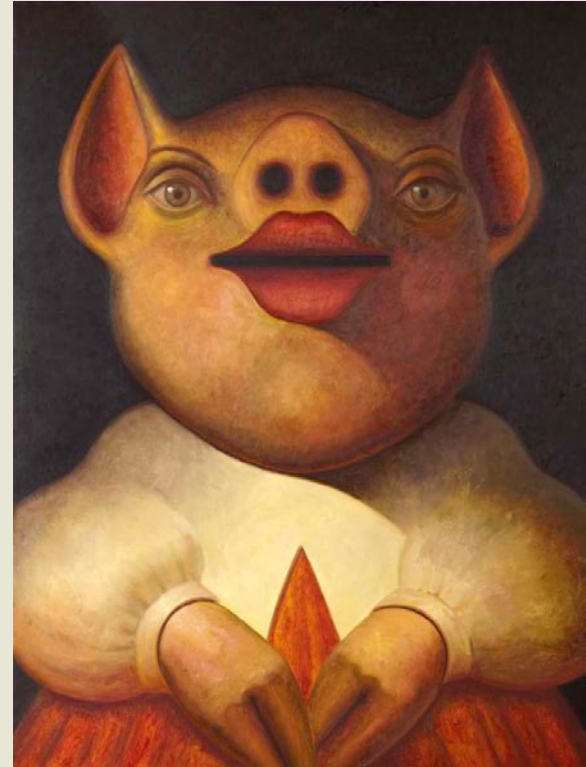
Elizabeth Shanks, a local artist based at ArtBomb on Pendleton Street, in Greenville, is showing her three-dimensional paper cut-outs. Shank's work lends a sculptural element to a material otherwise associated with two-dimensional media. Her work is integrated within the space to lend an element of formal diversity.

Throughout the duration of the exhibition, the artists will be hosting workshops both at the CVA-G and at the spaces of community partners in order to share their process with Clemson students, faculty, alumni, local artists, children within the community, and the general public. The dates and times of these workshops are to be announced at a later date.

The Center for Visual Arts-Greenville  
continued on Page 32

HAMPTON GALLERY LTD

RICE & ALLSBROOK  
TEACHER / STUDENT



Edward Rice, *Relic*, 2014 oil on canvas 64 x 48 inches

THROUGH DECEMBER 31, 2014

COFFEE AND CONVERSATION  
SATURDAY, DECEMBER 6, 11 - NOON

3110 Wade Hampton Blvd. Suite #10 • Taylors, SC 29687  
864-268-2771 • [sandy@hamptoniiiigallery.com](mailto:sandy@hamptoniiiigallery.com)

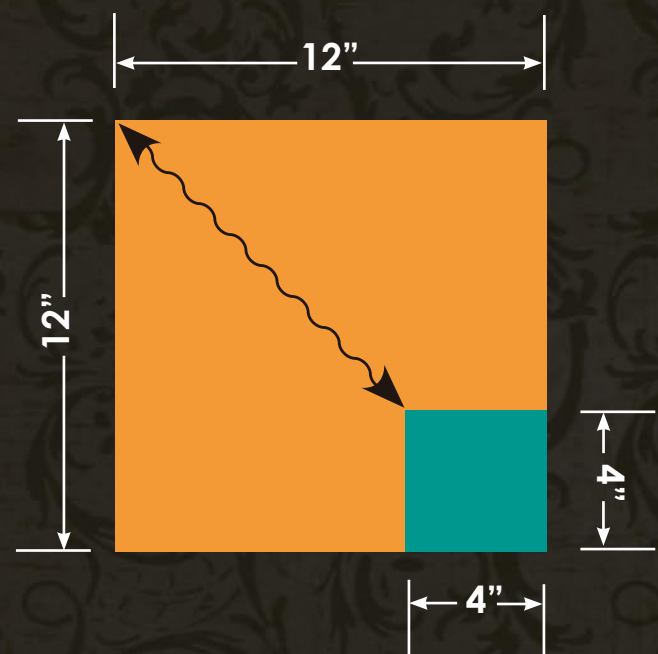
[www.hamptoniiiigallery.com](http://www.hamptoniiiigallery.com)

Hours: Tues. - Fri., 1 - 5 pm; Saturday, 10 am - 5 pm

opens NOVEMBER 18th, 2014

RECEPTION FOR THE ARTISTS : FRIDAY, DECEMBER 5, 6-8 PM

less is more:  
new works 12" & smaller



featuring works by our gallery artists  
& special guest artists



carolina gallery

523 W. Main Street | Spartanburg, S.C. | 864 - 585 - 3335

[www.carolinagalleryart.com](http://www.carolinagalleryart.com)