

# NC Institutional Galleries

continued from Page 49

to evaluate strengths, identify key acquisition areas, and also pinpoint where significant change is needed. Throughout the fall more virtual events will be available, learn more at [arts.wcu.edu/cultivatingcollections](https://www.wcu.edu/arts/wcu.edu/cultivatingcollections). Hours: Tue.-Fri., 10am-4pm & Sat., 1-4pm. Contact: 828/227-3591 or at (<https://www.wcu.edu/bardo-arts-center/fine-art-museum/>).

## Dillsboro

**Jackson County Green Energy Park**, 100 Green Energy Park Rd., Dillsboro. **Ongoing** - Featuring art created with renewable energy featuring blown glass, forge-hammered metals, ceramics. The Jackson County Green Energy Park (JCGEP) utilizes clean, renewable energy resources to encourage economic development, provide environmental protection, and offer educational opportunities that together will help lead towards a more sustainable future for Western North Carolina. Hours: Tue.-Thur., 1-4pm & Sat., 10am-4pm. Contact: 828/631-0271 or at ([www.jcgep.org](http://www.jcgep.org)).

## Durham

**Center for Documentary Studies at Duke University**, 1317 West Pettigrew Street, Durham. **Juanita Kreps Gallery, Through Dec. 17** - "POSTPONED: there are gardens at the margins," is a series of monumental portraits of queer Muslims living in the American South by Saba Taj, a visual artist based in Durham, North Carolina. The glittering artworks celebrate the abundance of subjects who embody liminality and the impossible. Hours: Mon.-Thur, 9am-7pm; Fri., 9am-5pm; Sat., 11am-4pm; & Sun., 1-5pm. Contact: 919/660-3663 or at (<http://documentarystudies.duke.edu/>).

**Claymakers**, Gallery of Fine Handmade Pottery, 451 S. Driver Street in Old East Durham, Durham. **Ongoing** - Shows an ongoing, but rotating, exhibit of Claymakers Community artists. Current exhibitors include Corinne Fox, Deborah Harris, Laura Korch, Barbara McKenzie, Teresa Pietsch, Elizabeth Paley, Gillian Parke, Savannah Scarborough, and Evelyn Ward. Hours: Tue.-Sat., 1-6pm & 3rd fri. of the month from 6-9pm. Contact: 919/530-8355 or at (<http://www.claymakers.org/>).

**Liberty Arts Gallery**, 918 Pearl Street in the Cleveland-Holloway neighborhood of East Durham. **Ongoing** - Liberty Arts is a nonprofit arts community whose collaborative practice reflects the dynamic personality of Durham. Our mission is to expand access to three-dimensional art and share the skills required to make it. All are welcome to take part through hands-on classes, public events, mentorships, and commissions. Liberty Arts believes in community outreach and encourages visionary thinking. Founded in 2001, Liberty Arts serves as an incubator in which artists work together to teach, learn, and inspire. All artists also take on public and private commissions, in addition to exhibiting and selling their work at the Liberty Arts Gallery. Hours: We are open to the public but would need to schedule an appointment to make sure someone is here to meet you. Contact: 919-260-2931, e-mail at ([info@libertyartsnc.org](mailto:info@libertyartsnc.org)) or at ([www.libertyartsnc.org](http://www.libertyartsnc.org)).

**North Carolina Central University Museum of Art**, 1801 Fayetteville Street, across from the Farrison-Newton Communications Building on the campus of NCCU, Durham. **Ongoing** - Permanent collection focuses on African American art of the 19th & 20th century, including works by Edward Mitchell Bannister, Henry Ossawa Tanner, Romare Bearden, Jacob Lawrence, Elizabeth Catlett, and Norman Lewis. As well as more contemporary works by Sam Gilliam, Richard Hunt, William Artis, and Kerry James Marshall. The museum's annual schedule of activities includes temporary exhibits of works from other museums, various retrospectives, and faculty and student art shows. Hours: Tue.-Fri., 9am-4:30pm & Sun., 1-4pm. Contact: 919/560-6211.

**Power Plant Gallery at ATC**, 318 Blackwell St Durham. **Ongoing** - The Power Plant Gallery is an off-site extension of the arts at Duke, promoting visual arts engagement with students, faculty and visitors from Durham and beyond. With 1,500 square feet of exhibition space, the gallery is equipped to exhibit a range of media, from photography and painting to video and installation. Featuring a rotating program of work by Duke students, faculty, and visiting scholars, as well as locally, nationally and internationally recognized artists, the gallery is a new and exciting addition to the growing, vibrant Durham art scene. Hours: Mon.-Fri., 10am-4pm & Sat., noon-5pm. Contact: call 919/660-3695 or e-mail at ([mfaeda@duke.edu](mailto:mfaeda@duke.edu)).

**Room 100 Gallery**, Golden Belt complex, Building 2, room 100, 807 East Main Street, Durham. **Ongoing** - The gallery is committed to promoting the work of emerging local, regional and national contemporary artists. Exhibitions of varying size and theme will be on view throughout the year with openings coinciding with Third Friday Durham. Hours: Mon.-Sat., 10am-7pm and Sun., noon-6pm. Contact: 919/967-7700 or at ([www.goldenbeltarts.com](http://www.goldenbeltarts.com)).



Mel Chin, "Cross for the Unforgiven", 2002. AK-47 assault rifles (cut and welded). Collection of the Nasher Museum of Art at Duke University. Museum purchase, Arthur Asian Art Endowment Fund and the J & M Johnson Acquisition Endowment Fund; 2019.22.1. © Mel Chin. Photo by Peter Paul Geoffrion.

**The Nasher Museum of Art**, Duke University Central Campus, 2001 Campus Drive, Durham. **Incubator Gallery, Through Jan. 9, 2022** - "Off the Map: The Provenance of a Painting". The objects that fill museums have often traveled long distances and passed through many hands to arrive at their current location. The physical movement of artworks through time and space becomes a part of their story, adding layers of meaning to the objects' existence. To study a work's history of ownership is to research its provenance. From the French word *provenir*, or "to come from," provenance relates to an object's origins and the path it has taken over tens, hundreds, and even thousands of years. Establishing provenance—past owners, locations, and types of transactions—addresses issues of attribution, histories of taste, cultural and monetary value, and notions of ownership itself. **Ongoing** - The Collection Galleries feature rotating installations of the Nasher Museum's extensive holdings of historical art. Eight galleries, as well as the entrance to Wilson Pavilion, are dedicated to the museum's strengths, which represent a brief history of human creativity from different times and parts of the world. Just beyond the entrance, visitors will find the Incubator, a flexible space for rotating student- and faculty-curated exhibitions. Visitors are invited to return again and again to The Collection Galleries, where Nasher curators continue to refresh the galleries with gems from the collection. The museum's contemporary collection is showcased through rotating exhibitions within a separate pavilion. Works from the contemporary collection create new conversations and connections among historical works in The Collection Galleries. A breakthrough work by New York artist Fred Wilson from 1990, Colonial Collection, anchors the Arts of Africa Gallery. A painting by Kehinde Wiley is on view in the European Art Gallery. **Ongoing** - Nasher Museum Café and Museum Shop. Admission: Yes, but free to Durham residents, courtesy of "The Herald-Sun" newspaper. Hours: Tue.-Sat., 10am-5pm; Thur. till 9pm; & Sun., noon-5pm. Contact: 919/684-5135 or at ([www.nasher.duke.edu](http://www.nasher.duke.edu)).

## Edenton

**Chowan Arts Council/Your Community Arts Center**, 504 S. Broad, Edenton. **Ongoing** - The Gallery features art from North East NC artists as well as some from within a 5 hour driving radius. You will find our beautiful waterfront location a pleasant destination as well as the fine art that hangs within our walls. Stained glass, pottery, photography, fiber arts, and painting in various media. We have metal art by Jonathan Bowling and Woodrow Slade, various forms of art by Christine Henninger, oils by Jane Perry, wood art by several local artist. You will find your visit to Edenton enjoyable and the Gallery a delight to your artist senses. Hours: Mon.-Fri., 11am-4pm & Sat.-Sun., 10am-2pm. Contact: 252/482-8005 or at ([www.chowanarts.com](http://www.chowanarts.com)).

## Elizabeth City

**Arts of the Albemarle**, a regional arts partner serving Pasquotank, Camden and Gates Counties of NC, The Center, 516 East Main Street, (corner of Main & Poindexter Streets),

Elizabeth City. **Ongoing** - The Jaquelin Jenkins Gallery and The 516 Gallery, are home to over 250 artists, craftsmen, photographers, potters, fiber artists and jewelers. The AofA at "The Center" hosts solo and shared exhibits once a month followed by opening receptions during Downtown Elizabeth City's First Friday ArtWalk each month, as well as workshops with some of our exhibiting and visiting artists. These workshops are open to members and non-members. Admission: Free. Hours: Mon.-Sat., 10am-5pm. Contact: Katie Murray, Executive Director ([kmurray@artsaoa.com](mailto:kmurray@artsaoa.com)) or Barbara Putnam, Gallery Manager ([bputnam@artsaoa.com](mailto:bputnam@artsaoa.com)). Both can be reached at 252/338-6455 or at ([www.artsaoa.com](http://www.artsaoa.com)).

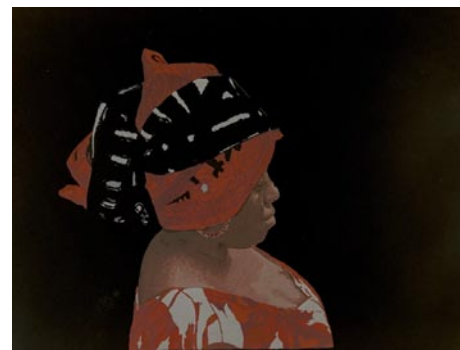
## Fayetteville

**Throughout Downtown Fayetteville, Through June 2022** - "ArtScape 5," is an annual public art initiative featuring an awe-inspiring collection of engaging and thought-provoking artwork and sculptures installed throughout the downtown Fayetteville area that beautifies the landscape of our community. Grab a copy of the ArtScape 5 map for locations to view each art piece and make it a family affair... take a family photo with your favorite art piece and tag it on social media using each personalized public art hashtag. By the end of November, the artist of the art piece that received the most votes will receive a \$1,000 People's Choice award and featured artist spotlight article. ArtScape 5 maps are available at The Arts Center, 301 Hay Street, or download at ([www.TheArtsCouncil.com/artscape-5](http://www.TheArtsCouncil.com/artscape-5)). ArtScape 5 is presented by the Arts Council of Fayetteville and the North Carolina Arts Council.

**Cape Fear Studios, Inc.**, 148-1 Maxwell Street, Fayetteville. **Ongoing** - New Gallery exhibit every 4th Friday of the month. We are a nonprofit cooperative of 30 local artist (always looking for new members) creating 2D & 3D art. Our Gallery displays exhibits of visiting artist's work as well as our own exhibits with individual studios where member artists create fantastic works of art onsite. The Gallery show is free of charge and the public is welcome to watch the artists at work. Group and individual classes in a variety of media are ongoing. Reg. Hours: Mon.-Fri., 11am-5pm & Sat., 10am-4pm. Contact: 910/433-2986, e-mail to ([capefearstudios@capefearstudios.com](mailto:capefearstudios@capefearstudios.com)) or at ([www.capefearstudios.com](http://www.capefearstudios.com)).

**David McCune International Art Gallery**, Methodist University, 5400 Ramsey Street, Fayetteville. **Through Dec. 1** - "Intersection," featuring the works of Andrea Keys Connell, Zhimin Guan, Soni Martin, and Winter Rusiloski. Hours: call about hours. Contact: 910/425-5379 or at ([www.DavidMcCuneGallery.org](http://www.DavidMcCuneGallery.org)).

**Ellington-White Contemporary Gallery**, 113 Gillespie Street, Fayetteville. **Ongoing** - A visual arts venue for emerging and professional artists with exhibitions of original art and events that reflect and respond to cultural arts diversity. Hours: Wed.-Sat., 11am-4pm. Contact: 910/483-1388 or at (<http://www.ellington-white.com>).



Work by Harris Wiltsher

**The Arts Center**, Arts Council of Fayetteville/Cumberland County, 301 Hay Street, Fayetteville. **Through Dec. 11** - "Third Annual Artists Who Teach 2021: National Arts Education Exhibition". Juror Dwight Smith, artist, MFA, Associate Professor of Visual Arts at Fayetteville State University, and Ellington-White founder selected the artworks from a CaFE national call for art. Special guest juror Jonathan Chestnut, MFA, Chair, and Department of Performing and Fine Arts at Fayetteville State University awarded prizes to the top eight artworks. Hours: Mon., 10am-2pm; Tue., 11am-2pm and Wed.-Thur., 10am-2pm. Contact: 910/323-1776 or at (<http://www.theartscenter.com/>).

**The Art Gallery @ FTCC**, 2817 Fort Bragg Road, FTCC, General Classroom Building (GCB) 221, Fayetteville Technical Community College, Fayetteville. **Ongoing** - The Art Gallery at FTCC displays exhibitions each semester that feature the artwork of students, faculty, and outside artists. Exhibitions are free and open to the public to enjoy. Hours: call for hours or connection to virtual exhibit. Contact: Dennis Johnson, Dept. Chair, by e-mail at ([johnsoden@faytechcc.edu](mailto:johnsoden@faytechcc.edu)) or call 910/678-0092.

**Union-Zukowski Lobby and Gallery**, in the Reeves Fine Arts Building, at Methodist University, Fayetteville. **Through May 7, 2022** - "Reciprocal Ekphrasis II". Hours: call about hours. Contact: Brenda Jernigan, Director of Southern Writers Symposium by calling 910/630-7454 or e-mail to ([bjernigan@methodist.edu](mailto:bjernigan@methodist.edu)).

## Fuquay-Varina

**Fuquay-Varina Arts Center**, 123 E. Vance Street, Fuquay-Varina. **Ongoing** - The Art Center contains a theater, art gallery, classrooms and dance studio. Gallery exhibits generally will change every six to seven weeks. Hours: Mon.-Fri., 9am-5pm & Sat., 10am-5pm. Contact: 919/567-3920 or at ([fvarts.org](http://fvarts.org)).

## Gastonia

**Arts on Main Art Center**, 212 W Main Avenue, at the intersection of Main and South, formerly the historic Citizens National Bank, Gastonia. **Ongoing** - Home of Gaston County Art Guild and we offer a fine arts gallery, gift shop, 18 working studio spaces and classroom areas. Hours: Tue.-Thur., 11:30am-5:30pm and Fri.-Sat., 11am-7pm. Contact: 704/865-4224 or at ([www.gastoncountyartguild.com](http://www.gastoncountyartguild.com)).

## Goldsboro

**Arts Council of Wayne County**, 2406 E. Ash Street, Goldsboro. **Ongoing** - The Art Market is located on the second floor of the Arts Council of Wayne County building. We represent approximately 50 NC based artists including potters, jewelry designers, wood turners, painters and writers. Hours: Mon.-Fri., 9am-7pm & Sat., 11am-2pm. Contact: 919/736-3300 or at ([www.artsinwayne.org](http://www.artsinwayne.org)).

## Greensboro Area

**Open Air Market**, corner of South Elm & MLK in downtown Greensboro. **First Fri. of every month, 4-9pm** - "Indie Market," a place where local artists and crafts people can come together to offer handmade and vintage goods.

**African American Atelier & Bennett College for Women Gallery**, Greensboro Cultural Center, 200 N. Davie Street, Greensboro. **Ongoing** - Featuring works by local, regional and national African American artists. Hours: Tue.-Sat., 10am-5pm; Wed., till 7pm & Sun., 2-5pm. Contact: 336/333-6885.

**Guilford College Art Gallery**, Hege Library, Guilford College, 5800 W. Friendly Ave., Greensboro. **Ongoing** - Other galleries located throughout Hege Library display rotating objects from the College's permanent collection. Hours: Mon.-Fri., 9am-5pm & Sun., 2-5pm, also closed during College holidays. Contact: call Theresa Hammond at 336/316-2438 or e-mail to ([thammond@guilford.edu](mailto:thammond@guilford.edu)).

**Guilford Native American Art Gallery**, Greensboro Cultural Center, 200 N. Davie St., Greensboro. **Ongoing** - Featuring works by Carolina's Native Americans. Hours: Tue.-Sat., 10am-5:30pm. Contact: 336/273-6605.

**NC A&T State University Galleries**, 1601 E. Market Street, Dudley Building, NC A&T State University, Greensboro. **Ongoing** - The Matye Reed African Heritage Collection seeks to educate people about the culture, history and accomplishments of African societies and peoples of African descent. It achieves this through the development of exhibits drawn from its extensive collection of African artifacts, which represent a cross-section of African cultures from over thirty-five countries. The collection is made up of fine examples of African material culture including sculptures, masks, figures, household implements, musical instruments, and textiles. The modern collection includes works from Nigeria, Ghana, Ethiopia, Haiti and elsewhere in the African Diaspora. Hours: Tue.-Fri., 10am-5pm & sat., 1-5pm. Contact: 336/334-3209.

**Revolution Mill**, 1250 Revolution Mill Drive, Greensboro. **Gallery 1250, Ongoing** - "Triple Visions: works by Jan Lukens, Michael Northuis and Roy Nydorf." Hours: Mon.-Fri., 11am-6pm, select evening + weekend hours. Contact: ([www.janlukens.com](http://www.janlukens.com)).

**The Center for Visual Artists Greensboro**, second floor of the Cultural Arts Center, 200 North Davie St., Greensboro. **Now** - View the online gallery at this link (<https://www.greensboroart.org/online-gallery-new>). **Ongoing** - Featuring works by member artists from throughout the greater Greensboro area. Hours: Tue.-Sat., 10am-5pm; Weds. till 7pm; & Sun., 2-5pm. Contact: 336/333-7485 or at ([www.greensboroart.org](http://www.greensboroart.org)).

**Weatherspoon Art Museum**, University of North Carolina - Greensboro, Cone Building, Tate and Spring Garden Streets, Greensboro. **The Leah**

continued on Page 51