

NC Institutional Galleries

continued from Page 54



Work by Kari Feuer

Burgwin-Wright House & Gardens, Visitor Center, 224 Market St. Wilmington. **Through Jan. 22, 2022** - "The Far Horizon," featuring works by Kari Feuer. "A landscape painter begins by placing the horizon, then letting the composition flow into the shy, land and water. I start this process with a long view into the far distance, using a palette of colors chosen for lush expression of the light and atmosphere," says Feuer. Hours: Mon.-Sat., 10am-4pm. Contact: 910/762-0507.

Winston-Salem



Work by Barbara Rizza Mellin

Artworks Gallery, 564 N. Trade Street, Winston-Salem. **Through Dec. 26** - "Wrapping Up 2021," featuring an all members show for the Holidays. A reception will be held on Dec. 3, from 7-9pm, during the Winston-Salem Gallery Hop. To wrap up another momentous year, Artworks Gallery members are pulling out all the stops with a grand collection of works, created by all members. Excitement for a new year ahead will be celebrated with a wide variety of original art, all very giftable! **Ongoing** - The gallery is the longest running cooperative gallery established by artists for artist members, showing 12 exhibits per year in the heart of Winston-Salem's Art District. Approx. 21 artists show their work in mediums such as painting, watercolor, drawing, photography, sculpture, encaustic wax, and digital art. The gallery features the work of Marion Adams, Wiley Akers, Woodie Anderson, Mary Beth Blackwell-Chapman, Owens Daniels, Chris Flory, Jim Gemma, Don Green, Alix Hitchcock, Karen Moran Kopf, Lea Lackey-Zachmann, Nanu LaRosee, Barbara Rizza Mellin, Seth Moskowitz, Wendell Myers, Katherine Mahler, Diane Nations, Betti Pettinati-Longinotti, Susan Smoot, Jessica Tefft, Kimberly Varnadoe, and Mona Wu, as well as Associate Members: Kate Magruder and Beverly Noyes. Hours: Wed.-Sat., 11am-5pm & Sun. 1-4pm or by appt. Contact: 336/723-5890 or at (www.artworks-gallery.org).

Associated Artists, The Milton Rhodes Center for the Arts, 251 North Spruce Street, Winston-Salem. **Ongoing** - AAWS is located in the Milton Rhodes Center for the Arts centered in the heart of downtown Winston-Salem and features a variety of exhibits each year. Our primary gallery is the Womble Carlyle Gallery which boasts approximately 1800 square feet of flexible exhibition space so our artists can exhibit anything they create; from small intimate paintings to large installation works we have the space to show it. All new members are Associate Members and may participate in Associate Member shows, All-Member shows, and our extensive Community Exhibits program that gets our artists work into businesses all around Winston-Salem. Hours: Mon.-Fri., 9am-9pm and Sat., 9am-4pm. Contact: 336/747-1463 or at (www.AssociatedArtists.org).

Charlotte & Philip Hanes Art Gallery, Scales Fine Arts Center, Wake Forest University, 1834 Wake Forest Road #113, Winston-Salem. **Main Gallery, Through Dec. 10** - "Means of Identification: New Acquisitions to the WFU Student Union Collection of Contemporary Art". During the spring semester of 2021, the Student Union Art Acquisitions Committee (SUAAC), consisting of an unprecedented thirteen WFU students, purchased nine artworks for the Collection. The academic year of 2020-2021 was, indeed, unprec-

edented as COVID-19 infiltrated daily life. The impact of this global pandemic is still on-going: it has claimed millions of lives and changed the ways in which each of us relates to and navigates the world. As the university responded to the challenges of safely reopening campus, the SUAAC members and faculty advisors pivoted to continue this one of a kind, nearly 60 year-old program of student's acquiring contemporary art for the WFU Art Collection. Restricted travel prevented the Committee from traveling to New York City to look at the work in person, so they instead paid virtual visits to dozens of galleries in New York City, Los Angeles, Chicago, Atlanta, Denver, and Detroit. While the trip was not possible, the main requirement for acquisitions remained the same since the founding of the program in 1962: to purchase art that reflects the times in which it was made. As the coronavirus was spreading and the world faced a debilitating economic crisis, a summer of racial reckoning, a U.S. Presidential Election, an insurrection on the nation's Capital building, and a political shift in the fight for climate change, artists were responding. Hours: Mon.-Fri., 10am-5pm and Sat. & Sun., 1-5pm, except university holidays. Contact: 336/758-5585 or at (<https://hanesgallery.wfu.edu/>).

Delta Arts Center, 2611 New Walkertown Rd., Winston-Salem. **Ongoing** - Delta Fine Arts, Inc. was established in 1972 as an independent, non-profit by the W-S graduate chapter of Delta Sigma Theta Sorority, a national organization of African American college women founded in 1913 whose principal purposes and aims are to engage in cultural, educational and public service activities. Since its beginning, Delta Fine Arts has provided unique cultural and educational programming through a year-round program of exhibitions, classes, workshops, lectures, films, performances, and special projects for youth, adults, and the elderly in the areas of visual arts, music, literature, history and folk arts. Hours: Tue.-Sat., 11am-3pm, closed every 3rd Sat. Contact: 336/722-2625 or at (<http://deltaartscenter.org/>).

4th Dimension Gallery, Commerce Plaza, 411 W. Fourth St., downstairs from Cat's Corner, Winston-Salem. **Ongoing** - Featuring works by art students from Winston-Salem's colleges and universities - the NC School of the Arts, Salem College, Wake Forest University and Winston-Salem State University. Hours: Fri., 5-8pm & Sat., 5-8pm. Contact: 336/249-0418.

Milton Rhoads Center for the Arts, 251 North Spruce Street, Winston-Salem. **Main Gallery, Through Dec. 31** - "There's No Place Like Home for the Holidays: A Holiday Exhibit and Art Sale". This exhibit and art sale will feature works by artists of Winston-Salem and Forsyth County and encourage patrons to shop and support local artists during the holiday season. Guests are sure to experience a mix of media including art on canvas, handmade jewelry and accessories, leather goods, woodworking crafts, fiber arts, and more. **Through Jan. 31, 2022** - "Phenomena and Earthwork," featuring paintings and sculptures by Robert King. Hours: Mon.-Sat., 9am-9pm. Contact: 336/725-8916 or at (www.rhodesartscenter.org).

Piedmont Craftsmen Gallery, 601 North Trade Street, Winston-Salem. **Ongoing** - Featuring fine art crafts by over 350 of the best artisans of the Southeast. Hours: Tue.-Fri., 10:30am-5pm & Sat., 11am-4pm. Contact: 336/725-1516 or at (www.piedmontcraftsmen.org).

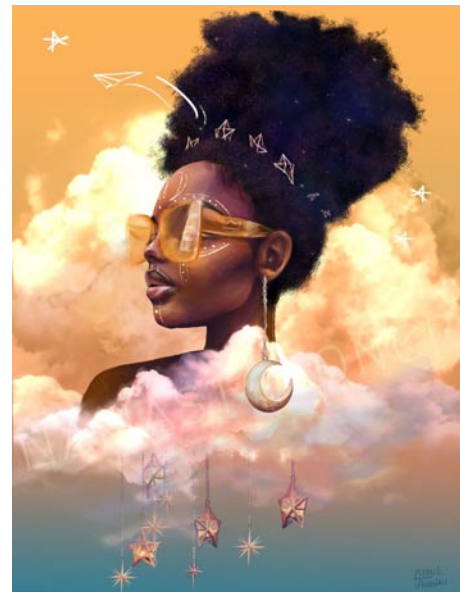
Red Dog Gallery/Art for Arts Sake (AFAS), 630 N. Liberty Street, Winston-Salem. **Ongoing** - We initiate and/or support a wide variety of special events and programs - all free to the public - that are designed to further the creation and enjoyment of art at the local level. In addition, through student scholarships and artist mentoring, we encourage the development of new and emerging artists throughout the community. Hours: Tue.-Fri., noon-6pm & Sat., 11am-4pm. Contact: 336/723-4444 or at (www.theafasgroup.com).

Reynolda House Museum of American Art, Reynolda Road, Winston-Salem. **Mary and Charlie Babcock Wing Gallery, Through Dec. 12** - "The Voyage of Life: Art, Allegory, and Community Response". Three centuries of American art come together with community-contributed stories to illuminate life's most defining moments in "The Voyage of Life". Explore how much of the human experience is held in common with works by artists including Lee Krasner, Robert Colescott, Keith Haring, Andy Warhol, Romare Bearden, Jacob Lawrence, Alice Neel, and Grant Wood. Select loans from Wake Forest University are on view along with works from Reynolda's collection of American art, mirroring Winston-Salem's remarkable collecting legacy. New acquisitions and promised gifts are also featured,

demonstrating the Museum's goal of increasing representation by artists of color. **Northeast and Northwest Bedrooms, Through Mar. 6** - "The O'Keeffe Circle: Artist as Gallerist and Collector". Quoting extensively from O'Keeffe's letters, this intimate exhibition will explore the artist in two other roles — as a gallerist with husband Arthur Steiglitz in New York, and as collector in her New York apartments and residences in New Mexico. The Museum's recent promised gift, O'Keeffe's Cedar Tree with Lavender Hills, 1937, will be joined by the artist's Pool in the Woods, Lake George, along with works by Isamu Noguchi, Alexander Calder, John Marin, Marsden Hartley, Alfred Stieglitz, Charles Demuth, Max Weber, Ansel Adams and Arthur Dove. The exhibition's "Artist as Collector" gallery explores the role of O'Keeffe as a gallerist along with Stieglitz, the gallerist and photographer whom she married in 1924. The experimental paintings and drawings of O'Keeffe found their greatest early advocate in Stieglitz. **Ongoing** - Collection of 18th through 20th century art, sculpture, American art, and pottery. Admission: Yes. Hours: Tue.-Sat., 9:30am-4:30pm & Sun., 1:30-4:30pm. Contact: 336/725-5325 or at (<https://reynolda.org/>).

Sawtooth School For Visual Arts, Milton Rhodes Center For The Arts, 251 N. Spruce St., Winston-Salem. **Dec. 3, 4-8pm & Dec. 4, 10am-4pm** - "Sawtooth Artists Market," featuring works by over 30 artists hand-picked by Sawtooth Program Directors. Don't miss your opportunity to purchase unique original objects from some of the regions best artists from diverse disciplines, such as woodworking, printmaking, glass, metals, and ceramics. Come check out work by: Mona Wu, Marisa Mahathey, Kim Gondring, Amy Badgett Beck, Nannette Davis, Jeff Wilson, Carol Patton, Woodie Anderson and More! Hours: Mon.-Fri., 10am-5pm & Sat., 10am-2pm. Contact: 336/723-7395 or e-mail at (www.sawtooth.org).

SEED Collective Gallery, 205 W. Sixth Street, entrance is on "Soho Alley", Winston-Salem. **Ongoing** - Featuring works by a cooperative group of artists in various mediums. Hours: Sat. from 11am-5pm & by appt. Contact: 336/722-2345.



Sloane Siobhan, "Ad Astra (Fly Girl)", 2021

Southeastern Center for Contemporary Art, 750 Marguerite Drive, Winston-Salem. **SECCA's grounds and Overlook Gallery, Through 2022** - "Inside/Outside: Charlie Brouwer". This Virginia-based artist brings evolving outdoor sculpture project to SECCA's scenic grounds over the course of 17 months. Planning "Inside/Outside: Charlie Brouwer" has been a collaboration between the artist and Wendy Earle, Curator of Contemporary Art. The exhibition will have a unique format and schedule, beginning in August and running until December 2022. Every 40 days for one year, the artist will install outdoor sculptures on SECCA's grounds, along with indoor works and installations in spaces throughout the museum. Beginning in August 2022, the artist

will begin removing works every 40 days until the exhibition closes in December. **Community Gallery, Through Jan. 2, 2022** - "Remembering Jim Moon", Is an exhibition celebrating the life and work of iconic North Carolina artist Jim Moon. In the years following his first solo exhibition in New York City in 1949, North Carolina artist Jim Moon worked mainly in oil painting and serigraph. Educated in the USA (Cooper Union, NYC), Italy (Accademia Pietro Vanucci, Perugia), and Mexico (Mexico City College), his paintings explore centuries old human hopes and follies with a mastery of color and composition and sly wit. His works are in many public and private collections including New York's Museum of Modern Art. **Main Gallery, Through Apr. 17, 2022** - "Black@ Intersection: Contemporary Black Voices in Art," a special group exhibition featuring more than twenty artists, organized by guest curator Duane Cyrus. In Jan. 2021, SECCA posted an open call for guest curator submissions, seeking new voices and new perspectives for an upcoming project. SECCA hoped to develop a collaborative exhibition that showcases work being produced in response to the current moment, primarily the onset of and quarantine surrounding COVID-19 and the protests and events surrounding the death of George Floyd and the wider Black Lives Matter movement. After evaluating numerous exceptional applications, SECCA selected Duane Cyrus for the guest curator position based on his proposal for Black@Intersection. The exhibition features Black and African Diasporic artists from North Carolina and beyond. The artists simultaneously exemplify and defy—yet continue to redefine the perceived norms around concepts of Blackness as we see it in our world. They resist the nullifying commodification of blackness into a type of monolith and do so by creating works that defy the world on their own terms. **Potter Gallery, Through Jan. 31, 2022** - "Babette Shaw: And the Flies Decide Nothing," a photographic exhibition by California-based social practice artist Babette Shaw. The exhibition acts as a narrative cultural portrait comprised of a series of eight still life photographs, or "reliquaries," that dialogue with an original poem. Shaw engages in cultural excavation. With focused intention to challenge social hierarchies regarding gender and race constructions, she gathers everyday gendered objects, organic and inorganic matter, and historical momento mori and vanitas tropes. **Ongoing** - Founded in 1956, the Southeastern Center for Contemporary Art offers a front-row seat to the art of our time. Through visual art exhibitions, education, music, film, dance and theater, SECCA starts conversations that engage diverse communities and perspectives. SECCA is an affiliate of the North Carolina Museum of Art and a division of the NC Department of Natural & Cultural Resources. SECCA receives operational funding from The Arts Council of Winston-Salem and Forsyth County. Additional funding is provided by the James G. Hanes Memorial Fund. Hours: Tue.-Sat., 10am-5pm, Thur. till 8pm; Sun., 1-5 pm, and closed Mon. & state holidays. Admission is free. Contact: 336/725-1904 or at (www.secca.org).

Unleashed Arts Center, 630 North Liberty Street, Winston-Salem. **Ongoing** - The Center is a special initiative by The AFAS Group to foster an appreciation of art and to encourage the development of emerging artists. The center provides a venue for art shows, seminars, artist demonstrations and includes working artists studios. Hours: Tue.-Fri., noon-6pm and Sat., 11am-4pm. Contact: 336/413-6667 or at (www.theafasgroup.com).

Yadkinville

Yadkin Cultural Arts Center, 226 E. Main Street, Yadkinville. **Welborn Gallery, Through Dec. 30** - "Pushing Boundaries with The Beecasos," an award-winning triad-based art quilt collective that takes their name from Picasso, a master of stylist exploration. Hours: Mon.-Fri., 9:30am-4:30pm. Contact: 336/679-2941 or at (<https://www.yadkinarts.org/>).

NC Commercial Galleries

Publisher's Note: Due to the COVID-19 Pandemic it is advised that you check with facilities you want to visit before you do so, to find out if they are open and what limitations they are working under. Don't just assume they are open or closed and don't forget about these people, there are many ways you can support them during these troubling times. Check out their websites.

Aberdeen

Artistic Impressions, 103 North Poplar Street, Aberdeen. **Ongoing** - Featuring custom stained glass, glass etching, repairs, restoration and church windows, plus a full supply for the hobby-

ist. Hours: Mon.-Fri., 9am-5pm & Sat., 10am-2pm. Contact: 910/944-1930.

Seagrove Pottery of the Sandhills, 1680 NC Highway 5, less than 2 miles from the Village of Pinehurst in the Food Lion/Bowling Alley Plaza, Aberdeen. **Ongoing** - Featuring only NC potters and primarily those of Seagrove, NC. We typically have over 1000 pieces from 25 pottery artist's on display. Hours: Mon.-Sat., 10am-5pm. Contact: 910/420-8056 or at (www.pinehurstpottery.com).

continued on Page 56