

Exhibits Still On View, continued

continued from Page 28

defy consumerism, along with the methods and myths it perpetuates about womanhood and femininity. The exhibition consists of 12 life-sized, freestanding sculptures made from everyday feminine materials arranged in a maze-like exhibition space. The layout of the exhibition creates alcoves, enabling individual observation and interaction with each sculpture. For further information call the Center at 864/735-3948 or visit (www.artcentergreenville.org).



(Left), Lizabeth Rossof, "5 XI'AN AMERICAN WARRIORS", 2019, nylon fabric, dimensions vary. (Right), Sharon Engelstein, "Seeker", 2012, nylon fabric, forced air, 14 x 9.4 x 18.6 feet.

NC State University in Raleigh, NC, is presenting *BLOW UP II: Inflatable Contemporary Art*, on view at the Gregg Museum of Art & Design, The Historic Chancellor's Residence, through Jan. 28, 2024. *BLOW UP II: Inflatable Contemporary Art* explores the medium of inflatable art with figurative, conceptual, and abstract imagery. These large-scale inflatable sculptures, conceived by nine artists and art collectives, connote fun and whimsy, are familiar yet strange, and challenge the definition of art. Here, in an unusual feat, artists use air as an active tool in their work to subvert our perspective and surprise us. Inflatables have a long history, dating as far back as the 18th century, and were initially perceived as innovative, if not magical, objects. Today, inflatables are often associated with happy memories. Lawn inflatables, bouncy houses, and party balloons are ubiquitous at holidays and celebrations. Water wings, inflatable inner tubes, and rafts conjure thrilling vacation memories. The awe-inspiring hot air balloon challenges our feet-on-the-ground perspective, allowing us to levitate and explore the land from above like a bird. For further information call the Museum at 919/513-7244 or visit (<https://gregg.arts.ncsu.edu/>).



Amalia Galдона Broche, "Glorieta," 2023. Courtesy of the artist and Patricia Sweetow Gallery.

The Southeastern Center for Contemporary Art (SECCA) in Winston-Salem, NC, is presenting *The Threads We Follow*, a group exhibition of fiber-based works by leading global artists, on view in the

Center's Main Gallery, through Mar. 10, 2024. Over several centuries, artists and craftspeople have used fiber to challenge identity-based oppression throughout various global cultures. Many of these artists specifically contemplate the historic devaluation of textiles based upon their association with domestic labor and craft making, where women and communities of color have long interpreted social politics. *The Threads We Follow* acknowledges the foundations of fiber arts rooted in explicit gender and cultural expression while demonstrating contemporary understandings of the malleability of identity. The artists throughout this show experiment with structure and form to translate their experiences to materials like thread, fabric, and even hair, creating nontraditional designs including busts, sculptures, and suspended pieces. Ultimately, each of these artists emphasizes the exploratory nature of fiber arts that has continuously allowed space for community-focused experimentation and reflection. For further information call 336/725-1904 or visit (www.secca.org).



Work by Kathleen Thum

Appalachian State University in Boone, NC, is presenting *Considering Carbon: Kathleen Thum*, on view in Gallery A and Petti/Peiser Galleries of the Turchin Center for the Visual Arts, through May 4, 2024. Artist's statement from Kathleen Thum: "The exhibition, *Considering Carbon*, consists of a series of drawings and cut-paper wall installations which explore the theme of fossil fuels, specifically oil and coal. In the exhibition, I use different visual and conceptual approaches to examine the physical, material qualities of coal and oil, as I aim to heighten an awareness of our disconnection and dependence on fossil fuels. Oil and coal are an integral part of our contemporary existence, yet remain mysterious, unknown substances, contained and controlled by the industry." "Large-scale wall installation artworks in the exhibition consider the infrastructure of the pipeline system through a visual language of abstraction to communicate the vastness of the petroleum infrastructure. In these large cut-paper pieces, I evoke the visceral, sensory quality of the petroleum landscape by using scale, texture, surface, color and the non-traditional presentation of drawings to engage the body of the viewer." For further information call the Center at 828/262-3017 or visit (www.turchincenter.org).

Anderson

Anderson Arts Center, located in the Arts Warehouse, 110 Federal Street, downtown Anderson. **Main Gallery, Through Jan. 25** - "Art in Layers," featuring works by members of the Upcountry Fiber Artists (Evelyn Beck, Lynne Harrill, Cynthia Steward, Sara Quattlebaum, Denny Webster, and Kathryn Weston). The exhibit Art in Layers showcases the talent and creativity of the Upcountry Fiber Artists, a group of six textile artists hailing from the Carolinas. While their work is united by the use of fabric, each artist brings a unique perspective and style to their creations. **Atrium Gallery, Through Jan. 25** - "Life in Prints," is a collaborative exhibit that examines the everyday life and travel experiences of Erin Spainhour and Tracy Weiss through the artistic mediums of photography and printmaking. Through their work, they invite viewers to step into their world and gain a glimpse of their lives, capturing moments that are both relatable and unique. Hours: Tue.-Fri., 9:30am-5:30pm. Contact: 864/222-2787 or at (www.andersonartscenter.org).

Bay3 Artisan Gallery, located in the Arts Warehouse, 110 Federal St., Anderson. **Ongoing** - Featuring works by Marion Carroll, Rebecca Lawson Carruth, Sherron Dorris-Ferguson, Cheryl Gibisch, Diana Gilham, Ann Heard, Deane King, Joy Moss, Wesa Neely, Kathy Ogden, John "Mac" Read, Leslie Wentzell, and Diann Simms. The work presented in the gallery features oils, acrylics, watercolors, photography, pastels, collage, assemblages, sculpture, mosaics, and stained glass and jewelry. There is a piece of original art for every home or office in a variety of price ranges. Co-sponsored by the Anderson Arts Center. Hours: Tue.-Fri., 10am-4pm & Sat., 10am-1pm. Contact: 864/716-3838 or at (www.andersonartscenter.org).

Vandiver Gallery of the Thrift Library, Anderson University, 316 Boulevard, Anderson. **Jan. 22 - Feb. 23** - "Aaron Lee Benson - Solo Exhibition". Hours: Regular Library hours. Contact: Ashley Rabanal, Gallery Director by e-mail at (arabanal@andersonuniversity.edu).

Beaufort Area

Beaufort Art Association Gallery, 913 Bay Street, across the street from the Clock Tower, Beaufort. **Ongoing** - New works by more than 90 exhibiting members of the Beaufort Art Association Gallery - exhibits and featured artists change every six weeks. In addition to framed paintings in a variety of media, the gallery offers prints, photographs, unframed matted originals, jewelry, sculpture, ceramics and greeting cards. Hours: Tue.-Sun., 11am-4pm. Contact: 843/521-4444 or at (www.beaufortartassociation.com).

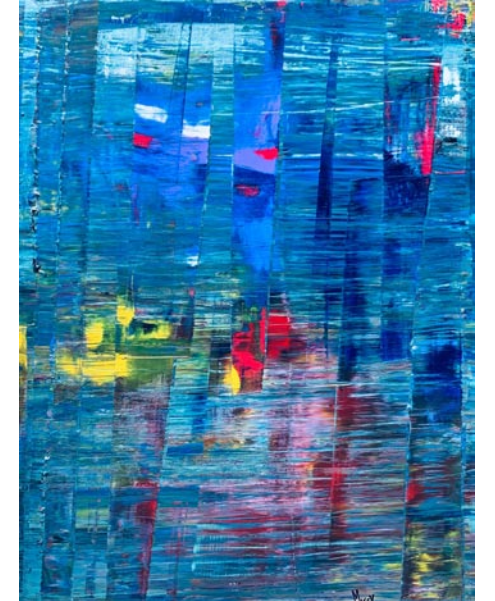


Works by Roxanne Lasky

Sea Islands Center Gallery, 1106 Carteret Street, Beaufort. **Jan. 19 - Mar. 10** - "Stitching Ghosts," featuring a contemporary textile work by Roxanne Lasky. The exhibit features the nature-inspired stitched maps of Roxanne Lasky. As a resident of the Low Country for nine years, she uses the spirit of this historical land to develop narrative pieces that honor materials and place. Her extended time spent in South Africa also informs her work. Roxanne gathers and repurposes her materials to carry forward the history of humble objects imbued with the energy of prior incarnations. **Ongoing** - Since 2012, the Sea Islands Center Gallery has hosted visiting

artists and group exhibitions from South Carolina, Georgia, and Arkansas. The gallery also features USCB students' work from juried exhibitions and the art department's senior capstone project. The mission of the gallery is to promote the academic and creative programming goals of the Department of Visual Art & Design and to serve as a catalyst of creative inquiry and exploration within the Beaufort community. Masks and social distancing required. Hours: Mon.-Thur., 8am-5pm & Fri., 8am-2:30pm. Contact: 843/521-3147 or at (<https://www.artgallery.uscb.edu/about>).

Bluffton



Work by Missy Gentile

Society of Bluffton Artists Gallery/Learning Center, 6 & 8 Church Street, corner of Calhoun and Church Street, Bluffton. **Jan. 2 - 28** - "Action Painting," features works by Missy Gentile. A reception will be held on Jan. 11, from 5-7pm. Gentile typically begins her abstract painting classes with a quote from the artist Helen Frankenthaler: "One of the first rules is no rules." She will apply this same philosophy with her upcoming featured artist exhibit in January at The Society of Bluffton Artists gallery in Old Town Bluffton. "Action Painting" will feature several pieces of her abstract works that convey strong emotional or expressive content, breaking away from traditional processes. Gentile draws inspiration from her life experiences and her core values of service and human connection. **Ongoing** - Featuring works in a variety of mediums by over 100 area artists, with all work moderately priced. Changing shows every six weeks. Hours: Mon.-Sat., 10am-5pm & Sun., 11:30am-3pm. Contact: 843/757-6586 or at (sobagallery.com).

Camden

Bassett Gallery, Arts Center of Kershaw County, 810 Lyttleton Street, Camden. **Ongoing** - The Arts Center of Kershaw County is a 501(c)3 nonprofit organization that brings energy, creativity, and experience of the Arts to all ages. The Arts Center strives to make both the Visual, Music and Performing Arts an integral part of the life of our community. Admission: Free. Hours: closed now due to COVID-19, but varies by exhibit. Contact: 803/425-7676 or at (www.fineartscenter.org).

Charleston

Avery Research Center for African History and Culture, at the College of Charleston, 125 Bull St., Charleston. **Ongoing** - Exhibits on view include: "Since 1920: Zeta Phi Beta Centennial". The Gamma Zeta chapter of Zeta Phi Beta Sorority Incorporated presents a centennial exhibit filled with the rich history of the sorority in print and paraphernalia. Visitors can see in-depth the programming, philanthropy and reach of Zeta Phi Beta during their 100 years. "The Water Keeps Rising" Hip-hop artist and activist Benny Starr has created an interactive exhibit based on data from the Avery's State of Racial Disparities Report in Charleston County. This exhibit will create an immersive experience for visitors. In the areas of civic engagement, racial disparities, the environment and performance art/music, this exhibit will aim to connect the dots from historical data and archival information up to the present conditions of the Lowcountry. "Resilient". Local artist Chris "Kolpeace" Johnson will highlight the power of being resilient with this work that recognizes African Americans who have shown strength through adversity including the late local activist Muhiyidin D'baha and Cyntoia Brown, who faced life in prison after being convicted of homicide as a juvenile. These pieces are tributes to memorialize the impactful strength of an unsung hero in the community, engaging the soul and spirit. "The African Origins of Mathematics". Charleston resident and artist Robert "King David" Ross highlights the direct impact Africa has had on modern mathematics in this exhibit. Showcasing the first math instrument, the Ishango bone, the exhibit allows visitors to see the influence Africa has had on every aspect of life. Admission: Free. Hours: Mon.-Fri., 10am-5pm, with guided tours

continued on Page 30

SC Institutional Galleries

Allendale

Salkehatchie Arts Center, 939 N. Main St., Allendale. **Ongoing** - Featuring a retail store offering works by artists from the Salkehatchie region including Allendale, Bamberg, Barnwell, Colleton, and Hampton Counties. Hours: Tue.-Sat., 10am-5pm. Contact: 803/584-6084.

Aiken

Aiken Center for the Arts, 122 Laurens St., SW, Aiken. **Main Gallery, Through Jan. 18** - Featuring works by Linda Hardy and Mary Ann Brock. **Aiken Artist Guild Gallery, Through Jan. 18** - Featuring works by Luiza Somodi and Jerri Phillips. Hours: Tue.-Fri., 9:30am-5:30pm. Contact: 803/641-9094 or at (www.aikencentreforthearts.org).