

Trackside Studios in Asheville, NC

continued from Page 23

tercolors of other artists. Finally, she ventured into the streets of Asheville, which led to another delightful discovery - outdoor cafes welcome painters to sit comfortably at their tables during slow times. Asheville's Bomba Restaurant at Pack Square was the host for her sketch *Jackson Building- Downtown Asheville*.

"This discovery came in handy in Quebec City", Pendergrass relates. "It was drizzly in the Basse Ville - not ordinarily a good painting day - but I noticed a covered open-air cafe with a view of the Notre Dame de Victoire church. The wait-staff, setting up for lunch, invited me to sit at one of the tables as long as I liked." The result was the urban sketch *Notre Dame de Victoire*.

Pendergrass experimented with a watercolor technique called "growing a wash" for the first time in Quebec City. "Growing a wash" is a continuous infusion of different colors into adjacent wet watercolor. She especially likes the feel

of this technique for romantic lighting or moody weather in sketches of skylines. *Frontenac Towers* was painted from the river-side promenade by the historic Frontenac Hotel in Quebec's Haute Ville. These landmark spires can be seen throughout Quebec City towering above other rooftops.

Back home in Brevard, Pendergrass is continuing her urban sketching, in Asheville and surrounding small towns. "Wherever I set up to paint," she says, "passers-by make encouraging comments like 'You go, girl,' or 'It's great to see an artist painting,' or 'I love your painting!' The last is my favorite, of course."

In March, sketches of Asheville and surrounding towns will be shown in the Asheville Gallery of Art, in downtown Asheville.

For further information check our NC Commercial Gallery listings, call the Studios at 828/545-2904 or visit (www.tracksidestudios375.com).

Asheville Art Museum in Asheville, NC, Features The Museum Itself

The Asheville Art Museum in Asheville, NC, is presenting *Vault Visible: Behind the Scenes at the Asheville Art Museum*, on view through late Spring 2016.

Visitors to the Asheville Art Museum will get a peek into the day-to-day activities of the Museum's curatorial department in the exhibition *Vault Visible: Behind the Scenes at the Asheville Art Museum*. The exhibition will appeal to all kinds of people — art collectors, museum studies students, and anyone curious about the inner workings of a Museum.

Vault Visible will give visitors the chance to observe Museum professionals at work in the galleries as they carry out an inventory of the Permanent Collection, photograph objects, assemble crates and perform conservation treatments, all in the public eye. Accompanying displays and programming will reveal the compelling stories behind the Museum's Collection of 20th- and 21st-century American art, while also helping visitors learn how to care for works of art, identify various me-

diums, and, in short, think like a curator.

As a special component to the exhibition, the Museum will be re-creating several of its storage spaces in the public galleries, bringing large numbers of ceramics, glass works and paintings from the Permanent Collection out into public view. With the help of the transparent wall in the gallery, visitors will be able to peer into "the vault" to see how works of art are stored—an experience usually reserved for the Museum's curatorial staff.

In conjunction with the exhibition, the Museum will be holding a series of programs. These programs will include workshops designed to teach practical skills in caring for works of art, as well as discussions centered on the challenges and delights of curating and collecting. Displays will change during the run of the exhibition to highlight the exciting discoveries made as the inventory unfolds.

For further information check our NC Institutional Gallery listings or visit (www.ashevilleart.org).

UNC Asheville in Asheville, NC, Features Works by Alison Ormsby

UNC Asheville in Asheville, NC, is presenting *Cultural Traditions: Sacred Groves of Sierra Leone and India*, an exhibit of photographs by Alison Ormsby of the UNC Asheville environmental studies faculty, on view in the Blowers Gallery, in UNC Asheville's Ramsey Library, through Feb. 26, 2016.

Ormsby's exhibit showcases photographs taken during her field research at sacred groves in India and Sierra Leone. Sacred groves are small, forested areas that are locally protected for their cultural and spiritual significance. These forests are conserved for numerous reasons, including traditional rituals and ceremonies, burial grounds, and ecosystem services such as watershed value. Cultural management of these groves helps promote conservation and preserve the area's biodiversity.

Ormsby, now an adjunct assistant professor of environmental studies at UNC Asheville, first became interested in sacred sites as a Peace Corps volunteer 20 years ago. She has authored book chapters



Work by Alison Ormsby

on sacred forests of Ghana in two books: *Sacred Natural Sites: Conserving Nature and Culture* (Routledge, 2010) and *Sacred Species and Sites: Advances in Biocultural Conservation* (Cambridge University Press, 2012) and has a forthcoming chapter on sacred World Heritage Sites in the book *Asian Sacred Natural Sites* (Routledge, 2016).

For further information check our NC Institutional Gallery listings, call the Library at 828/251-6436 or visit (www.library.unca.edu).

American Folk Art in Asheville, NC, Offers Annual Miniatures Show

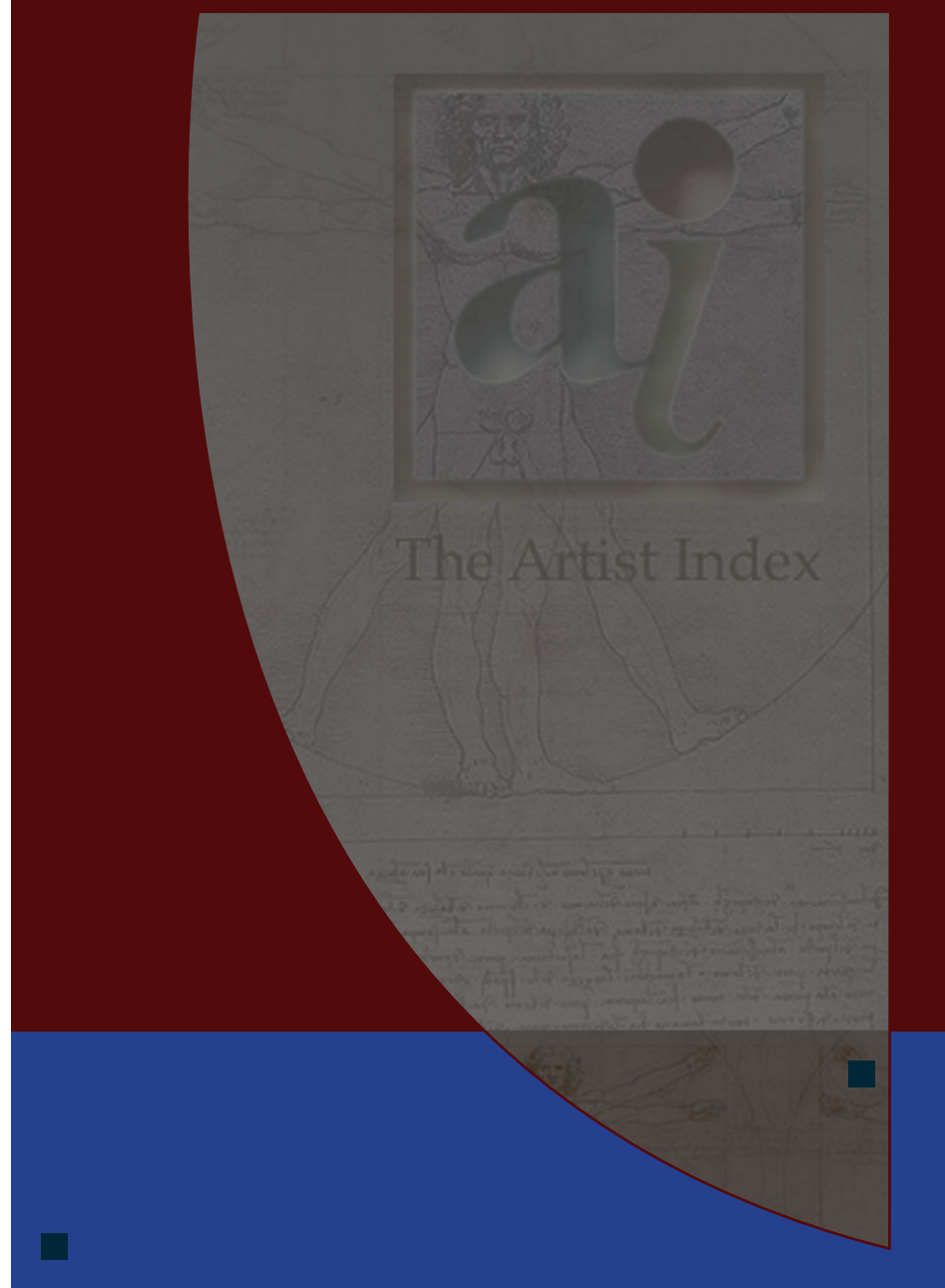
American Folk Art in Asheville, NC, will present the *12th Annual Miniature Show 2016*, on view from Feb. 11 - 25, 2016. A reception will be held on Feb. 12, from 5-7pm.

The highly anticipated 12th Annual Page 24 - Carolina Arts, February 2016

Miniatures Show at American Folk Art will feature 14 of the gallery's artists. When creating pieces for this show, these artists, known for vast stores of creativity rather than training, often experiment with new

continued above on next column to the right

www **theartistindex** .com



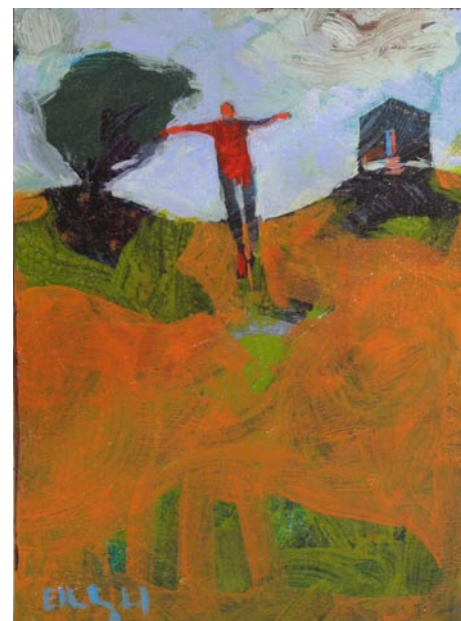
ideas. This experimentation can lead to breakthroughs that contribute to the artist's vocabulary going forward, or it can lead to a one of a kind example...these surprises make this show a particularly satisfying experience.

The size restrictions of 9" x 7" or less, require small caches of material, oft discovered and saved for use in this show.

Timed in the heart of winter and right before Valentine's Day, the Miniatures Show has evolved over the years into a welcome tradition; a celebration of love, a desire to gather together to appreciate the smallest and finest things in life.

For the first time, modernist painter Ellie Ali will be contributing to this event; her confidence as an artist is not diminished by size, rather intensified. Karl Mullen's miniatures are actually tiny yet powerful, and Asheville's own Spencer Herr's paintings will be properly provocative. The more traditional vernacular painters, Buddy Snipe, Cornbread, Lucy Hunnicutt and Liz Sullivan will delight with their heartfelt additions.

For further information check our NC



Work by Ellen Langford

Commercial Gallery listings, call the gallery at 828/281-2134 or visit (www.amerifolk.com).

Woolworth Walk in Asheville Features Works From Open Hearts Art Center

Woolworth Walk in Asheville, NC, will present an exhibit of works from the Open Hearts Art Center, on view in the FW Front Gallery, from Feb. 1 - 28, 2016. A reception will be held on Feb. 5, from 4-6pm.

The Open Hearts Art Center is a non-profit arts education program located in the rich arts based community of Western North Carolina. They are dedicated to serving people with a variety of challenges, which include but are not limited to developmental, mental, physical and emotional disabilities.

These unique individuals are able to

reach their full potential through creative techniques such as music, drama, dance, creative writing, ceramics and various visual art methods. They strive to develop and fulfill attainable goals with the artists, to build upon their artistic and social skills, to provide a safe and nurturing environment, and to encourage these individuals in realizing their important role in all communities.

For further information check our NC Commercial Gallery listings, call the gallery at 828/254-9234 or at (www.woolworthwalk.com).

The deadline each month to submit articles, photos and ads is the 24th of the month prior to the next issue. This will be Feb. 24th for the March 2016 issue and Mar. 24 for the April 2016 issue.