

# NC Institutional Galleries

continued from Page 43

Photography provides an opportunity to see what might otherwise be overlooked. Capitalizing on this concept, The exhibit presents a collection of images that reveal hidden scenes within mirrors, frames, windowpanes, and other constructions. In "Within the Frame", viewers "enter" some spaces through doorways, allowing for a deepening of the scope of a picture and the expansion of the story within an image. Windowpanes invite daydreaming, while reflective surfaces—especially mirrors—welcome contemplation of the self or questions of identity. Other works ask the viewer to consider the irony of a framed work of art within a photograph. Kristina Rogers's photocollages, for example, encourage conversations about the layers, inversions, and geometric lines in her images. Together the photographs in Within the Frame evoke ideas about photography that change the ways we think about the medium. **Feb. 16 - July 7** - "Saylor and Morris: Their World Is Not Our World". In Susannah Saylor and Edward Morris's video installation Their World Is Not Our World, a photographer and her smitten assistant document the Oostvaardersplassen, a fantastical manmade "wilderness" about 20 miles from Amsterdam. In connecting with the animals that make this nature reserve their home, the artists blur the boundaries between control and freedom, highlighting the human desire for connection even to those different from us. **Feb. 16 - Sept. 15** - "The Audubon Experience". This temporary presentation is adjacent to the newly installed Audubon Gallery, where visitors can view four large Audubon folios from "The Birds of America" and learn about the naturalist's life and artistic process. **African Art Gallery, East Building, Level A, Ongoing** - Featuring African creativity spanning 16 centuries. The new gallery will be three times as large as the old West Building gallery, allowing the Museum to display nearly twice as many works - including some that have not been on view in a decade, and others that are newly acquired and have never before been on display. The new gallery will feature improved light control so that light-sensitive works of art, such as textiles and works on paper, can be given more visibility, shown in curated rotations. The gallery will include a designated space to highlight North Carolina collections of African art from private collectors and public institutions, beginning with work from Bennett College. It will also incorporate African and African Diasporic modern and contemporary art, including a site-specific wall drawing by Nigerian-American artist Victor Ekpuk. **NCMA Park** - The North Carolina Museum of Art (NCMA) announces new works of art to be installed in the 164-acre NCMA Park. The works include a bronze tree by Italian artist Giuseppe Penone, a playful pair of benches designed by Hank Willis Thomas, and a 10-day installation of 23-foot-tall illuminated rabbits by Australian artist Amanda Parer. The sculptures will be featured at the NCMA's Park Celebration on Nov. 6, when the public is invited to experience the newly expanded Park with a variety of outdoor activities. **Ongoing** - Featuring 10 additional sculptures by the celebrated French artist Rodin on loan from Iris Cantor's private collection. **Ongoing** - "John James Audubon's The Birds of America". The state has owned this treasured volume since 1848, but it has never been exhibited. **Ongoing** - The North Carolina Museum of Art has an outstanding permanent collection of more than 5,000 objects spanning antiquity to the present day. On the occasion of the expansion, the Museum has acquired more than 100 new works of art. Representing commissions, gifts, and purchases, the new works encompass important and diverse examples of historic and contemporary art from around the world, and will be installed in the Museum's new building and the surrounding landscape. Highlights include a gift of 28 sculptures by Auguste Rodin, and work by such internationally acclaimed artists as Roxy Paine, Ursula von Rydingsvard, El Anatsui, Jaume Plensa, Jackie Ferrara, Ellsworth Kelly, and David Park, among others. Admission: Yes for some exhibits. Hours: Tue.-Sat., 9am-5pm; Sun., 10am-5pm; & open until 9pm on Fri. Contact: 919/839-6262 or at ([www.ncartmuseum.org](http://www.ncartmuseum.org)).

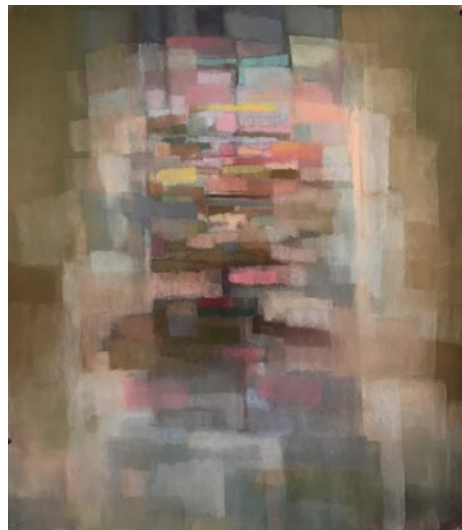
**North Carolina Museum of History**, 5 East Edenton Street, (between Salisbury and Wilmington Streets), Raleigh. **Through Feb. 24** - "A Thousand Words: Photographs by Vietnam Veterans". This collection of intriguing images, taken by North Carolina soldiers, explores the human elements and experiences of the Vietnam War; each snapshot is enhanced by commentary from veterans relaying what a photo means to them. **Through Mar. 3** - "The North Carolina Roots of Artist Ernie Barnes," featuring a new exhibit showcasing original paintings by and artifacts from the life Ernie Barnes, a native North Carolinian and NFL football player who became one of the nation's foremost African-American artists. Widely-known as the real painter behind the character J.J. Evans' artwork

in the groundbreaking African-American sitcom "Good Times", Barnes' unique style of painting made him one of the premier figurative artists of the late 20th and early 21st centuries. His style, which has been widely imitated, is best exemplified by his celebrated Sugar Shack dance scene that appeared on Marvin Gaye's "I Want You" album cover and in the closing credits of "Good Times". **Ongoing** - Featuring exhibits dealing with North Carolina's history as a theme. Admission: Free. Hours: Mon.-Sat., 9am-5pm & Sun., noon-5pm. Contact: 919/807-7900 or at (<http://www.ncmuseumofhistory.org/>).

**ALTERNATE ART SPACES** - Raleigh **Progress Energy Center for the Performing Arts**, 2 East South Street, Raleigh. **Ongoing** - The Betty Ray McCain Gallery is nestled within the Duke Energy Center for the Performing Arts, and is the proud home of the North Carolina Artists Exhibition, a collection of work by state artists, selected each year by respected local museum and gallery directors from hundreds of submissions. For info contact Susan Garrity by e-mail at ([artistsexhibition@gmail.com](mailto:artistsexhibition@gmail.com)). Hours: during performances or call. Contact: call 919/831-6060 for hours and directions.

## Rocky Mount

**Maria V. Howard Arts Center**, Imperial Centre for the Arts and Sciences, 270 Gay Street, Rocky Mount. **Through Apr. 21** - "Photography from the Charles Killebrew Collection". Killebrew was an Edgecombe county native who photographed the life and times of Rocky Mount and the surrounding areas for many decades spanning from the 1940s through the 1970s. The Killebrew Collection was donated to UNC's Wilson Library by Braswell Memorial Library with the understanding that the collection would return to Rocky Mount for temporary display. Don't miss this incredible representation of photography and local history. **Through Apr. 21** - "HANDCRAFTED Juried Art Show," juried by Wendy Earle. The exhibition includes artists from around the country and displays only hand crafted art pieces including: ceramics, quilting, jewelry, woodworking, sculpture, and more! This year's juror is Wendy Earle of the Southeastern Center for Contemporary Art (SECCA). **Through Apr. 21** - "Where the Dream Began: Dr. Martin Luther King, Jr. in Rocky Mount, North Carolina". Curated by Alicyn Wiedrich, this exhibit explores Dr. King and Dr. Booker T. Washington's influence on Rocky Mount through historical trends. Along side this exhibit are selections from the Permanent Collection. **Feb. 8 - Apr. 14** - "Teaching Artist Exhibition". This exhibit features teaching artists who currently teach a program or workshop at the Imperial Centre. We are so fortunate to have talented teaching artists at the Imperial Centre and this exhibit is their chance to show off their professional works. We encourage you to check out what classes they teach and sign up! **Through Sept. 30** - "Sculpture Salmagundi XXII". In this, our twenty-second year of Salmagundi, we're excited to welcome 10 new sculptures into our city! Sculptures will be located: at the Senior Center, Monk Square, the Train Station, City Lake, Sunset Park, and the Imperial Centre. Engage with the sculptures on Otocast! Use the free app to vote for People's Choice Award, listen to the artist's audio, and visit all 10 sculptures to win a prize! Hours: Tue.-Sat., 10am-5pm & Sun., 1-5pm. Contact: 252/972-1163 or at ([www.imperialcentre.org/arts](http://www.imperialcentre.org/arts)).



Work by Maureen O'Neill

**Mims Art Gallery**, Dunn Center for the Performing Arts, NC Wesleyan College Campus, 3400 N. Wesleyan Blvd., Rocky Mount. **Through Feb. 17** - "The Mid-Century Modern Exhibition," featuring original artworks from Edward Christiana, Guy Danella and Helen Lowe Kendall; artists who flourished professionally between the 1940 and 90s. **Feb. 21 - Mar. 31** - Featuring an exhibit of

pastel painting by Maureen O'Neill. A reception will be held on Feb. 21, from 5-7pm with a gallery talk at 6pm. Hours: Mon.-Fri., 9am-5pm & Sat., 9am-noon. Contact: call 252/985-5268 or at ([www.ncwc.edu/Arts/Mims/](http://www.ncwc.edu/Arts/Mims/)).

## Rutherfordton

**Rutherford County Visual Arts Center & Gallery**, 160 N. Main Street, at the intersection of W. Court St., Rutherfordton. **Ongoing** - Offering a changing exhibit of 2D and 3D art including oils, watercolor, scratchboard, calligraphy, fiber, wood, glass, pottery and fine craft by local artists/fine crafters. Hours: Tue.-Sat., 10am-3pm. Contact: 828/288-5009 or at (<http://www.rcvag.com/>).

## Salisbury/Spencer

**Waterworks Visual Arts Center**, 123 E. Liberty St., Salisbury. **Feb. 9 - May 18** - "Unity Through Art," an exhibition of Cultural Narrative, including: "One Mind, Many Dreams," oil painting and animation by Gliser Fuentes Mena, on view in the Norvell Gallery; "Latinx: El Grupo De Los 10, Where is Home?," featuring works by Leticia Alvarez, Ousa Corcoran, Francisco Gonzalez, Las Ofrendas, Rosemary Meza-DesPlas, Lizbeth Ortiz, Jeannifer Jean Sandoval, Natacha Villamia Sochat, Stef Bernal-Martinez, and Yholima Vargas-Aleem, on view in the Osborne and Woodson Galleries; "Heels and Steel," digital art with traditional drawing by Jamaul Smith, on view in the YPG Gallery; and "Colorful Memories," mixed-media paintings and sculpture by Nico Amortegui, on view in the Stanback Gallery Hall. A reception will be held on Feb. 15, from 6-8pm. The exhibition features a selection of works in a variety of media by artists who identify as Latinx or Hispanic. These artists were invited to present their cultural narrative using materials and style reflective of their own personal work. The selected artwork amplifies our culturally rich communities and how their contributions add value to our region of the globe. This exhibition is co-curated with Claudia Corletto and sponsored by Wells Fargo. Hours: Mon.-Fri., 10am-5pm; Thur. till 7pm & Sat., 11am-3pm. Contact: 704/636-1882 or at ([www.waterworks.org](http://www.waterworks.org)).

## Seagrove Area

**Carolina Bronze Sculpture Garden**, 6108 Maple Springs Road, Seagrove. **Ongoing** - The Carolina Bronze Sculpture Garden is a natural and landscaped area overlooking a beautiful 1.25 acre pond. A walking trail loops around the pond with benches and a picnic area along the trail. The Sculpture Garden collection consists of donated and loaned sculptures from emerging and established artists working in all 3D media suitable for the outdoors. There are currently 19 sculptures installed around the pond. The landscaped and natural areas have a focus on NC native plants and trees. As an extension of this park, a sculpture is installed in the downtown area of Seagrove. Hours: Mon.-Fri., 8:30am-4pm. Contact: 336/873-8291 or at ([www.cbssculpturegarden.com](http://www.cbssculpturegarden.com)).

**Seagrove Area Pottery Center (Not the NC Pottery Center)**, 122 E. Main St., Seagrove. **Ongoing** - The former museum organization was founded twenty-five years ago in Seagrove, and is dedicated to preserving and perpetuating the pottery tradition. We strive to impart to new generations the history of traditional pottery and an appreciation for its simple and elegant beauty. A display of area pottery is now offered in the old Seagrove grocery building. Hours: Mon.-Sat., 9:30am-3:30pm. Contact: 336/873-7887.

**North Carolina Pottery Center**, 233 East Avenue, Seagrove. **Main Gallery, Through Feb. 23** - "Cast, But Not Least". Less heralded in the popular imagination than wheel-throwing, slip-casting - the technique of pouring liquid clay, or slip, into molds - has increased in popularity in the last 40 years with studio potters as a method of producing both simple and complex forms. "Cast, But Not Least" explores the landscape of North Carolina slipcasting, past and present, to show that it is not secondary to turning; the technique presents complex challenges and requires a different way of thinking about and creating ceramics. Featured Artists: Stormie Burns, Herb Cohen, Amanda Crowe, Heather Mae Erickson, Bruce Gholson & Samantha Henneke, Lisa Gluckin, Chris Gryder, Bill Jones, Nick Moen, Tom Spleth, Mark Warren, and Erin Younge. The exhibit was curated by Emily Lassiter. **Back Gallery, Through Feb. 23** - "Historical Slip! Decoration in NC," curated by Hal & Eleanor Pugh. **Feb. 28 - June 15** - "Art of Clay National Juried Show @ The North Carolina Pottery Center". The exhibition features 50 pieces from 41 artists from 21 states — It's the North Carolina Pottery Center's first ever National Juried Show, and it's exciting! Our international juror, Douglas Fitch of Scotland, narrowed the field down from 230+ pieces and will be doing the final judging when he is here the beginning of March as one of the featured potters at the North Carolina Pot-

ter's Conference, hosted by the Randolph Art Guild in Asheboro, NC. **Ongoing** - Featuring permanent and changing exhibits on the history of North Carolina pottery, "The North Carolina Pottery Tradition" and "Seagrove Area Pottery". The Center also offers information on activities, maps and information about the potteries located in the Seagrove area and across the state. A display of representative works from more than 90 area potteries is also offered. Hours: Tue.-Sat., 10am-4pm. Contact 336/873-8430 or at ([www.ncpotterycenter.org](http://www.ncpotterycenter.org)).

**STARworks Center for Creative Enterprise**, 100 Russell Drive, just seven miles south of Seagrove in Star. **School House Gallery, Ongoing** - The gallery features hand crafted glass and ceramic items. The gallery will feature work from STARworks staff artists, interns and resident artists, as well as local ceramic artists and glass artists from across the Southeast. Gallery Hours: Mon.-Sat., 9am-5pm. Contact: ([www.starworksnc.org](http://www.starworksnc.org)).

## Siler City

**Throughout Siler City, Feb. 15, 6-9pm** - "Siler City Art Walk," featuring exhibits at many of the city's exhibit spaces, live entertainment, artist demonstrations, food, local wine or beer tastings, offered in town on the 3rd Fri. of the month. Hosted by the North Carolina Arts Incubator. Contact: 919/663-2072 or at ([www.ncartsincubator.org](http://www.ncartsincubator.org)).

**North Carolina Arts Incubator Gallery**, 223 N Chatham Ave., Siler City. **Ongoing** - Featuring the handcrafted work of over 30 Incubator and regional artists in a variety of mediums including painting, pottery, stained and fused glass, fabric art, cards, photography, wood, jewelry, metal, baskets and more. There is a broad range of items and prices. Hours: Mon.-Sat., 10am-5pm; & 3rd Fri., 10am-9pm. Contact: 919/663-2072 or at ([www.ncartsincubator.org](http://www.ncartsincubator.org)).

**PAF Gallery**, 223 N Chatham Ave., Siler City. **Ongoing** - A gallery featuring works by local and regional artists. Hours: 3rd Fri. 6-9pm. Contact: 919/663-2072 or at ([www.ncartsincubator.org](http://www.ncartsincubator.org)).

## Southport

**Franklin Square Gallery**, 130 E. West St., Southport. **Feb. 25 - Mar. 16** - "Associated Artists of Southport Annual Spring Art Show". **Ongoing** - Works by members of the Associated Artists of Southport. Hours: Mon.-Sat., 10am-5pm. Contact: 910/457-5450 or at ([www.franklinsquaregallery.com](http://www.franklinsquaregallery.com)).

## Sylva

**Gallery One**, Main Street, Sylva. **Ongoing** - Home of the Jackson County Visual Arts Association. The association has also offered workshops: including utilizing social media, book binding, drawing and art history. Exhibitions usually include paintings, photographs, sculptures and occasionally contemporary crafts. Hours: Mon.-Fri., 1pm-4pm and by appt. Contact: Tim Lewis 828/337-3468 or James Smythe 828/507-4248.

## Tryon

**Tryon Arts and Crafts School**, 373 Harmon Field Rd., in the old Tryon Middle School, Tryon. **Feb. 8 - Mar. 15** - "2019 Red-Carpet Artist of the Year Show". On Feb. 8, from 6-8:30pm will be the Red-Carpet Gala. **Gallery & Gift Shop, Ongoing** - Gift Shop features juried works by regional artisans to selected work produced by our instructors and students. Hours: Mon.-Fri., 9am-5pm & Sat. 9am -1pm. Contact: 828/859-8323 or at ([www.tryonartsandcrafts.org](http://www.tryonartsandcrafts.org)).

**Upstairs Artspace**, 49 South Trade Street, Tryon. **Feb. 2 - Mar. 15** - "Pirouette: Installations by Leah Mulligan Cabinum". Cabinum lives in the rural Upstate where she makes art and teaches it at Winthrop University and USC-Upstate. A self-described post-minimalist artist, Cabinum is well known for her immersive, sculptural installations. **Feb. 2 - Mar. 15** - "Look Before You Leap: Kara Bender and Kevin Isgett." A resident of Greenville, Kara Bender has an MFA from Western Carolina University and now teaches at Greenville Tech and USC. Kevin Isgett's colorful abstract paintings are inspired by a childhood spent "exploring field and wood." Through mixed media techniques of brushwork, drawing and collage, he creates a "poetry of remembrance." An artist's Walk & Talk will be held on Feb. 2, from 5-6pm, with a reception will follow from 6-7:30pm. Hours: Tue.-Sat., 11am-5pm. Contact: 828-859-2828 or at ([www.upstairsartspace.org](http://www.upstairsartspace.org)).

## Valdese

**Valdese Heritage Arts Center**, 146 Main Street West, Valdese. **Ongoing** - The center of

continued on Page 45