

SC Commercial Galleries

continued from Page 51

established and emerging artists. Hours: by appt. only. Contact: at (www.artspace506.com).

Brawner Art Gallery, 649 Main Street, Shops on Main, North Myrtle Beach. **Ongoing** - Fine art gallery featuring local world class artists. From oil painting, watercolor, sculpting and jewelry, we offer original items to fit any budget. Hours: Tue.-Sat., 11am-7pm & Sun., 2-7pm. Contact: 843/467-5231 or at (https://www.brawnerartgallery.com/).

Collectors Cafe & Gallery, 7726 North Kings Highway, Hwy. 17 and 78th Avenue, Myrtle Beach. **Ongoing** - 5,000 square foot gallery featuring local and regional artists. Hours: Regular cafe hours. Contact: 843/449-9370.

The William H. Miller Gallery, 714 Main Street, Myrtle Beach. **Ongoing** - Featuring works by William H. Miller. Hours: daily from 1-5pm. Contact: 843/410-9535.

Newberry

The Carpenter Gallery, 1220 Main Street, corner of Main and College Streets, Newberry. **Ongoing** - We are a fine art gallery in downtown Newberry, SC, representing international and regional artists. We offer original oil and watercolor paintings, pottery and handmade jewelry and textiles. Our goal is to support our wonderful artists' talents while offering a refreshing gallery experience in a charming small town. Hours: N/A. Contact: (https://carpenter-gallery.com/).

North Charleston

Steve Hazard Studio & Art Gallery, 4790 Trade Street, located in the business park across from the Festival Center, off Patriot Blvd. between Dorchester Road & Ashley Phosphate Road, Suite H, North Charleston. **Ongoing** - A new venue for on-going art shows of Contemporary Fine Craft and Fine Art available for purchase. A gallery and working studio featuring works by Steve Hazard including 2-D & 3-D wall art, welded metal furniture, sculpture, functional objects, and jewelry in fused glass and etched clear glass. Art commissions & unique design projects accepted. Find art beyond the ordinary, off the beaten path. Contemporary abstracts, nonrepresentational & figurative works created by local, national & international artists including sculpture, objects, original paintings & reproductions. Free admission and free parking. Hours: by appt only. Contact: 843/864 4638 or e-mail to (afgraffiti@aol.com).

Pawleys Island, Litchfield & Murrells Inlet

Art Works in the Litchfield Exchange, 14363 Ocean Highway, 2 miles south of Brookgreen Gardens, Pawleys Island. **Ongoing** - Featuring original fine, functional and folk art by a score of local artists in regularly changing displays. Paintings by Nancy Bracken, Bernie Slice, M. P. "Squeaky" Swenson and Jane Woodward, as well as works in mixed media by Terry Belanger, Kathi Bixler, Roger Cleveland, Gwen Coley, Millie Doud, Zenobia Harper, Barbara Linderman, Mary Helen Lowrimore and Cindy Valentine, and stained and fused glass by Sharon Knost, Suz Mole and Kathy Welde. Hours: Mon.-Sat., 10am-2pm. Contact: 843/235-9600 or at (www.ClassAtPawleys.com).

Gray Man Gallery, 10729 Ocean Highway, Pawleys Island. **Ongoing** - We are the oldest art gallery and custom framer's in the area and owned by local artist, Vida Miller. Hours: Tue.-Fri., 10am-5pm & Sat. 10am-2pm. Contact: 843/237-2578 or at (https://www.thegrayman-gallery.com/).

Island Art Gallery, a Fine Art Gallery, Villages Shops, 10744m Ocean Highway, Pawleys Island. **Ongoing** - Island Art Gallery is an artist-owned gallery with eight owner artists and twenty-seven exhibiting artists. We represent artists from North and South Carolina in a variety of mediums including oil, pastel, acrylic and watercolor. We offer ongoing studio art classes and workshops from established local and visiting artists. Hours: Mon.-Sat., 10am-5:30pm. Contact: call 843-314-0298 or at (www.pawleysislandart.com).

The Cheryl Newby Gallery, 11096 Ocean Hwy 17., in The Shops at Oak Lea, Pawleys Island. **Ongoing** - Representing Sigmund Abeles, Ellen Buselli, Ray Ellis, Joseph Cave, Laura Edwards, Claire K. Farrell, Kathy Metts, Mike Williams, and Charles Williams; also sculptors Gwen Marcus and Catherine Ferrell. A large inventory of original antique natural history prints and engravings by Mark Catesby, John J. Audubon, John Gould, and others. Also

original antique maps and charts from the 16th through the 19th centuries. Hours: Tue.-Sat., 10am-5:30pm. Contact: 843/979-0149 or (www.cherylnewbygallery.com).

Pendleton

Art Gallery on Pendleton Square, 150 Exchange Street, Pendleton. **Ongoing** - The gallery is operated by the Gallery of the Pendleton Square Artist Coop. Media include: paint in oils, acrylics and watercolor; mixed media; jewelry; pottery and ceramics; sculpture in modern materials; fabric art; photography. Second Friday receptions (6-8pm) present works of a featured (non-member) artist or selected (member) artist, with refreshments. Hours: Tue.-Sat., 10am-5:30pm & Sun., 10am-2pm. Contact: 864/221-0129 or at (http://www.artgalleryps.org).

Ridgeland

Watson Studio and Gallery, 516 South Green Street, Ridgeland. **Ongoing** - Works by George Watson in painting, blown glass, and pottery. Preview some of his work at (https://www.watsonstudio.com/). His work can also be seen at (https://www.pinterest.com/watsonstudio/_created/). This is an artist who has spent his life creating new and original work, striving to make each piece his best. This work is a must see for any collector of high-quality art. Hours: Open by appointment or by chance. Contact: E-mail to (glassartist70@hotmail.com), or call George at 781/217-1430.

Rock Hill

Art on the Corner @ Rinehart Realty, 154 E Main Street, Rock Hill. **Ongoing** - We are located in the downtown Rock Hill office of Rinehart Realty, on the corner of Main and Hampton St. right beside The Artist Collective. Our unique gallery has everything from colored pencil on Stonehenge paper, oil on fabric, to watercolors and so much more. Hours: Mon.-Fri., 9am-5pm. If the door is locked, just tap on the glass! Contact: 803/329-3219 or e-mail Gabriella Brewer at (artonthecorner@rinehartrealty.com). Visit Facebook at (https://www.facebook.com/ArtOnTheCornerRH/) or Instagram at (art.onthecorner).

Blue Rose Pottery, 1549 Cherry Road, just off I-77, Rock Hill. **Ongoing** - In 1994, after retiring from a corporate retail position, our owner decided to start Blue Rose Pottery - featuring Polish Pottery. A collector of dishes and pottery over the years - she believed the beauty, function and value of the stoneware made in Boleslawiec, Poland, was unsurpassed. Her goal, to share her love of Polish Pottery with customers all over the world and offer a broad assortment of items and color combinations to complement and décor, complete and cook's kitchen, and dress every table whatever the function. Hours: closed now due to COVID-19, call for info. Contact: 866/831-8066 or at (www.BlueRosePottery.com).

The Frame Shop and Gallery, 570 N. Anderson Rd., Rock Hill. **Ongoing** - Offering original fine art, limited edition prints and posters as well as custom framing services. Hours: Mon.-Sat., 10am-5pm. Contact: 803-328-8744.

The Hickory Post, 202 East Main Street, Rock Hill. **Ongoing** - Home to The Rock Hill Artist Collective. This 6,000sq.ft. building also houses 13 studio spaces to: Lindsay Conlan, Ashley Flynn, Kim Bryan, Harriet Marshall Goode, Ashley Barron, Sarah Simpson, Stefan Duncan, Kristen Gurri, Kat Hoover, Robin Stallings, Michael James, Louise Hane, and The Gypsy Debutant (a women's clothing boutique). Hours: Mon.-Sat., 10am-5pm. Contact: 803/417-6502 or e-mail to (info@thehickorypost.com).

Seneca

Loblolly Arts, 124 Ram Cat Alley, Seneca. **Ongoing** - A contemporary art gallery carrying fine art, high-quality handmade items located in the heart of downtown Seneca on historic Ram Cat Alley. Loblolly Arts houses a vibrant selection of art in an array of mediums. At Loblolly Arts we are committed to promoting art and will work with you offering personal service in finding the perfect piece for you. We welcome all art lovers from first time collectors and gift buyers to seasoned collectors. Our goal is to make an art lover out of everyone. Hours: Tue.-Sat., 10am-5pm. Contact: 864/882-7697 or at (www.loblollyarts.com).

Spartanburg

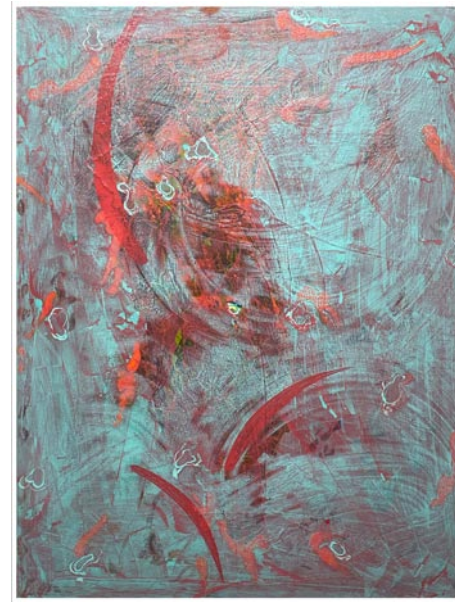
Throughout the Spartanburg area, Apr. 22-23, 10am to 5pm - "1st Spartanburg Open Doors Studio Tour," featuring the studios of 45 artists studios. The Artists Collective | Spartanburg, the Chapman Cultural Center, the

Spartanburg Art Museum and the Artists Guild of Spartanburg will host a first-of-its-kind for Spartanburg two-day Open Doors Studio Tour, to showcase 45 artists' working studio spaces and their works. The Open Doors Studio Tour is a self-guided two-day event that is free to the public. Visitors will be directed by a map on the Open Doors website at (opendoorstudios.art). A printed map also will be available in the Open Doors catalog. For more information visit (artist-collectivespartanburg.org).

Art & Frame Gallery, 880 East Main, Spartanburg. **Ongoing** - Featuring works by local artists, custom framing and art supplies. Hours: Mon.-Sat., 10am-5pm. Contact: 864/585-3700.

Creals Studio and Gallery, Suite 950, Montgomery Building, 187 N. Church St., Spartanburg. **Ongoing** - Featuring works by Jim Creal. Hours: by appt. only or chance. Contact: 864/597-0879 or e-mail at (jimcreal@mindspring.com).

H + K Gallery, 151 W. Main Street, Spartanburg. **Ongoing** - The gallery is committed to restoring, preserving and promoting the visual heritage of the region, we offer clients a broad spectrum of collectible fine art. The depth and quality of our inventory is supported by a carefully curatorial protocol. We ensure that every painting is original, has been appropriately restored and properly framed, and will present well. Hours: Tue.-Fri., 11am-4pm or by appt. Contact: 864/345-2262 or at (www.handkgallery.com).



Work by Jane Allen Nodine

Jane Allen Nodine Artists Showroom, inside Spruce Curated Interiors, 844 S. Pine Street in Spartanburg. **Ongoing** - Nodine will be showing paintings in the newly organized artist space at Spruce Curated Interiors. Located on the lower level, Spruce has developed a showroom style area where artists will display paintings, ceramics, prints and more. Works will be available for viewing during regular business hours, or by appointment with the artists. The new artist showroom will be participating in Spartanburg events such as ArtWalk, the new Spartanburg Open Studios, scheduled for Spring 2023, and Spruce sponsored artist events. Follow me on social media. @janenodineart - Instagram or @janenodineartist - Facebook, or sign up to get announcements for events.

The Art Lounge, 500 E. Main Street, Spartanburg. **Ongoing** - Local art and artists come "hang" at The Art Lounge. Monthly art events, painting workshops, and weekend "art markets" are just part of what The Art Lounge has to offer. Custom frame shop and gallery with the newest frame samples and designs. Custom mirrors, shadowboxes, canvas stretching and framing, and more. Hours: Mon.-Thur., 10am-5pm & Fri., 10am-4pm or by appt. Contact: 864/804-6566 or at (www.artlounge1.com).

Summerville

Art on the Square - Summerville, 420 Nexton Square Drive, Summerville. **Ongoing** - ART on the Square is a fine art gallery now opened at

the Nexton community in Summerville, SC. The gallery represents over 30 local award-winning artists offering painting, photography, sculpture, pottery, jewelry, stained glass and mosaics. Our location at Nexton Square is easily accessible with free parking and is located next to premier shopping and dining! Hours: daily 11am-8pm. Contact: 843/871-0297 or at (https://artonthesquare.gallery/).

Four Green Fields Gallery & Gifts, 117-A Central Ave., Summerville. **Ongoing** - Featuring the new home of Silver Pail Pottery by potters Jillian and Robin Carway. The gallery showcases the work of 45+ American fine craft artists with an emphasis on local and South Carolina artisans. Offering a wide range of talent from the master potter to the emerging silversmith. Other media represented include fiber, wood, photography, baskets, paper, glass, metal, leather and handmade artisan products. Craft artists interested in exhibiting with Four Green Fields can find an "Artist Info Packet" on the website. Hours: Mon.-Sat., 10am-5pm. Contact: 843/261-7680 or at (www.fourgreenfieldsgallery.com).

Imperial Framing & Specialities, 960 Bacons Bridge Road, Palmetto Plaza, Summerville. **Ongoing** - Featuring works by Lowcountry artists. Hours: Mon.-Fri., 10am-6pm & Sat., 10am-2pm. Contact: 843/871-9712.

Off The Wall Art Gallery and Framing, 102A South Cedar Street, Summerville. **Ongoing** - The gallery specializes in custom picture framing, shadowboxes, diploma frames, matting and frame repair. We also offer a large selection of oil paintings, wood frames, home decor, pottery and the work of local artisans too. Hours: Tue.-Fri., 10am-5pm & Sat., 10am-3pm. Contact: 843/376-5776. or at (http://www.offthewallartandframe.com).

People, Places, & Quilts, 129 W. Richardson Avenue, Summerville. **Ongoing** - Featuring fabric, books, patterns, notions, quilts and Folk Art. Hours: Mon.-Fri., 10am-5:30pm and Sat., 10am-5pm. Contact: 843/937-9333 or at (www.ppquilts.com).

Sumter

Elephant Ear Gallery Fine Arts and Creations, 672 Bultman Dr., Sumter. **Ongoing** - Featuring works by 23 artists offering every medium from watercolor to angora grown rabbits producing fur for spinning. Hours: Mon.-Sat., 10am-6pm. Contact: 803/773-2268.

Travelers Rest

White Rabbit Fine Art Gallery, 5 So. Main Street, Travelers Rest. **Ongoing** - Our ongoing exhibit is ever-changing and features the work of the founding members of the Gallery; all are local artists from the Upstate area. Hours: Tue.-Sun., 11am-5pm; Fri. & Sat., 11am-6pm and later on First Fri. Contact: Patty Cunningham at 610/659-4669; or Susan Savage at 864/903-3371; or at (http://www.artintr.com/white-rabbit-gallery.html).

Wild Hare Gallery & Studios, 212 N. Poinsett Hwy., Travelers Rest. **Ongoing** - Wild Hare Gallery is Travelers Rest's newest art gallery, owned by local artists Kym Easter and Joann Benzinger. The focus of the WH Gallery is on modern, local arts and fine crafts. Guest artists are exhibited for three to six months; this allows for new and interesting art at all times. Hours: Tue.-Fri., 11am-4pm or by appt. Contact: call 864/630-1423. 864/444-1152 or at (www.wildharegallery.com).

Walterboro

Artists' Hub of the Ace Basin, 255 East Washington Street, Walterboro. **Ongoing** - Featuring a co-op of local artists and crafters from the Ace Basin area. Hours: Mon.-Sat., 10am-9pm. Contact: 843/635-2682.

NC Institutional Galleries

Aberdeen

The Exchange Street Gallery of Fine Art, 129 Exchange Street, in the old Aberdeen Rockfish Railroad storage terminal, Aberdeen. **Ongoing** - The Artist's League of the Sandhills currently houses 35 artists-in-residence studios and offers classes by local professional artists and workshops by nationally known artists. Hours: Mon.-Sat., noon-3pm. Contact: 910/944-3979, or at (www.artistleague.org).

Alamance County

BAL Gallery, Holly Hill Mall and Business Center, 309 Huffman Mill Rd., Exit 141 off of I85/I40, Burlington. **Ongoing** - Since the beginning of Burlington Artists League in 1972, we have grown to represent many local artists in our immediate area. BAL's express purpose is to promote and elevate the area artists and their fine art spirit in Burlington, NC, and surrounding areas, thereby creating outlets for the artists and encouraging their continuing efforts to

continued on Page 53