

PAUL SIMON

EXCLUSIVE REPRESENTATION BY:

PROVIDENCE GALLERY



Anthology 2001-2011

Proceeds Benefit
Community Arts

Opening Reception: April 1
6:00 to 9:00 p.m.

April 1 through April 30

WWW.PROVIDENCEGALLERY.NET 601-A Providence Road
(704) 333-4535 Charlotte, NC 28207



Daffodils Discussing the World Situation
36" x 36" acrylic on canvas

ANNETTE RAGONE HALL

AnnetteHall.com • 704-798-9400 • annette@annettehall.com

Annette's studio is located at Rail Walk Studios & Gallery
in the Rail Walk Arts District in Salisbury, NC.

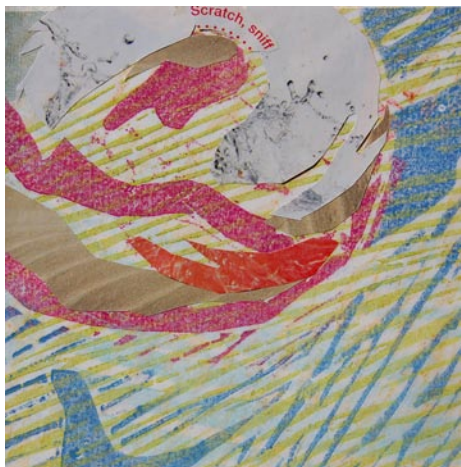
RWS&G is open on Saturdays from 11 a.m. - 5 p.m.

You may also contact Annette to make
an appointment to see her work.

Adam Ramsey Miller Gallery

continued from Page 17

of night paintings, including several of the Concord nightscape, while Janet Lasher will exhibit photographs utilizing alternative process techniques.



Work by Julie Benda

Ashley Lathe's current works explore the process of image making through a series of automated paintings dictated by

materials and external conditions. Bev Nagy uses traditional weaving techniques in a unique format, with alternative materials, to create the unexpected. She will also exhibit some of her streetscape tiles created from impressions of streets in Concord.

Jon Tarleton will combine various shapes and marks with his usual stripes, to add a sense of interplay to his work and create a dialogue, however subtle, within the pieces produced.

Charlotte ARTery exists to provide a community to unite regional artists and will nurture extensions of this network to include academia, museums, cultural organizations, commercial galleries, and art groups in the Charlotte region and beyond to promote interest and activity in the visual arts.

For further information check our NC Commercial Gallery listings, call the gallery at 704/788-2326 or visit (<http://www.theartmgallery.com>).

frontal assaults, Carl Plansky's paintings of flower bouquets threaten to leap from the canvas and strangle the viewer. To see his paintings is to be immersed in a colorful garden, as well as a pit of writhing snakes. For Mr. Plansky, who wrestles every form into being, a rose is a leaping flame or a serpent on Medusa's head - but, a realist at heart, his rose is, ultimately, still a rose." Taken from the *Wall Street Journal*, Apr. 11, 2009

Works on paper as well as oils on canvas from the artist's collection will be on display. "Carl's work is inspiring and
continued above on next column to the right



Work by Carl Plansky

unique" says Larry Elder. "This is our first show since his death to exclusively feature his trademark flower bouquets and landscapes. We felt it appropriate to choose the Spring season for our exhibition since these paintings reflect Carl's optimism and his belief in the renewal of nature as well as the human spirit."

Brice Brown, artist, writer and art critic said of Plansky's work "For Plansky, the triumvirate of the traditional motifs of still life, landscape, and human figure has been a lucrative source of inspiration. When he uncomfortably overextends a rose's stem - stretching it out to its maximum reach and then flash-freezing it in space so it hovers, jittering like an agitated cartoon - Plansky is not simply taking compositional license. He is exposing the animated life of things. Each petal, leaf, stem and vase has its own distinct personality and identity, hinting at the interconnectivity of all living (and non-living) objects."

For further info check our NC Commercial Gallery listings, call 704/370-6337 or visit (www.elderart.com).

Elder Gallery in Charlotte, NC, Features Works by Carl Plansky

Elder Gallery in Charlotte, NC, will present the exhibit, *Carl Plansky, Spring Arrival*, featuring the textural and vibrantly colored paintings by the late Abstract Expressionist, Carl Plansky, on view from Apr. 1 - 30, 2011. A reception will be held on Apr. 1, from 6-8pm.

Plansky was able to add beauty and excitement to mundane subject matter as his show at Elder Gallery clearly demonstrates.

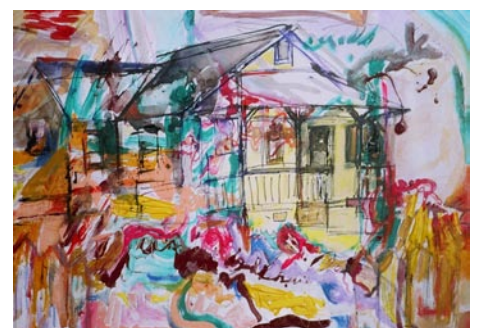
New York art critic and writer, Lance Esplund, wrote a number of reviews of Plansky's flower bouquet paintings and composed the following: "Expressive full-
Page 18 - Carolina Arts, April 2011

Mooreville Artist Guild in Mooreville, NC, Offers New Exhibits

The Mooreville Artist Guild in Mooreville, NC, will present several new exhibits including: an exhibit of works by Marcia Pinyan in Gallery 1; an exhibit of works by Carleen Davis in Gallery 2; an exhibit of works from the Paint Out to be held in Mooreville; and artwork by MAG volunteers is featured in the warehouse. All exhibits are on view at the Depot Fine Arts Center from Apr. 1 - 28, 2011. A reception will be held on Apr. 8, from 6-8pm.

Marcia Pinyan has always had an inner passion for art. She is a mostly self-taught artist working in several mediums including photography. She has exhibited in numerous shows and earned awards with her artwork.

Carleen Davis has a Painting and Art Education Degree and a Masters in Fine



Work by Carleen Davis

Arts History. Among her favorite artists is Romare Bearden from Mecklenburg County, NC, whose montage art has made a lasting impression on her own work. Now retired from teaching, Davis spends her time creating art in mixed media and
continued on Page 19