

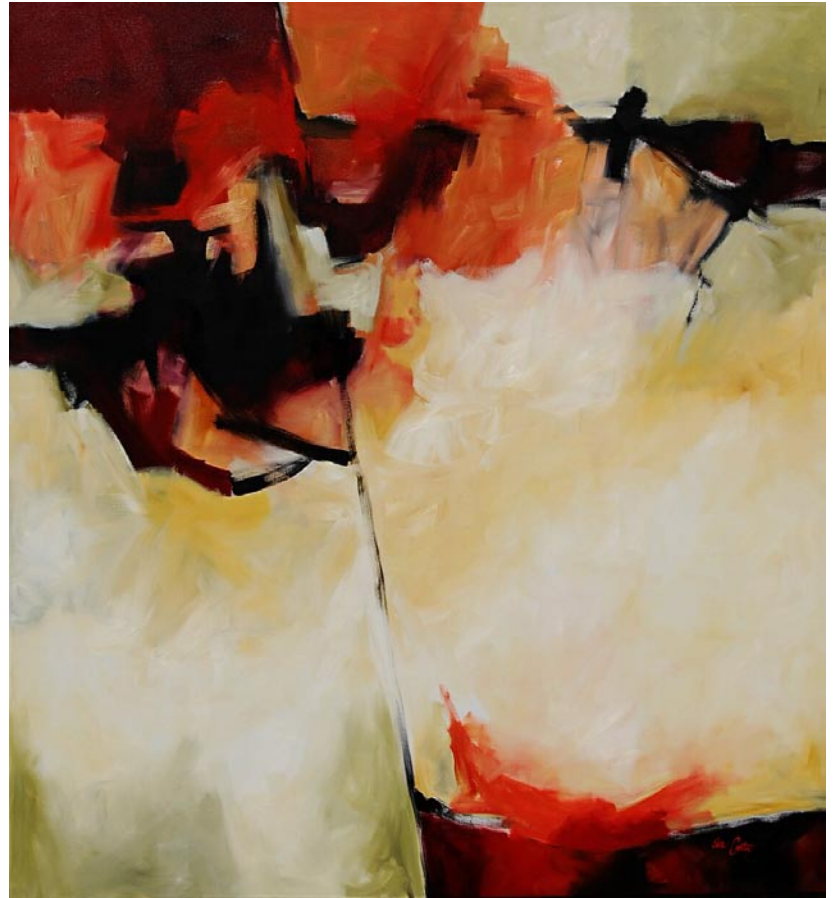


BETTY ANGLIN SMITH

Air, Land and Sea: April 4-18
opening reception April 4th 5-8



NINE QUEEN STREET
CHARLESTON, SC 843.853.0708
INFO@ANGLINSMITH.COM
WWW.ANGLINSMITH.COM



Fracture
Oil on Canvas, 72 x 66 inches

Eva Carter

Studio
6696 Bears Bluff Road
Wadmalaw Island, SC 29487

By Appointment Only
Please call (843) 478-2522
www.EvaCarterGallery.com

Nina Liu & Friends, Charleston, SC

continued from Page 9

For more than thirty-five years Johnson has been photographing the world around him. He has exhibited his work at galleries and museums across the country. Among the institutions that have collected his photographs are the Smithsonian Institution's National Museum of the American Indian in Washington, DC; the Illinois State Museum in Springfield, IL; the Art Institute of Chicago; and the Gibbes Museum of Art in Charleston. Johnson also has exhibited his work internationally, and his photographs also are in the collections of Sprint, McDonald's, Bank of America, MasterCard, the

Hyatt Corporation, and many other corporations.

An article in the *Los Angeles Times* referred to Johnson as "one of the country's premier landscape photographers." Critics have said that his photographs "speak with an eloquence of vision and craft from bygone days," and a review in the *Chicago Sun-Times* referred to "...a loamy strength, a solemn weight inside his pictures."

For further information check our SC Commercial Gallery listings or call the gallery at 843/722-2724.

and her triplets, painters Jennifer Smith Rogers and Shannon Smith Hughes, and photographer Tripp Smith. Sculptures in bronze by Darrell Davis and works in oil by Kim English and Colin Page are also available. The gallery also represents paintings and drawings from the estate of Carl Plansky. Subject matter ranges from

local and European landscapes to architectural works and still life, figurative and abstract.

For further information check our SC Commercial Gallery listings, call the gallery at 843/853-0708 or visit (www.anglinsmith.com).

Anglin Smith Fine Art in Charleston, SC, Offers Works by Betty Anglin Smith

Anglin Smith Fine Art in Charleston, SC, will present a selection of new paintings by Betty Anglin Smith in an exhibition entitled, *Air, Land & Sea*, on view from Apr. 4 - 18, 2014. A reception will be held on Apr. 4, from 5-8pm.

Forever inspired by the beauty of the Lowcountry she calls home, Smith has found her muse in nature. "*Air, Land and Sea* are the basic elements that provide the environment that sustains our life on Earth," says Smith. "Without any one of these elements, life would not exist as we know it."

For Smith, painting plays an important role in preservation. "As citizens of this Earth, it is our sacred duty to protect and preserve this environment both for us and for our future generations," she says. "My commitment as a landscape artist is to put color to canvas to express and interpret the beauty and value of our air, land and sea. Not only are these elements our lifeblood, they are the substance of nature that inspires and awes us in all their unique power and beauty."

Betty Anglin Smith is a native of
Page 10 - Carolina Arts, April 2014



Work by Betty Anglin Smith

the Carolinas and has firmly established herself as an enduring artist in the region. After the birth of her triplets, all now successful artists themselves, Smith pursued her training as an artist and has now been painting for over 40 years. Her paintings adorn the walls of private collections in the area, around the country, and abroad. Her recognizable and vibrant style has made her a favorite among collectors.

Anglin Smith Fine Art is Charleston's gallery for contemporary realism and color. The gallery features works by Lowcountry painter Betty Anglin Smith

continued above on next column to the right

Helena Fox Fine Art in Charleston, SC, Features Works by Mary Erickson

Helena Fox Fine Art in Charleston, SC, will present *Mary Erickson and Her Feathered Friends: New Works*, on view from Apr. 4 - 26, 2014. A reception will be held on Apr. 4, from 5-8pm.

Erickson's first solo exhibit at Helena Fox Fine Art explores her fascination and beautiful depictions of the birds she often observes and studies in their natural habitat. "I record what I see, and am passionate about the scenes I can immortalize on canvas. That is my work's importance," the artist reveals. The exhibit will present 15 new paintings.

Leading up to the exhibition, Erickson will be in Charleston and surrounding areas painting in Plein-Air, a preferred method working on location in the tradition of painters since the French Impressionists.

Erickson has been painting ever since she can remember, growing up in Connecticut, and sold her first artwork to Gulf + Western Industries in Stamford, CT, at age 13. It wasn't until 1993 that she realized her long held dream to pursue art as a career and began painting professionally.

Erickson's day begins before sunrise, and ends after the last sunset painting. Since 1998, she has divided her time between Marshville, NC, and Venice, FL.

Erickson shares the following about her influence, "The love of the outdoors has always been a part of my life. I remember as a child fishing with my Mom on opening day in the spring in Connecticut, the river gliding by and the sounds of red-winged



Work by Mary Erickson

blackbirds. As I get older, I appreciate more than ever the beauty that surrounds us." Traveling is also a large part of her influence and is essential to the artist.

Erickson is a founding member of SPAA (Southern Plein Air Artists) and a member of The Group of Eight, and the Florida Four, all Southern-based alliances that are intent on recording the scenery of the rapidly vanishing natural southern landscape. She is a Signature Member of the American Society of Marine Painters (ASMA). Memberships also include the Oil Painters of America and the American Impressionist Society.

Helena Fox Fine Art, located in Historic Charleston, specializes in fine American representational art. Established in 2004, the gallery is a compilation of national and international artists.

For further information check our SC Commercial Gallery listings, call the gallery at 843/723-0073 or visit (www.helenafoxfineart.com).

Check us out at (www.carolinaarts.com) or e-mail to (info@carolinaarts.com)