

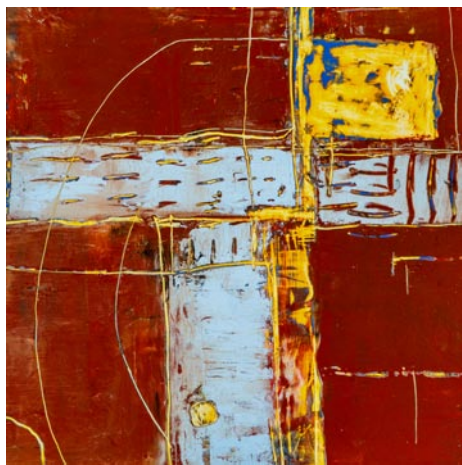
310 ART in Asheville, NC

continued from Page 5

es on career education, networking, support and camaraderie. Most members are based in the NYC area. The Asheville area has the second largest membership in the nation. New members are welcomed. Meetings are held in Asheville every 2-3 months.

For further information check our NC Commercial Gallery listings, call the gallery at 828/776-2716 or e-mail to (gallery@310art.com).

The next deadline will be Apr. 24th for the May 2014 issue of *Carolina Arts*. Check us out at (www.carolinaarts.com), e-mail to (info@carolinaarts.com), or call us at 843/825-3408.

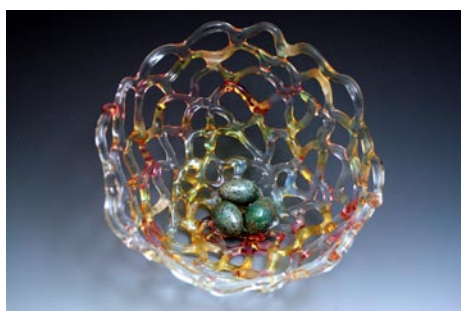


Work by Sandee Johnson

Woolworth Walk in Asheville, NC, Offers Works by Kyle Keeler and John Nelson

Woolworth Walk in Asheville, NC, will present *Keeler + Nelson*, featuring works in glass by Kyle Keeler and paintings by John Nelson, on view in the FW Front Gallery, from Apr. 1 - 29, 2014. A reception will be held on Apr. 4, from 5-7pm.

Kyle Keeler has been working with glass since 2001. He moved from Colorado to the Appalachian Mountains in 2007 and became further inspired by Asheville's unique, artistic community. As he continues to deepen his understanding of the complexity of glass, he has begun to explore the relationship glass can have with other materials.



Work by Kyle Keeler

Each piece is individually hand blown using a torch that burns in excess of 2500 degrees Fahrenheit, using a gas mixture of propane and oxygen. Upon completion the piece is placed into a kiln to anneal at 1050 degrees overnight. All glass color is made from metals and minerals from the earth so there are no paints, dyes, or glazes. These elements combined with silica sand create each color. Every color reacts differently



Work by John Nelson

to the slightest variance in temperature, so working with color is a delicate process. Borosilicate glass is the same glass formula as Pyrex glass, so it is a very strong material and made to last.

Cleveland-born, Sarasota-raised, professional guitarist and custom framer, John Nelson also moved to Asheville in 2007, trading hot days in the Florida sun and late nights with the band for cool, creative nights in his mountain home studio. Besides earning him a living for his family, framing design gave Nelson an outlet for his right-brain tendencies. But his fascination with

continued above on next column to the right

textures, color relationships, the use of positive and negative space and the use of art as a catalyst for emotional response drove him to create his own art as well.

"My paintings employ design to generate tension, and I use color for a release of that tension. I enjoy watching the art reveal itself layer after layer using newly discovered

techniques while eliminating subject matter. Having no formal training, I can create in a manner that knows no bounds."

For further information check our NC Commercial Gallery listings, call the gallery at 828/254-9234 or visit (www.woolworth-walk.com).

UNC Asheville in Asheville, NC, Offers First Art Fest - Apr. 10 - 13

UNC Asheville in Asheville, NC, offers its first-ever Arts Fest - Art, New Media, Video & Photography, from Apr. 10 - 13, 2014.

Events and programs include:

Thur.-Sun., Apr. 10-13 - David Holt's *Musical Mentor Photography Exhibit*, day and evening, Lipinsky Hall Lobby - David Holt's black and white film portraits of some of Appalachian music's greatest talents and Holt's personal mentors, including the late Doc Watson and Grandpa Jones, will be shown for the first time. Free.

Thur.-Sun., Apr. 10-13 - *New Media 13th Annual Juried Student Exhibition*, 9am-6pm, Highsmith Art and Intercultural Gallery - The new media works make use of cutting-edge technology to create and express new ideas in responsive design, storytelling, visualizing information, animation, video, installation and performance, with content and themes that include science, literature, music, history and multiculturalism. Free.

Fri. and Sat., Apr. 11-12 - Specially Selected Film and Video by Mass Communication Students, 7-9pm, Highsmith University Union, The Grotto - Friday evening's show will feature a juried collection of 2013 "Best of" short works including comedy, horror and more. Saturday evening's show features award winning Team UNCA "48

Hour" films, and the debut of four shorts that combine to create a feature film celebrating Asheville. (*Viewer discretion is advised.) Free.

Thur.-Sun., Apr. 10-13 - *Kercatch - Collaborative Sculpture* with Ron Fondaw, 9am-5:30pm, Thur.-Sat. and noon-5pm, on Sun., outside of Owen Hall - Ron Fondaw, in collaboration with UNC Asheville art students, will construct a sculpture using unfired, stabilized earth (adobe) over a 10-day period. Fondaw is professor of sculpture at Washington University in St. Louis, MO. Free.

Thur.-Sun., Apr. 10-13 - *International Photo Exhibit*, open during library hours, Blowers Gallery, Ramsey Library - This exhibition presents the winners of the International Photo Contest held annually by UNC Asheville's International Studies Program and Study Abroad Office. Free.

UNC Asheville's Arts Fest is sponsored by many UNC Asheville programs and departments including Arts and Ideas, with support from the Associate Provost, the Howerton Professor of the Humanities, d&b audiotechnik, Highland Brewing, 88.7 WNCW, and 98.1 The River.

For further information check our NC Institutional Gallery listings or visit (unca.edu/ArtsFest).

Bender Gallery in Asheville, NC, Features Works by Toland Sand

Bender Gallery in Asheville, NC, will present *Explorations*, a solo exhibition featuring the work of prominent glass sculptor, Toland Sand, on view from Apr. 4 through May 31, 2014. A reception will be held on Apr. 4, from 5-8pm. The artist will be in attendance and available for discussion during the reception.

Per Sand, "Explorations is a metaphor for my artistic life, my worldly life, and my spiritual life". His early life was one of living around the world including places

such as Carmel, Taiwan, Athens, D.C. and the mountains of Colorado. He never lived in any one place more than four years and at each stop, he was constantly exploring the uniqueness of the area. In 1972 Sand was initiated into the Inner Mysteries by his spiritual Master, Sant Kirpal Singh and meditates daily according to His instructions.

Highly ground and polished and technically perfect, each of Sand's crystal

continued on Page 24