

NC Institutional Galleries

continued from Page 46

vania County's finest artists and craftspeople. New works on display daily. Hours: Mon.-Sat., 10am-5pm. Contact: 828/883-2294 or at (www.number7arts.com).

Burlington

Point of View Gallery, 717 Chapel Hill Road, Burlington. **Ongoing** - Featuring works by member artists: Kathy Alderman, Frances Baker, India Cain, John Dodson, Steven Durand, Debra Farmer, Bill Ferree, Brenda Garner, Wendy Gellert, Michael Kennedy, Cheryl Knox, Peggy McCormick, Jacqueline Mehning, Christine Seiler, Lane Watson, and Rose Wenkel. Hours: Mon.-Fri., 10am-5pm and Sat. & Sun., 1-5pm. Contact: 336/270-4998 or at (www.PointOfViewGallery.com).

Burnsville

Burnsville Gallery, Toe River Arts Council, 102 W. Main St., Burnsville. **Community 2D Gallery, Through May 1** - "H2O and Other Interpretations," featuring works by Jean McLaughlin. **May 15 - June 19** - Featuring an exhibit of works by Kristan Five. **Ongoing** - Featuring works by artists from Mitchell and Yancey Counties sponsored by the Toe River Arts Council. Hours: Tue.-Sat., 10:30am-5pm. Contact: 828/682-7215 or at (www.toeriverarts.org).

Cary

Cary Gallery of Artists, 200 S Academy St, Ste 120, Ashworth Square, Cary. **Ongoing** - The gallery offers high quality art in a variety of styles. Paintings, pencil and colored pencil artwork varies from traditional still lifes and landscapes to abstracts. Portraits of people or animals are available. Photographic work captures magnificent landscapes, small moments in life, portraits, and far away places. The pottery and clay art includes edgy handbuilt pieces, thought-provoking sculpted masks, and decorative and functional pottery that captures images of nature. Our jewelry artists provide a wide range of hand-crafted necklaces, earrings, bracelets and other ornaments from metals, stones, beads and fused glass. Our glass artist creates stained glass hangings, custom stained glass windows and fused glass art. You can also find unusual hand-made books and hand-painted porcelain both antique and new. Hours: Wed.&Thur., 11am-3pm and Fri.&Sat., 11am-5:30pm. Contact: 919/462-2035 or at (www.carygalleryofartists.org).

Chapel Hill - Carrboro



Minoo Emami, Iranian, born 1963, "Andaruni", 2021, acrylic on canvas, projected video, fabric, fluorescent light, and wood support, 84 x 120 x 10 inches. Lent by the artist.

Ackland Art Museum, UNC - Chapel Hill, Columbia & Franklin Streets, Chapel Hill. **Through May 22** - "Micro/Macro: Selected Works by the MFA Class of 2021," with guest curator Fred Joiner. Drawing from thinkers like Audre Lorde (1934 - 1992) and other Black Feminists/Womanists, Micro/Macro suggests to its viewers that "the personal is political" or that a micro perspective and a macro impact are inextricably linked. Poets and writers of all stripes, in content and in form and structure, suggest to readers that a piece of writing can move from the specific to broad (and back), that personal narratives can make larger arguments beyond the personal; the works by these visual artists are no different. Participating artists are the five UNC-Chapel Hill Class of 2021 Master of Fine Arts in in Studio Art candidates: Sheyda Arabyzadi, Minoo Emami, Alena Mehić, Vonnie Quest, and Krysta Sa. **Through May 14** - "Object Lessons". Each year, the Ackland teaches thousands of university students, in hundreds of classes, across dozens of disciplines. The artwork they study spans geographic, temporal, and material designations and their learning objectives vary. Yet nearly all of these encounters begin with the same question: what do you see? It is a simple, yet surprisingly challenging question for many. It does not ask "what do you know," or even "what do you think this is about?" It demands that students — and all of us — slow down and actually look at what's before us, suspending judgment and assessing what is

there. From there, the process twists and turns. This spring, art history students use the works on view to explore diverse expressions of American identities. Students learning about modernism in Europe examine the innovative styles and subjects that emerged in uncertain times. First year students learn to analyze those same artworks and consider them in dialogue with war and conflict in Europe and America throughout the twentieth century. Students learning about ancient Rome analyze the material culture of everyday life and consider how it sheds light on people's beliefs and behaviors. Folklore students consider the creation of traditions through North Carolina pottery. **Held over until July 4** - "Instruments of Divination in Africa: Works from the Collection of Rhonda Morgan Wilkerson, Ph.D.", a special installation featuring sculptures and other objects used by diviners in Central and West African cultures, has also been extended. **Through July 4** - "holding space for nobility: a memorial for Breonna Taylor". Breonna Taylor was fatally shot by officers of the Louisville Metro Police Department after they forced entry into her home on March 13, 2020. She was twenty-six years old. In the months since her death, her story has become a part of national conversations about racial violence and an impetus for activism against systemic injustices. In this immersive commission, artist Shanequa Gay (American, born 1977) transforms the museum's mixed-use ART& room into an area that can "hold space" for Taylor's memory. Through acrylics and oils, Gay renders publicly shared images of Taylor's face from happy times in her life as a reminder of her roles as daughter, niece, friend, and, as Gay writes, "someone who was loved and is worthy of justice and being seen." **Through Feb. 13, 2022** - "Clouding: Shape and Sign in Asian Art". This year-long installation explores the diverse forms and functions of clouds in the arts of Asia, juxtaposing works of art in different media and from different time periods spanning the Bronze Age to the present. **Museum Store Gallery** (Franklin and Columbia Street), Store hours: Mon.-Sat., 10am-5:30pm & Sun., noon-5pm. Museum Hours: Wed.-Sat., 1-5pm. Contact: 919/966-5736 or at (www.ackland.org).



Work by Barbara Tyroler

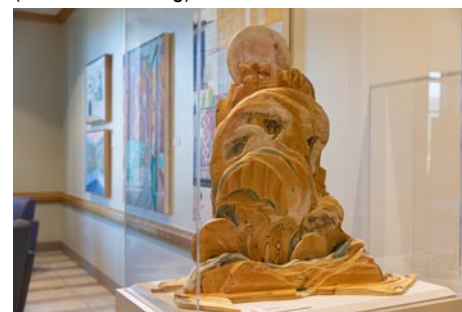
FRANK, University Place, Chapel Hill. **Through June 5** - "Seeing Trees". The exhibition features current works by FRANK member artists; woodworker/furniture maker Keith Allen, wood sculptor Jim Oleson, and photographer Barbara Tyroler and guest artists (and former members!) photographer Alan Dehmer, ceramicist Judith Ernst, and drawer/illustrator/mixed media artist Jean LeCluyse. **Ongoing** - Featuring work from over 70 artists. Frank offers more than you'd expect from an art gallery. Frank is a collective, founded by the area's finest artists working together to open the door for creative innovation in the arts. Hours: Tue.-Sat., noon-5pm or by appt. Contact: 919/636-4135 or at (www.frankisart.com).

The ArtsCenter, 300-G East Main Street, Carrboro. **Ongoing** - Nurturing the arts in the triangle since 1974 through performance, education and exhibition. Hours: Mon.-Fri., 9am-9pm and Sat. 10am-5pm. Contact: 919/929-2787 or at (<http://artscenterlive.org>).

Charlotte Area

Bechtler Museum of Modern Art, Levine Center for the Arts, 420 South Tryon St., Charlotte. **Fourth-Floor Gallery, Through Sept. 26** - "Twentieth Century Women," an exhibition that focuses exclusively on the artistic achievements of women in the collections of the Bechtler museum and Bechtler family.

Featuring over 100 art works by 22 artists, this exhibition explores a century of artistic production and the ways that women fit into, challenge and redefine the narrative of modern art. Alongside paintings, sculptures, drawings, collages, prints, and artists' books, biographical information and material from the museum's library and archive are featured. These materials illuminate the incredible lives of the women featured in this exhibition and celebrate their contributions to twentieth-century modernism and its legacies. **Second-Floor Gallery, Through July 4** - "Josef Albers: The Interaction of Color". The exhibition is inspired by the Bechtler Museum's rare German edition of The Interaction of Color, featuring 81 silkscreen color studies that serve as a record of Albers' experiential way of studying and teaching color. Born in Germany in 1888, Josef Albers was one of the most influential artist-educators of the 20th century. Best known for his iconic color square paintings, his exploration and expansion of complex color theory principles and dedication to experiential education based on observation and experimentation, radically altered the trajectory of arts education in the United States. **Ongoing** - The Bechtler Museum of Modern Art is named after the family of Andreas Bechtler, a Charlotte resident and native of Switzerland who assembled and inherited a collection of more than 1,400 artworks created by major figures of 20th-century modernism and donated it to the public trust. The Bechtler collection comprises artworks by seminal figures such as Alberto Giacometti, Joan Miro, Jean Tinguely, Max Ernst, Andy Warhol, Alexander Calder, Le Corbusier, Sol LeWitt, Edgar Degas, Nicolas de Stael, Barbara Hepworth and Picasso. Only a handful of the artworks in the Bechtler collection have been on public view in the United States. Admission: Yes. Hours: Mon., Wed.-Sat., 10am-5pm; Sun. noon-5pm; and open until 9pm the 1st. and 3rd. Fri. of each month. Contact: 704/353-9200 or at (www.bechtler.org).



Work by Randy Dean

Bill and Patty Gorelick Gallery at Central Piedmont Community College's Cato Campus, Cato III, 8120 Grier Road, Charlotte. **Through June 30** - "Life Lived in Layers," featuring works by Randy Dean. Featuring seven art wood sculptures which represent an ever evolving, very physical, and deeply meditative process that Dean goes through with her artistic process. **Through June 30** - "When Nature Takes Back," featuring works by Malu Tan. Tan's paintings show an expression of an intimate relationship with the environment which include bodily colored and textured abstract expressions of nature. Hours: open while campus is open, but reservation help help us alert our security team to visitors, provide directions to the galleries, and COVID-19 security protocol instructions to the visitors. Contact: 704/330-6869 or e-mail to (foundation@cpcc.edu) to schedule an appointment. For directions to Central Piedmont's campuses, visit (cpcc.edu/locations).



From the collection of Dr. Larry Brady

Bill and Patty Gorelick Gallery at Central Piedmont Community College's Central Campus, North Classroom, 1320 Sam Ryburn Walk, Charlotte. **Through June 30** - "Private Collection of Dr. Larry Brady". The 18 pieces exhibited represent a broad and diverse range from Brady's eclectic selection of paintings, engravings, photographs, furniture and sculptures. Brady enjoys living with each piece of art in his collection and sharing them with as many people as possible. Hours: open while campus is open, but reservation help help us alert our security team to visitors, provide directions to the galleries, and COVID-19 security protocol instructions to the visitors. Contact: 704/330-6869 or e-mail to (foundation@cpcc.edu) to schedule an appointment. For directions to Central Piedmont's campuses, visit (cpcc.edu/locations).

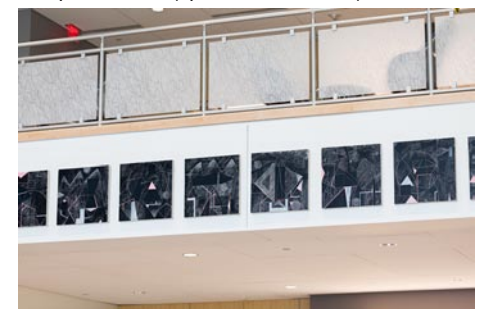
Bill and Patty Gorelick Gallery at Central Piedmont Community College's Harper Campus, Harper IV, 315 W. Hebron St., Charlotte. **Through June 30** - "Almost Home," featuring works by Tom Delaney. This exhibit explores the home as a visual metaphor and includes his three-dimensional bird sculptures. Hours: open while campus is open, but reservation help help us alert our security team to visitors, provide directions to the galleries, and COVID-19 security protocol instructions to the visitors. Contact: 704/330-6869 or e-mail to (foundation@cpcc.edu) to schedule an appointment. For directions to Central Piedmont's campuses, visit (cpcc.edu/locations).



Work by Marvin Espy

Bill and Patty Gorelick Gallery at Central Piedmont Community College's Harris Campus, Harris II, 3210 CPCC Harris Campus Drive, Charlotte. **Through Dec. 31** - Featuring works by Marvin Espy. Espy's paintings express his love for color by incorporating his passion for the city and representing the spirit of its people. **Through Dec. 31** - Featuring works by Judith Ernst. Ernst creates conceptual and even contemplative ceramic vessels, including new pieces which incorporate words. Hours: open while campus is open, but reservation help help us alert our security team to visitors, provide directions to the galleries, and COVID-19 security protocol instructions to the visitors. Contact: 704/330-6869 or e-mail to (foundation@cpcc.edu) to schedule an appointment. For directions to Central Piedmont's campuses, visit (cpcc.edu/locations).

Bill and Patty Gorelick Gallery at Central Piedmont Community College's Levine Campus, Levine II, 2800 Campus Ridge Road, Matthews. **Through June 30** - "Icefields," featuring works by Elijah Kell. Kell, a young glasswork artist, works with glass to reflect a striking contrast between icy terrain and blooming plant life. **Through June 30** - Featuring works by Molly Partyka. Partyka's abstract paintings use color play in which the colors move across the canvas, interacting with shapes and textures. She works to convey the beauty of human interaction and nature in the simplest of forms. Hours: open while campus is open, but reservation help help us alert our security team to visitors, provide directions to the galleries, and COVID-19 security protocol instructions to the visitors. Contact: 704/330-6869 or e-mail to (foundation@cpcc.edu) to schedule an appointment. For directions to Central Piedmont's campuses, visit (cpcc.edu/locations).



Work by Tom Stanley

Bill and Patty Gorelick Gallery at Central Piedmont Community College's Merancas Campus, Merancas IV, 1930 Verhoeff Dr., Huntersville. **Through June 30** - "Face Jugs," from the Gorelick family private collection featuring works by potters from the Carolinas, Georgia, and Texas. Representing a small sample of the Gorelick family art collection, some of the Face Jugs depict scenes of everyday or working life, though most were made in the traditional fashion and intended to look as scary as possible so as to ward off evil spirits. The more ferocious the stronger the good luck charm! **Through June 30** - "Frieze," by Tom Stanley. Stanley's series are often hung as a frieze even as he works on groups of paintings. Size, imagery, color, and format for each series is distinct and helps to create a visual theme within the group of related works. Hours: open while campus is open, but reservation help help us alert our security team to visitors, provide directions to the galleries, and COVID-19 security protocol instructions to the visitors. Contact: 704/330-6869 or e-mail to (foundation@cpcc.edu) to schedule an appointment. For directions to Central Piedmont's campuses, visit (cpcc.edu/locations).

continued on Page 48