

NC Institutional Galleries

continued from Page 52

Cary Arts Center, 101 Dry Avenue, Cary. **Cary Arts Center Gallery, Through May 14** - "Pastel Society of North Carolina". "PSNC exists to provide fellowship and encouragement, promote standards of excellence in the use of the medium and further the education of the general community to the intrinsic beauty and permanency of art created from soft pastels"; our members range from talented amateurs to highly skilled professionals. To learn more about PSNC visit (<https://www.pastelsocietyofnc.com/>). **May 17 - July 8** - "New works by Jan-Ru Wan: Yearning to Breathe". A reception will be held on June 30, from 6-8pm. Our world faces natural disasters, viruses, and man-made tragedies that disrupt our daily lives, cause displacements, and distort beliefs and hampers progress. Survival and finding our bearings within this constant chaos is the common theme of this exhibition. Using objects as metaphors, I transform them through various textile techniques, such as shibori, screen printing, hand stitching, machine embroidery, and construction. With them I address a range of human experiences, including longing, loss, constraint, chaos, and provide a voice for those who cannot speak for themselves. The title is derived from Emma Lazarus' sonnet inscribed on the Statue of Liberty. To learn more visit (www.janruwan.com). **Cary Arts Center Principal's Hall, Through May 14** - "Janine B. LeBlanc: Plush". Janine LeBlanc worked for more than 20 years as a graphic artist. She returned to the graduate program at the College of Design at NCSU, intending to become a textile designer, but found museum work and bead weaving instead. Using 11/0 seed beads, and an o-loom peyote stitch technique, she explores fabric patterning from both the collection of the Gregg Museum of Art & Design and contemporary textiles. Plush fabric, depicting faux fur and orals, is re-interpreted into patterns using the BeadTool computer program. Janine enjoys the detachment that happens when objects are removed in multiple steps from their original form and reworked into another medium. **May 17 - July 8** - "Origins of PRIDE: Stonewall Uprising". The Library of Congress National Archives Photography Collection provides a glimpse of the Stonewall demonstration from New York City in 1969 and subsequent years peaceful marches to commemorate LBGTQ + people that moved a nation to be more tolerant, understanding and accepting of our differences. To learn more about Stonewall Uprising history visit Library of Congress. **Cary Arts Center Display Cases, Through May 14** - "Shop Space: Lucas House, MC Floyd & Bill Knight". Shop Space is a nonprofit focused on education and providing an open workshop for the community. Covering a range of disciplines including forging, welding, small metals, and machining, our community shop is open for participants to work with a wide variety of tools not easily accessible to the backyard metalworker. To learn more visit (<https://www.shopspace.org/>). **May 17 - July 8** - "Lisa Yerby: Beaded Dreams - A Fanciful Journey". A reception will be held on June 30, from 6-8pm. Yerby's beaded gures are inspired by color, shape and texture. She feels their personality brings fun to any space. Retired from teaching elementary students in Texas about two and a half years ago, Yerby moved to Raleigh, to be closer to family and found herself revisiting an artform that she had enjoyed for several years before. Most of the beads are 11/0 glass seed beads and they are applied one at a time. Hours: Mon.-Thur., 9am-10pm & Fri.-Sat., 9am-11pm. Contact: 919/469-4069 or at (www.townofcary.org).

Cary Gallery of Artists, 200 S Academy St, Ste 120, Ashworth Square, Cary. **Ongoing** - The gallery offers high quality art in a variety of styles. Paintings, pencil and colored pencil artwork varies from traditional still lifes and landscapes to abstracts. Portraits of people or animals are available. Photographic work captures magnificent landscapes, small moments in life, portraits, and far away places. The pottery and clay art includes edgy handbuilt pieces, thought-provoking sculpted masks, and decorative and functional pottery that captures images of nature. Our jewelry artists provide a wide range of hand-crafted necklaces, earrings, bracelets and other ornaments from metals, stones, beads and fused glass. Our glass artist creates stained glass hangings, custom stained glass windows and fused glass art. You can also find unusual hand-made books and hand-painted porcelain both antique and new. Hours: Wed.&Thur., 11am-3pm and Fri.&Sat., 11am-5:30pm. Contact: 919/462-2035 or at (www.carygalleryofartists.org).

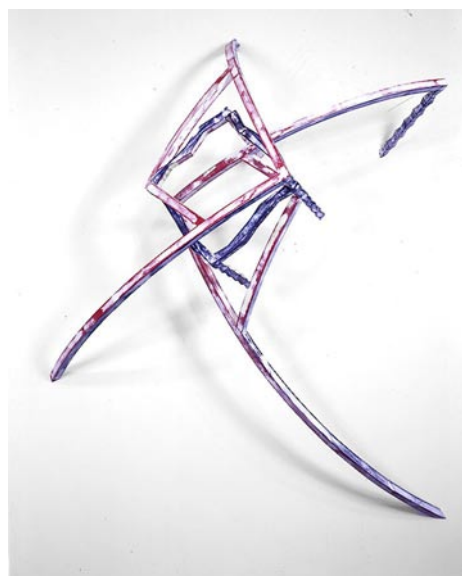
Herbert Young Community Center, 101 Wilkinson Avenue, Cary. **Through July 14** - "Joanna Sokolowska: Paint the Intangible Emotion". "The human being, with his dual nature - sensual and spiritual, is my biggest inspiration and focus. Through gurative art I transfer elemental content of human existence that people, in a natural

way, may come to read, without knowing the code and cultural context. My style combines elements of realism with expressive, emotional quest for power of expression." To learn more, visit (www.joannasokolowska.com). Hours: Mon.-Fri., 9am-10pm; and Sat., 9am-6pm. Contact: 919/4604965 or (www.townofcary.org).

Page-Walker Arts & History Center, 119 Ambassador Loop, Cary. **Through May 13** - "ART-QUILTSinspiration - Professional Art Quilters Alliance - South". Where do artists' ideas come from? What inspires them to begin the creative process? Is it something outside of themselves like another person, a space, an experience, nature, urban life, music? Or is it internal, like moods and emotions, philosophies, critiques? Does it reference an artist from the past or a cultural style, or is it a continued exploration of the artist's previous work? Members of PAQA-South created multi-layered textiles joined by stitching and share the inspiration behind it. **May 17 - July 3** - "Fine Arts League of Cary 28th Annual Juried Exhibition". A reception will be held on May 26, from 6-8pm. Come see some of the best art in the region at Fine Arts League of Cary's "28th Annual Juried Exhibition", juried by nationally recognized Cary artist Susan Hecht. Art on display in the first and second floor galleries. **May 17 - July 3** - "Cely Chicurel: Clay Creations". A reception might be held on May 19 or 26, from 6-8pm. Chicurel shares her playful, hand-built clay creations including animals, castles, dragons, wizards, tree people and other imaginary creatures. Hours: Mon.-Thur., 10am-9:30pm; Fri., 10am-5pm; & Sat., 10am-1pm. (It is strongly advised that you call ahead about hours this space will be open.) Contact: 919/460-4963.

Town Hall Gallery, City of Cary Town Hall, 316 North Academy Street, Cary. **Through July 14** - "Mary Wassil: NC Beaches & Mountains". "I love to create landscape paintings that are abstract and impressionistic. I enjoy working with palette knife and oil paint for bold color and texture. The palette knife allows me to apply thick paint and retains a vibrancy of color. My painting process starts with a reference photo I have taken during a hike with my dogs or a family vacation. I use the photo to create the under painting in an acrylic medium on canvas. I then paint additional layers with oil, leaving some of the under painting peeking through wherever possible". Mary is heavily inspired by the impressionist movement which is shown through her abstract landscape painting. With the use of a palette knife Mary applies thick vibrant colors which gives her paintings bold colors and texture. Her painting process starts with picking a reference photo taken from hikes she takes her dogs on or various family vacations. She utilizes her process of layering to allow the underpainting to peek through. Hours: Mon.-Fri., 8am-5pm. Contact: 919/469-4061.

Chapel Hill - Carrboro



Work by Mel Kendrick

Ackland Art Museum, UNC - Chapel Hill, Columbia & Franklin Streets, Chapel Hill. **Through May 28** - "Ghost of a Dream: Aligned by the Sun (Through the Revolution)". In a time of travel bans, immigration debates, climate change, and a global pandemic, the artist team "Ghost of a Dream" has created their multi-faceted project "Aligned by the Sun" in an effort to bring hope to our collective experience and unify our fractured planet. To assemble the footage necessary for this endeavor, "Ghost of a Dream" has collaborated with artists in over 220 nations by asking them to capture a short video of the sunset. All but seven of the 195 countries recognized by the United Nations, as well as many non-UN nations and territories, are represented by these videos. These videos provide the source material for many iterations of the project, including large installations, video collages, and still-image composites. **Through July 30** - "Beyond Wood: Works from the Collection of Rhonda Morgan Wilkerson '86 (PHD)." Since

2018, the Ackland has exhibited five long-term installations of works from Rhonda Wilkerson's distinguished collection of African art. These have focused on an individual artist, on types of objects, and on specific functions. This presentation takes a different approach by highlighting a variety of materials, ones that differ from the wood of masks and figurative sculptures, more conventional works of art that have long been favored in museum displays of the arts of Africa. In contrast, the objects in Beyond Wood are made with materials associated more with utilitarian uses: glass, metal, and clay. They include a diviner's beaded necklace of the Yoruba culture (present-day Nigeria), an ornamental knife of the Konda culture (present-day Democratic Republic of the Congo) and two terracotta portrait heads from the Akan culture (present-day Ghana). This installation has been organized by Michael Baird, 2022 Joan and Robert Huntley Scholar at the Ackland, and PhD student in art history. **Museum Store Gallery** (Franklin and Columbia Street), Store hours: Mon.-Sat., 10am-5:30pm & Sun., noon-5pm. Museum Hours: Wed.-Sat., 1-5pm. Contact: 919/966-5736 or at (www.ackland.org).

New Location

FRANK, 370 E Main St. Carrboro, Carrboro's East Main Square, next to Hickory Tavern and the Hampton by Hilton hotel, Chapel Hill. **Ongoing** - Featuring work from over 70 artists, Frank offers more than you'd expect from an art gallery. Frank is a collective, founded by the area's finest artists working together to open the door for creative innovation in the arts. Hours: Tue.-Sat., noon-5pm or by appt. Contact: Contact: 919/636-4135 or at (www.frankisart.com).

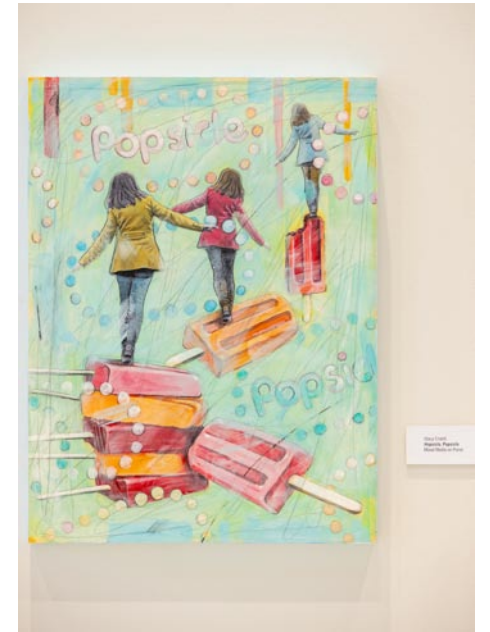
The ArtsCenter, 300-G East Main Street, Carrboro. **Ongoing** - Nurturing the arts in the triangle since 1974 through performance, education and exhibition. Hours: Mon.-Fri., 9am-9pm and Sat. 10am-5pm. Contact: 919/929-2787 or at (<http://artscenterlive.org>).

Charlotte Area

Bechtler Museum of Modern Art, Levine Center for the Arts, 420 South Tryon St., Charlotte. **Second and Third Floor Gallery, On View Now** - The Collection. The Bechtler Museum of Modern Art is the only museum in the Southern United States dedicated to European and American Modern Art and its legacies. Capturing a remarkable era of art history from the collection of the Zürich-based Bechtler family, the Bechtler Museum of Modern Art collection includes works by some of the most important and influential figures of modernism. Featuring 28 key works of art and nine sculptures from The Bechtler Collection, this intimate exhibition is displayed throughout two of the museum's galleries. The second-floor gallery highlights two-dimensional artworks by Alexander Calder, Le Corbusier, Edgar Degas, Max Ernst, Alberto Giacometti, Hans Hartung, Barbara Hepworth, Jasper Johns, Paul Klee, Fernand Legér, Alfred Manessier, Joan Miró, Kenneth Noland, Pablo Picasso, Bridget Riley, Niki de Saint Phalle, Gustave Singier, Nicolas de Staël, and Andy Warhol. The third-floor gallery is dedicated to select three-dimensional artworks and sculpture from the collection by artists including Raffael Benazzi, Miguel Berrocal, Max Bill, Lynn Chadwick, Eduardo Chillida, Robert Liehard, Bernard Meadows, and Elizabeth Turk. **Ongoing** - The Bechtler Museum of Modern Art is named after the family of Andreas Bechtler, a Charlotte resident and native of Switzerland who assembled and inherited a collection of more than 1,400 artworks created by major figures of 20th-century modernism and donated it to the public trust. The Bechtler collection comprises artworks by seminal figures such as Alberto Giacometti, Joan Miro, Jean Tinguely, Max Ernst, Andy Warhol, Alexander Calder, Le Corbusier, Sol LeWitt, Edgar Degas, Nicolas de Stael, Barbara Hepworth and Picasso. Only a handful of the artworks in the Bechtler collection have been on public view in the United States. Admission: Yes. Hours: Mon., Wed.-Sat., 10am-5pm; Sun. noon-5pm; and open until 9pm the 1st. and 3rd. Fri. of each month. Contact: 704/353-9200 or at (www.bechtler.org).

Bill and Patty Gorelick Gallery, at Central Piedmont Community College's Cato Campus, Cato III, 8120 Grier Road, Charlotte. **Through June 16** - "Calmly Flaunting," featuring works by Sam Spees. Samuel Spees' pursuit of perfection is the foundation of his inspiration as an artist and why he is drawn to glass as a process. "Each of us renders the world through a distinctive lens. This observation is biased in many ways, pertaining to memories and experiences, in addition to our own emotional construct. This body of work is evidence of how I decipher the beautifully perfect world around me. It is shaped with pieces of glass, both found and purposely made, that have been previously pulled, pinched, and cut. When melted together, they seamlessly flow throughout the body, creating a colorful vignette of time and

memory. These landscapes of pigment yield a much deeper understanding of my perception, helping to explore distortion in pattern, together with my emotional connection to color in our natural world." **Through June 16** - "Bennett Waters Fine Art" Waters says, "I began painting after retiring from a long advertising career. I wanted to create something I could touch and hold, not just ideas. I paint primarily in oil and have spent nearly 20 years exploring how colors and shapes can become my new words. My subjects and series of artwork are varied but bend primarily toward two far flung viewpoints: capturing urban streetscapes and capturing the aerial perspectives of the earth. I choose subjects that can let me explore deep saturated color, the rhythms of shapes and movement, and the lines that connect them. Perspective is important to me in my compositions, as indicated in the subjects I choose and the way I paint them." Hours: open while campus is open, but reservations help us alert our security team to visitors, provide directions to the galleries, and COVID-19 security protocol instructions to the visitors. Contact: 704/330-6869 or e-mail to (foundation@cpcc.edu) to schedule an appointment. For directions to Central Piedmont's campuses, visit (cpcc.edu/locations).



Work by Stacy Crabill

Bill and Patty Gorelick Gallery, at Central Piedmont Community College's Central Campus, North Classroom, 1320 Sam Ryburn Walk, Charlotte. **Through June 16** - "Things That Fall in Your Path," featuring works by Stacy Crabill. Crabill says, "Sweets, text, and vintage photos of interesting people are all things that intrigue me. The colors and shapes of candy, as well as its packaging, has such power over our senses. I am constantly exploring the sources of our desire for sugar, delving into the concurrent roles played by clever marketing and our body's physical response. The thoughtful utilization of text also plays a role in my work. Whether it is a list of ingredients or witty words, the use of words and letters is an ever-present means of communication. Most recently I have incorporated interesting vintage images of figures. Photos from the past evoke a sense of questioning about the lives and personalities of those who came before us. My work strives to combine all of these seemingly unrelated elements to create a world in which their relationships become connected in a new and somewhat believable space." Hours: open while campus is open, but reservations help us alert our security team to visitors, provide directions to the galleries, and COVID-19 security protocol instructions to the visitors. Contact: 704/330-6869 or e-mail to (foundation@cpcc.edu) to schedule an appointment. For directions to Central Piedmont's campuses, visit (cpcc.edu/locations).

Bill and Patty Gorelick Gallery, at Central Piedmont Community College's Harper Campus, Harper IV, 315 W. Hebron St., Charlotte. **Through June 16** - "The Ceramic Art of Joseph Sand. Joseph Sand (b. 1982, Austin, MN) trained as a sculptor at the University of Minnesota, receiving a B.F.A. in 2006. During his undergraduate courses, he studied for one year in Italy, followed by another year in England after receiving a very competitive, college-wide scholarship. While in England, he worked alongside many prolific potters, including Svend Bayer and Clive Bowen, which heavily influenced his direction as an artist, taking up functional pottery as a means of personal expression. He completed a three and one-half year apprenticeship with Mark Hewitt in December of 2009 and now resides in Randleman, North Carolina. His work combines the styles of traditional, Southern alkaline glaze ware and East Asian design, among others. Using two wood-fired kilns, both salt and ash glazed wares are produced, ranging in size from very large sculptural vases to planters and a variety of beautiful, functional tableware. In 2015, Joseph expanded his creative range to include large, hand-built sculptural ceramics.

continued on Page 54