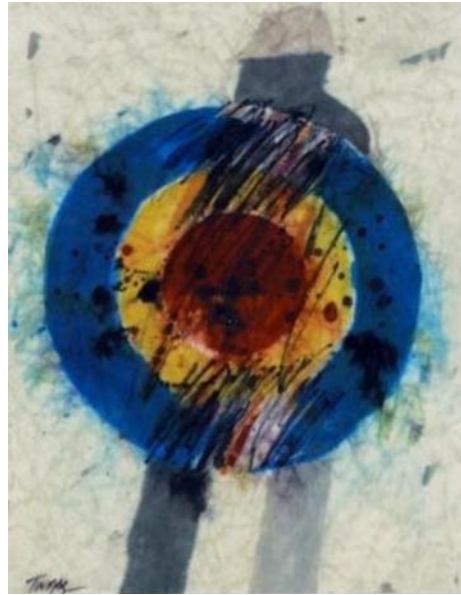


SC Institutional Galleries

continued from Page 37

Guild's 49th year of Art in the Park". We will have over 40 artists from the East Coast and as far away as Tennessee with about 15 of those artists from our local area. Typical art will include Paintings, Woodworking, Photography, Jewelry, Fabric, Glass, Metal, Pottery and Stone. No admission charge. Child and Pet Friendly. Contact: JoAnne Utterback at 843/446-3830 or (wacg.org/art-in-the-park/).



Dr. Leo Twiggs, "Targeted Man Standing" 2009

Franklin G. Burroughs • Simeon B. Chapin Art Museum, 3100 South Ocean Blvd., beside Springmaid Beach, Myrtle Beach. **Through Aug. 28** - "Leo Twiggs | Resilience". Leo Twiggs (b. 1934, St. Stephen, SC) of Orangeburg, SC, is an esteemed batik artist. His work often speaks to personal life experiences, trials and tribulations that in many ways are universal while, at the same time, offers a sense of hope, renewal and resilience with the brilliance of his palette, composition, iconography and dynamism. Over the course of his over-50-year career, Twiggs has developed his own innovative technique for painting his batiks, setting his work apart – and making it highly recognizable – from the traditional medium. With over 75 one-man shows, Twiggs' work has received international recognition. **Through Sept. 4** - "Joe Karlovec | Private Property". Karlovec's exhibition consists of 12 large-scale photographic images woven into textiles using a jacquard loom. Karlovec uses the textiles to create multi-dimensional fiber collages that surprise the viewer with their texture and intensity. **Through Sept. 4** - "Edward Rice | Beyond Depiction". This retrospective exhibition is a collection of 36 architectural images spanning the last 26 years of his award-winning career. Rice's paintings capture the impression of their subjects while simultaneously bringing attention to individual details such as a door, a window, or a cornice. **Through Sept. 4** - "Lynne Clibanoff | Inside Out". Clibanoff creates small-scale box constructions with architectural detail that leaves viewers moving around -- looking around corners, up stairways, or through windows. Hours: Tue.-Sat., 10am-4pm & Sun., 1-4pm. Contact: 843/238-2510 or at (www.myrtlebeachartmuseum.org).

Seacoast Artists Gallery, located at The Market Common, 3032 Nevers Street, Myrtle Beach. **Ongoing** - features the works of over 70 local artists of the Seacoast Artists Guild of South Carolina, a nonprofit visual arts organization dedicated to advancing excellence in the visual arts through teaching, exhibits, workshops and special events. Guild membership benefits include monthly meetings, programs & presentations; and opportunities to participate in Spring & Fall Art Shows and Web Gallery. Artwork includes oil, acrylic, watercolor, fiber art, mixed media, clay, metal engraved jewelry, sculpture, assemblage, and fine art photography. Art classes and workshops offered. Hours: Mon.-Sat., 10am-6pm and Sun., noon-6pm. Contact: 843.232.7009, e-mail at (seacoastartistsgallery@gmail.com) or at (seacoastartistsguild.com).

Newberry

Newberry Arts Center, 1200 Main Street location, Newberry. **Ongoing** - The Newberry Arts Center was established in 2014 and is operated by the City's Parks, Recreation and Tourism Department. In less than a year a solid arts program was established that includes programs for all ages. The mission of the Newberry Arts Center (NAC) and Newberry Arts Program is to provide quality arts experiences to all interested citizens and increase support for working artists while creating appreciative current and future art patrons by involving the diverse population and fostering local economic growth while enhancing the quality of life for all residents. The NAC also established and hosted the first ever South

Carolina Clay Conference, an annual conference for clay enthusiasts held in Newberry each year. Hours: Call for hours. Contact: 803/597-1125 or at (www.NewberryArtsCenter.com).

North Charleston



Work by Tanya Craig

Park Circle Gallery, formerly the Olde Village Community Building, 4820 Jenkins Avenue, in the bustling Park Circle neighborhood of North Charleston. **July 6 - 31** - The City of North Charleston's Cultural Arts Department is pleased to announce that concurrent solo exhibitions of paintings by Columbia-based artist Christopher Murphy and fused glass works by local artist Tanya Craig. A reception will be held on July 9, from 5-7pm. In his exhibit, "United We Stand", Christopher Lane presents a collection of expressive, contemporary paintings that emphasize a unity amongst us, regardless of party, ethnicity, race, religion, and gender. In her exhibit, "All the Colors Between Black and White", local artist Tanya Church-Craig presents a collection of fused glass works, ranging from functional pieces, such as bowls and platters, to abstract decorative works. **Ongoing** - In addition to the monthly exhibitions, the "gift shop" at the North Charleston City Gallery, which features a variety of items by local artists, will also be moved to PCG. Cultural Arts will also continue to host art workshops and recurring meetings for art groups and guilds in the space once gatherings are safe to resume. Admission: Free. Hours: Tue.-Fri., 10am-6pm & Sat., noon-4pm. Contact: 843/740-5854, or at (https://www.northcharleston.org/residents/arts-and-culture/).

ALTERNATE ART SPACES - North Charleston North Charleston Riverfront Park, 1001 Everglades Dr., The Navy Yard at Noisette (former Charleston Naval Base), North Charleston. **Through Mar. 20, 2022** - "National Outdoor Sculpture Competition and Exhibition". The fifteenth annual "National Outdoor Sculpture Competition and Exhibition" FY21/22 opens April 28 at the stunning North Charleston Riverfront Park. The 11-month exhibition features 13 pieces by established and emerging artists from 10 states displaying imaginative and thought-provoking outdoor sculpture. Visitors can enjoy the sculpture displays among ten acres of walking paths, a fishing pier, boardwalk, playground, and children's play fountain. Organized and presented by the City of North Charleston Cultural Arts Department. Visit the (NorthCharlestonArtsFest.com/national-outdoor-sculpture-competition-exhibition) for images and award info. Hours: daylight hours. Contact: 843/740-5854 or at (https://www.northcharleston.org/residents/arts-and-culture/).

Orangeburg

Cecil Williams Civil Rights Museum, 1865 Lake Drive, Orangeburg. **Ongoing** - Established in 2019, the exquisite ultra-modern facility displays 1000 images of the Civil Rights Movement, but from the perspective of The Epochal South Carolina Events That Changed America. The massive archives comprise the largest collection of images of this type among all museums in the United States; including the Atlanta based High Museum which archives 300 images. The images were created by the founder, Cecil Williams, who began photography at age 9 and covered almost all historically significant events in South Carolina; from 1950 Briggs v. Elliot in Summerton, thru the 1969 Charleston Hospital Workers' Strike...and Beyond. From 1955 through 1969, Williams was a freelance journalist for "JET" magazine. His images have appeared in thousands of magazines, newspapers, historical publications, and motion picture productions. The museum design itself is part of the founders' DNA because; upon graduating from high school, Williams wanted to attend Clemson University to study architecture but denied because of his race. He then purchased a drafting board and through the years, designed three residences; including one featured in "EBONY", and the museum's design which has evolved into a living history facility. Hours: call ahead for hours. Contact: call 803-531-1662 or at (www.cecilwilliams.com).

I.P. Stanback Museum and Planetarium, SC State University, 287 Geathers Street, Orangeburg. **Ongoing** - "The Influence of James Brown: His Imprint on Music, Dance, Style and Politics". In 2008, the Stanback was selected to preserve the legacy of James Brown, when museum curators were invited to Brown's Estate in Beech Island, SC, to retrieve items for preservation. The collection boasts an impressive list of items that capture the life and legacy of the 'Hardest Working Man in Show Business.' The collection features costumes, clothing, instruments, unpublished photographs, early cuts of vinyl recordings, handwritten music, awards, trophies and more. Hours: Mon.-Fri., 9am-5pm or by appt. Contact: 803/536-7174 or at (http://www.scsu.edu/researchoutreach/ipstanback-museumandplanetarium.aspx).

Lusty Gallery, Orangeburg County Fine Arts Center, Edisto Memorial Gardens, 649 Riverside Drive, Orangeburg. **Ongoing** - Featuring works by local artists. Hours: Mon.-Thur., 8:30am-4:30pm & Fri., 8:30am-noon. Contact: Vivian Glover at 803-606-7770 or at (https://orangeburgarts.org/).

Pawleys Island, Litchfield & Murrells Inlet

Brookgreen Gardens, 1931 Brookgreen Garden Drive, US 17, south of Murrells Inlet. **Every Wed.-Sat., from 7-10pm, from Through Aug. 21** - "Summer Light: Art By Night". Beat the heat and enjoy an artistic summer evening at Brookgreen Gardens. Nine lighted installations throughout the Gardens featuring a variety of lighting techniques will let you explore the landscapes, sculpture, and galleries in a new light. These unique displays of light and color are conceived and executed by the talented Brookgreen Gardens team that brings you Nights of a Thousand Candles. **The Rosen Galleries, Through Aug. 22** - "National Sculpture Society 88th Annual Awards Exhibition". The premier annual exhibition of American figurative sculpture returns once again to Brookgreen Gardens. Featuring the work of American masters alongside rising stars, the National Sculpture Society's annual awards exhibition presents the finest in contemporary figurative sculpture. Visitors to Brookgreen Gardens will vote for their favorites to win the People's Choice Award which is announced at the conclusion of the exhibit and the National Sculpture Society gives 15 awards. This exhibition is generously sponsored by Carl G. and Mary G. Colton, Hal and Margaret Holmes, Greg and Cheryl Sprole, Kenneth and Elaine Trousdell, and The Curator's Circle. **The Stanley and Naomi Bleifeld Gallery, Ongoing** - All the works on view in the Bleifeld Gallery are from the collection of Brookgreen Gardens. The gallery showcases the work of historic and contemporary sculptures whose subjects are taken from the natural world. It includes work by Anna Hyatt Huntington, Gertrude Lathrop, Stanley Bleifeld, Grainger McKoy, Sandy Scott, Kent Ullberg, and numerous other prominent sculptors, past and present. The gallery officially opened in February 2017. **Ongoing** - "Lowcountry: Change and Continuity," a major new exhibit, tells the story of human interaction with this land over the centuries. It features wall size photomurals by SC naturalist photographer Tom Blagden, along with a range of artifacts tracing the history of man's occupation of this extraordinary landscape. **General Gardens, Ongoing** - One of the largest collections of outdoor sculpture in America. This preeminent collection of American representational sculpture includes - 560 works by 240 artists - representing such well-known artists as Charles Parks, Daniel Chester French, Carl Milles, August Saint-Gaudens and Anna Hyatt Huntington. Hours: daily, 9:30am-5pm. Admission: Yes. Admission to Brookgreen is good for seven days. Contact: 843/235-6000, 800-849-1931, or at (www.brookgreen.org).

ALTERNATE ART SPACES - Litchfield Gallery at Applewood House of Pancakes, 14361 Ocean Highway, Litchfield Beach. **Ongoing** - features works of accomplished local artists and photographers who are members of the Seacoast Artists Guild of South Carolina dedicated to advancing excellence in the visual arts through teaching, exhibits, workshops, art shows & sales. Hours: daily 6am - 2pm. Contact: at (www.seacoastartistsguild.com).

Pickens

Pickens County Art and Historical Museum, 307 Johnston Street, Pickens. **Through July 23** - "The Big Day," featuring a solo installation created by Susan Lenz of Columbia, SC. This exhibit was created to mark a special occasion: The artist and her husband, Steve Dingman are celebrating their fortieth anniversary later this year! The installation addressing both the joys of marriage and the current socioeconomic pressures facing those currently planning a wedding. Nearly forty donated and found wedding dresses hang along with eleven veils on which crowd-sourced statements of marriage and divorce were machine stitched. The show also includes a circular niche transformed with three mirrors and



Installation by Susan Lenz

a suspended gown that functions as a location for visitors' selfies. Hours: Tue.-Fri., 9am-5pm. Contact: 864/898-5963.

Richburg

Olde English District Visitors Center & Market, 3200 Commerce Drive, Suite A, Richburg. **Ongoing** - This is your one stop shop for finding specialty food products, art (pottery, jewelry, etc.) and many other local, unique items from our region. We also carry a variety of South Carolina souvenirs. Hours: daily, 9am-5pm. Contact: 803/385-6800 or at (www.oldeenglishmarket.com).

Ridgeland

Morris Center for Lowcountry Heritage, 10782 Jacob Smart Blvd. S., on US 17, in a 1937 historic Sinclair Service Station, Ridgeland. **Through July 31** - "Seasons of Daufuskie". On loan from the Columbia Museum of Art, this exhibition features 20 original silver gelatin prints by noted photographer Jeanne Moutoussamy-Ashe. The photographer visited Daufuskie in the late 1970s to capture the people and places that reflected the island's unique identity. In addition to revealing how the island's landmarks appeared almost 50 years ago, the exhibition will show, in contrast, how the same spots look today. **Ongoing** - Morris Center for Lowcountry Heritage hosts exhibitions on local history, art, and culture. We also provide hands-on art workshops throughout the year. Admission: FREE. Hours: Tue.-Fri., 10am-4pm and Sat., 10am-2pm. Contact: 843/284-9227 or at (www.MorrisHeritageCenter.org).

Ridge Spring

Art Association of Ridge Spring Gallery, Art Center in Ridge Spring, located behind the Ridge Spring Civic Center, 108 Maintenance Shop Circle, Ridge Spring. **Ongoing** - The Center contains works in a variety of media by: Ron Buttler, D.S. Owens, Carolyn Boatwright, Betsy Connelly, Kedryn Evans, Jessica Goodman, Melanie Knight, John Zurlo, Donna Minor, Joanne Crouch, Gloria Grizzle, Linda Lake, Gwen Power, Deborah Reeves, Marion Webb, and Barbara Yon. It is also home of the Ridge Quilt Trail. Hours: Fri. & Sat., 10am-2pm or by appt. Contact: 803/685-5577 or e-mail to (artassridgespring@gmail.com).

Rock Hill



Work by Michael Sorrow

Center for the Arts, 121 East Main St., Rock Hill. **Dalton Gallery, Through July 25** - "SUPER-impose," featuring works by Katherine Kesey and Michael Sorrow. A reception will be held on July 15, from 4-7pm. Katherine Kesey and Michael Sorrow present an in-depth examination of the nature of portraiture in an exhibition that highlights the tradition's simultaneous subjectivity and intimacy. Both journalistic and improvisational, this exhibition addresses contemporary portraiture through the lens of young-adulthood, and aims to balance postmodern apathy and cynicism with candid moments of intimacy and spontaneity. A portrait begs to be more than an objective likeness. Fragmented yet immersive, ironic yet sincere, the work conveys connection in

continued on Page 39