

Columbia Museum of Art Offers Works from Its Collection

The Columbia Museum of Art in Columbia, SC, will present the exhibit, *Modern & Contemporary Art from the Collection*, featuring over 30 paintings, drawings, photographs and sculptures, on view in Lipscomb Family Galleries 5 & 6, from Aug. 24 through Jan. 1, 2013.

"Since arriving at the Columbia Museum of Art six months ago, it has been a pleasure discovering the depth and quality of the Museum's collection," chief curator, Will South, said. "The collection is so rich in number that for some time the museum's modern and contemporary holdings have been in storage. For our visitors to have the most diverse and exciting experience possible here at the CMA, some of these greatest hits need to be back out and that's what's happening."

Long-time CMA members will also find old friends on view, including works by Jasper Johns, Howard Thomas, Sally Mann and Edward Ruscha, whose famous image of the Hollywood Hills on view has become a staple of the art world.

"*Modern & Contemporary from the Collection* offers experiences both serious and sensual, designed to both entertain and enlighten," South said.

Among the earliest works of art on view in *Modern & Contemporary Art from the Collection* is Leon Kelly's energetic abstraction influenced by the then-new and radical art movement, Cubism. Kelly's early embrace of Cubism was shared by a small, but enthusiastic number of Americans who were excited about the possibilities opened up by Cubism: objects are always viewed and understood from different angles and over time, so why not include time and space into image-making? Thinking in this way resulted in canvases that were baffling to the public when first made as they showed a flat surface fractured into space that analyzed objects with movement and changeability in mind. Kelly's work is a classic American response to one of the most important art movements and a good starting place for visitors to either revisit Cubism or begin to appreciate it for the first time.

The dramatically large and brightly colored Gene Davis piece is in the same gallery. While early abstraction usually involved a figure or a still life as a point of

departure, by the mid-20th century, artists were well versed in using color and shape alone to express complex ideas and emotions. Davis' imposing canvas is visually scintillating with line after line vying for the mind's attention. The purpose of such painting was not to describe known things such as a cat or a cup or a flaming sunset, but rather to orchestrate color (much as one would orchestrate musical notes, which are completely abstract and no one ever questions that fact) to stimulate a viewer's reactions, reactions that need not (or cannot be) put into words. Artists often say that if they could write about what it was they felt, they would. Instead, they paint it.

As the 20th century moved on, art movements of all kinds emerged, often known as "isms": Cubism, Fauvism, Surrealism, and Abstract Expressionism among them. Lionel Gilbert's sensually compelling *Breakfast Table* is a prime example of how an artist fuses stylistic sources. Here, visitors see glimmers of Cubism in the faceted planes that make up the compote and cups, while the bold and paint-laden brush of Abstract Expressionism is present, too. Touches of arbitrary color speak to the influence of Fauvism. While Gilbert's painting is a visual delight, it is also an object lesson on how artists think: good results often come from the blending of influences that came before us.

Small abstract oils by nationally recognized artist Pat Steir are also on view for the first time. These small, effervescent canvases, in the same vein as the large Gene Davis, exploit the potential of color alone as a path to expression. As opposed to Davis, Steir does not control the shapes and edges of color at all, but rather lets color flow down and around randomly, allowing gravity and chance to play a part in the mark making. The result is a series of fresh, glowing images that the artist arrived at after intense study of color. All of the works by Pat Steir are recent gifts from the nationally-known collectors, Herbert and Dorothy Vogel.

For further information check our SC Institutional Gallery listings, call the Museum at 803/799-2810 or visit (www.columbiamuseum.org).

Anastasia & Friends Offers Benefit for Assessment & Resource Center

Anastasia & Friends in Columbia, SC, will present the exhibit, *Small Art/Big Heart: A Fundraiser for Friends of the ARC*, on view from Aug. 2 - 29, 2012. A reception will be held on Aug. 2, from 6-9pm, part of Columbia's First Thursday on Main event.

Anastasia Chernoff and Paul Kaufmann, in conjunction with some of the region's finest artists, present *Small Art/Big Heart*. This exhibition benefits and promotes

awareness to a non-profit organization for our children and community - Friends of the ARC (Assessment and Resource Center).

For over 20 years, the ARC has been coming to the aid of children who are suspected of being physically and sexually abused. The ARC's multi-disciplinary team includes child psychologists, forensic interviewers, a medical doctor, child life specialists and victim advocates. As one of

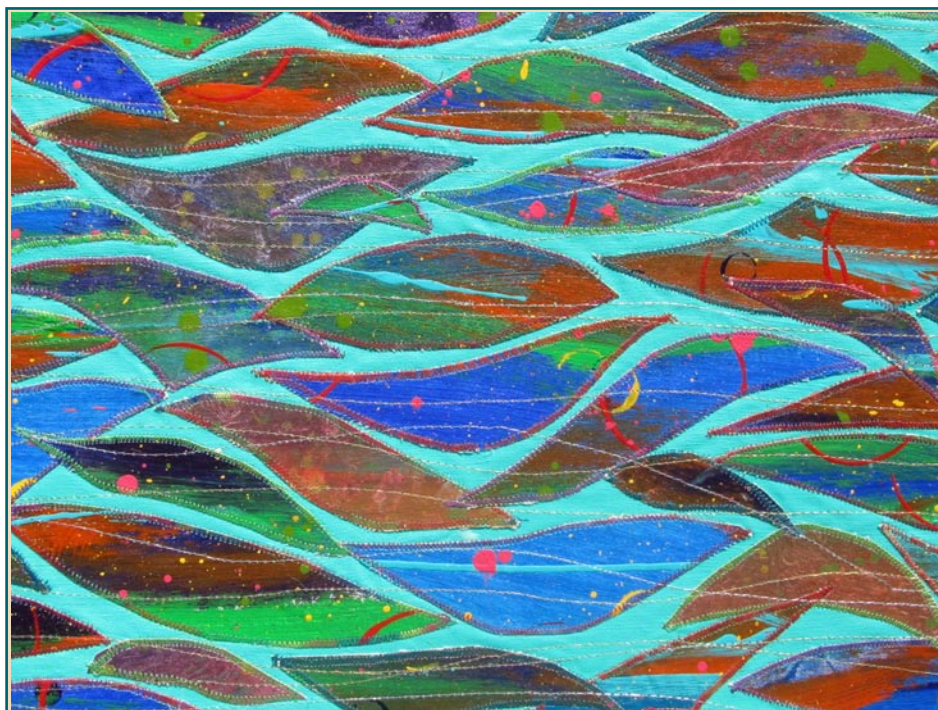
[continued on Page 24](#)



Michel
McNinch

803-360-2994

www.michelmcninch.com
michel@michelmcninch.com



Key West Ocean (detail), by Susan Lenz

Susan Lenz: Sun and Sand

will be on exhibit at

Frame of Mind • 1520 Main Street • Columbia, SC
Hours: Tuesday - Friday 10am-6pm; Saturday 12-4pm

August 2 - 31, 2012

Opening reception: August 2, 6 - 9 pm

Sponsored by:



MOUSE HOUSE, INC.
FRAMES & ANTIQUARIAN PRINTS

2123 Park Street • Columbia, SC 29201 • (803) 254-0842

mouse_house@prodigy.net • <http://mousehouseinc.blogspot.com>

Exquisite handblown glass gallery and studio in the historic downtown vista arts district. Open to the public Mon. thru Sat. Offering unique and affordable blown glass vases, bowls, flowers, indoor and outdoor lighting, zperfume bottles, ringholders, sculpture, ornaments and much, much more. Providing quality, uniqueness, and affordability for 20 years!

Ask about our classes!!



One Eared Cow Glass, Inc.
1001 Huger St. Columbia, SC
803-254-2444 www.oneearedcow.com