

## Discover the Seagrove Potteries

Seagrove is a Community of Working Potters & home to the North Carolina Pottery Center

**You're invited....**

to visit the Seagrove potters at their workshops & studios nestled in the countryside.

Experience a diversity of pottery from contemporary, one-of-a-kind art pottery, to traditional utilitarian forms, & folk art

**It's an Adventure....**

Pick up a free colored map at any of the pottery shops

Seagrove is located in the Center of North Carolina 40 miles south of Greensboro on Hwy. 220 (future I-73, I-74)

[www.discoverseagrove.com](http://www.discoverseagrove.com)

## Eck McCannless Pottery



**Demonstrations available anytime!**

Eck is a second-generation Seagrove potter who has spent nearly 20 years perfecting his craft. He specializes in **Agateware, Crystalline and Stoneware.**

6077 Old US Hwy 220  
Seagrove, NC 27341  
(336) 873-7412

[www.EckMcCannless.webs.com](http://www.EckMcCannless.webs.com)

## Arts Council of Fayetteville/Cumberland County

*continued from Page 12*

Charles Tipton of Fayetteville sees potential in old VHS tapes. He is using hundreds of them, donated by the Salvation Army, to create a unique installation for the exhibition.

Methodist University art professor Peggy Hinson uses mixed-media shadow box constructions with a "Noah's Ark" theme to bring attention to endangered and threatened animal species, combining them with unrelated environmental circumstances.

Carolina Crawford of Durham, NC, also gains inspiration from the environment. A shell from the ocean is ideally shaped for the ears on her delicate masks.

Learn more about these artists and see their work during *Transformation: Artful Recycling*.

The exhibition is sponsored by Pratt Industries, Waste Management and

Wastequip on behalf of the City of Fayetteville's Environmental Services Department. The Arts Council's 2014-15 exhibits are curated by the Ellington-White Community Development Corporation.

The Arts Council of Fayetteville/Cumberland County was founded in 1973. As a link between artists, arts and cultural organizations and the community, the nonprofit agency administers programs in partnership with a variety of local agencies to stimulate community development through the arts. The Arts Council supports individual creativity, cultural preservation, economic development and lifelong learning through the arts.

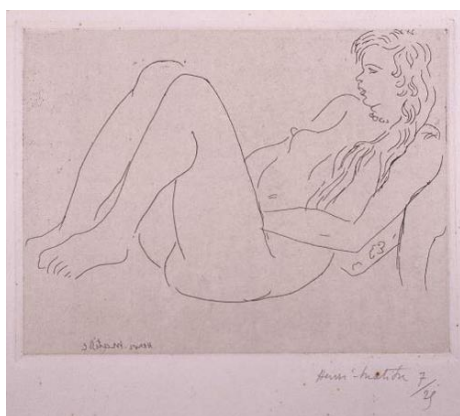
For further information check our NC Institutional Gallery listings, call Mary Kinney at the Council at 910/323-1776, ext. 239 or visit ([www.TheArtsCouncil.com/exhibitsmain.php](http://www.TheArtsCouncil.com/exhibitsmain.php)).

## UNC at Greensboro, NC, Offers Works by Henri Matisse

University of North Carolina at Greensboro, NC, will present *Matisse and His Muses*, featuring prints by Henri Matisse, on view at the Weatherspoon Art Museum, from Aug. 2 through Oct. 26, 2014.

This installation of prints by Henri Matisse, all part of the Etta and Dr. Claribel Cone Collection, will focus on two aspects of the artist's favorite subject: the female form. The first group consists of seated women in interior scenes, many of them in quiet, pensive moods. The second group—depicting odalisques, or reclining nudes—is based on a long tradition in art to which Matisse added his own touch.

Matisse was at his height as a graphic artist when he created these prints. Although he made prints in spurts—in 1906, 1914, and again from 1922-29—his ventures into this medium were not tangential to his art, but rather an integral part of it. By exploring the figure through printmaking, he was able to glean a better understanding of its form. Posed informally and naturalistically, the women convey the immediacy of sketches done with little study. This mistaken perception results from Matisse's talent for simplifying form



Henri Matisse, "Nu au collier et aux cheveux longs (Nude with necklace and long hair)", c. 1920, etching on paper, 5 9/16 x 7 1/4 in. Bequest of Etta and Claribel Cone, 1949.

to its essential elements. His mastery of line and his love of pattern are clearly evident in the prints—as is his preference for certain models.

This exhibition is organized by Elaine D. Gustafson, Curator of Collections.

For further information check our NC Institutional Gallery listings, call the Museum at 336/334-5770 or visit (<http://weatherspoon.uncg.edu/>).

## North Carolina Pottery Center in Seagrove, NC, Offers Exhibit of Face Jugs

The North Carolina Pottery Center in Seagrove, NC, will present *Many Faces: North Carolina's Face Jug Tradition*, on view from Aug. 8 through Oct. 25, 2014. A reception will be held on Aug. 8, from 5:30-7:30pm.

Curated by L.A. Rhyne, a pottery collector who lives in western North Carolina, *Many Faces* explores a fascinating group of 19th and 20th century face vessels made by many traditional and

contemporary folk artists. North Carolina examples are highlighted along with some from other states and countries. Perhaps first initiated in the United States in the 1800s in South Carolina by enslaved African-Americans and potters from the northeastern US, the face jug tradition spread to Georgia, North Carolina, and throughout the South and other regions. *Many Faces* includes many face jug styles

*continued above on next column to the right*

made by a wide range of talented potters. Visit the North Carolina Pottery Center for this exhibition and you will literally come face-to-face with some fascinating pottery.

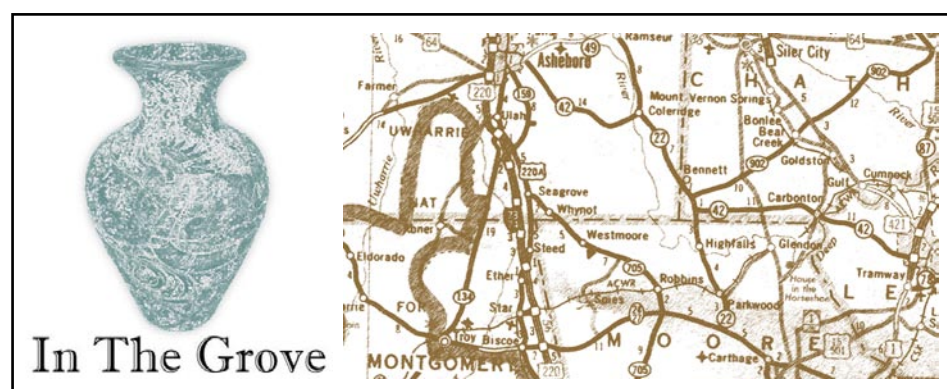
Exhibitions are made possible through the generosity of our membership, the Mary and Elliott Wood Foundation, the Z. Smith Reynolds Foundation, the Windgate Charitable Foundation, and the John W. and Anna H. Hanes Foundation. This project was supported by the NC Arts Council, a division of the Department of Cultural Resources, with funding from the National Endowment for the Arts. Thank you!

The mission of the North Carolina Pottery Center is to promote public awareness of and appreciation for the history, heritage, and ongoing tradition of pottery making in North Carolina.

For further information check our NC Institutional Gallery listings, call 336/873-8430, visit ([www.ncpotterycenter.org](http://www.ncpotterycenter.org)), or find us on Facebook.



Work by Burlon Craig, Wig Stand



by Rhonda McCannless

The Luck Legacy Annual Kiln Opening is Aug. 23, 2014, from 9am to 3pm. This will be the 16th opening in which potter Sid Luck invites his past and present apprentices to participate. The ground-hog kiln will be opened at 10am. Pots can be purchased directly from the kiln.

Bluegrass music will be performed by Southern Magnolia. Barbecue and drinks will be served. This is a free event and open to the public.

Luck's Ware is located at 1604 Adams Road in Seagrove. For more information, visit ([www.lucksware.com](http://www.lucksware.com)) or call 336/879-3261.



Scene from last year's Invitational

Many Seagrove potters will participate in the Mint Museum Potters Market Invitational, Sept. 6, 2014, from 10am to 4pm. Admission is \$10. Potters from across North Carolina are selected to showcase their wares. Traditional functional wares to contemporary sculptural work will be featured.

There will be pottery making demonstrations, live music and food.

The invitational takes place in the Mint Museum Randolph, located at 2730 Ran-

dolph Road in Charlotte, NC. For more information, visit ([www.mintmuseum.org](http://www.mintmuseum.org)) or call 704/337-2000.



Scene from previous Hot Glass Cold Beer event

Also coming in September, STARworks will start Hot Glass Cold Beer nights after the summer hiatus. HGCB is on the second Thursday of each month, from 5:30 to 7:30pm. The first event is Sept. 11, 2014.

The public is invited to come watch a free hot glass demonstration. Visitors who are 21 and older can purchase a hand-blown STARworks glass and receive complimentary beer throughout the evening. Beer on tap will be from North Carolina breweries.

STARworks is located seven miles south of Seagrove at 100 Russell Drive in Star, NC. For more information, visit ([www.STARworksNC.org](http://www.STARworksNC.org)) or call 910/428-9001. Rhonda McCannless is editor and publisher of *In the Grove*, a monthly newsletter about Seagrove, NC, that focuses on pottery news. Click the link to see the latest issue. Rhonda works full-time for Central Park NC in Star, NC, and can sometimes be found at her husband's pottery shop, Eck McCannless Pot-

*continued on Page 14*