

NC Commercial Galleries

continued from Page 71

and contemporary fiber art. Hours: Mon.-Sat., 10am-5pm (call first). Contact: 336/879-9090 or at (www.caldwellhohl.com).

Callicutt Pottery, 5137 Seagrove Plank Rd., Seagrove. **Ongoing** - Featuring a good selection of functional stoneware in many colors including brown, black and white, green and burgundy, green and gold, black and burgundy and yellow by Gary Callicutt. Hours: Mon.-Sat., 10am-5pm. Contact: 336/873-7898 or e-mail at (gary51@rtelco.net).

Carolina Crockery Gallery, 326 Adams Road, (Just off of Hwy 705 between Whynot and Westmoore, or take Steeds Road exit from Hwy 73/74 or Hwy 220 and head towards Seagrove, just down the road from Sid Lucks!) Seagrove. **Ongoing** - The gallery is a multi-media gallery, offering handmade pottery from Morgan Hatfield of Hatfield Pottery, Levi Mahan, and assorted potters from the area. We also carry wood art pieces including cutting boards and custom furniture from Joel Tucker of Southern Wood Creations. We have hand-blown glass from Nicuzzie Glass Designs (Nick Fruin and Suzanne Ririe), jewelry and fiber pieces from The Fuchsia Flamingo. Hours: Tue.-Fri., 2-5pm; Sat., 10am-5pm & Sun., noon to 5pm. Contact: 336/879-2426 or at (www.carolinacrockery.com).

Chad Brown Pottery, 2719 US 220 N., Seagrove. **Ongoing** - Featuring high fired stoneware, decorative and functional with ash and alkaline glazes, by Chad Brown. Hours: Mon.-Sat., 10am-5pm. Contact: 910/571-1691 or e-mail at (chadcameronbrown@yahoo.com).

Chris Luther Pottery, 4823 Busbee Rd., Seagrove. **Ongoing** - Featuring contemporary and functional pottery by Chris Luther, a 4th generation potter of Seagrove's Chriscoe pottery family. Hours: Tue.-Sat., 10am-5pm. Contact: 336/301-3254 or at (www.chrislutherpottery.com).

Chrisco Pottery, 1360 Hwy. 705, Seagrove. **Ongoing** - Featuring functional pottery including tableware, vases, and large platters. Hours: Mon.-Sat., 10am-5pm (Sept.-Dec.) & Tue.-Sat., 10am-5pm (Jan.-Aug.). Contact: 336/879-5272.

Cross Creek Pottery, 481 King Rd., Seagrove. **Ongoing** - Featuring decorative and functional pottery by Terry and Vivian Hunt. Hours: Mon.-Sat., 8am-5pm & Sun., 1-5pm. Contact: 336/873-8425 or at (www.crosscreekpottery.com).

Crystal King Pottery, 2475 Hwy. 705, Seagrove. **Ongoing** - Featuring functional and decorative stoneware by Seagrove native and family-taught potter Crystal King. Face jugs, salt glazes, and folk art. Hours: Tue.-Sat., 10am-5pm. Contact: 336/879-6990 or at (www.CrystalKingPottery.net).

Daniel Johnston Pottery, 6265 Sugg Drive, Seagrove. **Ongoing** - Featuring pottery by Daniel Johnston. Hours: special events or by appt. Contact: 336/963-4845 or e-mail to (daniel@danieljohnstonpottery.com).

Dean and Martin Pottery, 7739 Nathan Lane, Seagrove. **Ongoing** - Jeff Dean and Stephanie Martin make contemporary, vibrantly glazed stoneware vessels, sculpture, and wall pieces. Hours: Tue.-Sat., 10am-5pm & Mon. by chance. Contact: 336/879-0683 or at (www.deanandmartinpottery.com).

Dirt Works Pottery, 1226 Hwy. 705, Seagrove. **Ongoing** - Featuring contemporary, sculptural and functional pottery; Raku, stoneware, wood-fired and salt glazed by Dan Triece. Hours: Mon.-Sat., 9:30am-5pm. Contact: 336/873-8979 or at (www.dirtworkspottery.com).

Dixieland Pottery, 1162 Cagle Loop Rd., Seagrove. **Ongoing** - Hand-turned functional stoneware, colorful glazes to plain earth tones. Specialize in dinnerware, face jugs, etc. Hours: Mon.-Sat., 9:30am-5pm. Contact: 336/873-8463.

Donna Craven Pottery, 2616 Old Cox Rd., Asheboro. **Ongoing** - Featuring wood-fired salt-glazed, mostly traditional with some decorative and contemporary forms by Donna Craven. Hours: by appt. only. Contact: 336/629-8173.

Donna's Pottery Haven, 3432 Brower Mill Road, Seagrove. **Ongoing** - Featuring work by Donna Hertzog. Hours: Mon.-Sat., 10am-5pm. Contact: 336-879-4776 or e-mail to (hertzog63@gmail.com).

Dover Pottery, 634 NC Hwy. 705, Seagrove. **Ongoing** - Featuring a variety of colored crystalline ware, freehand-decorated majolica, and raku by Milly, Fiva, and Zeke McCanness, but we also carry ceramic work by Allen McCanness and Stephen Baxter and quilts by Scott Murkin. Hours: Tue.-Sat., 11am-5pm. Contact: 336/879-3610 or at (Doverpotteryseagrove.com).

Down To Earth Pottery, 11792 Hwy. 24/27, Carthage. **Ongoing** - Featuring utilitarian and decorative pieces by Jim, Nick & Mary Havner. Hours: Mon.-Sat., 10am-5pm. Contact: 910/948-2619.



Work by Eck McCanness

Eck McCanness Pottery, 6077 Old US Hwy. 220, Seagrove. **Ongoing** - The pottery will sell crystalline works made by this second-generation Seagrove potter but, the main focus will be on agateware, which is made by turning several different colors of clay at one time. Hours: Tue.-Sat., 10am-5pm or by appt. and open all Mon. Holidays. Contact: 336/964-4206 or at (eckmccannesspottery.com).

The English Potter, 825 Hwy. 705 S., Seagrove. **Ongoing** - Featuring hand thrown porcelain and stoneware pottery by Robert Saxby. Fine stoneware glazes range from copper red to tenmoku. Hours: Mon.-Sat., 10a-5pm & Sun., noon-4pm. Contact: 336/879-1352 or at (www.english-potter.com).

Fat Beagle Pottery, 719 Potter's Way Rd., Seagrove. **Ongoing** - Featuring wheel-turned, gas-fired, functional and contemporary stoneware. Also features uniquely stunning, pit-fired vases. Hours: Tue., Thur. Fri., Sat., 9:30am-5pm. Contact: 336/953-0608 or e-mail at (fatbeaglepottery@hughes.net).

Fiber and Fire Gallery, 253 E Main Street, Seagrove. **Ongoing** - A gallery of wearable fiber art by Kathy Fernandez. "Sewing has been a part of my life since I was a child. Successful sewing includes the ability to "see" how fabric and design complement one another." Hours: call for hours. Contact: 336/872-4007 or at (www.fiberandfire.net).

Fireshadow Pottery, 244 Falls Dr., Eagle Springs. **Ongoing** - Featuring one-of-a-kind "primitive elegant" ceramic art. Hours: Tue.-Sat., 10am-5pm. Contact: 910/673-8317 or at (www.fireshadow.com).



Works from Frank Neef Pottery

Frank Neef Pottery, 258 East Main Street, Seagrove. **Ongoing** - Featuring decorative and functional porcelain, elaborate cut out designs, with crystalline and celadon glazes. Hours: Tue.-Sat., 10am-5pm & Sun. noon-5pm. Contact: 336/872-4013 or at (www.potteryby-frankneef.com).

Freeman Pottery, 1147 McDuffie Rd., Eagle Springs. **Ongoing** - Featuring hand-turned miniatures 1/2 to 2 inches, functional ware decorated with farm scenes and vessel puzzles. Hours: Tue.-Sat., 9am-5pm. Contact: 910/673-2044 or e-mail at (bfoushee@triad.rr.com).

From The Ground Up Pottery, 172 Crestwood Rd., Seagrove. **Ongoing** - Featuring handmade pottery by Michael Mahan and his two children, Chelsea and Levi. Tree platters, meditation bells, dinnerware, and southwestern

glaze. Contemporary and traditional forms. Hours: Mon.-Sat., 9am-5pm (call ahead). Contact: 910/464-6228 or at (www.fromthegrounduppots.com).

Graham Chriscoe Pottery, 2719 220 N., Seagrove. **Ongoing** - Functional hand-thrown pottery using glazes of white, brown, burgundy, cobalt blue, teal blue, red and Christmas green. Hours: Mon.-Sat., 9am-5pm. Contact: 910/428-4536.

Great White Oak Gallery, 437 N. Broad St., Seagrove. **Ongoing** - Featuring functional thrown forms and hand-built pottery by Benjamin Burns and Bonnie Burns. Exquisitely glazed and hand decorated with rare unusual glazes and hand-painted motifs. Hours: daily 9am-5pm. Contact: 336/873-8066 or at (www.greatwhiteoakgallery.com).

Hatfield Pottery, 187 Atkinson Farm Rd., Seagrove. **Ongoing** - Featuring functional and whimsical art deco, as well as folk styles of hand turned pottery by Morgan Hatfield. Hours: Tue.-Sat., 10am-5pm. Contact: 336/879-8458.

Hickory Hill Pottery, 4539 Busbee Rd., Seagrove. **Ongoing** - Featuring traditional shapes of the area, stoneware that is functional and beautiful. Hours: Mon.-Sat., 9am-5pm. Contact: 910/464-3166.

His Hands Pottery, 7029 New Center Church Rd., Seagrove. **Ongoing** - Featuring functional, decorative, folk art, and Biblical pieces by Jeanette Lowdermilk. Hours: Tue.-Sat., 10am-5pm (closed Jan.-Mar.). Contact: 336/879-5866 or e-mail at (rlowdermilk@rtmc.net).

Humble Mill Pottery, 121 N Broad St., Seagrove. **Ongoing** - Featuring classical and traditional stoneware influenced by 2 years of work in Japan by Charlotte Wooten. Hours: Tue.-Sat., 10am-5pm. Contact: 336/873-7145 or at (www.humblemillpottery.com).

JLK Jewelry at Jugtown, 330 Jugtown Rd., Seagrove. **Ongoing** - Jennie Lorette Keatts takes clay to a different level! She hand makes pottery cabochons and sets them in sterling silver or 14K and 18K gold, copper, brass and semi-precious stones. Hours: Tue.-Sat., 8:30am-5pm. Contact: 910/464-2653 or at (www.jlkjewelry.com).

Johnston and Gentithes Art Pottery, 741 Fork Creek Mill Road, Whynot. **Ongoing** - Featuring traditional and contemporary museum-quality pottery and sculpture by Fred Johnston and Carol Gentithes. Hours: Mon.-Sat., 10am-5pm (call first). Contact: 336/873-9176 or at (www.johnstonandgentithes.com).

Jugtown Pottery, 330 Jugtown Rd., Seagrove. **Ongoing** - Celebrating 100 years of operation. Featuring handmade wood and gas-fired dinnerware, vases and jars by Vernon Owens, Pam Owens and Travis Owens. Hours: Tue.-Sat., 8:30am-5pm. Contact: 910/464-3266 or at (www.jugtownware.com).

Keith Martindale Pottery, Boyd Dr., Seagrove. **Ongoing** - Featuring functional and decorative pottery with a new red glaze and an ocean glaze by Keith Martindale. Hours: Mon.-Sat., 10am-3pm & Sun. 1-5pm (closed Jan.-Mar.). Contact: 336/302-3571 or at (www.keithmartindalepottery.com).

King's Pottery, 4905 Reeder Rd., Seagrove. **Ongoing** - Hand-turned traditional stoneware. Wood-fired salt glaze. Folk pottery, face jugs, and more. Hours: Mon.-Sat., 9am-5pm. Contact: 336/381-3090 or at (www.kingspottery.com).

Kovack Pottery, 1298 Fork Creek Mill Rd., Seagrove. **Ongoing** - Featuring hand-turned, hand-painted, lead-free functional stoneware and wood-fired, salt-glazed pottery by Craig Kovack and Michelle Kovack. Hours: Mon.-Sat., 9am-5pm & Sun., noon-5pm. Contact: 336/873-8727 or at (www.geocities.com/kovackpottery/).

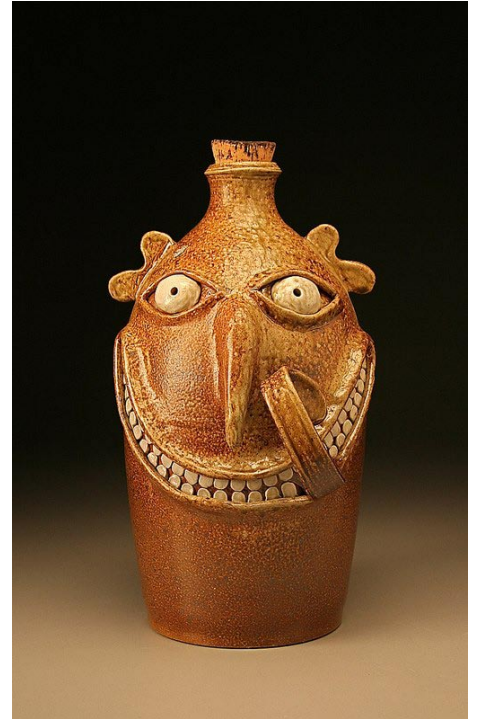
Lantern Hill Pottery, 110 East Avenue, Seagrove. **Ongoing** - We focus on making our pottery that is not only hand-crafted and an enjoyment to use, but also beautiful in their own form of art to be seen and held by all. Hours: Mon.-Sat., 10am-5pm & Sun. 11am-5pm. Contact: 336-873-8222 or at (www.lanternhillpottery.com).

Latham's Pottery, 7297 US Hwy 220 S., Seagrove. **Ongoing** - Featuring functional and traditional stoneware by Bruce and Janice Latham. Hours: Mon.-Sat., 9am-5pm. Contact: 336/873-7303 or e-mail at (lathamspottery@embarqmail.com).

Levi Mahan Pottery, 1423 NC Hwy. 705, Seagrove. **Ongoing** - Wood-fired pottery made from local materials. Seasonal kiln openings. Hours: by appt. only. Contact: 336/480-7808 or

at (www.LeviMahan.com).

Lovin Hills Pottery, 564 Loving Hill Rd., Candor. **Ongoing** - Featuring hand-thrown functional and decorative pieces. Known for hand carved pottery. Hours: Tue.-Sat., 10am-5pm (closed Jan.-Mar.). Contact: 910/974-7787 or e-mail at (lhpotttery@connectnc.net).



Work from Luck's Ware

Luck's Ware, 1606 Adams Rd., Seagrove. **Ongoing** - Traditional, utilitarian pottery forms in a wide range of colors including Sid Luck's "CRAWDAD" slip. Salt-glazed stoneware from wood-fired groundhog kiln. Pottery turned by son Matt, a 6th generation potter, also available. Hours: Mon.-Sat., 9am-5pm. Contact: 336/879-3261 or e-mail at (lucksware@rtmc.net).

Lufkin Pottery, 7437 Hwy 220 S., Asheboro. **Ongoing** - Featuring jewel tone glazes and specialize in kitchenware and functional pieces by Sally Lufkin Saylor. Hours: Mon.-Sat., 9:30am-5pm (closed Wed.). Contact: 336/873-8764 or e-mail at (sallythepotter@aol.com).

Macon A Mess Pottery, 213 East Main Street, Seagrove. **Ongoing** - Featuring works by Breanna Macon. Hours: Wed.-Sat., 10am-4pm. Contact: 336/953-3927.

Maness Pottery, 10995 Hwy. 24/27, Carthage. **Ongoing** - Featuring functional and decorative pieces in all colors except red by Clyde Maness. Hours: Mon.-Sat., 8am-6pm & Sun., 1-5pm. Contact: 910/948-4897.

MasterWorks, 246 East Ave., Seagrove. **Ongoing** - Featuring antique, traditional, and contemporary pottery. Hours: Mon.-Sat., 9am-5pm. Contact: 336/873-7779.

Matthew Kelly Pottery, 4818 Seagrove Plank Road, Asheboro. **Ongoing** - Decorative and functional handmade stoneware by Matthew & Danielle Kelly. Wood-fired salt glazes, meticulous slip work, on dinnerware, ornaments, and jewelry. Hours: by appt. only. Contact: 919/244-7445 or e-mail at (matthewkellypottery@gmail.com).

McCanness Pottery, 634 NC Hwy 705, Seagrove. **Ongoing** - Featuring Zinc Silicate crystalline glazes by Will McCanness. Also featuring wood-fired pottery by David Stuemppfle and Daniel Johnston. Hours: daily 10am-5pm. Contact: 336/879-3610 or at (www.mccannesspottery.com).

McKay Pottery, 2596 Pottery Rd., Seagrove. **Ongoing** - Featuring traditional shape including face jugs and Aladdin teapots. Hours: Tue.-Sat., 10am-5pm. Contact: 336/879-4255.

McNeills Pottery, 1208 Upper Rd., Seagrove. **Ongoing** - Featuring hand-built one-of-a-kind designs in porcelain and stoneware by Judy McNeill. Hours: Tue.-Sat., 9am-5pm. Contact: 336 879-3002.

Michele Hastings & Jeff Brown Pottery, 505 E Main Street, Seagrove. **Ongoing** - Featuring works by Michele Hastings and Jeff Brown. Hours: Mon., Tues., Thur., Fri., Sat., 10am-5pm and Sun. noon-5pm. Contact: 336/873-1001 or at (www.gypsypotters.com).

Moore Pots Pottery, 333 Jugtown Rd., Seagrove. **Ongoing** - Featuring traditional and folk art pottery; candlesticks, Rebekah pitchers, and chickens; wood fired salt glazed. Hours: Mon.-Sat. 10am-5pm. Contact: 910/464-1453.

Nicholas Havner Pottery, 1576 Leaman Road, Robbins. **Ongoing** - Featuring works by Nick Havner. Hours: by appt. only. Contact:

continued on Page 73