

North Carolina State University in Raleigh, NC, Offers Works by Alan Cohen

North Carolina State University in Raleigh, NC, is presenting the exhibit, *Earth with Meaning*, featuring photographs by Alan Cohen, on view at the Gregg Museum of Art & Design through Dec. 17, 2011.

After completing a degree in nuclear engineering at NC State and studying thermodynamics at Northwestern, Cohen pursued a career in photography instead.



Berlin Wall path, 1996, by Alan Cohen

As a graduate student at the Illinois Institute of Technology's Institute of Design, Cohen studied with some of the masters of photography. He was awarded a M.Sc. Photography degree in 1972.

"At the Institute of Design, I learned the medium's multiple languages under the tutelage of Aaron Siskind, Arthur Siegel, Garry Winogrand, Joe Jachna, Ken Josephson and Charles Swedlund. Since that time, the possibilities of what a photograph can address and what it can mean have profoundly changed," said Cohen. "For the last two decades my pictures have addressed the shared issues reflective of cold war history, cultural meanings, and personal belief."

"Since 1991, I have traveled to places anchored to events - some repulsive and some illuminating - in 55 countries and 43 US states that symbolize the sinuous life of world history."

Concentrating on places where the fragmentary physical remnants of historical and natural events are still visible - like vestiges of the Berlin Wall, remains of Holocaust sites, boundary lines, meteor impact craters, ruins of fortresses, abandoned colonial buildings - Cohen has documented "the earth of our past as a record of memory, not as an act of witness." *Earth with Meaning* presents a major retrospective of Cohen's starkly moving work, filling both of the

Gregg's main galleries with carefully composed images revealing the scars of history.

Cohen offers the following statement about his photography, "I have come to understand that history, in a contemporary image, can be sited. Events can - and do - become geography. My photographs are a visual meditation on the trauma that scars global sites of the nineteenth, twentieth and twenty-first-centuries. The images record the distance between what we remember about charged places and what we can still observe in them today. The photographs offer a space for reflection on the complex gravity and legacy of the very ground in which history is rooted."

Married to Susan Walsh, Cohen lives in Chicago, IL, and is an Adjunct Full Professor in the Art History, Theory, Criticism Department at the School of the Art Institute of Chicago and a member of the visiting faculty at Columbia College Chicago's Department Of Photography.



The Equator at Mitad del Mundo, Ecuador, 1999, by Alan Cohen

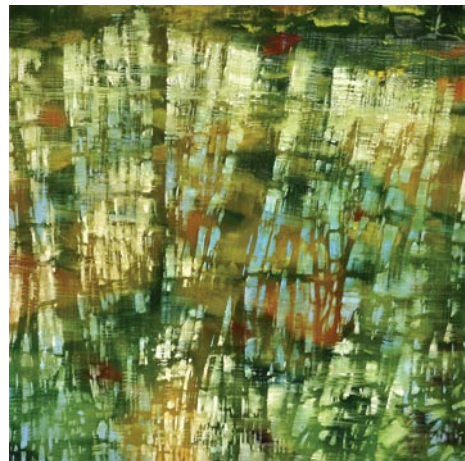
This project was supported by the NC Arts Council, a division of the Department of Cultural Resources. It was also made possible through the generous contributions of Susan Annable, Bruce Brittain, Robert Burger, Sharon Cohen, Grace Drease, Annie and Lewis Kostiner, Bruce Mackh, Sandro Miller, Ann Rothschild, David C. and Sarajejan Ruttenberg Arts Foundation, Jonathan Walsh, Susan Walsh and Vanessa Wilcox.

On Nov. 17, 2011, at 6pm, Alan Cohen returns to the Gregg to talk about his starkly beautiful black and white photographs in *Earth with Meaning*.

For further information check our NC Institutional Gallery listings, call the Museum at 919/515-3503 or visit (www.ncsu.edu/arts).

Adam Cave Fine Art in Raleigh, NC, Features Works by David Dunlop and Cathryn Miles

Adam Cave Fine Art in Raleigh, NC, will present the exhibit, *New Terrain*, featuring oils on aluminum and canvas by David Dunlop and Cathryn Miles, on view from Oct. 6 - 31, 2011. A reception will be held on Oct. 7, from 6-9pm.



Work by David Dunlop

From energetic patterns of leaves on the surface of a pond, to distant trees silhouetted against a misty field, two painters share their light-filled visions. David Dunlop, from the Northeast, and Southerner Cathryn Miles have each built careers incorporating painting and teaching but the works of art in

this show, titled "New Terrain" are a study in contrasts.

Dunlop paints scenes ranging from quiet riverbanks and deep woods to busy urban centers such as Grand Central Station, filled with brushy, abstracted figures. Drawing on techniques from the Classical Renaissance as well as modern science, the artist chooses to paint in oils on aluminum and copper panels. The resulting works are energetic and full of translucency.

Dunlop is a passionate student of artistic techniques, science and aesthetics throughout art history and has not only pulled this knowledge into his own work but found numerous ways to teach others about different periods in art. He has won an Emmy for writing and hosting the 13-episode PBS series *Landscapes through Time* and he routinely takes groups to Europe and Japan for painting seminars. He has lectured on art at the Metropolitan Museum of Art and been featured in the New York Times. Dunlop attended the College of Wooster and has an MFA from Pratt Institute. He lives in Connecticut where he is on the faculty of the Silvermine School of Art in New Canaan.

Whereas Dunlop paints en plein air or from photographs, Cathryn Miles paints her landscapes from memory, creating oils

continued above on next column to the right

on canvas full of mood and emotion and a deep sense of the artist's character. The works often feature hazy, muted landscapes that remind one of early mornings in remote parts of the South before the sun has fully risen to burn off the fog.

Like Dunlop, Miles is also a student of art history and sites many different influences from the German Expressionists to the Bay Area Figurative artists. Asian and Mexican art has lead her to create medita-

tive paintings more about symbolism and less about specific places. She has an MFA from the University of Houston and is on the art faculty at Kennesaw State University in Georgia where she teaches Design and Color Theory amongst other subjects.

For further information check our NC Commercial Gallery listings, call the gallery at 919/272-5958 or visit (www.adamcavefineart.com).

Artspace in Raleigh, NC, Offers Works by Eric McRay and Mary Ann Anderson

Artspace in Raleigh, NC, will present two new exhibits including: *Purely Abstract*, featuring works by Eric McRay, on view in the Lobby Gallery from Oct. 7 - 29, 2011 and *Coming and Going*, featuring works by Mary Ann Anderson, on view in the Upfront Gallery from Oct. 7 - 29, 2011. A reception for both exhibits will be held on Oct. 7, from 6-10pm.

In this body of work, Eric McRay has used non-objective abstraction in the tradition of the New York School of the 1940s and 1950s. His focus is on subjective emotional expression with a particular emphasis on spontaneous creative actions to create this body of work.



Work by Eric McRay

McRay received a BFA degree at the Maryland Institute, College of Art, where he earned a four-year scholarship for his artistic talent. He is an Artspace resident artist and currently serves as the Co-President of the Artspace Artists Association, as well as on the Artspace Board of Directors.

Some of McRay's collectors include NCCU Art Museum, African-American Cultural Center - NCSU, American Tobacco Campus, Duke Raleigh Hospital, Duke Eye Center of Raleigh, Capitol Broadcasting, Duke University Medical Center, NC State University, SAS Institute, UNC - Chapel Hill, and Western Wake Hospital, as well as many private collectors locally, nationally and internationally.

Mary Ann Anderson views Artspace's Upfront Gallery as a passageway for visi-

tors through the art center. In this way, Anderson considers the gallery a metaphor for our coming and going through life. "This passage can inspire our contemplation of that fleeting moment that we experience as a lifetime." Anderson's biomorphic forms dwell in the passage. They are vessels for the life force which inhabits all living beings. Anderson's exhibition is also informed by Eastern philosophy and Asian art. In this body of work, acrylic paint and graphite are applied to synthetic paper (Yupo).

Shades of black and gray are made by rubbing a stick of graphite on the paper with woodblock and linocut printing plates underneath. The surface is then permanently sealed by brushing acrylic varnish over the graphite, creating a patina. Anderson notes that the principle composition element is pattern, as she weaves rhythm and movement into her work.

Anderson has exhibited her work extensively at galleries in Illinois for 20 years before moving to Chapel Hill, NC in 2008. This year she presented solo exhibits in NC at The Arts Center in Carrboro and at the Durham Art Guild. Her art studies include classes at Ox-Bow, a program of the School of the Art Institute of Chicago, and Penland School of Craft. Her university course work includes classes in art history and philosophy.

Artspace, a thriving visual art center located in downtown Raleigh, brings the creative process to life through inspiring and engaging education and community outreach programming, a dynamic environment of over 30 professional artists studios, and nationally acclaimed exhibitions. Approximately 95 artists hold professional memberships in the Artspace Artists Association. Thirty-five of these artists have studios located at Artspace. Artspace is located in Historic City Market in Raleigh at the corner of Blount and Davie Streets.

Artspace is supported by the North Carolina Arts Council, the United Arts Council of Raleigh and Wake County, the Raleigh Arts Commission, individuals, corporations, and private foundations.

For further info check our NC Institutional Gallery listings, call the center at 919/821-2787 or visit (www.artspacenc.org).

The Durham Arts Council Features Works by Matt Micca, Laura Azar, Shelly Hehenberger, and Artie Dixon

The Durham Arts Council in Durham, NC, is presenting several new exhibits including: *Ballpoint Abstractions*, featuring works by Matt Micca in the Allenton Gallery; *New Paintings by Laura Azar*, on view in the Semans Gallery; and *Chaos & Cosmos*, featuring work by Shelly Hehenberger, also on view in the Semans Gallery. All three exhibit will be on view through Nov. 30, 2011 and a reception for all three will be held on Oct. 21, from 5-7pm.

The series *Ballpoint Abstractions* melds minimalist aesthetic with primal mark-making. Matt Micca describes his delicate textural drawings as visual reflections on natural processes. Micca received his BFA from William Patterson University of New Jersey and currently lives in Greensboro, NC.

Laura Azar's *New Paintings* blend figurative and abstract elements with a lyrical focus on line quality. Beginning as visceral personal stories, she constructs, destroys and reconstructs her paintings

into expressions of universal themes. Azar studied painting at the University of North Carolina at Chapel Hill and has continued to paint in Chapel Hill for over 20 years.



Work by Matt Micca

Chaos & Cosmos, a collection of tactile mixed media paintings, frames

continued on Page 43