

NC Institutional Galleries

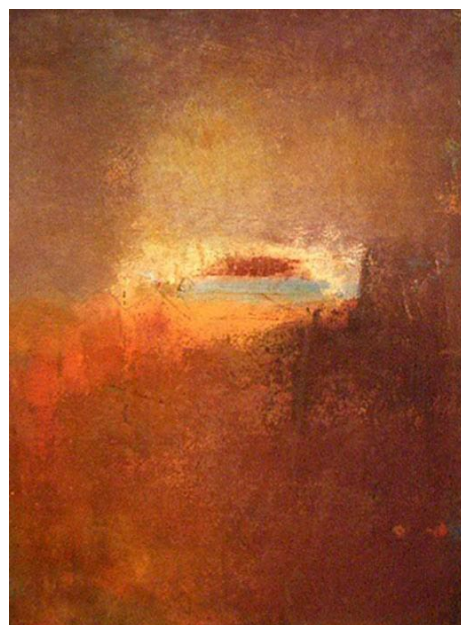
continued from Page 57

nual Spruce Pine Potters Market". The event includes thirty-two artists: Stanley Mace Andersen, William Baker, Barking Spider Pottery, Pam Brewer, John Britt, Cynthia Bringle, Melissa Cadell, Cristina Cordova, Claudia Dunaway, Susan Feagin, Terry Gess, Becky Gray, Michael Hunt and Naomi Dalglish, Shawn Ireland, Lisa Joerling, Nicholas Joerling, Michael Kline, Suze Lindsay, Shaunna Lyons, Jeannine Marchand, Courtney Martin, Kent McLaughlin, Teresa Pietsch, David Ross, Michael Rutkowski, Ken Sedberry, Ron Slagle, Gertrude Graham Smith, Liz Zlot Summerfield, Valerie Schnauffer and Joy Tanner. Admission to the Market is free, but visitors are encouraged to purchase raffle tickets for work donated by four of the artists. This year, those artists are Kent McLaughlin, Jeannine Marchand, David Ross and Ken Sedberry. A portion of the raffle proceeds will benefit Safe Place, a non-profit organization working for the prevention of domestic and sexual violence. Food will be available for purchase from FRESH Wood Fired Pizza, making custom pizza on site from a pizza oven on the back of a pickup truck. For more information, visit the SPPM website at (www.sprucepinepottersmarket.com) or their Facebook page; e-mail them at (info@sprucepinepottersmarket.com), or call 828/765-2670.

Sylva

Gallery One, Main Street, Sylva. **Ongoing** - Home of the Jackson County Visual Arts Association. The association has also offered workshops: including utilizing social media, book binding, drawing and art history. Exhibitions usually include paintings, photographs, sculptures and occasionally contemporary crafts. Hours: Mon.-Fri., 1pm-4pm and by appt. Contact: Tim Lewis 828/337-3468 or James Smythe 828/507-4248.

Tryon



Work by Carol Beth Icard

Throughout Tryon, Saluda, Columbus, in NC, and Landrum, SC, Oct. 1, from noon-5pm - "Art Trek Weekend in The Foothills". Upstairs Artspace will open their ninth annual two-day annual tour of local Polk County and Landrum artists and craftsman studios. The gallery exhibit, including a silent auction, will remain open during these same times on Saturday and Sunday. The show will be up for two weeks with a closing reception for final bidding on the silent Auction on Friday, Oct. 13. Bidding will end at 6pm. Participating in this year's Art Trek are artists; Bonnie Bardos, Carri Bass, Margaret Curtis, Robert Clark, Margaret Davis, David Edgar, Lynda Evans, Ann Gleason, Diana Gurri, Lori Heckelman, Martine House, Carol Beth Icard, Marie King, Christine Mariotti, Bob Neely, BJ Precourt, Becky Rickenbaker, Keith Spencer, Vicki Van Vynckt, Doc Welty, Toby Wolter and David Zacharias. Maps to the studios will be available at local businesses and other arts organizations in Tryon, Saluda, Columbus, and Landrum after Labor Day. They will be available at Upstairs as well. Check your map and our website at (www.upstairsartspace.org) for the list and look for the orange signs on your travels and stop in for a visit!

Tryon Arts and Crafts School, 373 Harmon Field Rd., in the old Tryon Middle School, Tryon. **Through Oct. 31** - "Encore: The Black & White Show". A reception will be held on Oct. 31, from 7-9pm, where people will be reading winning ghost stories from our "The Apparitionist" National Ghost Story Competition. **Gallery & Gift Shop, Ongoing** - Gift Shop features juried works by regional artisans to selected work produced by our instructors and students. Hours: Mon.-Fri., 9am-5pm & Sat. 9am -1pm. Contact: 828/859-8323 or at (www.tryonart-

sandcrafts.org).

Upstairs Artspace, 49 South Trade Street, Tryon. **Oct. 21 - Dec. 1** - "I Can't Believe You Ate My Doughnut"; "FLORA, FAUNA & FIGURES"; and "KING SNAKE PRESS PRINTS, 1998 - 2017". A Walk & Talk and reception will be held on Oct. 28, with the Walk & Talk beginning at 5pm followed by the Reception at 6pm. Hours: Tue.-Sat., 11am-5pm. Contact: 828-859-2828 or at (www.upstairsartspace.org).

Valdese

Valdese Heritage Arts Center, 146 Main Street West, Valdese. **Ongoing** - The center offers a great selection of unique gifts on exhibit and for sale, including, but not limited to original paintings, pottery, needlework, wood-carvings, hand crafted furniture, ceramic sculptures, stained glass, photography, jewelry, floral arrangements greeting cards, quilts and home made soap. Hours: Mon.-Fri., 9am-5pm & Sat., 11am-3pm. Contact: 828/874-1849 or at (<http://vhac.webs.com>).

Washington

River Walk Gallery and Arts Center, 139 W. Main Street, Washington. **Ongoing** - All work is done by local artists and has to be juried into the gallery. The gallery includes watercolor, oil, and acrylic paintings, photography, pottery, mixed media, fiber arts, jewelry, wood work, stained glass, and books written by local authors. Hours: Mon.-Sat., 10:30am-5pm. Contact: 252/974-0400.

Waynesville

Little Gallery on Church Street, 37 Church Street, Waynesville. **Ongoing** - Featuring monthly exhibits by regional arts. Sponsored by the Haywood County Arts Council. Hours: Mon.-Fri., 9am-5pm. Contact: 828/452-0593, e-mail at (info@haywoodarts.org) or at (www.haywoodarts.org).

The Haywood County Arts Council's Gallery 86, 86 N. Main Street, Waynesville. **Ongoing** - The gallery lends itself to showcase high quality fine art by local and regional artists. Hours: Mon.-Sat., 10am-5pm. Contact: 828/452-0593 or at (www.haywoodarts.org).

The Museum of North Carolina Handicrafts, 307 Shelton Street, corner of US 276 So. and Shelton Street, Waynesville. **Ongoing** - Featuring the handicrafts of North Carolina in the historic Sheldon House. Hours: Museum hours change seasonally, call 828/452-1551.

Wentworth

Dan River Art Market & Gallery, 1122 NC Hwy. 65, Wentworth. **Ongoing** - The gallery offers art and craft by local artists and 6 gallery exhibits throughout the year, workshops and lectures. Hours: Thur., 10am-4pm; Fri., 11am-2pm; and by appt. Contact: 336/349-4039 or at (www.artsin-rockingham.org).

Wilmington

Ann Flack Boseman Gallery, Fisher University Union, 2nd Floor, UNC - Wilmington, Wilmington. **Through Oct. 6** - "Memorias de Mi Tierra/Memoirs of My Land". A look into the hearts of local artists of Hispanic-Latino heritage carrying with them the memories and fantasies of their heritage or birth countries as they navigate their lives in the United States. Come enjoy this exhibit as part of Hispanic Heritage Month celebrations that will take place throughout campus through Oct. 15. For more information on these celebrations, please contact UNCW Centro Hispano at (<http://www.uncw.edu/centrohispano>). **Oct. 12 - Nov. 10** - "Windows to the World". A reception will be held on Oct. 12, from 6:30-8pm. This photography exhibit features photos submitted by students that have experienced international travel and education abroad in a way that has allowed them to see the world in a new light. These student photos will show various perspectives, worldviews, and overall cultural competence, and will include categories such as People/Animals/Nature, Seahawks Abroad, and Architecture & Cityscapes. Become familiar with the world from the view of others' cameras, and be inspired to create your own journey. Hours: Mon.-Fri., 7am-11pm; Sat., 10am-11pm; and Sun., 1-11pm. Contact: 910/962-7972, 910/962-3842 or e-mail at (artgallery@uncw.edu).

Expo 216, a Gallerium, located at 216 N Front Street, Wilmington. **Through Dec. 31** - "Ghost Trees," featuring a photography exhibition. **Through July 24, 2018** - "Contemplating Tran-

scendence," an installation by Niki Hildebrand. A reception will be held on Oct. 27, from 6-9pm. Hildebrand is back with her glass installations, following last year's titled "Dreaming of the Lungs of the Earth". This new one now has 200 glass flameworked angel wings from earth tones to crystal clear glass. **Ongoing** - Expo 216 was founded by Linda Look and Wade Hughes in 2016 and is a "gallerium," part gallery and part museum, focusing on themes related to environmental and social issues. Hours: Wed.-Sun., noon-6pm. Contact: Brook Bower, Gallerium Manager by calling 910/769-3899 or at (www.expo216.com).

Hannah Block Community Arts Center, 120 South Second Street, Wilmington. **Nov. 3 - 5** - "The Coastal Carolina Clay Guild's annual Holiday Show and Sale". An opening reception will be held on Nov. 3, from 5-8pm. Come enjoy an evening filled with beautiful ceramic works produced by Clay Guild members from all over Southeastern North Carolina. Opening night will also include fine music and light refreshments. The show and sale will continue on Nov. 4 and Nov. 5, from 10am-4pm each day. There will be opportunities for attendees to purchase raffle tickets to win original pieces of ceramic art, donated by each of the participating artists. In addition, this year there will also be a raffle for a one night stay in a luxury suite, dinner for two, and a waived initiation fee to City Club of Wilmington. You do not need to be present to win the raffles. Admission to the sale is free. Contact: e-mail Nancy O'Donohue at (nancy.odonohue@gmail.com) or visit (<http://www.coastalcarolinaclayguild.org/home>).

Louise Wells Cameron Art Museum, @ intersection of Independence Blvd. & South 17th Street, Wilmington. **Through Feb. 11, 2018** - "Created by Light". Exploring the photography collections of nine North Carolina art museums, the exhibition "Created by Light" will showcase over 100 photographs highlighting both the pioneers of the medium and contemporary artists working in the field today. CAM invited eight North Carolina art museums to participate in this collaborative exhibition, asking each to curate which photographs to feature from their permanent collections. One museum focused on Bauhaus works created between the world wars, another curated a body of work by North Carolina photographers, while others chose work by such well-known artists as Robert Mapplethorpe, Andres Serrano, Mickalene Thomas, Burk Uzzle, Edward Weston, Aaron Siskind, Francesca Woodman and Ansel Adams. **Pancoe Art Education Center, Exhibition Cases, Ongoing** - View some of the Seagrave and contemporary pottery from the museum's permanent collection in the cases. These include the works of resident artist Hiroshi Sueyoshi, Ben Owen III and Jugtown Pottery among other works. Admission: Yes. Hours: Tue.-Sun., 10am-5pm and Thur. till 9pm. Contact: 910/395-5999 or at (www.cameronart-museum.org).

MC Erny Gallery, WHQR Public Radio, 254 N. Front Street, Suite 300, Wilmington. **Through Nov. 10** - "Array of Color," featuring a celebration of color and form featuring works by Anne Trombetta and Mary Zio. A reception will be held on Oct. 27, from 6-9pm. Hours: Mon.-Fri., 10am-4pm, Contact: 910/343-1640 or e-mail to (whqr@whqr.org).

ALTERNATE ART SPACES - Wilmington **Airlie Gardens**, 300 Airlie Road, Wilmington. **Ongoing** - Located two miles west of Wrightsville Beach in Wilmington, North Carolina, Airlie Gardens encompasses 67 acres of walking paths, a freshwater lake, and formal gardens that showcase seasonal blooms, mighty live oaks, historic structures, and contemporary sculpture. Airlie is a member of the North Carolina Birding Trail, and it's diverse ecosystems provide unique habitats for a variety of colorful wildlife. Discover what makes Airlie Gardens a premiere garden of the South and a prime destination spot for garden and nature lovers from around the world. Come discover the beauty. Admission: Yes. Hours: Open 7-days a week 9am-5pm. Contact: 910/798-7700 or at (www.airliegarden.org).

The Bellamy Mansion Museum, 503 Market Street, Wilmington. **Through Oct. 22** - "A Fresh Look," featuring new works by Owen Wexler. Hours: Tue.-Sat., 10am-5pm & Sun., 1-5pm. Contact: 910/251-3700 or at (www.bellamy-mansion.org).

Winston-Salem

AFAS Center for the Arts, 630 N. Liberty Street, located at the corner of Liberty and Seventh streets, in the Arts District next to ARTivity on the Green, Winston-Salem. **Ongoing** - The local nonprofit organization Art for Art's Sake (AFAS) commissioned the 14,500 square foot, three-story building, which was constructed over a period of 15 months. This latest addition to the city's burgeoning Arts District consolidates several AFAS activities and locations that

were previously scattered throughout downtown. The building houses AFAS' headquarters, as well as Red Dog Gallery, Unleashed Arts Center and Studio 2, a jewelry studio. There are also 10 artist studios available for lease at affordable rates. Hours: Tue.-Fri., noon-6pm & Sat., 11am-4pm. Contact: Harry Knabb at 336/416-0089.

Artworks Gallery, 564 N. Trade Street, Winston-Salem. **Ongoing** - The gallery is the longest running cooperative gallery established by artists for artist members, showing 12 exhibits per year in the heart of Winston-Salem's Art District. Approx. 21 artists show their work in mediums such as painting, watercolor, drawing, photography, sculpture, encaustic wax, and digital art. The gallery features the work of Mary Beth Blackwell-Chapman, E.Faye Collins, Chris Flory, Carl Gericke, Don Green, Nancy Hayes, Ted Hill, Alix Hitchcock, Virginia Ingram, Steven Hull Jones, Lea Lackey-Zachmann, Nanu LaRosee, Kate Magruder, Beverly Noyes, Nelida Otero, Dave Riedel, Ben Rouzie, Inez Ruchte, Virginia Shepley, Ed Shewmake, Mitzi Shewmake, Anne Kesler Shields, Kimberly Varnadoe, Jody Walker, Mona Wu, Tyrie Brown, Mike Foley, and John Hamilton. Hours: Tue.-Sat. 11am-5pm and Sun., 1-4pm. Contact: 336/723-5890 or at (www.artworks-gallery.org).

4th Dimension Gallery, Commerce Plaza, 411 W. Fourth St., downstairs from Cat's Corner, Winston-Salem. **Ongoing** - Featuring works by art students from Winston-Salem's colleges and universities - the NC School of the Arts, Salem College, Wake Forest University and Winston-Salem State University. Hours: Fri., 5-8pm & Sat., 5-8pm. Contact: 336/249-0418.

Piedmont Craftsmen Gallery, 601 North Trade Street, Winston-Salem. **Ongoing** - Featuring fine art crafts by over 350 of the best artisans of the Southeast. Hours: Tue.-Fri., 10:30am-5pm & Sat., 11am-4pm. Contact: 336/725-1516 or at (www.piedmontcraftsmen.org).



Georgia O'Keeffe (American, 1887-1986). "Ram's Head, White Hollyhock—Hills" (Ram's Head and White Hollyhock, NM), 1935. Oil on canvas, 30 x 36 in. (76.2 x 91.4 cm). Brooklyn Museum; Bequest of Edith and Milton Lowenthal, 1992.11.28. (Photo: Brooklyn Museum)

Reynolda House Museum of American Art, Reynolda Road, Winston-Salem. **Mary and Charlie Babcock Wing Gallery, Through Nov. 19** - "Georgia O'Keeffe: Living Modern". Reynolda House Museum of American Art will mark its centennial as an estate and its fiftieth anniversary as a museum with an exciting and timely exhibition of the work of Georgia O'Keeffe. The exhibit explores how the artist's modern sensibility saturated her art, her life, her homes, and her carefully fashioned public (and private) personas. Reynolda House is one of only three venues to host the exhibition, and the only venue south of New York. **Ongoing** - Collection of 18th through 20th century art, sculpture, American art, and pottery. Admission: Yes. Hours: Tue.-Sat., 9:30am-4:30pm & Sun., 1:30-4:30pm. Contact: 336/725-5325 or at (www.reynoldahouse.org).

SEED Collective Gallery, 205 W. Sixth Street, entrance is on "Soho Alley", Winston-Salem. **Ongoing** - Works by a cooperative group of artists in various mediums. Hours: Sat. from 11am-5pm & by appt. Contact: 336/722-2345.

The Gallery of the Arts, Commerce Plaza, 411 W. Fourth Street, just next door to the Stevens Center, Winston-Salem. **Ongoing** - the facility includes The Community Arts Cafe's Gallery of the Arts, Underground Theatre Gallery, and Arts Alley featuring works from artists of the Triad region of North Carolina including fine art, fine craft, literature, recorded music, videos and any other products available exclusively through CAC. Hours: Mon.-Sat., noon-6pm & during First Friday Gallery Hop. Contact: 336/793-8000 or at (www.communityartscafe.com).

Unleashed Arts Center, 204 West 6th Street, Winston-Salem. **Ongoing** - The Center is a special initiative by The AFAS Group to foster an appreciation of art and to encourage the development of emerging artists. The center provides a venue for art shows, seminars, artist demonstrations and includes working artists studios. Hours: Tue.-Fri., noon-6pm and Sat., 11am-4pm. Contact: 336/413-6667 or at (www.theafasgroup.com).