

(www.blackcreekarts.org).

### Hilton Head Island Area

**Hilton Head Regional Healthcare Gallery**, Coastal Discovery Museum, at Honey Horn, off Highway 278, across from Gumtree Road, Hilton Head Island. **Through Jan. 31** - "Grass Roots: African Origins of an American Art". This exhibition traces the histories of coiled basketry in Africa and America and explores the evolution of an ancient art. **Ongoing** - This beautiful 69-acre site will serve as the Museum's base for programs highlighting the cultural heritage and natural history of the Lowcountry. And, it will provide a signature venue for community events for people of all ages. The opening includes the renovation of a 6,000 sq. foot former hunting retreat, renamed the "Discovery House," containing the Museum's new interactive exhibits, temporary gallery space and community meeting rooms. Hours: Mon.-Sat., 9am-4:30pm & Sun., 11am-3pm. Contact: 843-689-3033 ext. 224 or at (www.coastaldiscovery.org).

**Walter Greer Gallery, at the Arts Center of Coastal Carolina, 14 Shelter Cove Lane, Hilton Head Island. Jan. 4 - 29** - "New Space, New Art, New Zing!" featuring works by members of the Art League of Hilton Head who have taken over the Walter Greer Gallery. Join them for a Champagne Reception, Saturday, Jan. 8, 5-7pm. Hours: Mon.-Sat., 10am-4pm. Contact: 843/681-5060 or at ([www.artleaguehi.org](http://www.artleaguehi.org)).

### Laurens

**The Artist's Coop, 113 E. Laurens St., on the Historic Downtown Square., Laurens. Ongoing** - Featuring works by over 50 cooperative members, including paintings, jewelry, pottery and weavings. Also art classes for children and adults. Hours: Tue.-Fri., 10am-5:30pm & Sat., 10am-3pm. Contact: 864/984-9359 or at ([www.laurensartistscoop.org](http://www.laurensartistscoop.org)).

### McClellanville

**The Village Museum**, next to Town Hall, 401 Pinckney Street, McClellanville. **Ongoing** - Exhibits demonstrate a time line of history beginning with villages of the Seewee Indians and the settlement at Jamestown, SC, by the French Huguenots, through the rice planting on the great Santee plantations and the establishment of the town of McClellanville as a coastal resort. Displays also tell of the simple lifestyle of the the postwar farmer, the rise of timber harvesting in the 20th Century and the growth of the local seafood industry. The museum attempts to both educate its visitors as well as entertain them. Admission: Yes. Hours: Thur.-Sat., 10am-5pm (closed noon-1pm for lunch). Contact: 843/887-3030 or at ([www.villagemuseum.com](http://www.villagemuseum.com)).

### McCormick

**The Artisans Gallery Shop at the MACK**, 115 South Main St., located in the historic Keturah Hotel, McCormick. **Ongoing** - Featuring works of over 30 artisans including paintings, pottery, jewelry, jackets, gourds, woodworking, textiles, soaps and more. Hours: Mon.-Sat., 10am-4pm. Contact: 864/852-3216.

### Moncks Corner

**The Little Gallery**, inside the store at the visitor's center at Mepkin Abbey, 1098 Mepkin Abbey Road, near Moncks Corner. **Ongoing** - Featuring a collection of contemporary craft works including weaving, art glass, woodcarving and other media, as well as works by over 30 potters from NC and SC including Carolina Cercone, James Cornell, Susan Filley, Terry Gess, Rand Heazlitt, Shawn Ireland, Nina Liu, Linda Sharpless, and John Vasquez. Hours: Tue.-Sun., 9am-4:30pm. Contact: 843/761-8509 or at ([www.mepkinabbey.org](http://www.mepkinabbey.org)).

### Mount Pleasant

**Sweetgrass Cultural Arts Pavilion**, Mount Pleasant Memorial Waterfront Park, 99 Harry M. Hallman, Jr. Blvd., under the bridge, Mount Pleasant. **Ongoing** - The pavilion is a tribute to the generations of men and women who have carried on this African tradition for more than three centuries. Kiosks and panels tell the history of this unique craft, and the open-air facility provides a venue for local basketmakers to display and sell their wares. Hours: daily, 9am-5pm. Contact: 800/774-0006 or at ([www.townofmountpleasant.com](http://www.townofmountpleasant.com)).

### Myrtle Beach / Grand Strand

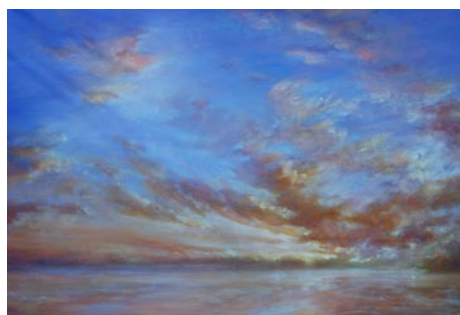
Chapin Park, 1400 Kings Hwy and 16th Ave. N., Myrtle Beach. Nov. 6 & 7, 2010, from 10am-4pm - "38th Annual Art in the Park - Show & Sale," sponsored by Waccamaw Arts and Crafts Guild. We will have over 60 artists from the East Coast, as far away as TN, with about 20 of those art-

ists from our local area. Typical art will include Paintings, Woodworking, Photography, Jewelry, Fabric, Glass, Metal, Pottery, Leather and Stone. Free admission and Kid friendly. For info call JoAnne Utterback, 843/446-7471 or at ([www.artsyparksy.com](http://www.artsyparksy.com)).

**Franklin G. Burroughs • Simeon B. Chapin Art Museum**, 3100 South Ocean Blvd., beside Springmaid Beach, Myrtle Beach. **Through Jan. 9** - "Alex Powers: A Retrospective". The year 2010 marks the 40th anniversary of nationally recognized artist, teacher and juror, Alex Powers' life as a painter. To commemorate this significant milestone, the Art Museum will exhibit retrospective of Powers' works with an accompanying catalogue. **Jan. 9 - Mar. 20** - "Serendipity: Raku by Steven Forbes-deSoule". North Carolina artist Steven Forbes-deSoule's elegant, one of a kind, raku-fired pottery reflects the cumulative skills gained over thirty years as a studio ceramicist. The exhibit will include his familiar large ovoid pieces as well as some from his new series of winged bowls and vases. **Jan. 16 - Apr. 28** - "Robert Courtright: Collages, Collage Construction, and Masks, 1953-2008". One of the largest most comprehensive exhibitions of his work ever mounted, the exhibit features over 70 works, from early collages and masks to new collage constructions made specifically for this exhibit. Courtright is rarely exhibited in his home state of South Carolina. Hours: Tue.-Sat., 10am-4pm & Sun., 1-4pm. Contact: 843/238-2510 or at ([www.myrtlebeachartmuseum.org](http://www.myrtlebeachartmuseum.org)).

### North Charleston

**City of North Charleston Art Gallery**, North Charleston Performing Arts Center & Convention Center Complex, common walkways, 5001 Coliseum Drive, North Charleston. **Jan. 3 - 31** - "E Motions," featuring works by the City of North Charleston's Cultural Arts Department's 2010/11 Artist-in-Residence, Deborah Meyer. Meyer will present works in oil and watercolor featuring a variety of subjects. Hours: Mon.-Sat., 10am-4:30pm. Contact: 843/740-5854 or at ([www.northcharleston.org](http://www.northcharleston.org)).



Work by Deborah Meyer

**10 Storehouse Row**, Noisette Blvd., The Navy Yard at Noisette (on the former Charleston Naval Base) North Charleston. **Ongoing** - Exhibits include works from many of the artists/tenants of 10 Storehouse Row. Hours: Mon.-Fri., 8am-6pm. Contact: 843/740-5854 or at ([www.northcharleston.org](http://www.northcharleston.org)).

**The Meeting Place, Front Window**, Olde North Charleston Business District, 1077 E. Montague Ave., North Charleston. **Jan. 3 - Feb. 28** - "Sea and Shore," featuring works by local artist David Springer, who will present metal sculpture depictions of Lowcountry birds, plants, and wildlife. Hours: daylight hours. Contact: 843/740-5854 or at ([www.northcharleston.org](http://www.northcharleston.org)).

ALTERNATE ART SPACES - North Charleston **Riverfront Park**, 1001 Everglades Dr., The Navy Yard at Noisette (former Charleston Naval Base), North Charleston. **Through Mar. 30** - "5th National Outdoor Sculpture Competition & Exhibition". This annual juried competition is installed throughout the picturesque grounds of Riverfront Park. The competition was juried by Stuart Horodner, Artistic Director of the Atlanta Contemporary Art Center. Organized and presented by the City of North Charleston Cultural Arts Department.. Featuring sculptures by George Long of Roswell, GA; Doug Barton of Athens, GA; Carl Billingsly of Ayden, NC; Roger Halligan of Chattanooga, TN; Kristy Summers of Carbondale, IL; Dana Gingras of Mooresville, NC; Corrina Mensoff of Atlanta, GA; Philip Smith of Columbia, MD; Teresa Howachyn (TEKLA) of Black Mountain, NC; Bob Turan of Earlton, NY; and Jim Shultz of North Charleston, SC. Hours: daylight hours. Contact: 843/740-5854 or at ([www.northcharleston.org](http://www.northcharleston.org)).

### Orangeburg

**I.P. Stanback Museum**, S.C. State University, 300 College Street, NE, Orangeburg. **Through Jan. 4** - "Partnership in Social Justice, featuring "Beyond Swastika and Jim Crow: Jewish Refugee Scholars at Black Colleges," created and circulated by the Museum of Jewish Heritage - A Living Memorial to the Holocaust; and "Transcending the Legacy of Slavery and the Holocaust" an art exhibition organized by the Idea Coalition. By the time World War II began, Germany had purged itself of its Jewish profes-

sors, scientists and scholars. Some of these refugee academics found refuge in the United States. Beyond Swastika and Jim Crow: Jewish Refugee Scholars at Black Colleges exhibition tells the story some of these recent escapees from persecution in Nazi Germany, who, facing discrimination and an uncertain future, were welcomed by Black Colleges in the American South. Images by artists who share their visual interpretation of Jim Crow, Civil Rights and the Holocaust are also presented including works by: Camille Billops, Sandra Brett, Schroeder Cherry, Stephen Crall, Tololupe Filani, Tyrone Geter, Vanessa German, Jesse Guinyard, Diamond Howard, Doris Kennedy, Janet Kozachek, Kimberly LeDee, Rank Martin, Wendell Simons, Leo Twigg, Colin Quashie, Jonathan Walsh, and Ellen Zisholtz. Hours: Mon.-Fri., 9am-4:30pm. Contact: 803/536-7174.

**Lusty Gallery**, Orangeburg County Fine Arts Center, Edisto Memorial Gardens, 649 Riverside Drive, Orangeburg. **Ongoing** - Featuring a permanent display of works by Coan Culler, Pernille Dake, Betty Edmonds, Elsie Fogle, Michiko Johnston, Zita Mellon, Barbara Townsend, Isaiah Zagar, and local schoolchildren. Hours: Mon.-Thur., 8:30am-4:30pm & Fri., 8:30am-noon. Contact: Elizabeth Thomas at 803/536-4074 or e-mail to ([oarts@bellsouth.net](mailto:oarts@bellsouth.net)).

### Pawleys Island, Litchfield & Murrells Inlet

**Brookgreen Gardens**, US 17, south of Murrells Inlet. **Noble Gallery, Through Jan. 2** - "Signs of the Season in Flora and Fauna," features 11 vintage carousel animals and a ten-foot Christmas tree created from 200 poinsettia plants. **Jennewein Gallery, Through Jan. 2** - "Signs of the Season in Art and History," includes sculpture from national, regional, and local artists and five charming Christmas trees with late 19th century through mid-20th century holiday ornamentation. **Ongoing** - "Lowcountry: Change and Continuity," a major new exhibit, tells the story of human interaction with this land over the centuries. It features wall size photomurals by SC naturalist photographer Tom Blagden, along with a range of artifacts tracing the history of man's occupation of this extraordinary landscape. **General Gardens, Ongoing** - One of the largest collections of outdoor sculpture in America. This preeminent collection of American representational sculpture includes - 560 works by 240 artists - representing such well-known artists as Charles Parks, Daniel Chester French, Carl Milles, August Saint-Gaudens and Anna Hyatt Huntington. Hours: daily, 9:30am-5pm Admission: Yes. Admission to Brookgreen is good for seven days. Contact: 843/235-6000, 800-849-1931, or at ([www.brookgreen.org](http://www.brookgreen.org)).

### Pickens

**Pickens County Art and Historical Museum**, 307 Johnston Street, Pickens. **Through Feb. 10** - "Shutter / Shuttle," features black & white photography by Brain S. Kelley exhibited alongside woven tapestries made by Connie Lippert. **Through Feb. 10** - "Melissa Earley: 10+ (A Decade of Beadwork and Other Art)," featuring beadwork and paintings spanning more than a decade and highlighting the most significant works from the career of Melissa Earley. **Through Feb. 10** - "Barbara St Denis: Mixed Media". St Denis is a signature member of the Georgia Watercolor Society and the Southern Watercolor Society. She is also a member in Excellence of the South Carolina Watermedia Society. Hours: Mon.-Fri., 9am-5pm; Thur. till 7:30pm & Sat., 9am-4:30pm. Contact: 864/898-5963 or at ([www.co.pickens.sc.us/culturalcommission](http://www.co.pickens.sc.us/culturalcommission)).

### Seneca Area

**Blue Ridge Arts Council Gallery, 111 E. South 2nd & Townville Streets, Seneca. Jan. 21 - Mar. 4** - "Annual Open Juried Show". The show will be juried by Annette Lowman, Kathy Young, and Danielle Dahl. Hours: Tue.-Fri., 1-5pm. Contact: 864/882-2722 or at ([www.blueridgeartscenter.com](http://www.blueridgeartscenter.com)).

### Spartanburg

**Downtown Spartanburg, Jan. 20, 5-9pm** - "Art Walk Spartanburg". Held on the 3rd Thur, of every month art galleries and art spaces in downtown Spartanburg will open their doors. Participating are: Spartanburg Art Museum, HUB-BUB showroom, Carolina Gallery, and MYST. For more information call 864/585-3335 or visit ([www.carolinagalleryart.com](http://www.carolinagalleryart.com)).

**Curtis R. Harley Art Gallery**, Performing Arts Center, USC-Upstate, 800 University Way, Spartanburg. **Jan. 10 - Feb. 18** - "Encouraging the Artist Within". The 2011 graduating class of art education students at the USC Upstate will hold an exhibition to showcase their work from the past four years. The participating seniors are: Rachel Crow, Katie Hammett, Allyse Ingraham, Parker Mullinax, Maggie Poole, Connie Stuart, and Christopher Turner. An opening reception will be held on Jan. 18, 2011, from 7-8:30pm. Hours: Mon.-Fri., 9am-5pm. Contact: Gallery Director,

Jane Nodine at 864/503-5838 or e-mail at ([jnodine@uscupstate.edu](mailto:jnodine@uscupstate.edu)).

**Focus Educational Gallery**, second floor, Performing Arts Center, USC-Upstate, 800 University Way, Spartanburg. **Jan. 10 - Feb. 25** - "Upstate Art Education Senior Show Exhibit". Hours: Mon.-Thur., 9am-5pm & Fri., 9am-1pm. Contact: Gallery Director, Dr. Mary Lou Hightower at 864/503-5817 or e-mail to ([mhightower@uscupstate.edu](mailto:mhightower@uscupstate.edu)).

**Guild Gallery**, Artists' Guild of Spartanburg, Chapman Cultural Center, 200 East St. John St. Spartanburg. **Jan. 4 - 28** - "An Interesting Occasion: Functional Pottery For Entertaining," featuring works by Erin Cramer. Hours: Mon.-Fri., 10am-5pm & Sat.-Sun., 1-5pm. Contact Laura Pinkley at 864/764-9568.

**Justine V.R. "Nita" Milliken Wing**, Milliken Fine Arts Building, Converse College, Spartanburg. **Ongoing** - Featuring a collection of 52 prints, given by Spartanburg resident Frank Toms which includes works by Joan Miro, Salvador Dali, Alexander Calder, Helmut Newton and others. Hours: Mon.-Fri., 9am-5pm. Contact: 864/596-9181 or e-mail at ([artdesign@converse.edu](mailto:artdesign@converse.edu)).

**Milliken Art Gallery**, Converse College, Spartanburg. **Jan. 6 - Feb. 3** - "Women in Books: Uncovered - A Decade Later". The Milliken Art Gallery is hosting a unique exhibit of artist's books created by many of the women who were featured in the 2001 "More Than Words Can Say" exhibition. Hours: Mon.-Fri., 9am-5pm & Sun., 2-5pm. Contact: 864/596-9181 or at ([www.converse.edu/millikenartgallery/](http://www.converse.edu/millikenartgallery/)).

**Spartanburg Art Museum, Chapman Cultural Arts Center, 200 East St. John Street, Spartanburg. Through Feb. 5** - "PostSecret: Pop Culture Phenomenon". In Nov. 2004, Frank Warren handed out 3,000 postcards to strangers. He invited people to write down a secret anonymously and mail it to him. Each secret had to be true and something that had never been shared with another person. After the first exhibition closed, word of the project spread. People began crafting their own homemade postcards and the artful secrets began arriving from every continent. Today, Warren has received more than 150,000 postcards and they continue to come at a rate of about 1,000 per week. The PostSecret exhibition features more than 400 postcards that bring together the most powerful, poignant, and beautifully intimate secrets Warren has received. Admission: Yes. Hours: Wed.-Fri, 10am-5pm; Sat., 10am-5pm; and till 9pm on 3rd Thur. of each month. Closed on national holidays. Contact: 864/582-7616 or at ([www.spartanburgartmuseum.org](http://www.spartanburgartmuseum.org)).

ALTERNATE ART SPACES - Spartanburg **Campus of University of South Carolina Upstate**, 800 University Way, Spartanburg. **Ongoing** - "USC Upstate Outdoor Sculpture Collection". Available to viewers year-round, these 13 works can be seen in front of the Campus Life Center, the Humanities and Performing Arts Center, the Horace C. Smith Science Building, Tukey Theatre and the Kathryn Hicks Visual Arts Center. While the majority of the outdoor sculptures belong to internationally acclaimed artist Bob Donger, other artists included are Jim Gallucci, Daingerfiled Ashton, Winston Wingo, Dan Millsbaugh, Adam Walls, and Hanna Jubran. Cell phone tour info at (864-607-9224). For more info contact Jane Nodine at 864/503-5838 or e-mail to ([jnodine@uscupstate.edu](mailto:jnodine@uscupstate.edu)).

**Campus of University of South Carolina Upstate**, 800 University Way, Spartanburg. **Through May 30** - "Mayo Mac Boggs: A Retrospective Exhibition," including a selection of monumental outdoor sculptures. Hours: reg. campus hours. For more info contact Jane Nodine at 864/503-5838 or e-mail to ([jnodine@uscupstate.edu](mailto:jnodine@uscupstate.edu)).

**Converse College Campus**, downtown Spartanburg. **Through Mar. 30** - "The Emerging Spirit," presenting a series of 12 though-provoking sculptures by Converse alumna Berry Bate, a pioneer in the traditionally male-dominated arena of metal sculpture artists. Hours: reg. campus hours. Contact: Kathryn Boucher at ([kathryn.boucher@converse.edu](mailto:kathryn.boucher@converse.edu)).

### Summerton

**The Water Lily Art Gallery**, 105 Main St., Summerton. **Ongoing** - Featuring works in watercolor, oil, acrylic, etchings, pottery, ceramics, sculpture, woodcrafts, jewelry and mosaics by Bob Amesbury, Susan Campbell, Laurette Caron, Phyllis Coates Behrens, Suzie Czerwinski, Carrie Detwiller, Lynda Duffy, Wade Edwards, Dickie Felder, Jane Gibson, Garland Hart, Ernest Hampton, Judy Latham, David Manley, Diane Munkittrick, Chris Patterson, Sharon Phelps, Jane Shoener, Betsey Sloan, Patty Stewart, Seth Stewart, Barbara Surette,

continued on Page 30