

# NC Institutional Galleries

continued from Page 65

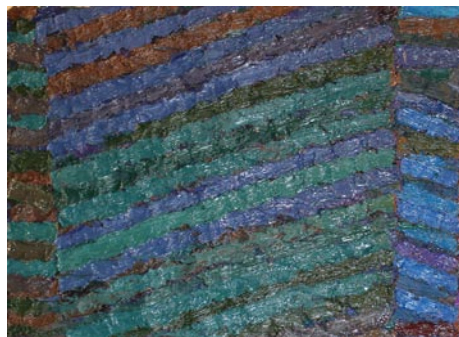
Patrick County, VA, award winning water color artist Robert Flowers has called North Carolina home since 1980. Often described as a man 'possessed of a contented heart', Robert's paintings are reverent reflections of his rural heritage. Hours: Mon.-Fri., 9am-5pm & one hour before performances. Contact: call 252/985-5268 or at ([www.ncwc.edu/Arts/Mims/](http://www.ncwc.edu/Arts/Mims/)).

## Rutherfordton

**Rutherford County Visual Arts Center & Gallery**, 160 N. Main Street, corner of Main St. and E. Court St., Rutherfordton. **Ongoing** - The gallery represents local artists, both regionally and nationally known, in a variety of media from wood, glass, metal, clay, painting, photography, and jewelry. Artwork is available for sale in all price ranges. Hours: Tue.-Sat., 10am-3pm. Contact: 828/288-5009 or at ([www.rcvag.com](http://www.rcvag.com)).

## Salisbury/Spencer

**Throughout Salisbury & Spencer, Nov. 9, from 1-5pm** - "Second Saturday Art Crawl," where more than 20 professional artists, studios and galleries offer visitors new art, special events, and activities. Spend the day and see great art, talk to artists, hear live music, and dine at local restaurants. Free admission to all events and activities. Maps are available at the Visitor Center in Salisbury and at all participating venues. Free parking available in all locations. For more info call 704/638-9887 or visit ([www.rowanartcrawl.com](http://www.rowanartcrawl.com)).



Work by Brett Baker

**Waterworks Visual Arts Center**, 123 E. Liberty St., Salisbury. **Through Feb. 1, 2014** - "Restructure - Contrast and Balance". Three regional artists' diverging styles meet in a challenging exhibition that highlights the juxtaposition of contrasting elements, challenging the viewer to explore the concept of co-existing contrasts that present an array of conflicts. This exhibition examines how artists arrange elements in their work to depict the complex dynamic relationships between distinctly different elements and ideas. Brett Baker's paintings are dense, thick abstract matrixes of interlocking marks and rows of vertical and diagonal dashes. Christopher Nitsche builds sculptures that evoke the visual and metaphorical attributes of ships using found object construction and welded steel works. Leslie Pontz creates unique sculpture by crocheting wire and monofilament forms and combining them with iron and fiber elements resulting in non-traditional fiber sculptures that challenge the senses and the mind. Admission: Free, donations appreciated. Hours: Mon.-Fri., 10am-5pm; Thur. till 7pm & Sat., 11am-3pm. Contact: 704/636-1882 or at ([www.waterworks.org](http://www.waterworks.org)).

## Seagrove Area



Works by Michele Hastings & Jeff Brown

**Historic Luck's Cannery**, on NC 705, Pottery Highway, located a half mile south of the traffic light in Seagrove. **Nov. 22 - 24** - "6th Annual Celebration of Seagrove Potters". This year's Celebration features 57 Seagrove pottery shops and more than 100 authentic Seagrove artists. The Celebration, held in the historic Luck's Cannery on N.C. Highway 705 in Seagrove, is one of the most spectacular pottery events in North Carolina. Approximately 5,000 people visit each year throughout the weekend. The Friday Night Gala, Nov. 22, provides customers the opportunity to preview all the pottery available and to be first in line to purchase. Additionally, they enjoy live music and meet and greet with Seagrove potters during the catered reception. This year the menu features local restaurant, "Something Different" of Asheboro, live music and festive beverages.

Ticket information at ([www.celebrationofseagrovepotters.com](http://www.celebrationofseagrovepotters.com)). Tickets for the Gala are \$40 in advance. The Gala ticket price also includes Saturday and Sunday admission to the Celebration. Event tickets can be purchased at the door for \$5, with children 12 and under admitted free. Hours: Nov. 22 Gala & Collaborative Auction, 6-9pm, Nov. 23, 9am-6pm; auction 9am-3pm & Nov. 24, 10am-4pm. Contact: call 910/464-6228 or at ([www.CelebrationOfSeagrovePotters.com](http://www.CelebrationOfSeagrovePotters.com)).

**Museum of North Carolina Traditional Pottery**, 122 E. Main St., Seagrove. **Ongoing** - The Museum organization was founded twenty-five years ago in Seagrove, and is dedicated to preserving and perpetuating the pottery tradition. We strive to impart to new generations the history of traditional pottery and an appreciation for its simple and elegant beauty. A display of area pottery is now offered in the old Seagrove grocery building. Hours: Mon.-Sat., 9:30am-3:30pm. Contact: 336/873-7887 or at ([www.seagrovepotteryheritage.com](http://www.seagrovepotteryheritage.com)).

**North Carolina Pottery Center**, 233 East Avenue, Seagrove. **Extended Through Nov. 25** - "Foodwares: Pottery for Storage and Preparation of Food". The exhibition was curated by Mary Farrell. The combination of pottery and food is a natural! This exhibit will explore the changes over time in North Carolina-made pottery used for food storage and for preparation and cooking of food. Pottery from the following contemporary North Carolina will be included: Jon Arsenault of Youngs Cove Pottery in Asheville, Robin Beckett of Beckett Pottery in Pfafftown, Bulldog Pottery of Seagrove, Cady Clayworks of Seagrove, From the Ground Up of Robbins, Tina Granville of Raleigh, Tom Gray Pottery of Seagrove, Deborah Harris of Chapel Hill, Hickory Hill Pottery of Seagrove, Jugtown Pottery of Seagrove, Latham's Pottery of Asheboro, Liberty Stoneware of Liberty, McNeills Pottery of Seagrove, New Salem Pottery of Randleman, O'Quinn Pottery of Seagrove, Original Owens Pottery of Seagrove, Molly Pasca of Durham, Ron Philbeck of Shelby, Ron Propst of Winston-Salem, Ray Pottery of Seagrove, Joy Tanner of Burnsville, Charlie Tefft of Greensboro, Thomas Pottery of Seagrove, Brad Tucker of Creedmoor, Tim Turner of Linville, David Voorhees of Zirconia, and Doc Welty of Leicester Valley Clay in Leicester. **Ongoing** - Featuring permanent and changing exhibits on the history of North Carolina pottery, "The North Carolina Pottery Tradition" and "Seagrove Area Pottery". The Center also offers information on activities, maps and information about the potteries located in the Seagrove area and across the state. A display of representative works from more than 90 area potteries is also offered. Hours: Tue.-Sat., 10am-4pm. Contact 336/873-8430 or at ([www.ncpotterycenter.org](http://www.ncpotterycenter.org)).

**Seagrove Elementary School**, located at 528 Old Plank Road in Seagrove. **Nov. 23 & 24, 2013** - "Annual Seagrove Pottery Festival," featuring works by Seagrove area potters and potters of the region. Admission: Yes. Hours: daily 9am-5pm. Contact: call Martha Graves at 336/873-7887.

## Shelby

**ALTERNATE ART SPACES - Shelby Legrand Center**, 1800 E. Marion St., Shelby. **Nov. 16, 2013, 10am-4pm** - "2013 Carolina Pottery Festival". There will be over 100 potters showing and selling work in this 13th year celebration of Carolina pottery. Admission is \$3.00 for those aged 15 and older and part of this admission benefits the programs of the Cleveland County Arts Council, who provide volunteers to assist at the Festival. Contact: Vicki Gill by calling 704/867-5578 or visit ([www.carolinapotteryfestival.org](http://www.carolinapotteryfestival.org)).

## Siler City

**Throughout Siler City, Nov. 15, 6-9pm** - "Siler City Art Walk," featuring exhibits at many of the city's exhibit spaces, live entertainment, artist demonstrations, food, local wine or beer tastings, offered in town on the 3rd Fri. of the month. Hosted by the North Carolina Arts Incubator. Contact: 919/663-2072 or at ([www.ncartsincubator.org](http://www.ncartsincubator.org)).

**North Carolina Arts Incubator Gallery**, 223 N Chatham Ave., Siler City. **Ongoing** - Featuring the handcrafted work of over 30 Incubator and regional artists in a variety of mediums including painting, pottery, stained and fused glass, fabric art, cards, photography, wood, jewelry, metal, baskets and more. There is a broad range of items and prices. Hours: Mon.-Sat., 10am-5pm; & 3rd Fri., 10am-9pm. Contact:

919/663-2072 or at ([www.ncartsincubator.org](http://www.ncartsincubator.org)).

**PAF Gallery**, 223 N Chatham Ave., Siler City. **Through Nov. 7** - "21st Annual Chatham County Open Studio Tour Show," featuring works from artists on the tour. **Ongoing** - A gallery featuring works by local and regional artists. Hours: 3rd Fri. 6-9pm. Contact: 919/663-2072 or at ([www.ncartsincubator.org](http://www.ncartsincubator.org)).

## Southern Pines

**Campbell House Galleries**, Arts Council of Moore County, 482 E. Connecticut Ave., Southern Pines. **Nov. 1 - Dec. 20** - "North Carolina Wildlife Art Society Exhibition". Hours: Mon.-Fri., 9am-5pm. Contact: 910/692-4356 or at ([www.mooreart.org](http://www.mooreart.org)).

## Southport

**Franklin Square Gallery**, 130 E. West St., Southport. **Ongoing** - Works by members of the Associated Artists of Southport. Hours: Mon.-Sat., 10am-5pm. Contact: 910/457-5450 or at ([www.franklinsquaregallery.com](http://www.franklinsquaregallery.com)).

## Statesville



Work by Christine Eadie

**Louise Gilbert Gallery**, Mitchelle Community College, located in the Wallace House, 420 Walnut Street, Statesville. **Nov. 7 - 21** - "Christine Eadie: Photographs". A reception will be held on Nov. 7, from 5:30-7pm. A native of Sydney, Australia, Eadie's passion for painting and photography began at age 11. She studied painting at an art school for two years in Halkida, Greece, but is primarily a self-taught photographer. Eadie later moved to the United States and worked as a commercial portrait, wedding and fashion photographer. Hours: Mon.-Wed., 9am-1pm & Thur., 1-5pm. Contact: call Mark Flake at 704/878-3337 or e-mail to ([mflake@mitchellcc.edu](mailto:mflake@mitchellcc.edu)).

## Sylva

**Gallery One**, Main Street, Sylva. **Ongoing** - Home of the Jackson County Visual Arts Association. Hours: Mon.-Fri., 11am-3pm. Contact: call Ray Menzie at 828/293-2239.

## Tryon

**Tryon Arts and Crafts**, 373 Harmon Field Rd., in the old Tryon Middle School, Tryon. **Gallery & Gift Shop, Ongoing** - Gift Shop features juried works by regional artisans to selected work produced by our instructors and students. Hours: Mon.-Fri., 10am-4pm & Sat. 10am -1pm. Contact: 828/859-8323 or at ([www.tryonartsandcrafts.org](http://www.tryonartsandcrafts.org)).

**Upstairs Artspace**, 49 South Trade Street, Tryon. **Through Nov. 15** - "The Things We Know," curated by Connie Bostic, celebrates this outstanding accomplishment of the Upstairs Artspace on its 35th anniversary, by exploring the many legacies of Conceptualism and the ways in which they are being interpreted today. Seven regional artists will present exciting, and sometimes bewildering, works of art utilizing diverse media, such as sound and light, in a variety of non-traditional formats. Participating artists include: Brenda Coates, Severn Eaton, Heather Lewis, Jimmy O'Neil, Sean Pace, Melissa Terrezza and Amanda Wiles. Hours: Tue.-Sat., 11am-5pm. Contact: 828-859-2828 or at ([www.upstairsartspace.org](http://www.upstairsartspace.org)).

## Valdese

**Valdese Heritage Arts Center**, 146 Main Street West, Valdese. **Ongoing** - The center offers a great selection of unique gifts on exhibit and for sale, including, but not limited to original paintings, pottery, needlework, wood-carvings, hand crafted furniture, ceramic sculptures, stained glass, photography, jewelry, floral arrangements greeting cards, quilts and home made soap. Hours: Mon.-Fri., 9am-5pm & Sat., 11am-3pm. Contact: 828/874-1849 or at (<http://vhac.webs.com>).

## Waynesville

**Main Street and Depot Street, Waynesville. Nov. 1, 5-9pm** - "First Friday Art After Dark." The Waynesville Gallery Association is excited to present Art After Dark, on the first Friday of every month. Enjoy a stroll through working studios and galleries on Main Street and Depot Street. Festive Art After Dark flags denote participating galleries, such as Haywood County Arts Council's Gallery 86, Earthworks, Jeweler's Workbench, Twigs and Leaves Gallery, TPennington Art Gallery, Main Street Artist's Co-op, Grace Cathey Sculpture Garden and Gallery, and the Village Framer. With beautiful weather upon us, it is a perfect night to explore the open air and delights of Main Street. A vibrant community of art galleries that stay open late and a handful of fabulous restaurants all within walking distance make for a fantastic evening. What's not to love? A short walk off of Main St. and you will discover Grace Cathey's Sculpture Garden. "Grace Cathey Sculpture Garden and Gallery in the Historic Frog Level district is a place travelers must visit." Rand McNally Road Atlas. Contact: 828-456-3517 or at ([www.waynesvillegalleryassociation.com](http://www.waynesvillegalleryassociation.com)).

**Little Gallery on Church Street**, 37 Church Street, Waynesville. **Ongoing** - Featuring montly exhibits by regional arts. Sponsored by the Haywood County Arts Council. Hours: Mon.-Fri., 9am-5pm. Contact: 828/452-0593, e-mail at ([info@haywoodarts.org](mailto:info@haywoodarts.org)) or at ([www.haywoodarts.org](http://www.haywoodarts.org)).

**The Haywood County Arts Council's Gallery 86**, 86 N. Main Street, Waynesville. **Through Nov. 9** - "The Master Artists Exhibit," featuring works by Desmond Suarez, Terance Painter, Sarah Wells Rolland, Diannah Beauregard and Jo Ridge Kelley. **Ongoing** - The gallery lends itself to showcase high quality fine art by local and regional artists. Hours: Mon.-Sat., 10am-5pm. Contact: 828/452-0593 or at ([www.haywoodarts.org](http://www.haywoodarts.org)).

**The Museum of North Carolina Handicrafts**, 307 Shelton Street, corner of US 276 So. and Shelton Street, Waynesville. **Ongoing** - Featuring the handicrafts of North Carolina in the historic Sheldon House. Hours: Museum hours change seasonally, call 828/452-1551.

## Wentworth

**Throughout Rockingham County, Nov. 1 - 3** - "3rd annual Artist Open Studio Tour". The Tour features distinctive local art and craft, artist demonstrations, presentations, music, literary reading and book signings, light refreshments and more. Over 24 artists participating in locations over Rockingham County, download the map or request one to navigate the self-guided tour that begins on Friday, 11/1 at all studio locations from 1-4pm, with an opening reception from 6-8pm at the Dan River Art Market & Gallery, 1122 NC Hwy 65, Wentworth, NC. Saturday, Nov. 2, Studios and participating businesses are open from 10am-4pm, and Sunday, Nov. 3 from 1-4pm. Admission is free, raffle items, donations and business sponsorships support the project. For more information e-mail ([info@artsinrockingham.org](mailto:info@artsinrockingham.org)), call 336/349-4039, or visit ([www.artsinrockingham.org](http://www.artsinrockingham.org)).

**Dan River Art Market & Gallery**, 1122 NC Hwy. 65, Wentworth. **Ongoing** - The gallery offers art and craft by local artists and 6 gallery exhibits throughout the year, workshops and lectures. Hours: Thur., 10am-4pm; Fri., 11am-2pm; and by appt. Contact: 336/349-4039 or at ([www.artsinrockingham.org](http://www.artsinrockingham.org)).

## Wilmington

**Hannah Block Community Arts Center**, 120 S. Second Street, Wilmington. **Nov. 1 - 3** - "7th Coastal Carolina Clay Guild's Annual Holiday Show and Sale". A reception will be held on Nov. 1, from 5-7pm. Music will be provided by members of the Tallis Chamber Orchestra of Wilmington. The Show and Sale will continue on Saturday and Sunday, Nov. 2 & 3 from 10am-4pm each day. Hours: Fri., 10am-5:30pm; Sat., 10am-5:30pm; & Sun., 10am-4pm. Contact: e-mail to ([publicity1@wilmingtonart.org](mailto:publicity1@wilmingtonart.org)) or visit ([www.wilmingtonart.org](http://www.wilmingtonart.org)).

**Louise Wells Cameron Art Museum**, @ intersection of Independence Blvd. & South 17th Street, Wilmington. **Through Nov. 3** - "Well Suited: The Costumes of Alonzo Wilson". Fine, hand-sewn beadwork, archival-quality costume technique and brilliantly colored feathers; what do these features have in common with the current HBO (Home Box Office) series "Treme" set in post-Katrina New Orleans? Wilmington native Alonzo Wilson, costume designer for the series is the common thread. The exhibition includes exquisitely crafted Mardi Gras Indian suits specially made for "Treme". Additionally, Mardi Gras costumes from select characters, as well as design sketches will be on view. This

continued on Page 67