

NC Commercial Galleries

continued from Page 66

various arts communities where we live. Hours: Wed.-Thur., 11am-6pm; Fri.-Sat., 11am-8pm; and Sun., 1-4pm. Contact: e-mail at (info@pleiadesartdurham.com) or at (http://pleiadesartdurham.com/).

Supergraphic, 601 Ramseur Street, Durham. **Ongoing** - Supergraphic is a creative art studio dedicated to providing work space, equipment and instruction for the production of fine art prints and print media. Hours: open by appointment and during Third Friday art walks. Contact: 919/360-4077 or at (http://durhamsupergraphic.com/).

Through This Lens Photo Gallery, 303 East Chapel Hill St, Durham. **Through Nov. 15** - "Frank Lee Craig". **Ongoing** - Featuring work of national and local artists. Books and postcards also for sale. Framing services. Hours: Tue.-Fri., 10:30am-5:30pm & Sat., 10:30am-2:30pm or by appt. Contact: 919/687-0250 or at (www.throughthislens.com).

Fairview

Willow Wisp Farm Studios Gallery, 1615 Charlotte Hwy, Fairview. **Ongoing** - Featuring works by the instructors and students who have attended Willow Wisp Farm Studios. Hours: Fri.-Sat., 10am-5pm and Sun., 1-5pm. Contact: 888/590-4ART, 828/628-0401, or e-mail at (art@willowwisfarmstudios.com).

Gastonia

Butler Studio Fine Art Gallery, 171 W. Main St., located on the 2nd floor of the brick building next to the Park on Main, Gastonia. **Ongoing** - The gallery will continue to rotate in new works by Curt Butler. Hours: M, T, Th, F, 9am-5pm or by appt. Contact: 704/460-2386 or at (www.butlerstudio.org).

Greensboro Area

Throughout Greensboro, first Fri. of the month, till 9pm - "First Friday," featuring a gallery crawl of several gallery spaces in Greensboro. For further info (www.uacarts.org).

Ambleside Gallery, 528 South Elm Street, Greensboro. **Ongoing** - Featuring works by artists from around the world. Among them are English artists Phil Hobbs, Kenneth Denton, and Matthew Hillier. American painters Bill Hosner, Tracy Reid, Richard Sedlack and Rich Nelson, and internationally recognized Chinese watercolorist Guan Weixing, plus many other noteworthy artists are included in the gallery collections. Hours: Mon.-Sat., 11am-6pm or by appt. Contact: 336/275-9844 or at (www.amblesidearts.com).

ArtWorks Collective Gallery, 205 Lyndon Street, Greensboro. **Ongoing** - Featuring works by members of Lyndon Street ArtWorks center. Hours: Mon.-Sat., 10am-5pm & by appt. Contact: 336/370-0025 or at (www.artworkscollective.com).

Earthworks Gallery, (formerly South Elm Pottery) 500 S. Elm Street, Greensboro. **Ongoing** - Featuring works by Molly Lithgo and Jim Rientjes, proprietors, focusing on NC made art. The primary focus will be pottery, but the gallery will also offer other gift items, such as jewelry, soap, note cards and candles; all made by North Carolina artisans. Hours: Tue.-Sat., 11am-6pm; Sun., noon-5pm & open until 9pm on each 1st Fri. Contact: 336/275-1202 or at (www.earthworkspotterygallery.com).

Elements Gallery, 526 South Elm Street, Greensboro. **Ongoing** - The gallery is a co-op of over 30 local artists exhibiting a wide range of art in different mediums. Paintings, sculpture, pottery, glass art, wood turning, fiber art and mixed media is for sale. Hours: Tue.-Thur., 11am-6pm; Fri., 11am-9pm; Sat., 11am-6pm; & Sun., 1-5pm. Contact: 336/790-8703 or at http://elementsgallery.wordpress.com).

JMR Sculptures, Gateway Center, 620 S. Elm Street, Suite 240, Greensboro. **Ongoing** - Featuring sculpture by Jay M Rotberg. Hours: Mon.-Fri., 10am-4:30pm or by appt. Contact: 336/389-0333 or at (www.jmrsculptures.com).

Lost & Found Gallery, 517 South Elm Street, Greensboro. **Ongoing** - Folk art, tribal art, textiles, and beads of the world. Hours: noon - 5:30pm, closed Wed. & Sun. Call ahead. Contact: 336/271-6954.

The Art Shop, 3900 W. Market St., Greensboro. **Ongoing** - Featuring works by Pino, Arvid, Park, Garmash, Sabzi, Hessam and others. We feature America's most collected artists. We also carry

sculpture by Frogman (Tim Cotterill), Leon Bronstein & Paige Bradley and fine art glass by Randy Strong, John McDonald & Scott Bayless. Thomas Kinkade; original oil paintings, limited edition prints and posters. Hours: Mon.-Fri., 10am-6pm; Tue. & Wed till 7pm & Sat. 10am-5pm. Contact: 336/855-8500 or at (www.artshopnc.com).

The Artery Gallery, 1711 Spring Garden Street, Greensboro. **Ongoing** - Featuring works by David Thomas, Roy Nydorf, Bruce Shores, Matthew Micca, Lisa Woods, Bill Clubb, Jack Stratton, Erin Stesch, Vito Ciccone, Alex Forsyth, Martin Dunn, and more. Hours: Mon.-Thur., 10am-6pm; Fri., 10am-5pm; & Sat., 10am-4pm. Contact: 336/274-9814 or at (www.arterygallery.com).

Tyler White O'Brien Gallery, 307 State Street, beside Cafe Pasta at the intersection of Golden Gate & State Streets, Greensboro. **Ongoing** - Tyler White Gallery offers residential and corporate fine art consulting services. We will outline a personalized budget plan for your specific needs. We also offer art research, presentation and installation services. Whether you are an avid art collector or a first time purchaser, Tyler White Gallery will guide you every step of the way. Hours: Mon.-Fri., 11am-5pm & Sat., 11am-4pm. Contact: call Kathy O'Brien (owner) at 336/279-1124 or at (www.tylerwhitegallery.com).

Uptown Artworks, 1007 Arnold Street, located between E. Wendover Ave. and E. Bessemer Ave., Greensboro. **Ongoing** - Primarily a "working artist studio," our 5,400 square foot facility has a large front gallery and currently houses 10 studios with room to build 7 more. Hours: Mon., 10am-4pm; Sat., 10am-2pm; Sun., 1-4pm or by appt. Contact: Joseph A. Wilkerson at 336/255-6345 or at (http://www.UptownArtworks.org).

William Mangum Watercolors/Carey-Mangum Gallery, 2182 Lawndale Dr., Greensboro. **Ongoing** - Original paintings, limited edition prints, miniature prints, posters and notecards by William Mangum. Hours: Mon.-Fri., 10am-5:30pm & Sat., 10am-3pm. Contact: 336/379-9200 or 800/887-5380.

Winter Light Gallery & Art Studios, 410 Blandwood Ave., corner of Blandwood Ave. and Spring Garden St., Greensboro. **Ongoing** - Featuring works by Kim Holleman, Vicki Johnson, Judy Meyler, Carol Meetze-Moates, Kathy Phillips, Steve Robinson, Carol Sams, Al-lie Scott, Phyllis Sharpe, Jane Smith, Stephanie Thomas, Steve Thomas and Jeanne Twilley. Hours: Mon., Tue., Thur., & Sat., 11am-2pm. Contact: 336/274-7372 or at (www.winterlight-artists.com).

Yew Tree Gallery, 604 S. Elm St., Greensboro. **Ongoing** - The gallery is a subsidiary of Ambleside Gallery, and is home to 16 painters who work in a variety of media and styles, including oils, acrylic, pastel, pen and ink, and watercolor. The gallery also features pottery. Hours: Wed.- Sat., 11am-5pm or by appt. Contact: 336/790-8703.

ALTERNATE ART SPACES - Greensboro
Bliss & Co. Salon, 238 S. Elm Street, Greensboro. **Ongoing** - Featuring an ever-changing exhibit of works by Charlotte and Erik Strom. Hours: Mon., 10am-6pm; Tue.-Fri., 10am-8pm; & Sat., 10am-6pm. Contact: 336/373-0299 or the Stroms at 336/691-8036 or e-mail to (charlotteart@hotmail.com).

Just Be, 352 S. Elm Street, Greensboro. **Ongoing** - Just Be is a specialty boutique filled with handmade and unique items like jewelry, handbags, apparel, home décor and much more. Shop in the store or online at. Hours: Mon.-Thur, 10am-6pm; Fri.&Sat., 10am-8pm; and Sun., 1-5pm. Contact: 336/274-2212 or at (www.onlyjustbe.com).

Greenville

City Art Gallery, 511 Red Banks Road, Greenville. **Ongoing** - The gallery features the works of established regional and national artists and craftspeople. The gallery offers an extensive collection of paintings, sculpture, ceramics, glass, drawings and photography. Hours: Mon.-Fri., 10am-6pm & Sat., 10am-4pm or by appt. Contact: 252/353-7000 or at (www.CityArtGreenville.com).

Strickland Art Gallery, 817 Dickinson Ave., Greenville. **Ongoing** - The gallery specializes in art by North Carolina artists including Francis Speight, Sarah Blakeslee, Hobson Pittman and Claude Howell. Contemporary NC artists are also shown. Hours: Mon.-Tue., 10am-6pm and by appt. Contact: Barbour Strickland 252/561-7980 or at (www.StricklandArtGallery.com).

Uptown Art Supply & Gallery, a division of UBE, 529 S Evans Street, Greenville. **Ongoing** - Featuring works in a variety of media by local and regional artists. Hours: Mon.-Fri., 9am-6pm and Sat., 10am-5pm. Contact: 252/752-0688 or at (www.uptownart.net).

Hendersonville - Flat Rock

A Show of Hands, Arts of the Appalachians, 305 N. Main Street, Hendersonville. **Ongoing** - Featuring works by Appalachian artists including, blown glass, wood carving, jewelry, wooden spoons, boxes, etc., and works by over 60 potters. Hours: Mon.-Sat., 10am-5pm & Sun., 1-5pm. Contact: 828/698-7673.

Carolina Mountain Artists, 444 N. Main Street, Hendersonville. **Ongoing** - Featuring works by regional and local artists in every media. Hours: Mon.-Sat., 10am-6pm & Sun., 1-5pm. Contact: 828/696-0707.

McCarter Gallery, 451 N. Main St., Hendersonville. **Ongoing** - Featuring the working studio-gallery of landscape artist Alan McCarter, specializing in his acrylic paintings of the beauty of Nature in the Blue Ridge and Great Smoky Mountains. Also, featuring a display of new works monthly. And, watercolors and acrylics of Robbin McCarter and art glass by Czech glass master Igor Muller and Canadian Robert Held. Hours Mon.-Sat., 10:30am-5:30pm & by appt. Contact: 828/698-7117 or at (www.mccarter-gallery.com).

Narnia Studios, 315 N. Main St., Hendersonville. **Ongoing** - Featuring works by local and regional artists in a variety of media. Hours: Mon.-Sat., 9:30am-6pm. Contact: 828/697-6393 or at (www.narniastudios.com).

Silver Fox Gallery, 508 N. Main Street, Hendersonville. **Ongoing** - Featuring contemporary fine art, hand-crafted artworks from the US only, from primarily regional artists. And, now Home Furnishings. Hours: Mon.-Thur., 10am-6pm; Fri., 10am-7pm; Sat., 10am-6pm; Sun., noon-5pm. Contact: 828/698-0601 or at (www.silverfoxonline.com).

The Conn-Artist Studios & Art Gallery, 611 Greenville Hwy. (S.Main/Rte 225), Atha Plaza, Hendersonville. **Ongoing** - Fine art landscapes by Barbara Hipwell, mixed media by Constance Vlahoulis and works by other area artists, including Vintage Finds Art Necklaces by Elizabeth. Hours: Wed. & Fri., 10am-5pm, & Sat., 10am-4pm, (most Tues & Thurs noon-5 -call first). Contact 828/329-2918 or at (www.Conn-Artist.com).

The Portrait Source, Hwy. 225 S., along "Little Rainbow Row", Flat Rock. **Ongoing** - Representing the nation's finest portrait artists and we help clients find the perfect artist for both families and the corporate world. We have expert sales consultants throughout the country. Visit our unique gallery where we have a continuing display of sample paintings. Hours: Mon.-Sat., 10am-4pm or by appt. Contact 800/586-6575 or at (www.theportraitsource.com).

High Point

J.Gallery at JH Adams Inn, 1108 North Main Street, High Point. **Ongoing** - Featuring works by artists from across the country with an emphasis on North Carolina artists. Hours: Mon.-Fri., 9am-5pm, but it is suggested you make an appointment. Contact: Julie Delgaudio at 336/8478672 or by e-mail at (phonefrnzy@aol.com).

JK Gallery, 342 North Wrenn Street, High Point. **Ongoing** - Featuring fine art photography by Jim Koch. Exhibiting black & white original silver gelatin prints and interpretations of color, architectural images, landscapes and portraits. Hours: M.-F., 9am-5pm. Contact: 336/883-2370 or at (http://www.jk-gallery.com/).

Kelly Brooke Pottery & Gallery, 709 W. Lexington Ave., inside of DeBeen Espresso, High Point. **Ongoing** - All of my work is wheel thrown and/or hand built from a porcelain clay body made right here in North Carolina. I use a centuries old style of surface decoration known as sprigging where I individually apply hand carved dragonflies or flowers to the leather hardened pots. Choose from mugs, bowls, vases, honey pots, teapots, plates, platters, etc. All of the pottery is food safe, microwave, and dishwasher safe and very durable. Hours: daily 8am-8pm. Contact: 336/889-2107 or at (www.kellybrookepottery.com).

Hillsborough

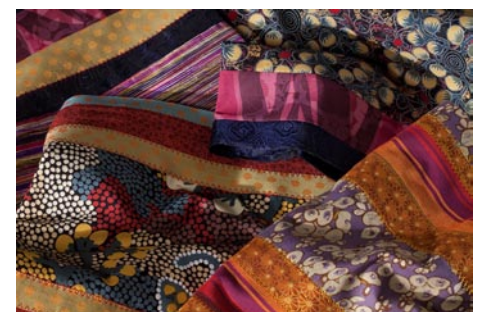
Downtown Hillsborough, Nov. 28, 6-9pm - "Last Fridays Art Walk." The Hillsborough Arts Council invites everyone to visit local galleries and artist studios in historic downtown Hillsborough including: The Gallery at the Hillsborough Arts Council, Melissa Designer Jewelry, ENO

Gallery, Hillsborough Artists Cooperative and The Skylight Gallery, Coldwell Banker Howard Perry and Walston, Cup A Joe, Callaway Jewelry & Spiral Studios, Sovero Art Gallery & Studio, Hillsborough Gallery of Arts, and The Depot at Hillsborough Station. For further info visit (www.lastfridaysartwalk.org).

Callaway Jewelry & Spiral Studios, 115 North Churton Street, Hillsborough. **Ongoing** - Offering beautiful handmade jewelry in sterling silver and gold by metalsmiths/designers Catharine Callaway and Jeannine Rogers. Hours: Mon.-Fri., 10am-6pm & Sat., 10am-4pm. Contact: 919/732-2013 or at (http://www.sterlingspirals.com/).

ENO Gallery, 100 South Churton Street, Hillsborough. **Lower Gallery, Through Nov. 23** - "Carolina Spirits," featuring works by Vicki Grant. Grant's solo exhibition includes evocative new spiritual and totemic sculptural wall pieces and vessels in clay and mixed media. **Ongoing** - The gallery represents exceptional contemporary emerging and established artists for both first time buyers and discerning collectors. ENO Gallery is a unique and intimate exhibition space. We offer work from artists of exceptional quality and dedication. Representing some of the most creative individuals from regional and national communities. Hours: Tue.-Thur., noon-6pm & Fri.-Sat., noon-8pm. Contact: 919/833-1415 or at (http://www.enogallery.net/).

Hillsborough Artists Cooperative and The Skylight Gallery, 102 West King Street, upstairs over Antonia's Restaurant, Hillsborough. **Ongoing** - Founded in 1992, featuring works by Jayne Bomberg and Tom Guthrie (The Studio of Collective Effervescence); Jennifer E. Miller, Andrea DeGette, Jacquelin Liggins, and Tiffney Marley. Hours: last Fri. of the month from 6-9pm or by appt. Contact: 919/929-2691 or 919/644-8637.



Work by Alice Levinson

Hillsborough Gallery of Arts, 121 N. Churton St., Suite 1-D, Hillsborough. **Through Nov. 9** - "Orange County Artists Guild Studio Tour Preview Show". See work by the artists involved in the 2014 open studio tour before deciding which studios to visit. **Nov. 11 - Jan. 3, 2015** - "The Art of Giving," featuring works for holiday giving by all our gallery artists. A reception will be held on Nov. 28, from 6-9pm. **Ongoing** - Founded in 2006, the gallery is owned by 22 artists and features painting, sculpture, photography, glass art, jewelry, turned wood, handcrafted furniture, pottery, mosaics & fiber art. Hours: 10am-6pm, Mon.-Thur.; 10am-8pm, Fri. & Sat.; and noon-4pm, Sun. Contact: 919/732-5001 or at (www.HillsboroughGallery.com).

Sovero Art Gallery & Studio, 121 North Churton Street, Suite 2-B, Hillsborough. **Ongoing** - Featuring jewelry and oil paintings by Peruvian artist David Sovero, who was born in 1971 in Lima, Peru. He graduated from the Peruvian National Arts College where he attended from 1990 -1996. He has a strong academic foundation. His Incan ancestral roots are saturated with thousands of years of Andean stylized figures. Hours: Mon.-Sat., 10am-7pm. Contact: 919/619-5616 or at (http://soveroart.com/).

Lenoir

Morning Song Gallery, at old Victorian house, 512 West Avenue, NW, across from the Lenoir Post Office and to the right of Baker Realty, Lenoir. **Ongoing** - Featuring works by local and regional artists. Hours: Call ahead. Contact: Margaret Carter Martine at 828/754-5693.

Lexington

The Bob Timberlake Gallery, 1714 E. Center Street Extension, Lexington. **Ongoing** - Featuring original artwork and reproductions by Bob Timberlake. Also furniture, gifts, apparel and collectibles. Hours: Mon.-Sat., 10am-5pm. Contact: 800-244-0095 or at (www.bobtimberlake.com).

Lincolnton

Gallery 27, 808 W. Hwy. 27, Lincolnton, NC. **Ongoing** - The gallery is the area's only working art gallery specializing in representing new and emerging artists. We also represents established artists. The space houses a formal fine art gal-

continued on Page 68