

SC Commercial Galleries

continued from Page 55

Miles Gallery, 208 S. Magnolia St., Summerville. **Ongoing** - Whimsicalities for eclectic personalities. Fun art from local, regional, and international artists. Handmade jewelry, paintings, folk art, pottery and much more. Hours: Wed.-Sat., 10am-3pm. Contact: 843/851-1182 or at (www.milesgallery.us).

People, Places, & Quilts, 129 W. Richardson Avenue, Summerville. **Ongoing** - Featuring fabric, books, patterns, notions, quilts and Folk Art. Hours: Mon.-Fri., 10am-5:30pm and Sat., 10am-5pm. Contact: 843/937-9333 or at (www.ppquilts.com).

Tea Farm Cottage, 808 N. Cedar St., Summerville. **Ongoing** - Featuring works by the largest group of artisans and crafters in the tri-county area with 90 sellers under one roof, plus locally-made foods and antiques. Monthly arts and crafts shows on our 1/2 acre property. Hours: Mon.-Sat., 11am-5pm. Contact: 843/871-1113.

The Finishing Touch, 140-A West Richardson Ave., Summerville. **Ongoing** - Featuring original art, fine crafts, framing and interior design by appt. Hours: Mon.-Fri., 10am-6pm & Sat., 10am-5pm. Contact: 843/873-8212.

Treasure the View - Sand Carved Glass, 129 1/2 W. Richardson Ave., Summerville. **Ongoing** - Unique sand carved glass sculptures created by renowned artist Lex Melfi. Each piece is a one-of-a-kind masterpiece produced by cutting images into glass using high-pressured sand. Hours: by appt. only. Contact: 843/875-7822 or at (www.lexmelfi.com).

Sumter

Elephant Ear Gallery Fine Arts and Creations, 672 Bultman Dr., Sumter. **Ongoing** - Featuring works by 23 artists offering every medium from watercolor to angora grown rabbits producing fur for spinning. Hours: Mon.-Sat., 10am-6pm. Contact: 803/773-2268.

NC Institutional Galleries

Aberdeen

The Exchange Street Gallery of Fine Art, 129 Exchange Street, in the old Aberdeen Rockfish Railroad storage terminal, Aberdeen. **Ongoing** - The Artist's League of the Sandhills currently houses 35 artists-in-residence studios and offers classes by local professional artists and workshops by nationally known artists. Hours: Mon.-Sat., noon-3pm. Contact: 910/944-3979, or at (www.artistleague.org).

Alamance County

BAL Gallery, Holly Hill Mall and Business Center, 309 Huffman Mill Rd., Exit 141 off of I85/I40, Burlington. **Ongoing** - Since the beginning of Burlington Artists League in 1972, we have grown to represent many local artists in our immediate area. BAL's express purpose is to promote and elevate the area artists and their fine art spirit in Burlington, NC, and surrounding areas, thereby creating outlets for the artists and encouraging their continuing efforts to improve and create more art work. Along with wall art and bin reproductions, the BAL Artists Gallery also includes 3-D art such as sculptures and pottery. Hours: Mon.-Fri., noon-8pm; Sat., 10am-9pm, & Sun. for special events. Contact: 336-584-3005 or at (<http://balartists.com/joomla/>).

1873 Capt. James & Emma Holt White House, 213 South Main Street, 2 1/2 blocks off I85/40, exit#147, Graham. Home of the Alamance County Arts Council. **Sisters Galleries and Suntrust Gallery**, Nov. 21 - Dec. 24 - "Christmas at Captains White's". **Ongoing** - We are committed to shaping the cultural identity of Alamance County by making art a tangible presence in the lives of its citizens. We strive to enhance the quality of life by engaging people in a diverse array of art through the delivery of programming and education, and through the provision of facilities, advocacy, promotion, and funding. **Ongoing** - Picasso's Gift Shop, located in the Captain White House, promises unique finds of local, regional, and international art. The beautiful arts and craft items sold in the store help support the artist in the community. Featuring a wide variety of art, pottery and glass. Admission: free. Hours: Mon.-Sat., 9am-5pm. Contact: 336/226-4495 or at (www.artsalamance.com).

Paramount Theater, 128 East Front Street, Burlington. **Through Nov. 16** - Featuring works by Kathy Alderman and Elaine Pelkey Herrick. **Nov. 18 - Jan. 12, 2016** - Featuring works by James and Carolyn Teague. Hours: Mon.-Sat., noon-3pm. Contact: call the Theatre at 336/222-8497 or contact the Alamance County Arts Council at 336-226-4495 or at (<http://www.artsalamance.com/>).

Albemarle

Falling Rivers Gallery, 119 West Main St., next to Starnes jewelers, Albemarle. **Through Nov. 5** - "Stanly Arts Guild's Annual Members Show". **Ongoing** - The gallery is a cooperative venue of the Stanly Arts Guild. Member staffed, this gallery offers the very best in local art and crafts including oil and watercolor, photography, pottery and ceramic art, jewelry, native American art, gourd sculpture and much more. Hours: Tue.-Fri., 10am-5pm; Thur. till 6:30pm & Sat., 10am-4pm. Contact: 704/983-4278 or at (www.fallingriversgallery.com).

Asheboro

Sara Smith Self Gallery, W.H. Moring, Jr. Arts Center, 123 Sunset Avenue, Asheboro. **Nov. 3 - 24** - "Josh Floyd". A reception will be held on Nov. 3, beginning at 5:30pm. A Lunch and Learn will be held on Nov. 24, from noon-1pm. **Dec. 1 - 22** - "Artists' Hang Up". A reception will be held on Dec. 1, beginning at 5:30pm. Hours: Mon.-Fri., 10am-5pm & Sat., 10am-2pm. Contact: 336/629-0399 or at (www.randolpharts-guild.com).

Asheville Area



Work by William Wegman

Asheville Art Museum, 2 South Pack Square at Pack Place, Asheville. **Through Dec. 27** - "Man-Made: Contemporary Male Quilters," featuring an exhibition that examines the unique aesthetics and techniques that men bring to a craft long-associated with feminine arts and labor. A reception will be held on July 3, from 5-8pm. With backgrounds in contemporary visual art, media and fashion, the eight artists featured in the exhibition have been identified as leading makers whose quilts act as non-functional art pieces. Though quilting is culturally viewed as "women's work," men have participated in quilting since the early 1800s in both professional and domestic capacity. The art quilt movement developed in the 1980s as a practice akin to painting, led by professional artists rather than domestic makers. **Through Jan. 24, 2016** - "Cubism and Other-isms," featuring an exhibition of the work of renowned artist William Wegman. In her essay for the artist's 2006 retrospective exhibition catalogue, Joan Simon describes William Wegman as a "pioneer video-maker, wry conceptualist, performer, photographer, painter, found-object finder, draftsman and writer. Wegman is typical of his generation in his multimedia reach but unusual in his audiences. He is not only held in critical esteem within the international art world but also beloved by the general public.... He is the 'man with the dogs,' whose handsome troupe of Weimaraners collaborates with him in theatrical tableaux and the telling of tales. **Ongoing** - "Sol LeWitt: Creating Place, Wall Drawing #618." Sol LeWitt (1928-2007) was born in Hartford, Connecticut. As a pioneer of conceptual art, he has had a major influence on 20th century American art. **Ongoing** - "Community: Sharon Loudon". The second work in the Museum's Artworks Project Space, Sharon Loudon's in-

novative installation Community is a continued conversation based on a series of work that she started in 2013 that traces its path through installation, animation, painting and drawing. In each genre, her gestures create an implication of dance — movement and energy — transposed against the resistance of fixed squares and rectangles of color. Admission: Yes. Hours: Tue.-Sat., 10am-5pm; Fri. till 8pm & Sun., 1-5pm. Contact: 828/253-3227 or at (www.ashevilleart.org).

Asheville Gallery of Art, Ltd., 16 College Street, Asheville. **Nov. 1 - 30** - "Small Works". Eighteen of the gallery's 30 artists will display small works with dimensions less than 12 by 12 inches. A reception will be held on Nov. 6, from 5-8pm. A wide range of subject matter, media, and styles will be represented. Asheville Gallery of Art hopes that art lovers will not only enjoy the show, but will use it to purchase affordable (and packable) works of art by local artists for holiday gift giving. **Ongoing** - Featuring original works of art by 28 local artists in oils, acrylics, watercolor, pastel, encaustic, and prints. Hours: Mon.-Sat., 10am-5:30pm and first Fri. of the month till 8pm. Contact: 828/251-5796 or at (www.ashevillegallery-of-art.com).

Black Mountain College Museum + Arts Center, 56 Broadway, Asheville. **Through Dec. 31** - "Robert Motherwell: A Centenary Exhibition," featuring a celebrating the 100th anniversary of the famed American artist's birthday. The exhibition features collages, paintings and prints highlighting several of the artist's hallmark styles and periods, including the Elegies, the Lyric Suites, and the Open Series. **Ongoing** - An exhibition space dedicated to exploring the history and legacy of the world's most acclaimed experimental educational community, Black Mountain College. Hours: Wed.-Sat., noon-4pm or by appt. Contact: 828/350-8484 or at (www.blackmountaincollege.org).

Blowers Gallery, main floor of UNCA's Ramsey Library, Asheville. **Through Nov. 6** - "From the Edge," an exhibition of images of performance design pieces reflecting society and politics between 2007 and 2011. The exhibit has attracted audiences all over the world since debuting in Prague and showing in New York City, Pittsburgh, Long Beach, California and Moscow, before being brought to Asheville by Igor Roussanoff of UNC Asheville's drama faculty. Hours: regular library hours. Contact: 828/251-6546.

Flood Gallery Fine Arts Center, 109 Roberts St., Asheville. **The Courtyard Gallery**, **Through Nov. 30** - "10th annual Anything Goes, Everything Shows Mail Art Show". "Anything Goes—Everything Shows" is just that, an uncensored free style mail art show. Mail art is art that uses the postal system as a medium. Mail artists typically exchange ephemera in the form of illustrated letters; zines; rubberstamped, decorated, or illustrated envelopes; artist trading cards; postcards; artiststamps; faux postage; mail-interviews; naked mail; friendship books, decos and three-dimensional objects. **Ongoing** - Dedicated to advancing the careers of emerging and mid career artists, as well as educating the public and furthering the understanding of contemporary art and its importance within the community and beyond. Hours: Mon.-Sat., 10am-4pm. Contact: 828/255-0066 or at (www.philmechanicstudios.com).

Guild Crafts of Southern Highland Craft Guild, 930 Tunnel Road, Asheville. **Ongoing** - Work by members of the Southern Highland Craft Guild in various media. Hours: Mon.-Sat., 9:30am-5pm. Contact: 828/298-7903.

NC Homespun Museum, next to Grovewood Gallery, at Grove Park Inn, 111 Grovewood Road, Asheville. **Ongoing** - This museum presents a historical overview of Biltmore Industries, an Arts and Crafts enterprise once renowned for its hand-loomed fabrics. The museum showcases memorabilia including photographs, letters, artifacts, woven samples and tailored suits from the active years of the industry. Located on the historic Grovewood grounds, adjacent to The Omni Grove Park Inn. Admission is free (donations appreciated). Hours: Mon.-Sat., 10am-5pm, & Sun., 11am-5pm. Contact: 828/253-7651.

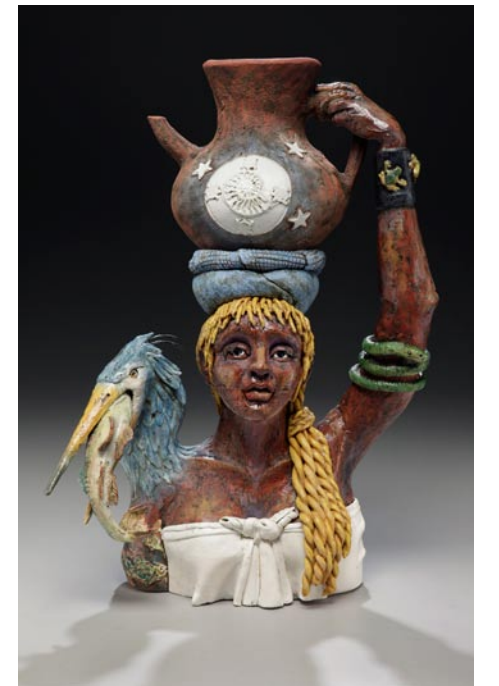
Odyssey Co-Op Gallery, 238 Clingman Avenue, Asheville. **Ongoing** - A cooperative consisting of 24 professional ceramic artists in the Heart of the River Arts District. Participating artists include: Scott Cameron Bell, Reiko Miyagi, Mary Jimenez, Adele Macy, Kat McIver, Blue Fire MacMahon, Mary Jane Findley, Chiwa Clark, Ginger Graziano, Margaret Kleiber, Joanna Carroll, Mark Harmon, Anne Jerman, Isis Dudek, and Elaine Lacy. Hours: Tue.-Sun., 11am-5pm. Contact: 828/285-9700 or at (<https://www.facebook.com/odysseycoop-gallery>).

S. Tucker Cooke Gallery, UNC-Asheville, 1st floor, Owen Hall, Asheville. **Nov. 3 - 17** - "Looking at Appalachia," a national traveling photo exhibition. The exhibition, conceived by

documentary photographer Roger May during the 50th anniversary of the 1964 declaration of a federal War On Poverty, establishes a visual counterpoint to the stereotyped images of the region. Appalachia became the visual focal point of the nation's attention to poverty, through images often drawn from the poorest areas, which came to represent the entire region. "Looking at Appalachia" has been featured in coverage by "The New York Times", National Geographic's "Proof: Picture Series" blog, "Global Citizen", West Virginia Public Broadcasting and elsewhere. Hours: Mon.-Fri., 9am-6pm. Contact: call UNCA's Art Department at 828/251-6559 or at (<http://art.unca.edu/>).

Southern Highland Craft Gallery, 26 Lodge Street, former Biltmore Oteen Bank Building in Biltmore Village, Asheville. **Ongoing** - Featuring a wide range of work by members of the Southern Highland Craft Guild, including: pottery, glass, wood, jewelry, fiber, metal, paper, mixed media and natural materials. Hours: Mon.-Sat., 10am-7pm and Sun. noon-5pm. Contact: 828-277-6222 or at (www.craftguild.org).

The Center for Craft, Creativity and Design, 67 Broadway, Asheville. **Benchmark Gallery**, **Through Jan. 9, 2016** - "Made in WNC," is the first exhibition to examine how studios in Western North Carolina are participating in the international designer-maker movement. Curated and organized by The Center for Craft, Creativity & Design's Assistant Director Marilyn Zapf. The exhibition features work by twenty-four regional textile, ceramic, and furniture studios and four regional artists. Hours: Tue.-Sat., 10am-6pm. Contact: call 828/785-1357 or at (www.craftcreativitydesign.org).



Work by Jenny Mastin

The Folk Art Center of the Southern Highland Craft Guild, Blue Ridge Parkway Milepost 382, Asheville. **Main Gallery**, **Through Jan. 17, 2016** - "New Members Show," featuring the work of artists who became members of the Guild between Fall 2013 – Spring 2015, including: Linda Azar, Dorothy Baker, JohnFrank Brannon, Alan Carter, Erin Castellan, Lorraine Cathey, Karen Collis, Joni Davis, Rachelle Davis, Robin Ford, Bridget Fox, Ursula Goebels-Ellis, Nancy Graham, Erin Keane, Jenny Mastin, Brenna McBroom, Tracey Palmer, Diana Pittis, Joey Sheehan, Kim Thompson, Alan "Doc" Welty, and Hayden Wilson. **Permanent Collection Gallery**, **Ongoing** - "Craft Traditions: The Southern Highland Craft Guild Collection". The Guild's Permanent Collection is comprised of approximately 2400 craft objects and dates from the late 19th century to present. Beginning with a donation from Frances Goodrich in 1931, the Permanent Collection serves the Guild's mission of craft conservation and education. This new installation will feature over 200 works that highlight our holdings in traditional art: woodcarving, pottery, dolls, basketry, weavings and furniture. The subject of this ongoing exhibition is craft history – that of the Southern Highland Craft Guild and the Studio Craft Movement. **Focus Gallery**, **Through Nov. 3** - "Indulging in Fancy". Featuring works by Sue Grier, Kathleen Doyle, Tom Reardon, Amy Goldstein-Rice, Marsha Heatwole, Lorraine Cathey, and Breanna Rockstadt Kincaid. Hours: daily from 9am-6pm. Contact: 828/298-7928 or at (www.southernhighlandguild.org).

YMI Gallery, YMI Cultural Center, 39 S. Market Street @ Eagle Street, Asheville. **Ongoing** - "In the Spirit of Africa". Featuring traditional and contemporary African masks, figurative woodcarvings, beadwork, jewelry, and textiles. Discover the purpose of mask and sculptures, which reflect African ancestral heritage and learn to appreciate symbolism and abstraction in African art. **YMI Conference Room**, **Ongoing** - "Forebears & Trailblazers: Asheville's African American Leaders, 1800s – 1900s". The permanent exhibit offers a pictorial history of African-Americans from

continued on Page 57