

# SC Commercial Galleries

continued from Page 57

only. Contact: 843/723-5977 or at ([www.halseyfoundation.org](http://www.halseyfoundation.org)).

**Nina Liu and Friends**, 24 State St., Charleston. "Celebrating its 25th Anniversary". **Through Jan. 20** - Featuring an exhibit of works by Aggie Zed. **Ongoing** - Offering a group show by gallery artists everyday. Hours: Mon.-Sat., 10am-5pm & Sun., noon-5pm. Contact: 843/722-2724.

**One of a Kind Art & Fine Craft Gallery**, 74 N. Market Street, Charleston. **Ongoing** - Featuring unique arts and crafts from over 400 American artists, including many local artisans. Hours: Sun.-Thur., 10am-10pm & Fri.&Sat, 10-11pm. Contact: 843/534-1774.

**People, Places, & Quilts**, 1 Henrietta Street, Charleston. **Ongoing** - Featuring fabric, books, patterns, notions, quilts and Folk Art. Hours: Mon.-Sat., 10am-5pm. Contact: 843/937-9333 or at ([www.ppquilts.com](http://www.ppquilts.com)).

**Photographics - Portrait Photography & Art Gallery**, 458 Freshfields Dr., in the Freshfields Village, Johns Island. **Ongoing** - Representing painters and photographers who exemplify the greatest ability to evoke a mood or sensory impression of a chosen subject matter. This subject matter varies and includes landscapes and still-life depictions of Lowcountry scenes as well as themes and experiences from the travels of its artists. The gallery features original works in oil, watercolor, gouache, mixed-media and fine-art photography. Representing national artists: Billie Sumner, Fred Jamar, Tammy Papa, Pam Cohen, Vickie Ellis, Aija Sterns, Elizabeth Droszski, Sharlyne Duffy, and Michael Cyra. Hours: Mon.-Sat., 10am-6pm or by appt. Contact: 843/768-3030 or at ([www.kiawahislandphoto.com](http://www.kiawahislandphoto.com)).

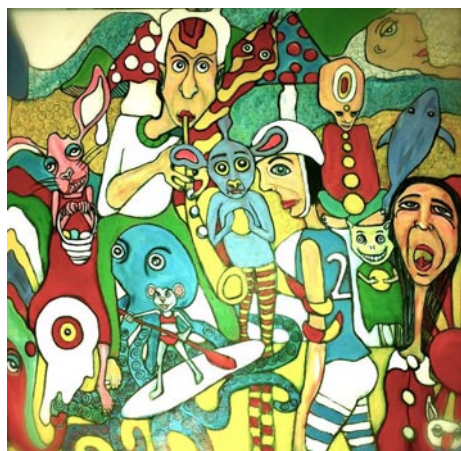
**Pink House Gallery**, 17 Chalmers Street, Charleston. **Ongoing** - Florals, landscapes, wildlife and a full line of Charleston scenes, featuring works by Alice S. Grimsley, Nancy W. Rushing, Audrey D. Price, Bruce W. Krucke, and Alexandria H. Bennington. Also featuring works by Ravenel Gaillard. Hours: Mon.-Sat., 10am-5pm. Contact: 843/723-3608 or at (<http://pinkhousegallery.tripod.com/>).

**Raymond Clark Gallery**, 307 King Street, Charleston. **Ongoing** - Featuring the works of over 100 regional & national artists working in every medium. Hours: Mon.-Sat., 10am-6pm. Contact: 843/723-7555.

**Rebekah Jacobs Gallery**, 169-B King St., Charleston. **Ongoing** - Focusing on Southern artists and photographers who have powerful visions of the land of their birth supported by an advanced mastery of their media. The gallery maintains an accelerated exhibition schedule, non-media specific, which features one-person and group shows throughout the year. Hours: Tue.-Sat., 10am-5:30pm or by appt. Contact: 843/937-9222 or at ([www.rebekahjacobsgallery.com](http://www.rebekahjacobsgallery.com)).

**Reinert LePrince Fine Art**, 179 King Street, Charleston. **Ongoing** - Featuring works by local painters Rick Reinert and Kevin LePrince with works by sculptor David Turner. Hours: daily from 10am-5pm. Contact: call 843/793-4765 or at ([www.reinertleprince.com](http://www.reinertleprince.com)).

**Rhett Thurman Studio**, 241 King St., Charleston. **Ongoing** - Featuring original works by Rhett Thurman in conjunction with The Sylvan Gallery. Hours: by appt. only. Contact: 843/577-6066.



Work by Farrah Hoffmire

**Rick Rhodes Photography and Imaging, LLC.**, 1842 Belgrade Ave., West of the Ashley, Charleston. **Jan. 1 - 31** - "Tiny Illustrations," featuring works by Marcus Amaker, Erin Banks, Tim Banks, Baird Hoffmire, and Farrah Hoffmire. A reception will be held on Jan. 6, from 6-10pm. Hours: Mon.-Fri., 9am-5:30pm. Contact: 843/766-7625 or at ([www.rickrhodesphotography.com](http://www.rickrhodesphotography.com)).

**Robert Lange Studios**, 2 Queen St., Charleston. **Ongoing** - Featuring works by Ali Cavanaugh, Megan Aline, Robert Lange, Nathan Durfee, Kerry Brooks, Jessica Dunegan, Fred Jamar, Michael Moran, Amy Lind, Adam Hall, Joshua Flint, Sean Clancy, and JB Boyd. Hours: Mon.-Sun., 11am-7pm. Contact: 843/805-8052 or at ([www.robertlangestudios.com](http://www.robertlangestudios.com)).

**Smith-Killian Fine Art**, 9 Queen Street, corner of Queen & State Streets, Charleston. **Ongoing** - Featuring original works by Betty Anglin Smith, Jennifer Smith Rogers, Tripp Smith, Shannon Smith, Kim English, Susan Romaine, Don Stone, NA and Darrell Davis, sculptor. Hours: Mon.-Sat., 10am-5pm & Sun. 1-5pm. Contact: 843/853-0708 or at ([www.smithkillian.com](http://www.smithkillian.com)).

**Spencer Art Gallery I**, 55 Broad St., in historic French Quarter District, Charleston. **Ongoing** - Offering the works of over 35 award winning artists in a delightfully eclectic mix of subject matter, styles, and media. Hours: Mon.-Sat., 10am-5pm. Contact: 843/722-6854 or at ([www.spencerartgallery.com](http://www.spencerartgallery.com)).

**Spencer Art Gallery II**, 57 Broad St., in historic French Quarter District, Charleston. **Ongoing** - Offering the works of over 35 award winning artists in a delightfully eclectic mix of subject matter, styles, and media. Hours: Mon.-Sat., 10am-5pm. Contact: 843/723-4482 or at ([www.spencerartgallery.com](http://www.spencerartgallery.com)).

**The Audubon Gallery**, 190 King St., Charleston. **Ongoing** - "Charleston's only gallery for the Natural History and sporting art enthusiast!" Locally owned, the gallery specializes in the golden age of natural history (1700-1900), emphasizing John James Audubon, one of Charleston's most highly regarded artist. Here, you will find a tour-de-force of Audubon's "Birds of America" as well as other highly acclaimed natural history art. A sportman's paradise with a large selection of antique wildfowl decoys, collectibles, nostalgic paintings, prints of days afield and favorite hunting dogs. We offer museum-quality framing and conservation services for works of art on paper to protect and present your most treasured pieces. Hours: Mon.-Sat., 10am-5pm or by appt. Contact: 843/853-1100 or at ([www.audubonart.com](http://www.audubonart.com)).

**The Brizard Studio**, one King Street, Suite 404, Charleston. **Ongoing** - Original fine oil paintings by Robin Brizard, award-winning impressionist artist. Hours: by appt. only, call 843/577-0964.

**The Charleston Renaissance Gallery**, 103 Church Street, at St. Michael's Alley, Charleston. **Ongoing** - Showcasing nineteenth century oil paintings, works on paper and sculpture of the American South. Hours: Mon.-Sat., 10am-5pm. Contact: 843/723-0025 or at ([www.fineartsouth.com](http://www.fineartsouth.com)).

**The John Carroll Doyle Art Gallery**, 125 Church St., Charleston. **Ongoing** - Featuring works by John Carroll Doyle and Margret Peterson. Hours: Tue.-Sat., 10am-5pm. Contact: 843/577-7344 or at ([www.johncarloyle.com](http://www.johncarloyle.com)).

**The John M. Dunnan Gallery**, 121 Church Street, Charleston. **Ongoing** - Featuring works by John M. Dunnan. Including stylistic gesture drawings, paintings and sculpture. Hours: Mon.-Sat., 10am-5pm. Contact: 843/720-7425 or at ([www.johndunnan.com](http://www.johndunnan.com)).

**The Silver Puffin**, 329 King Street, across from Bob Ellis Shoes, Charleston. **Ongoing** - Featuring unique American and International arts and crafts with emphasis on the work of local artisans. Hours: daily, 10am-6pm. Contact: 843/723-7900 or at ([www.silverpuffin.com](http://www.silverpuffin.com)).

**The Sylvan Gallery**, 171 King Street, Charleston. **Ongoing** - Featuring 20th & 21st Century traditional and representational paintings and sculpture. Featuring works by: Cyrus Afsary, Carolyn Anderson, William "Bill" Berra, Scott Burdick, Nancy Bush, Frank DiVita, Glenna Goodacre, John Austin Hanna, Doug Higgins, William Kalwick, Ramon Kelley, Linda Kyser-Smith, Kent Lemon, Huihan Liu, Sue Lyon, Karol Mack, Eric Michaels, Anthony Palliser, Kate Palmer, Joan Potter, W. Stanley "Sandy" Proctor, Paul Strisik, Sonya Terpening, Barry Thomas, Rhett Thurman, Curt Walters, and Wayne E. Wolfe. Hours: Mon.-Fri., 9am-5pm; Sat., 10am-5pm; & Sun., 11am-4pm. Contact: 843/722-2172 or at ([www.thesylvan-gallery.com](http://www.thesylvan-gallery.com)).

**The Wells Gallery**, 125 Meeting St., Charleston. **Ongoing** - Featuring original works by regular gallery artists: Marty Whaley Adams, David Ballew, Joseph Cave, Dan Cooper, Claire Farrell, Bill Gallen, Gary Gowans, Gary Grier, David

Goldhagen, Russell Gordon, Glenn Harrington, E.B. Lewis, Whitney Krieb, Kate Long, Brad Lorbach, George Pate, Sue Stewart, Karen Larson Turner, Alex Zapata. Hours - Mon.-Sat., 10am-6pm. Contact: 843/853-3233 or at ([www.wellsgallery.com](http://www.wellsgallery.com)).

**Wells Gallery at The Sanctuary**, at The Sanctuary on Kiawah Island, about 30 minutes from Charleston, in Kiawah's newest and most luxurious resort. **Ongoing** - Featuring a selection of paintings, jewelry and sculptures of some of the Lowcountry's finest artists, Betty Anglin Smith, Shannon Smith, Jennifer Smith Rogers, George Pate, Glenn Harrington, Gary Gowans, Karen Larson Turner, Kim English, Felice Killian, Grainger McKoy and Darrell Davis. Hours: Mon.-Sat., 10am-8pm & Sun., 10am-6pm. Contact: 843/576-1290 or at ([www.wellsgallery.com](http://www.wellsgallery.com)).

## Columbia Area

**Main Street**, downtown Columbia. **Jan. 5, 6-9pm** - "First Thursday on Main". This monthly event held on the 1st Thursday of the month features art presentation - up and down Main Street. Some of the participants include: S&S Art Supply, Tapp's Arts Center, Columbia Museum of Art, Anastasia & Friends Art Gallery, Frame of Mind, Artists in the Arcade, and more. For further information contact Mark Plessinger of Frame of Mind at 803/988-1065, e-mail at ([frameofmind@sc.rr.com](mailto:frameofmind@sc.rr.com)) or Lorri-Ann Carter of CarterTodd & Associates at 803/779-4005, e-mail at ([la@cartertodd.com](mailto:la@cartertodd.com)).

**Alicia Leeke Fine Art Studio**, 3821 Edinburg Rd., Columbia. **Ongoing** - Featuring original acrylic cityscapes, abstracts, monotypes, and drawings on canvas and fiber. Giclee's on canvas and paper also available. Hours: by appt. only. Contact: 803/429-5456 or at ([www.alicialeeke.com](http://www.alicialeeke.com)).

**Anastasia & Friends Art Gallery**, 1534 Main Street, front of building that Free Times is in across the street from the Columbia Museum of Art, Columbia. **Jan. 5 - Feb. 23** - "The Surreal Show," features sculpture, paintings, mixed media, photography and textiles by Natalie Brown, Anastasia Chernoff, Janice Dittmar, Nathan Fiveash, Libby Gamble, Michelle Rogers, Kirill Simin, Lyra Stephens and Lindsay Wiggins. A reception will be held on Jan. 5, from 6-9pm, featuring a performance by Alternacirque and Dr. G. Fredric Mau. Hours: Mon.-Fri., 9am-5pm or by appt. Contact: 803/665-6902 or e-mail at ([stasia1825@aol.com](mailto:stasia1825@aol.com)).

**ArtCan Studio & Gallery**, 108 Beaufort Street, Chapin. **Ongoing** - Featuring original paintings, handpainted furnishing, and limited and open edition lithographs by Judy Bolton Jarrett. Hours: Thur.& Fri., noon-5:30pm; Sat., noon-4pm or by appt.(call before coming). Contact: 803/345-6588 or at ([www.judyjarrettgallery.com](http://www.judyjarrettgallery.com)).

**ART + CAYCE Gallery**, 1329 State St., opposite Brookland Cayce High School, Cayce. **Ongoing** - Our gallery hosts local artists from South Carolina showing works in various media. Every show is different and unique and displays work from abstract painting to mixed media assemblages. Currently we are displaying sculpture by Robin Jones and mixed media assemblage/painting by Andrew Norton Webber. One can expect to visit the gallery during the week and experience a calm atmosphere with engaging pieces. Hours: Mon.-Thur., 1-4pm; Sat., 1-4pm & by appt. Contact: 803/765-0838 or at (<http://artpluscayce.blogspot.com/>).

**Art Studios in the Historic Arcade Building**, 1332 Main Street, at the corner of Washington and Main Streets two blocks from the Statehouse, Columbia. **Ongoing** - Including works by Eileen Blyth(mixed media); Sylvia Potts and Richard Lund (sculptors); Page Morris, Beth West, Suzy Shealy, Walton Selig, Martha Thomas, Jan Swanson, Tish Lowe, Bettye Rivers, Debra Paysinger, Meredith Paysinger, McKenzie Seay and Leah Wimberly (painters). All studios on the main level have glass-fronts so that visitors can see art and the artists at work. Studio hours vary with each artist. Building hours: Mon.-Fri., 8am-6pm or by appt. Contact: Jan Swanson at 803/360-6794, e-mail to ([busstop2711@aol.com](mailto:busstop2711@aol.com)) or on Facebook.

**Artsy Fartsy Art Gallery and Coffee Bar**, 906 Knox Abbott Drive, Cayce. **Ongoing** - Featuring art by local artists and cafe and wine bar. We also have MIND GRAVY which is our poetry night every wed 8-10pm. Hours: Wed.-Sat., 7pm-2am. Contact: 803/7084731 or e-mail at ([Ladyartnsoul@gmail.com](mailto:Ladyartnsoul@gmail.com)).

**Bella Vista Art & Framing**, 705 Gervais St., downstairs of City Market Antiques, Columbia. **Ongoing** - Featuring original works of art of varied national artists, regional artists, vintage art, antiquarian engravings and etchings, original photography. Also a Mort Kunstler dealer

and large selection of SC artists, giclees, and limited edition prints. And, offering a full service custom framing shop featuring professional, quality framing at below industry prices. Hours: Tue.-Sat., 10am-5:30pm. Contact: 803/765-0808 or e-mail at ([bellavistaart@bellsouth.net](mailto:bellavistaart@bellsouth.net)).

**Carol Saunders Gallery**, 922 Gervais St., Columbia. **Ongoing** - Featuring fine art objects and works by local artists, including Mana Hewitt, Stephen Chesley, Carol Pittman, Mike Williams, Laura Spong, Heidi Darr-Hope, Judy Hubbard, Jeri Burdick, Clay Burnett, and Eddie Bryan. Hours: M-F, 10am-5:30pm; Sat., 11am-5pm. Contact: 803/256-3046.



Work by Brian Rego

**City Art**, 1224 Lincoln Street, Columbia. **Jan. 26 - Mar. 17** - "Brian Rego: Recent Oil Paintings". Rego is currently an Adjunct Professor of Figure Drawing and Foundations at the University of South Carolina and an Adjunct Professor of Figure Painting and Figure Drawing at Benedict College in Columbia, SC. A reception will be held on Jan. 26, from 6-8pm. **Ongoing** - Featuring works by Jane Aldridge, Jim Arendt, Randolph New Armstrong, Penny Baskin, Jo Dean Bauknight, Robbie Bell, Kimberly Betchman, Tarleton Blackwell, Angela Bradburn, Betty Bramlett, Kathy Casey, Yvette Cummings, Anne Cunningham, Ray Davenport, Bob Doster, Claire Farrell, Amy Fichter, Tim Floyd, Michael Fowler, Harriet Goode, Vanessa Grubbs, Amy Goldstein-Rice, Randy Hanna, Shelley Hehenberger, Bill Jackson, Jan Kransberger, Robert Lyon, Esther Melton, Doug McAbee, Fred McElveen, Dale McEntire, Randall McKissick, Max Miller, Tariq Mix, Marge Loudon Moody, Blake Morgan, Bruce Nellsmith, Heather Noe, Nicholas Oleszczuk, Ann Hightower-Patterson, Leslie Pierce, Scotty Peek, Carol Pittman, Sylvia Ady-Potts, Alex Powers, Brian Rego, May Reisz, Tom Risser, Peggy Rivers, Cindy Saad, Sara Schneckloth, Ed Shmunes, Sherry Silvers, J. Michael Simpson, Robin Smith, Wanda Steppe, Tom Supensky, Nancy Thompson, Tom Thompson, K. Wayne Thornley, Teri Tynes, Wendyth Wells, Sam Wilkins, Rod Wimer, Susan Nuttall, Rena MacQueen, and Katarina Zaric. This represents a rare opportunity to view a very wide range of acclaimed SC artists at one time. City Art features three distinct gallery spaces. A complete fine artists supply store is located on the lower level. Fine custom designer framing is available at City Art. In addition the Gallery is often host to a variety of events hosted by rental clients. City Art is a wonderful space to enjoy and purchase original art, art supplies, fine framing, take art classes and have wedding receptions, etc. Hours: Mon.-Thur., 10am-6pm; Fri., 10am-5pm, & Sat., 11am-3pm. Contact: 803/252-3613 or at ([www.cityartonline.com](http://www.cityartonline.com)).

**Finleaf Gallery**, 2323 Devine Street, Columbia. **Ongoing** - Featuring original artwork by local and regional artists, whose work has been hand-selected for display in our gallery. Hours: Tue.-Fri., 10am-5:30pm & Sat., 11am-3pm. Contact: 803/254-8327 or at ([www.finleaf.com](http://www.finleaf.com)).

**Fontenay Fine Art, Antiques and Oriental Rugs**, 2716 Devine St., Columbia. **Ongoing** - Featuring antique and contemporary fine art in our gallery of fine rugs and antiques. We now offer full-service framing. Hours: Tue.-Fri., noon-5pm & Sat., 10am-6pm. Contact: 803/254-1352 or at ([www.fontenayondevine.blogspot.com](http://www.fontenayondevine.blogspot.com)).

**Frameland**, 619 Harden St., (Five Points, next to Grouchos Deli), Columbia. **Ongoing** - Featuring local art in Five Points, close to downtown. USC and college art, diploma frames, Columbia and vintage SC prints. Hours: Mon.-Fri., 10am-5:30pm & Sat., 10am-3:30pm. Contact: 803/771-4451.

**Havens Framemakers and Gallery**, 1616 Gervais St., Columbia. **Ongoing** - Exhibiting paintings by local artists: Jamie Blackburn, Diane Gilbert, Betsy Havens, Rob Shaw, Steven Whetstone, James E. Calk and others. Featuring an extensive collection of handcarved museum quality frames. Art and frame restoration. Hours: Mon.-Fri., 9:30am-6pm; Sat., 10am-5pm. Contact: 803/256-1616 or at ([www.havensframemakersandgallery.com](http://www.havensframemakersandgallery.com)).

**HoFP**, 2828 Devine Street, Columbia. **Ongoing** - Featuring original works of art from around the world and around the corner. Hours: Mon.-Fri., 9am-5:30pm; Sat., 10am-5pm, & by appt.. Contact: 803/799-7405 or at ([www.hofpgallery.com](http://www.hofpgallery.com)).

continued on Page 59