

# NC Commercial Galleries

continued from Page 47

Heywood. Hours: Mon.-Sat., 9am-5pm. Contact: 336/873-9276 or at ([www.whynotpottery.com](http://www.whynotpottery.com)).

**Windsong Pottery**, 6109 Brantley Gordon Rd., Denton. **Ongoing** - Featuring handmade functional stoneware in glazes of floating blue and rainbow by Margie Nance, Matthew Nance, Lydia Nance and other family members. Hours: Mon.-Fri., 9am-5pm. Contact: 336/857-2485 or e-mail at ([windsongpottery@yahoo.com](mailto:windsongpottery@yahoo.com)).

**Wyndham & Brooke Haven Pottery Gallery**, 209 East Main St., Seagrove. **Ongoing** - Featuring fine functional high-fired stoneware with rich contemporary glazes by Wyndham and Melanie Dennison. Hours: Mon.-Sat., 9am-5pm & Sun., noon-5pm. Contact: 336/873-7254 or at ([www.brookehavenpottery.com](http://www.brookehavenpottery.com)).

## Shelby

**Buffalo Creek Gallery**, 104 East Warren Street, just across from the courthouse square, Shelby. **Ongoing** - Featuring an artist's co-op, including works by 24 local artists and 8-10 regional artists producing pottery, woodturnings, paintings, jewelry, quilting, weaving, stained glass, boxes and other art items. Hours: Mon.-Sat., 10am-6pm & Sun., noon-5pm. Contact: 704/487.0256 or at ([www.buffalocreekgallery.com](http://www.buffalocreekgallery.com)).

## Siler City

**Throughout Siler City, Jan. 18, 6-9pm** - "Siler City Art Walk," featuring exhibits at many of the city's exhibit spaces, along with music and the good food offered in town on the 3rd Fri. of the month. Hosted by the North Carolina Arts Incubator. Contact: 919/663-1335 or at ([www.ncartsincubator.org](http://www.ncartsincubator.org)).

**Against His Will Gallery and Studio**, 117 E. Second St., Siler City. **Ongoing** - Featuring handknitted rugs, quality yarn, stunning alpaca fiber in a variety of colors, handmade knitting needles, Fricke spinning wheels as well as very cool mobiles, hand poured environment-friendly candles, and more! Hours: Wed.-Fri., 1-5pm & Sat., 10am-5pm. Contact: 919/742-1122 or at ([www.AgainstHisWillStudio.com](http://www.AgainstHisWillStudio.com)).

**Chatham Camera Club Gallery**, 229 N. Chatham Ave., Siler City, NC. **Ongoing** - Featuring works by a diverse group of amateur and professional photographers networked together around the idea of sharing our knowledge and experience with each other, while enjoying our interest in photography. Hours: by chance and the 3rd Fri. from 6-9pm. Contact: ([www.chathamcameraclub.org](http://www.chathamcameraclub.org)).

**Hotel Hadley Studios**, 130 N. Chatham Ave., Siler City. **Ongoing** - Featuring works by Kristy Church, Sarah Kuhn and Drucilla Pettibone. We consist of 6 studios and an exhibition space. We will have monthly rotating shows in the gallery space. Hours: 3rd Fri. 6-9pm and by chance and appt. Contact: 919/663-0241 or at ([www.hotelhadleystudios.com](http://www.hotelhadleystudios.com)).

**Lakewood Pottery**, 11330 Hwy. 64 W., Siler City. **Ongoing** - Featuring crystalline, high-fired porcelain and gold lusters by Ed Weintraub. Hours: Tue.-Sat., 10am-4pm & Sun., noon-4pm. Contact: 919/663-3743.

**Person to Person Art Studio/Gallery**, 210 N. Chatham Ave., Siler City. **Ongoing** - Featuring unique art for interesting people, all created by artist Roger Person. Hours: by appt and on the 3rd Fri., 6-9pm. Contact: 919/663-0982 or e-mail at ([person@charter.net](mailto:person@charter.net)).

**Raleigh Street Gallery**, 120 W. Raleigh St., Siler City. **Ongoing** - Featuring a consortium of many artists from the area painters, sculptors, metal workers, jewellers, basket weavers, soap makers, slate artist, wood workers, - whose works are all on display in a spacious and welcoming atmosphere. Hours: Wed.-Fri., 10am-6pm, by chance or appt. and on 3rd Fri., 6-9pm. Contact: 919/663-6278 or at ([www.raleighstreetgallery.com](http://www.raleighstreetgallery.com)).

## Sparta

**Blue Ridge Gallery of Fine Art**, 103 Gallery Lane, 15 minutes from downtown Sparta. **Ongoing** - Featuring a variety of artworks by local and regional artists. Hours: Thur.-Sat., 11am-6pm & Sun., 1-6pm, when open - call ahead. Contact: 336/372-1711 (<http://www.blueridgefineart.com>).

**Cater Pots Studio**, 209 Antioch Church Road, 4 miles from the town of Sparta. **Ongoing** - Husband-&-Wife team, Daniel & Robin Cater

create beautiful stoneware pottery in their Blue Ridge mountain studio. Cater Pots are fired to cone 6 oxidation, so all functional pottery is food, dishwasher, microwave, and oven safe. Cater Pots mixes their own glazes and applies them to the bisqueware in attractive combinations by various means including dipping, brushing and spraying. Hours: Mostly Wed.-Sat., 10am-4pm - call ahead. Contact: 336/372-4604 or at (<http://www.caterpots.com>).

**Mangum Pottery of Turkey knob**, 280 Turkey Hollow Lane, Sparta. **Ongoing** - Featuring pottery and ceramic art by Robin Mangum in a wide variety of function and form. Hours: hours vary so call ahead. Contact: 336/372-5291 or (<http://www.mangumpottery.com>).

## Statesville

**Village Pot Shop Fine Arts and Crafts Gallery**, 248 N. Center St., 2 Blocks North of the Center of town on the right, Statesville. **Ongoing** - Our mission is to provide a showcase for local and regional artists and artisans, providing high-quality decorative and functional arts and crafts to patrons with an eye for the finer things. Our arts and crafts galleries feature handmade jewelry, blown glass, woodwork, regional pottery, metalwork, mosaics, hand-woven fibers, paintings and more. So, whether you are interested in: vases, bowls, paper weights, fanciful ornaments, stained glass, sun-catchers, decorative boxes, exquisite bowls turned from found pieces of wood, each one of a kind, watercolors, baskets, ceramics, fine photography, prints, collages or oil paintings. We also offer classes and workshops by local and regional artists. Hours: Tue.-Fri., 10:30am-5pm & Sat., 10am-4pm. Contact: 704/380-4689 or at ([www.villagepotshop.com](http://www.villagepotshop.com)).

## Swansboro

**Tidewater Gallery**, 107 N. Front Street, the W.E. Mattocks house, one block from Hwy. 24, Swansboro. **Ongoing** - The gallery offers a diverse collection of fine art, fine crafts and custom framing. The collection includes watercolors, oil & acrylic paintings, pastels, photography, stone, metal & metal sculpture, ceramics, art glass, pottery & ceramics, jewelry, decoys and fiber art from regional artists and others from around the US, including: Paris Alexander, Charles Albert, Kwon Hyun Allister, John Althouse, Leann Aylward, Linda Anderson, Maggie Arndt, Diana Moses Batkin, Sheila Brodnick, Michael Brown, Rebecca Caeden, Connie Chadwell, Robin Cheers, Suzanne Clements, Elizabeth Corsa, Judy Crane, Karen Lee Crenshaw, Lisinda Dobbs, Mary Erickson, Justine Ferreri, Kevin Geraghty, Sally Gilmour, Lisa Gloria, Stephen Greer, Robin Grazetti, Suzanne Grover, James Havens, Paul Hee, Pat House, Carl Hultman, Hsu Studios, Ann Huml, Charles Larrabino, Patrick Johnson, Michelle Kaskovich, Sharon Kearns, Jean Kennedy, Lisa Kessler, Margot Dizney Loy, Ann Boyer LePere, Sabrina Lewandowski, Margaret Martin, Larry McDonald, George Mitchell, Mitchell Morton, Susan Moses, Kim Mosher, Christine O'Connell, Sara O'Neill, Nancy Orcutt, Kimberly Carter Pigott, Alan Potter, Kim Roberti, Donna Robertson, Dianne Rodwell, Mike Rooney, Joyce Ross, Beth E. Roy, Susan Scoggins, Pam Shank, Lois Sharpe, Jim Snyders, David Sobatta, Bonnie Stabler, Beth Stevens, Vicki Sutton, Jerry Talton, Catherine Thornton, Ray Voelpel, Doris Ward, Mary Warshaw, Eileen Williams, Jim Wordsworth, Scott Young, and Aggie Zed. Hours: Fri. & Sat., 10am-5pm. Contact: 910/325-0660 or at ([www.tidewatergallery.com](http://www.tidewatergallery.com)).

## Sylva

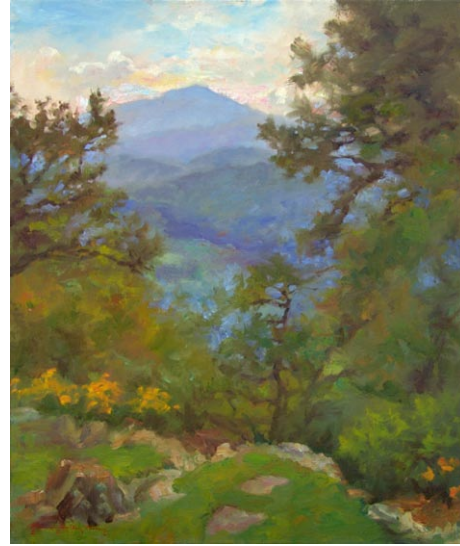
**Karcher Stone Carving Studio & Gallery**, 260 North Beta Road, off US 74, Sylva. **Ongoing** - Featuring a working studio and gallery with stone carvings by Collene Karcher, executed in marble, alabaster, and limestone with steel and aluminum introduced at times. Hours: by appt only. Contact: 828/586-4813 or at ([www.collenekarcher.com](http://www.collenekarcher.com)).

## Tryon

**Green River Gallery**, 145 N. Trade Street, Tryon. **Ongoing** - Featuring fine art and framing, with works in various media by regional and national artists. Hours: Tue.-Fri., 10am-5pm & Sat., 10am-1pm. Contact: 828/859-2255.

**Simply Irresistible!**, 66 Ola Mae Way, located on the hill above Century 21, Tryon. **Ongoing** - Featuring art and craft of the Carolinas, including works by Lucinda Pittman (pottery), Yummy Mud Puddle (lamps), and the tile and iron furniture of Bill Crowell and Kathleen

Carson. Hours: Wed.-Sat., 10am-5pm. Contact: 828/859-8316 or at ([www.SimplyIrresistibleGallery.com](http://www.SimplyIrresistibleGallery.com)).



Work by Richard Christian Nelson

**Skyuka Fine Art**, 133 North Trade St., Tryon. **Ongoing** - Featuring works by Richard Christian Nelson, Richard Oversmith, Linda Cheek, Keith Spencer, Kelly Welch, and Anne and William Jameson. Also works by notable artists of the past from the collection of Tryon art dealer Nowell Guffey will be on display. Hours: Tue.-Sat., 10am-5pm or by appt. Contact: 828/817-3783 or at ([www.SkyukaFineArt.com](http://www.SkyukaFineArt.com)).

## Wadesboro

**Olde Mill Gallery & Studios**, Lockhart-Taylor Center, 514 N. Washington St., Wadesboro. **Ongoing** - At the gallery visitors will see artwork by regional artists which includes: original paintings in oil, acrylic & watercolor, that range from landscapes to abstracts; photography; works in copper and copper repousse; ceramic creations, custom sculptured and functional; art glass jewelry, jewelry made from beads of Swarovski crystal; hand-stitched quilts of exquisite designs; hand painted goblets, pitchers and vases; wood sculptures and turnings, and more. Hours: Mon.-Thur., 10am-5pm; Fri., 10am-3pm or by appt. Contact: 704/272-5464 or at ([www.oldemillgallery.org](http://www.oldemillgallery.org)).

## Waxhaw

**Stewart's Village Gallery**, 116 McDonald St., Waxhaw. **Ongoing** - Featuring pottery by Bill Stewart, as well as works by over 300 other artists including both decorative and functional handmade pieces. The gallery is filled with pottery, jewelry, wrought iron, garden accents, decorative whimsy and so much more. Hours: Mon.-Sat., 10am-5pm & Sun., 1-5pm. Contact: 704/843-5638 or at ([www.stewartsvillagegallery.com](http://www.stewartsvillagegallery.com)).

## Waynesville

**Blue Owl Studio & Gallery**, 11 N. Main Street, Waynesville. **Ongoing** - Featuring art and pottery by local and regional artists, plus our own unique and exclusive collection of vintage handcolored art advertising, quotes and mountain scenes. Hours: Mon.-Sat., 10am-5:30pm & (in season) Sun., noon-5pm. Contact: 828/456-9596 or at ([www.blueowlnc.com](http://www.blueowlnc.com)).

**Burr Studio & Gallery**, 136 N. Main Street, Waynesville. **Ongoing** - Featuring lyrical sculpture by Dane Burr, functional pottery by MaryEtta Burr, and works by other artisans in various media. Hours: Tue.-Sat., 10am-5pm. Contact: 828/456-7400.

**Earthworks Gallery**, 21 N. Main Street, Waynesville. **Ongoing** - Featuring art in all mediums celebrating native peoples and our earth. Hours: Mon.-Sat., 10am-6pm & Sun., noon-1pm. Contact: 828/452-9500 or at ([www.earthworksgallery.com](http://www.earthworksgallery.com)).

**Grace Cathey Metal Gallery & Sculpture Garden**, 136 Depot Street, inside and behind Walker Service Station, Waynesville. **Ongoing** - Featuring works in metal by Grace Cathey including mirrors, lamps, and garden art. Demonstrations on some weekends. Hours: Mon.-Thur., 7am-6pm & Fri.-Sat., 11am-4pm. Contact: 828/456-8843 or at ([www.gracecathey.com](http://www.gracecathey.com)).

**Ridge Runner Naturals**, 33 N. Main Street, Waynesville. **Ongoing** - Featuring watercolor scenes of the mountains, quiet meadows and whispering forest of Western North Carolina by Jo Ridge Kelley. Hours: Mon.-Sat., 10:30am-5:30pm. Contact: 828/456-3003 or at ([www.JoKelley.com](http://www.JoKelley.com)).

**Studio Thirty-Three**, 33 Pigeon St., Waynesville. **Ongoing** - A unique jewelry studio and gallery, featuring the works of national award winning regional jewelers and full service studio offering fine handcrafted jewelry, custom design and restoration. Specializing in custom wedding

bands and one-of-a-kind designs as well as rare and exotic gemstones. Hours: Tue.-Sat, 11am-5pm or by appt. Contact: 828/456-3443.

**T. Pennington Art Gallery**, 15 N. Main Street, Waynesville. **Ongoing** - Featuring pencil drawings of local scenery, and landmarks by Teresa Pennington, including originals, prints and gift items. Also framing is available. Hours: Mon.-sat., 10am-5pm. Contact: 828/452.9284 or at ([www.tpennington.com](http://www.tpennington.com)).

**Textures**, 142 N. Main St., Waynesville. **Ongoing** - Featuring hand-crafter furniture by John Germandt, textile art by Suzanne Germandt, and other items of home decor. Hours: Mon.-Sat., 10am-6pm & most Sun., 1-5pm. Contact: 828/452-0058 or at ([www.texturesonmain.com](http://www.texturesonmain.com)).

**The Jeweler's Workbench**, 80 N. Main St., Waynesville. **Ongoing** - Specializing in fine hand-crafted jewelry, custom design and repair, limited edition watches and jewelry boxes. Featuring award-winning artists of the Great Smoky Mountains and from across the country. Hours: Mon.-Sat., 10am-5:30pm. Contact: 828/456-2260.

**Twigs & Leaves**, 98 N. Main Street, Waynesville. **Ongoing** - Featuring the nature-related porcelain works with leaves by Kaaren Stoner, as well as other works by regional artists and craftsmen. Hours: Wed.-Sat, 10am-5:30pm. Contact: 828/456-1940 or at ([www.twigsandleaves.com](http://www.twigsandleaves.com)).

## Weaverville

**Mangum Gallery**, 16 North Main Street, Weaverville. **Ongoing** - Featuring functional and decorative pottery dinnerware. Hours: Mon.-Fri., 9am-5pm and Sat., 10am-4pm. Contact: 828/645-4929 or ([www.mangumpottery.com](http://www.mangumpottery.com)).

**Miya Gallery**, 31 N. Main St., Weaverville. **Ongoing** - The gallery is a new and refreshing addition to the WNC art scene. We exhibit work of over 50 artists: fine jewelry, clay, wood, glass, metal, fiber, photography and two dimensional art. Hours: Tue.-Fri., 10am-6pm; Sat., 10am-5pm & Sun., noon-4pm. Contact: 828-658-9655 or at ([www.miyagallery.com](http://www.miyagallery.com)).

## West Jefferson

**Acorn Gallery**, 103 Long St., West Jefferson. **Ongoing** - Featuring original works by award winning and nationally exhibited artist Raney Rogers, including wildlife and landscape paintings and prints. Hours: Tue.-Fri., 11am-5pm & Sat., 11am-2pm. Contact: 336/246-3388 or at ([www.acorngallery.com](http://www.acorngallery.com)).

**Ashe Custom Framing & Gallery**, 105 S. Jefferson Ave., West Jefferson. **Ongoing** - Featuring a varied selection of originals and prints by local and regional artists. Also, a wide array of pottery and handcrafted wooden vases. Hours: Tue.-Fri., 10am-5pm & Sat., 10am-2pm. Contact: 336/246-2218.

**Broomfields Gallery**, 414 E. 2nd St. (across from the post office), West Jefferson. **Ongoing** - Featuring an exhibition of works by NC and SC artists in various mediums in a setting of quality antiques. Hours: Tue.-Sat., 11am-5pm. Contact: 336/846-4141 or at ([www.broomfieldsgallery.com](http://www.broomfieldsgallery.com)).

**Stephen Shoemaker Studio**, 113 S. Jefferson Ave., West Jefferson. **Ongoing** - Featuring original works by watercolorist Stephen Shoemaker. Specializing in historic landscapes and paintings of places and events in/of Ashe County and the area. The "Virginia Creeper" train series is particularly popular. Hours: Mon.-Fri., 10am-5pm or by chance. Contact: 336/246-3401.

## Wilmington

**Downtown Wilmington. Jan. 25, 6-9pm** - "Fourth Friday Gallery Nights," featuring a free monthly event where downtown galleries and studios open their doors to the public in an after-hours celebration of art and culture. The art walk is a self-guided tour featuring exhibitions of various artistic genres including oils, acrylics, watercolors, pastels, metals, ceramics, mixed media and more. Maps are available at all participating locations as well as the Visitors and Convention Center. For more info visit ([www.wilmingtonfourthfridays.com](http://www.wilmingtonfourthfridays.com)).

**Bottega Art & Wine Gallery**, 208 N. Front St., Wilmington. **Ongoing** - Featuring works by regional and international artists in a variety of media. Hours: Tue.-Wed., 1-10pm and Thur.-Sat., 1pm-midnight. Contact: 910/763-3737 or at ([www.bottegageallery.com](http://www.bottegageallery.com)).

**Checker Cab Gallery**, 130 N. Front Street, Suite 102, Wilmington. **Ongoing** - The gallery is a full-service gallery featuring abstract and

continued on Page 49