



JENNIFER SMITH ROGERS

Queen Street South 40x30 o/l

**SMITH
KILLIAN**
FINE ART

9 QUEEN STREET
CHARLESTON, SC
843-853-0708
WWW.SMITHKILLIAN.COM



Karen Burnette Garner Artist

The Treasure Nest Art Gallery
1055 Johnnie Dodds Blvd., (Crickentree Village)
Mount Pleasant, SC 29464
843-216-1235

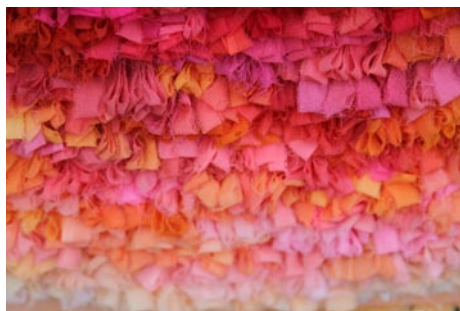
Curious? Read my blog at www.karenburnettegarner.com

City of North Charleston, SC, Features Works by Kristy Bishop

The City of North Charleston's Cultural Arts Department is pleased to announce that works by the City's current Artist-in-Residence, Kristy Bishop, will be on exhibit at the North Charleston City Gallery, located in the Charleston Area Convention Center in North Charleston, SC, from Jan. 2-31, 2013. The public is invited to attend a free reception at the gallery hosted by the artist on Thursday, Jan. 3, from 5pm-7pm.

In *Wash Over You*, Bishop presents fiber works composed of hand dyed silk that use color transition and gradient to translate emotions. The subtle changes in color gradation within each work represent the fluidity of emotion. Simple shapes such as circles, ovals, and rectangles are used to reflect the growth and expansion of a feeling. "This body of work is an expression of my desire for the viewer to see the sudden burst of emotion that inspires it," Bishop explains.

The featured pieces are left untitled so that the emotions the artist experienced while making each piece do not necessarily influence the interpretation of the viewer. For example, *Untitled (Blue Oval)* is about Bishop's personal sense of foreboding and helplessness. "During the creation of this work, these emotions were stemming from environmental and social issues that the world was/is facing at the time," she says. "This led me to use the dark blues, purples, and grays that change to muted yellows, blues, and greens because I felt that they represented my own feelings of dread and uneasiness." In the end, it is Bishop's hope that individuals viewing this series allow themselves to feel whatever emotion it is that the colors elicit.



Work by Kristy Bishop

Bishop, originally from Charleston, received a BA in Studio Art with a concentration in painting from the College of Charleston in 2008. In the spring of 2009 she moved to Las Vegas, NV, where the beauty and fragility of the Mojave Desert became the primary inspiration for her paintings. It was in December of that year that she began experimenting with fiber mediums, incorporating sewn and embroidered elements into her paintings. By the time Bishop returned to Charleston in the summer of 2010, she had made the transformation from painter to fiber artist.

Bishop's most recent works are created solely from fabric, featuring hand-dyed silk that is cut, gathered, and sewn. Thousands of tiny pieces of fabric are manipulated to create large scale abstract pieces. Bishop has participated in a number of group exhibitions, both locally and nationally, and is currently offering residencies to North Charleston schools and community groups as the City's Artist-in-Residence.

For further information check our SC Institutional Gallery listings, call the Cultural Arts Department at 843/740-5854 or visit (<http://bit.ly/culturalarts>).

Don't forget about our blogs which offer more info about the visual art community in the Carolinas like *Carolina Arts News* at (<http://carolinaartsnews.wordpress.com/>) which provides info about Call For Entries, Juried Exhibit Results, and other Artists' Opportunities. Just type in what you're looking for in the search box.

College of Charleston in Charleston, SC, Features Works by Lesley Dill

The Halsey Institute of Contemporary Art at the College of Charleston School of the Arts in Charleston, SC, is pleased to begin 2013 with an exhibition of work by contemporary New York based artist Lesley Dill. Entitled, *Poetic Visions: From Shimmer to Sister Gertrude Morgan*, the exhibition will be on view Jan. 25 through Mar. 9, 2013. A reception will be held on Jan. 25, from 6-8pm.

On Friday, Jan. 25, at 5pm, Dill will give a lecture about her work in Room 309 of the Simons Center for the Arts entitled, *We Are Animals of Language*. Dill will discuss the role of language in her work, which ranges from sculpture and photography to opera and large-scale community projects. She will screen a clip from 2008 opera *Divide Light*, present a multi-tiered project, *Tongues on Fire: Visions & Ecstasy*, in collaboration with the Emmanuel Baptist Church Spiritual Choir in Winston-Salem, NC, and will also show images from her fall 2010 installation in New Orleans, *Hell Hell Hell Heaven Heaven Heaven: Sister Gertrude Morgan and Revelation* and from her spring 2012 installation at George Adams Gallery in New York City, *Faith and the Devil*.

Nationally known for the unexpected and dramatic ways in which she fuses art and language, Dill explores the relationships between language and transformational experience through multi-faceted work that appeals to a wide range of interests.

"*Poetic Visions* invites audiences to delve into art, literature, spirituality, feminism - even fashion," says curator Barbara Matilsky, of the Whatcom Museum in Bellingham, WA, who worked closely with Dill to mount this traveling exhibition. The Halsey Institute of Contemporary Art rarely hosts traveling exhibitions; preferring instead to originate its own exhibitions and educational programs. An exception was made for this show, however, according to Halsey director Mark Sloan: "Dill's work has always



Work by Lesley Dill

been fascinating to me in its combination of word and image". "When I learned my colleague Barbara Matilsky was organizing an exhibition of Dill's recent works, I jumped at the chance to participate in the tour".

Describing language as "the touchstone, the pivot point of all my work," Dill reveals the potential of words to stir feelings and

continued on Page 9

Laura Liberatore Szweda



Summer Heat, oil on canvas

www.LauraLiberatoreSzweda.com

*Contemporary Fine Art
by appointment*