

Art League of Hilton Head

continued from Page 12 / [back to Page 12](#)

Exhibiting artists in the Guild were juried in by a committee of fine art crafters and will have a special label highlighting their guild membership. The fine art craft artists want to show you what you can do with three-dimensional art in your house. Farbstein's goal is for "everyone to have a beautiful piece of art in their home."

The Art League Gallery is located in the Greer Gallery of the Arts Center in Shelter Cove. In addition to the featured artists, the gallery will be displaying the work of other member artists as well.

For further information check our SC Institutional Gallery listings, call the Art League at 843-681-5060 or visit (www.ArtLeagueHHL.org).



Works by Sheri Farbstein

Some Exhibits That Are Still On View

Our policy at *Carolina Arts* is to present a press release about an exhibit only once and then go on, but many major exhibits are on view for months. This is our effort to remind you of some of them.

The University of North Carolina at Greensboro is presenting the exhibit, *Persona: A Body in Parts*, which examines the human body as a plastic surrogate form from which multiple and complex identities can be defined, on view at the Weatherspoon Art Museum in Greensboro, NC, through Dec. 11, 2011.

The exhibition includes new work by Carter (New York), a series of new Sound-suit sculptures by Nick Cave (Chicago), recent large-scale photographs by Nikki S. Lee (Seoul), Barbara Probst (New York/Berlin) and Gillian Wearing (London), as well as a newly commissioned sculpture/performance work by Kate Gilmore (New York).

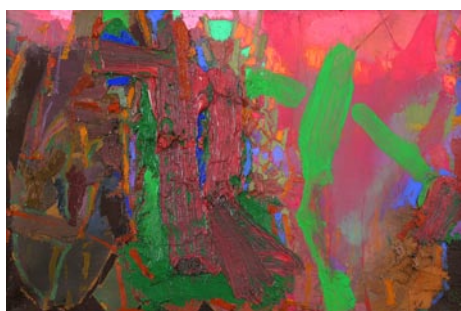
For further information check our NC Institutional Gallery listings, call the Museum at 336/334-5770 or visit (<http://weatherspoon.uncg.edu/>).

CAM Raleigh in Raleigh, NC, is presenting the exhibit, *Deep Surface: Contemporary Ornament and Pattern*, the first major exhibition to examine the re-emergence of ornament and pattern over the last 15 years, on view through Jan. 2, 2011.

Deep Surface celebrates its reinvigoration as a communicative, functional, and desirable form of cultural expression, across all of the disciplines of design. CAM Raleigh is a partnership between the community and North Carolina State University's (NC State) College of Design.

The exhibition comprises six thematic sections and features 72 remarkably inventive works from 42 international designers and artists, including such seminal works as Marcel Wanders's Knotted Chair, wallpaper by Paul Noble and Vik Muniz for Maharam Digital Projects, and fashions created from reconstructed second-hand clothes by Junky Styling.

For further information check our NC Institutional Gallery listings, call the center at 919/513-0946 or visit (<http://camraleigh.org/>).



Sunset Cup 4 by Brian Rutenberg, 2006, oil on linen, 20" x 30"

The Franklin G. Burroughs-Simeon B. Chapin Art Museum in Myrtle Beach, SC, will present the exhibit, *Brimming Tide: Paintings and Drawings by Brian Rutenberg*, on view from Sept. 16 through Jan. 3, 2012.

Rutenberg's paintings are known for brilliant, multilayered surfaces, that give the effect of a mass of crushed jewels, and reflect his passion for the works of Renaissance masters of Europe. But the roots of his art are in South Carolina's Lowcountry, and the Myrtle Beach native son returns this fall with an exhibition at the Franklin G.

Burroughs-Simeon B. Chapin Art Museum. The exhibition, sponsored by The Bellamy Law Firm, comprises 30 oil paintings and drawings representing a span of work from 1998 to 2011.

As a young and aspiring painter, Rutenberg sought to capture a unique representation of the landscape through abstraction. Drawn from his childhood growing up along the South Carolina coast, his early memories continue to be a presence in his painting. Inspired by artists like Gregory Amenoff, Joan Mitchell and Hans Hofmann, Rutenberg executes paintings that embrace spirituality, fascination with color and an obvious love of paint. Although nature continues to be the major theme in his paintings, each of his works presents a fresh a brand new approach and vision.

For further info check our SC Institutional Gallery listings, call 843/238-2510 or visit (www.MyrtleBeachArtMuseum.org).

The McColl Center for Visual Art in Charlotte, NC, is presenting the exhibit, *ELEMENTS*, featuring works by Michael Gayk and Carrie M. Becker, on view through Jan. 7, 2012.

Michael Gayk is a metalsmith and digital sculptor working with combinations of hardware and sensory data searching for novel ways to develop 3D form and meaningful context. His current work investigates the relationship between decorative craft and definitions of technological 'body'.

Carrie M. Becker enjoys experimenting with her sculptural materials. Through the manipulation of fabric as a rather malleable substrate, she finds that it can be sewn, filled, encased in plastic and wax and built up as the need allows. Since she feels more connected to her work when it can address something more than mere formalism, she seeks to identify the created forms as knowns that are somewhat identifiable.

For further information check our NC Institutional Gallery listings, call the Center at 704/332-5535 or visit (www.mccollcenter.org).

The Black Mountain College Museum + Arts Center in Asheville, NC, is presenting the exhibit, *John Cage: A Circle of Influences*, focusing on the amazing life and work of this artist, musician, composer, philosopher, poet, music theorist and amateur mycologist, on view through Jan. 14, 2012.

The exhibition is being held in conjunction with ReVIEWING Black Mountain College 3, a weekend gathering of scholars, performers and artists coming to Asheville to present ideas and perform works related to John Cage, undoubtedly one of the most famous and influential figures associated with Black Mountain College. Cage taught at BMC in the summers of 1948 and 1952 and was in residence the summer of 1953.

For further information check our NC Institutional Gallery listings, call the Museum at 828/350-8484 or visit (www.blackmountaincollege.org).

The Southeastern Center for Contemporary Art in Winston-Salem, NC, is presenting the exhibit, *Margarita Cabrera: The Space in Between*, on view through Jan. 22, 2012. The exhibition was organized by SECCA, and curated by Steven Matijcio.

Cabrera is a Mexican-American artist, activist and organizer whose objects and

continued on Page 16



Hilton Head Island, SC

sculpture
metal work
assemblage
works in clay
basketry
glass
fiber
wood...
as well as jewelry and handmade artists books



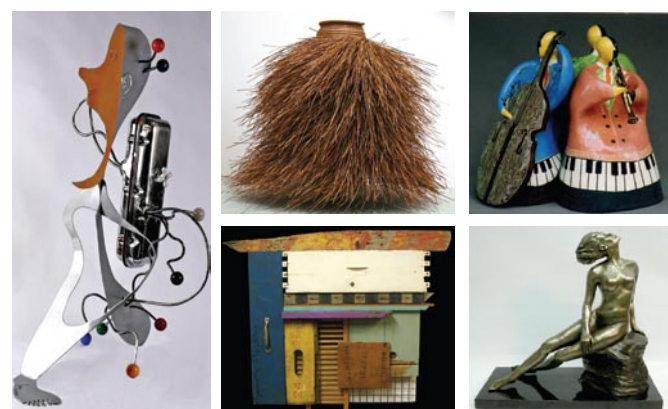
NEW at the Art League!
Fine Art Crafts Guild

Join the artists for the debut showing of the **Fine Art Crafts Guild:**

CraftHiltonHead2011

Opening Reception
Thursday, December 1 • 5-7 PM
Everyone welcome

Show dates:
November 29 - December 30
Art League of Hilton Head • Walter Greer Gallery
Arts Center of Coastal Carolina
14 Shelter Cove Lane
843.681.5060
www.ArtLeagueHHL.org



The main gallery also includes works of other artists.