

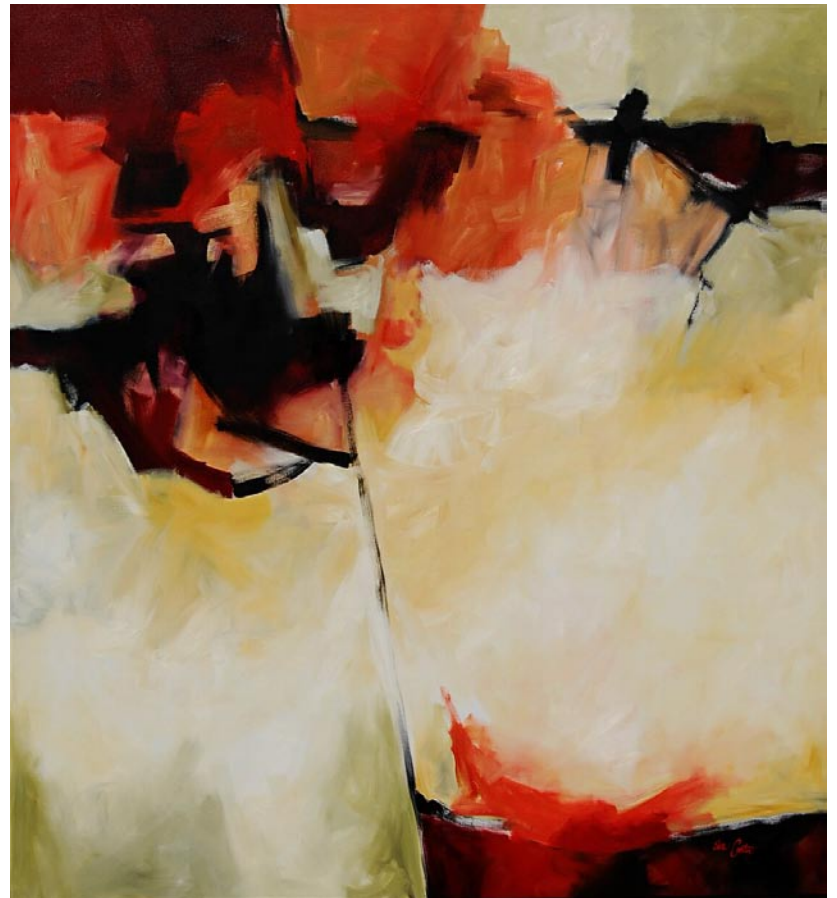


Karen Burnette Garner

Artist

The Treasure Nest Art Gallery  
1055 Johnnie Dodds Blvd., (Crickentree Village)  
Mount Pleasant, SC 29464  
843-216-1235

Curious? Read my blog at [www.karenburnettegarner.com](http://www.karenburnettegarner.com)



**Fracture**  
Oil on Canvas, 72 x 66 inches

Eva Carter

**Studio**  
6696 Bears Bluff Road  
Wadmalaw Island, SC 29487

**By Appointment Only**  
Please call (843) 478-2522  
[www.EvaCarterGallery.com](http://www.EvaCarterGallery.com)

## City of North Charleston, SC

*continued from Page 26 / back to Page 26*

Charleston Artist Guild Gallery.

For further information check our SC Institutional Gallery listings, call the

Art Department at 843/740-5854 or visit (<http://bit.ly/culturalarts>).

## Atelier Gallery in Charleston, SC, Features Works by Kirsten Moran

Atelier Gallery in Charleston, SC, will present *Evocation*, featuring works by Kirsten Moran, on view from Dec. 6 - 31, 2013. A reception will be held on Dec. 6, from 6-9pm.

In this new series of paintings, Moran continues to investigate the history of girls and women from the corporeal, environmental and psychological perspectives. This exhibition explores a personal journey toward an understanding of our ancestral roots: a matrilineage that connects us all through our bodies, the land and the psyche.

Moran approaches her paintings as a life-long excavation into the feminine most often utilizing the classical ruin as a point of departure. She incorporates portraiture, architectural elements and the landscape with varying degrees of abstraction in her paintings. The paint itself becomes a subject with its undeniable materiality and lushness. Her surfaces mimic the elements of the earth.

There is a sense of our own deep and archaic history when we are in the presence of a ruin. The archetypes Moran works with in her paintings are impacted thoroughly by this element of the ancient. Archetypes operate through time. Culture shifts and evolves but they remain the same and are relatable through these developments as the centuries pass. The ruin exists similarly in both places, past and present. It provides an echo for what once was and what still exists within each of us.

The forms and shapes that Moran works in the paintings are repeated



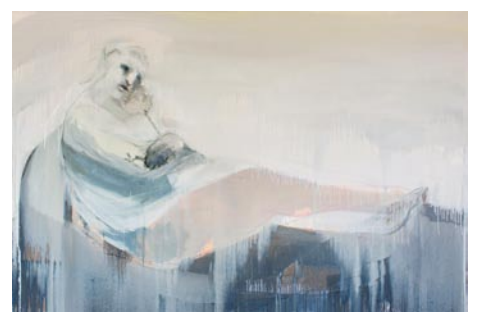
Work by Kirsten Moran continually and re-appear within her abstractions as well as her figural works. Details of the representational pieces are blown up, magnified many times over, and permit Moran to indulge in a wide array of materials and experimentation. Her figural works do not represent a direct observable reality. Rather, they convey an emotional expression that is also evident in the non-representational abstractions.

The selected works were created using a variety of sources over a 20-month period of time. Most of these paintings were created in tandem with one another. Moran used a live model, photographs of her daughter, her own body, her own photographs of casts of sculpture in the basement of the Telfair Academy at the Telfair Museum of Art in Savannah, GA, and many other photographic sources.

*continued above on next column to the right*

period of time. Most of these paintings were created in tandem with one another. Moran used a live model, photographs of her daughter, her own body, her own photographs of casts of sculpture in the basement of the Telfair Academy at the Telfair Museum of Art in Savannah, GA, and many other photographic sources.

Moran is a graduate of Savannah College of Art and Design (MFA) and Binghamton University (BFA Painting and BA Cinema). *Evocation* is her second solo show this year following her thesis show *Ruin* at Fahm Hall Gallery in Savannah, GA. Moran has exhibited at the Columbia Museum of Art, LaGrange Art Museum, Strohl Art Center in Chautauqua, New York and Pinnacle Gallery in Savannah,



Work by Kirsten Moran

GA, among other venues.

For further information check our SC Commercial Gallery listings, call the gallery at 843/722-5668 or visit ([www.theateliergalleries.com](http://www.theateliergalleries.com)).

## Real Estate Studio in Charleston, SC, Offers Works by Austin Grace Smith

The Real Estate Studio in Charleston, SC, will present *Celebrate the Coast*, featuring works by Austin Grace Smith, on view from Dec. 18 through Jan. 28, 2014. A reception will be held on Dec. 18, from 5-8pm.

Austin Grace Smith celebrates the coast in her new show. Fresh from a trip to South America, Summerville, SC, native and Charleston-based artist debuts her latest collection of coastal paintings and tide clocks.

Grace Smith received a new perspective on the Charleston coast after taking a trip to South America. While Peru offered her the beautiful landscapes of the Andes Mountains, returning home filled her with delight as the sunsets and sunrises bounced colors off the waves and tidal waters. Upon returning home, she found herself rejuvenated and inspired to create.

Each piece of Grace Smith's work is hand painted with care on individually selected wood panels. This new collection will feature full-sized paintings, miniatures and new tide clocks.

Grace Smith is an artist living and working in Charleston, SC. Growing up



Work by Austin Grace Smith

in Summerville, she has always been inspired by the Lowcountry and has a deep appreciation for her roots. Although she has pursued art her entire life, she dedicated her career to her craft in 2010. In 2012, she was featured in Piccolo Spoleto and has since held many solo and group art shows. Her tide clocks and paintings on wood panels are all inspired by the sand, sea and sky.

The Real Estate Studio is the downtown office of Dunes Properties, a boutique real estate, vacation rental and property management company serving the Charleston area since 1989. Located

*continued on Page 30*