

Exquisite handblown glass gallery and studio in the historic downtown vista arts district. Open to the public Mon. thru Sat. Offering unique and affordable blown glass vases, bowls, flowers, indoor and outdoor lighting, zipper perfume bottles, ringholders, sculpture, ornaments and much, much more. Providing quality, uniqueness, and affordability for 20 years!

Ask about our classes!!



ONE EARED COW GLASS

*One Eared Cow Glass, Inc.
1001 Huger St. Columbia, SC
803-254-2444 www.onearedcow.com*



MOUSE HOUSE, Inc.

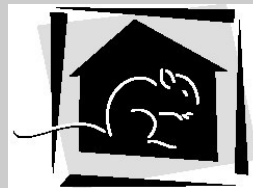
2123 Park Street
Columbia, SC 29201
(803) 254-0842

mouse_house@prodigy.net

<http://mousehouseinc.blogspot.com>

Specializing in antiquarian prints, custom mirrors,
and the fiber arts of Susan Lenz

www.susanlenz.com



MOUSE HOUSE, INC.
FRAMES & ANTIQUARIAN PRINTS

Columbia Metropolitan Airport, SC, Features Works by Charles Hite

The Columbia Metropolitan Airport in Columbia, SC, is presenting nearly 40 original photographs of Midlands scenery and local sites by Charles Hite, on view through Dec. 31, 2014.

One of six 2-D artists selected for the inaugural year of this rotating exhibit, Hite is the only photographer. In addition to the standard framed photos on display, Hite's larger pieces were expertly framed by two inmates at Walden Correctional Institution on Broad River Road in Columbia, in the Prison Industries Frame Shop.

In addition to photography, Hite's hobbies include astronomy and landscape gardening. His love of nature in all aspects is evident in his work. His venture into serious photography began in 2009 at age 60. At the encouragement of family and friends, he began selling his photos in late 2012 at Soda City Market in Columbia.

An enthusiastic storyteller, Hite enjoys sharing the stories of his photos with others and listening to their experiences. Most of his scenic photos are from throughout South Carolina and the Midlands, including nature scenes, historic sites and buildings, and astronomy related events. He has also been commissioned to provide photos for several local businesses.

This exhibition is organized by the Cultural Council of Richland and Lexington Counties, in partnership with the Columbia Metropolitan Airport. Over 60 Midlands visual artists submitted work for



Work by Charles Hite

committee consideration; six 2-D and six 3-D artists were ultimately selected. These rotating exhibits will be on display in the security checkpoint hallway through early 2015.

Charles Hite is a life-long resident of Lexington County, SC, making his home in Cayce since 1977. His professions have included the US Army (serving in Germany), licensed professional land surveyor, sales/customer service rep, and currently right-of-way agent with the SCDOT.

Hite's photographs are always available at Nest (Main Street, Columbia, inside the Marriott). His art is also sold on Saturdays at Soda City Market, and various other local markets.

For further information check our SC Institutional Gallery listings or call Lynne Douglas, Air Service Development & Customer Service Manager at 803/822-5020.

Check us out at (www.carolinaarts.com) or e-mail to (info@carolinaarts.com)

The deadline each month to submit articles, photos and ads is the 24th of the month prior to the next issue. This will be Dec. 24th for the January 2015 issue and Jan. 24 for the February 2015 issue.

After that, it's too late unless your exhibit runs into the next month. But don't wait for the last minute - send your info now.

And where do you send that info?
E-mail to (info@carolinaarts.com).

Vista Studios in Columbia, SC, Features Works from Midlands Clay Arts Society

Vista Studios in Columbia, SC, will present the Midlands Clay Arts Society's 14th Annual Holiday Sale, on view in Gallery 80808, from Dec. 4 - 7, 2014. A reception will be held on Dec. 4, from 5-8pm. Admission is free and there is no retailer mark up.

Do you have a unique personality? Then you deserve an art piece of equal and unique distinction. The Midlands Clay Arts Society's 14th Annual Holiday Sale gives you the opportunity to buy one of a kind, handmade art pieces that truly express your unique style and personality. Works range from whimsical and classical sculpture to creative serving pieces. Choose from decorative accessories, jewelry and yard art, all on display for your viewing and buying pleasure.

Those attending the show can participate in a free drawing to win pieces of pottery donated by nationally known clay artists who have given our pottery workshops during the year.

The Society was organized in 1987 to foster fellowship, education and creativity among local potters and clay artists and to promote appreciation of all things made from clay. For further info about the Society call Betsy Kaemmerlen at 803/376-6034 x6112.

This year's event will be open on Dec. 4-5, from noon until 8pm and Dec. 6-7, from noon until to 4pm.

For further information call Vista Studios at 803/252-6134 or visit (www.vistastudios80808.com).

Fine Arts Center of Kershaw County in Camden, SC, Offers Holiday Show

The Fine Arts Center of Kershaw County in Camden, SC, will present the 2014 *Holiday Sales Show*, on view at the Douglas Reed House at the Center of Kershaw County, from Dec. 6-17, 2014.

We're decking the halls at the at the Fine Arts Center of Kershaw County (FAC) in preparation for the 2014 Fine Arts Center of Kershaw County (FAC) *Holiday Sales Show*. A special preview evening is set for Friday, Dec. 5, from 5:30-7pm prior to the Chamber Choir of Kershaw County's Christmas Concert.

This popular sales show will feature more than 40 vendors with fabulous, one-of-a-kind items for everyone on your list, even your hardest to buy for. Set in the Center's historic Douglas-Reed House (ca. 1812), the show will feature a selection



Work by Russell Glassworks

of fine, artisan pieces in clay, glass, fiber and wood. Some of the items you will find include pottery, hand-folded Moravian stars, hand-blown glass, woodwork, soaps, candles, specialty teas and coffees, dog treats, herbed jams and syrups, candies

continued on Page 20