

Redux Contemporary Art Center in Charleston, SC, Offers Works by Becca Barnett and Michelle Jewell

Redux Contemporary Art Center in Charleston, SC, will present *Rufous: The Stuff of Life*, a two-woman exhibition by Becca Barnett and Michelle Jewell, from Feb. 12 through Mar. 28, 2015. An artist's talk will be given on Feb. 12, at 6pm and a reception will be held from 6:30-9pm.

Rufous /ru-fas/ is a color that may be described as reddish-brown or brownish-red, as of rust or oxidised iron.[1] (Wikipedia.org) A large number of animals are named for this color, like the Rufous Hummingbird or Rufous-Crowned Sparrow. Many animals begin their infant form in this color and later mature into their breed's color.

Becca Barnett and Michelle Jewell will transform Redux with their own brand of 'stuffed animals' - Barnett is a taxidermy artist; Jewell creates handmade plush creatures; both range from the sweet to the slightly macabre.

Barnett's company, Sisal & Tow: Fine Fabrication, repairs and rejuvenates vintage taxidermy pieces, creates custom taxidermy, dioramas, and installations for individuals and organizations ranging from natural history museums to local restaurants and businesses.



Work by Michelle Jewell, detail

Jewell's company, Finkelstein's Center Toys, creates handmade children's toys that are imbued with both character and style, and are wildly popular. Her custom pieces are mind-blowing.

Rufous: The Stuff of Life presents a rare opportunity to see their artistic work displayed side by side, created from their own minds, without the hindrances of the marketplace. This exhibition is also an exploration of the similarities of their production methods while creating a dialogue between their artwork.

Both artists will tackle similar projects, created in both collaboration with and isolation from the other artist, to highlight and celebrate their similar yet very different media.

Becca Barnett grew up in Spartanburg, SC, where as a child she turned the entire basement of her family's home into an interactive diorama of a rainforest. In 2009, she received a BFA in Illustration from the Rhode Island School of Design.

After RISD, Barnett moved to New York City and worked at the American Museum of Natural History and created display items for traveling exhibits (think: 50-foot dinosaur!) She also worked for a metalsmith and a taxidermist.

In 2011, Barnett moved to Charleston to work for the SC Aquarium and was a



Work by Becca Barnett

lead fabricator in the Madagascar Journey exhibit. After much soul-searching and lots of art gigs that were just not permanent enough, she decided to create a job for herself in 2012. She started Sisal & Tow: fine fabrication. Specializing in model-making, props, decor and taxidermy, Becca is now a full-time artist, creating one of a kind paintings and installations for restaurants, offices, events and museums.

Michelle Jewell inherited an affinity for sewing from her mother whose been stitching since before she can remember. Raised in the upstate, Jewell always enjoyed crafting, writing and illustrating short stories, making flipbook animation and letting her imagination run wild in the forests near her house.

In 2010 Jewell left her job to follow a dream of becoming a creative business owner. Combining her love of illustration and sewing, Finkelstein's Center Toys was formed. Since starting her toy design company she has constructed over 200 commissioned art dolls and expanded the business to stores in three countries.

Using a combination of new, up-cycled and remnant fabrics, hand embroidery and sewing machine sketching, Jewell's imaginative pastime has developed into unique 2-D and 3-D fiber art prints and sculpture.

Special thanks to Holy City Brewing, Wine Awesomeness, Charleston Beer Exchange, the Redux interns, volunteers, members, and Board.

Redux is a 501(c)3, non-profit organization in Charleston, SC, committed to the cultivation of contemporary art through quality arts education and outreach programming, diverse exhibitions, subsidized studio space for working local artists, and a multidisciplinary approach to the creative dialogue between artists and audience. We are home to the city's only public print studio and darkroom. Redux offers over 100 classes annually in fine arts education, taught by professional, working artists. As a member of Redux, you can enjoy discounts on classes, merchandise, early notice/discounts on special events, lectures, and much more.

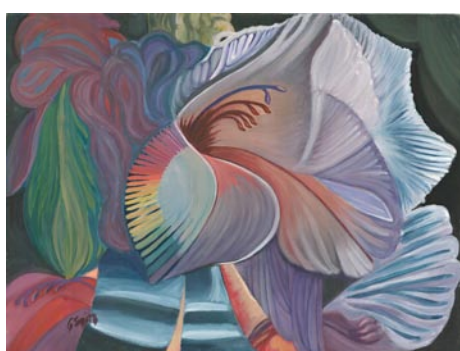
All Redux exhibitions are free and open to the public. Although PARKING is not available at Redux, there is on-street parking throughout downtown as well as two parking garages in close proximity.

For further information check our SC Institutional Gallery listings, call the Center at 843/722-0697 or visit (www.reduxstudios.org).

City of North Charleston, SC, Offers Works by Goose Creek Artists Guild

The City of North Charleston's Cultural Arts Department is pleased to announce that works by members of the Goose Creek Artists Guild will be on exhibit at the North Charleston City Gallery from Feb. 2-28, 2015. A reception will be held on Feb. 5, from 5-7pm. Many of the exhibiting artists will be present and refreshments will be served. The public is invited to attend.

The Goose Creek Artists Guild, founded in 1982, will present its 32nd Annual Judged Show featuring two-dimensional works in a variety of subjects and mediums. Comprised of artists from Berkeley, Dorchester, and Charleston counties, guild members from all levels of expertise express their talents in oil, watercolor, acrylic,



Work by Gary Smith

pastel, drawing, and mixed media.

Ribbons for Best of Show as well as first, second, and third place in multiple

continued on Page 22

Public Sculpture Belongs To ALL OF US

Sculpture in the South
SUMMERVILLE, SC

Enjoy the Permanent Public Sculpture Collection
AZALEA PARK • SUMMERVILLE



Sculpture in the South
P.O. Box 1030
Summerville, SC 29484
askus@sculptureinthesouth.com
843.851.7800

More than 25 sculptures have been permanently installed in and around Summerville for your enjoyment. Bring a picnic to Azalea Park and make a game of finding them. A sculpture location map is available on our web site at SculptureInTheSouth.com.



South Carolina
Just right.

Whimsy Joy® by Roz

Therapeutic Expressions for All Ages

Bursting with Love

"A few Years back, We went to a Fair..."

"Whimsy Joy was surprised, that We Won a Prize.

We are Happy Fish and We are in Love. See us Kissing with a Heart above."

Check my website for new whimsies!



Images are available on:

- Prints
- T Shirts
- Aprons
- Calendars
- Children's Paint Smocks
- Notecards
- Decals
- Stickers
- Mousepads



I am gorgeous...
an't you see I'm really cute
Put me on your personal
mousepad for \$12.00



All images are copyrighted

Rosalyn Kramer Monat-Haller

M.Ed., LLC

Counseling for Children, Adolescents, & Adults

Mother, Grandmother, Daughter, Friend, Psycho therapist and Artist who uses color and whimsical imagination to create joyful art for children of all ages

www.whimsyjoy.com

843-873-6935