

SCALA

Surrealist Painter



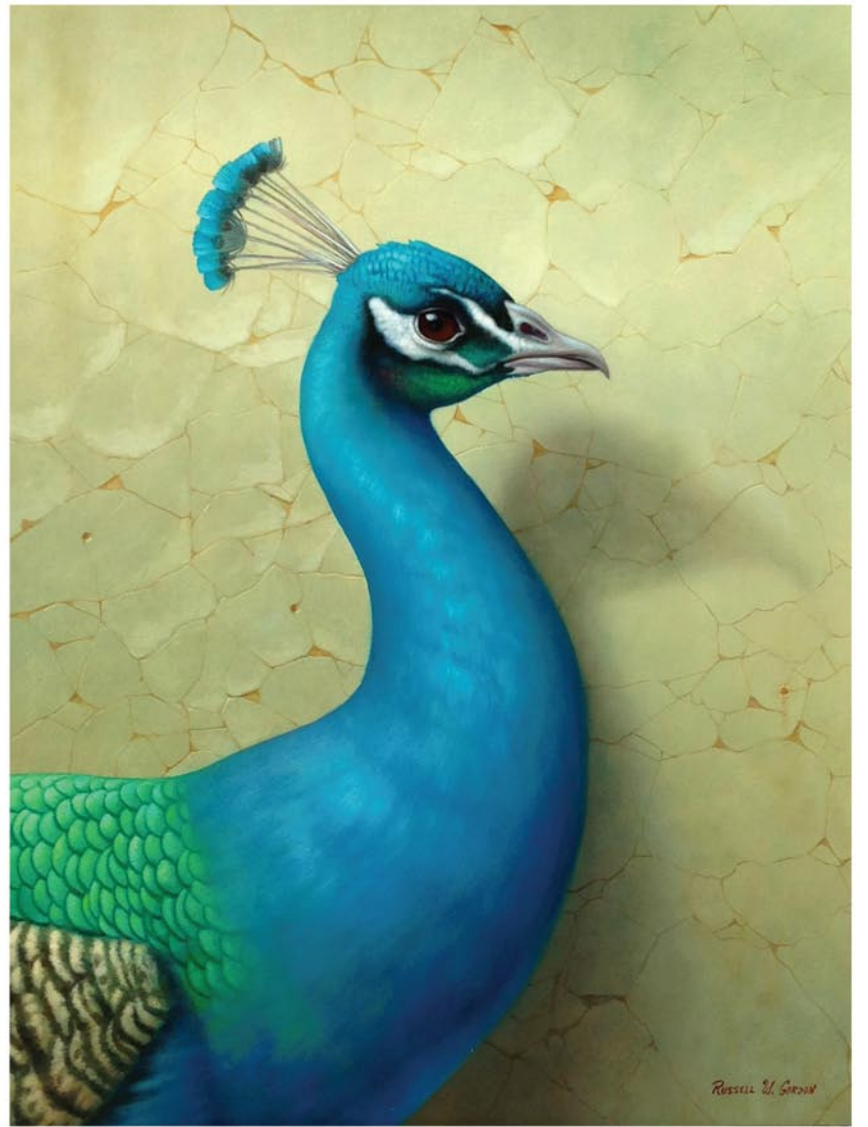
"Street Crossing"

www.peterscala.com

Studio:

843-225-3313

WELLS GALLERY



RUSSELL GORDON, *BEAUTY CONTEMPLATING CHAOS*, 14x11, OIL ON LINEN

THE SANCTUARY AT KIAWAH ISLAND

1 SANCTUARY BEACH DR, KIAWAH, SC 29455

843.576.1290

WWW.WELLSGALLERY.COM

Some Exhibits That Are Still On View

Our policy at *Carolina Arts* is to present a press release about an exhibit only once and then go on, but many major exhibits are on view for months. This is our effort to remind you of some of them.



Work by Jim Campbell

USC-Upstate in Spartanburg, SC, is presenting *Shifting Plates*, the second print exhibition featuring works by 16 South Carolina printmakers, directed by Steven Chapp of Black Dog Press and Studio, on view in the Curtis R. Harley Gallery, through Feb. 20, 2015. *Shifting Plates*, is a two part print exhibition consisting of 32 original prints by 16 South Carolina printmakers. The artists in the group are: Kent Ambler, Jim Campbell, Marty Epp-Carter, Kevin Clinton, David Garhard, Catherine Labbé, Mark Mulfinger, Chris Koelle from Greenville; Jim Creal, Andrew Blanchard from Spartanburg, Steven Chapp from Easley, Katya Cohen and Robert Spencer from Clemson, Barbara Mickelson from Belton, J.P. Tousignant from Central and Mary Gilkerson from Columbia. For further information call Mark Flowers at 864/503-5848.

The Cabarrus Arts Council in Concord, NC, is presenting *Interactive Lines*, an



Work by Tim Christensen

exhibition that explores the transformation of drawing as a medium, featuring works by nine artists, on view in The Galleries, located in the Historic Cabarrus County Courthouse, through Mar. 6, 2015. The exhibition includes two- and three-dimensional works by nine artists: David Bonagurio, Sue Bryan, Erin Canady, Tim Christensen, Tim Ford, Fred Johnston, Jennifer Mecca, Janvier Rollande and Art Venti. For further call The Galleries at 704/920-2787 or visit (www.CabarrusArtsCouncil.org).



Work by Jonathan Brilliant

The SC State Museum in Columbia, SC, is presenting, *Building a Universe*, featuring creations by artists whose work deals with space and the universe, either directly or conceptually. *Building a Universe* can be seen in the Lipscomb Gallery through Mar. 15, 2015. The exhibit

continued above on next column to the right

includes artwork from 16 South Carolina artists, many of whom created pieces specifically for this exhibit. The works represent a wide variety of media, including installation art, painting, printmaking, collage, sculpture and mixed media work. Artists included in the exhibition include: Jonathan Brilliant, Paul Martyka, Molly B. Right, Robert Courtright (1926-2012), Enid Williams, Peggy Rivers, Hollis Brown Thornton, Jocelyn Chateauvert, John Acorn, Aldwyth, Virginia Scotchie, Jon Prichard, Mary Edna Fraser, Greg Fitzpatrick, Kirkland Smith, and Gene Speer. For more info call the Museum at 803/898-4921 or visit (<http://scmuseum.org/>).

The Franklin G. Burroughs-Simeon B. Chapin Art Museum in Myrtle Beach, SC, is presenting *Voices of the Island: The Cuban Art Collection of Reynier Llanes*, on view through Apr. 23, 2015. When artist Reynier Llanes moved to Charleston, SC, in 2009, he brought his artistic inspiration with him: his home in Pinar del Rio, a mountainous, biologically and artistically rich region at the westernmost end of Cuba. Passionate about sharing his cultural heritage with his new country, he has done so not only through his own



Work by Reynier Llanes

artwork, evoking themes and images from his upbringing, but also by collecting and selling the works of other artists from Pinar del Rio. For further information call the Museum at 843/238-2510 or visit (www.MyrtleBeachArtMuseum.org).

 **Carolina Arts is now on Twitter!**



Sign up to follow Tom's Tweets, click below!

twitter.com/carolinaarts