

RedSky Gallery Opens New Location in Charlotte, NC, Offers Works by Andrew Linton, Alice DeLisle, and Lisa Creed

RedSky Gallery will be celebrating the opening of its new location on Mar. 25, 2011, along with a new exhibition of ceramics by Andrew Linton and Alice DeLisle, and paintings by Lisa Creed. Join us for a reception on Friday, Mar. 25, from 6-8:30pm at RedSky Gallery, 1523 Elizabeth Avenue, Suite 120, in Charlotte, NC. The show runs through May 10, 2011.

Linton has BFAs in Art Education and Painting, and has assisted renowned artists including Ron Meyers and Cynthia Bringle.

Alice DeLisle uses texture, contrast and color in creating forms that are aesthetically pleasing and somewhat humorous. Her latest work explores the symbolism of towers and individuals escaping from them. DeLisle has a PhD in Biology and until three years ago, worked in the biotechnology industry. She has transitioned from using her active imagination in science to working full time as a ceramic artist.

Lisa Creed's mixed-media paintings are both abstract and representational. She wants to engage the viewer to see the whole work, to deconstruct it, then see the whole work again. Creed's work is in personal and corporate collections across the country.

RedSky Gallery features original works on paper and canvas, sculpture, ceramic, glass, studio furniture, art-to-wear, jewelry, and more.

Over 500 regional and national artists are represented at two gallery locations, on Elizabeth Avenue and uptown in The EpiCentre.

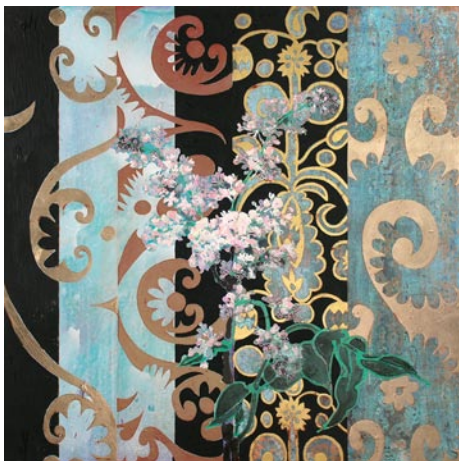
For further info check our NC Commercial Gallery listings, call 704/377-6400 or visit (www.redskygallery.com).



Works by Alice DeLisle

Andrew Linton's current works include copper flash raku as well as animal and figurative imagery. He gains great inspiration and his work develops in new directions. His ceramics have been featured in the "500 Series" of books, most recently released, *Surface Design for Ceramics*.

Jerald Melberg Gallery in Charlotte, NC, Offers Works by Robert Kushner



Work by Robert Kushner

Jerald Melberg Gallery in Charlotte, NC, is presenting the exhibit, *Flora Dreams*, featuring paintings and works on paper by Robert Kushner, on view through Apr. 9, 2011.

Kushner emerged on the American

art scene in the early 1970s and quickly became known for his richly textured and opulent paintings. Since the late 1980s his artistic focus has been centered around flowers and plant forms. Kushner frequently visits botanical gardens for inspiration, often scheduling trips in order to view flowers of particular interest at their peak.

Kushner has exhibited extensively and his work can be found in the collections of many prestigious institutions, including the Museum of Modern Art, the Metropolitan Museum of Art and the Whitney Museum of American Art in New York, the San Francisco Museum of Modern Art, the National Gallery of Art in Washington, DC, the Tate Gallery in London and the Uffizi Gallery in Florence.

For further information check our NC Commercial Gallery listings, call the gallery at 704/365-3000 or visit (www.jeraldmelberg.com).

Elder Gallery in Charlotte, NC, Offers Works by Ernest Walker & Leon Makielski

Elder Gallery in Charlotte, NC, is presenting the exhibit, *Walker Meets Makielski - Old is New Again*, featuring works by Ernest Walker and Leon Makielski, on view through Mar. 4 - 29, 2011. A reception will be held on Mar. 4, from 6-8pm.

The exhibition will present paintings from the collections of two early twentieth century painters. Leon Makielski was born in Pennsylvania in 1885 and Ernest Walker was born in England in 1892. Both achieved success as professional painters during their life time and left significant collections of paintings which have become the subject of Elder Gallery's exhibition.

While a student at the Chicago Art Institute, Makielski spent his summer months at Eagle's Nest Art Colony in Oregon, IL. Eagle's Nest Camp, situated west of Chicago, was the most important summer art center in Illinois and attracted such notables as the Chicago sculptor

Larado Taft, the painters Ralph Elmer Clarkson and Charles Francis Browne, and the influential writers Hamlin Garland and Henry B. Fuller.



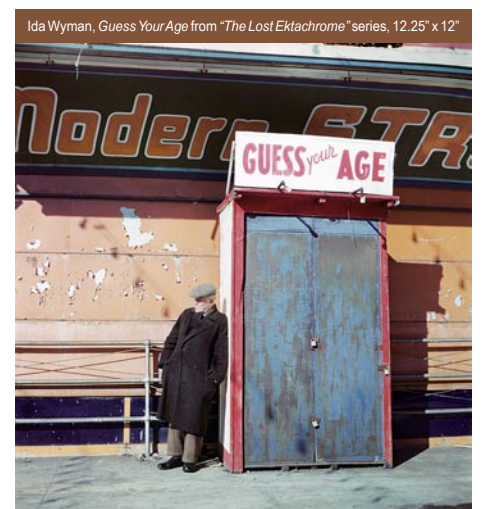
Work by Leon Makielski

In 1908, Makielski became an assistant instructor at the Art Institute of Chicago and was awarded the school's top prize, the John Quincy Adams Traveling Scholarship. On Apr. 19, 1909, he sailed

continued above on next column to the right



lark & key
128 E. Park Ave, Ste B, Charlotte NC 28203
704.334.4616 (southend)
www.larkandkey.com
artwork pottery jewelry inspiration



ON VIEW
Surroundings: Photography x 4
Linda Foard Roberts
Alice Sebrell
Sonia Handelman Meyer
Ida Wyman

HODGES TAYLOR art consultancy
Providing expertise to businesses and individuals. Connecting the public with artists in meaningful ways through projects, programming and community partnerships.
401 North Tryon Street
Charlotte, North Carolina 28202
704.334.3799
www.hodgestaylor.com

for Paris, where he established headquarters for the next four years. He enrolled at the Academie Julian and the Grande Chaumiere, studied with Henri Martin and Richard E. Miller, and exhibited his work at the Paris Salons of 1910 and 1911. Makielski spent his spare time painting in the city's parks, on the Seine, and in the countryside around Paris, especially Giverny and Versailles

Makielski returned to the United States in 1913 and joined the faculty of the University of Michigan in Ann Arbor. He built a successful career as an art educator, instructor and painter.

In 1913, Ernest Walker moved to the United States and attended the Art Student's League in New York City. He worked as a freelance artist and, after serving in the United States Army, returned to England, married and painted throughout Great Britain for a number of years. In 1930, Walker returned to Long Island and became a freelance artist and contributed to *Fortune*, *Woman's Home Companion*, *McCall's*, *Country Life* and *Pictorial Review*.



Work by Ernest Walker

In 1935, the artist was commissioned by *House & Garden Magazine* to paint interiors of manor homes in England and a number of his paintings were shown on the cover of the magazine. The artist was invited to exhibit his work at the Chicago Art Institute in 1938 and at the Philadelphia Museum of Art's Watercolor Exhibition of 1939. In 1941, Walker was chosen

to participate in The Whitney Museum's Exhibition for Contemporary Art.

Elder Gallery's exhibition is comprised of paintings completed in the United States between 1915 and 1950.

For further information check our NC Commercial Gallery listings, call the gallery at 704/370-6337 or visit (www.elderart.com).

Editorial Commentary

continued from Page 4 / Back to Page 4

directing readers to the site for the new O. Winston Link Museum operated by the Historical Society of Western Virginia, in Roanoke, VA (www.linkmuseum.org).

It was amazing how much people loved this guy's photographs of old trains, but it's not really - since they are amazing photographs.

Since July 1999, a page about O. Winston Link has been in the top 10 - 15 pages requested each month - for almost 12 years. Now that is amazing.

So, when I saw that an exhibit of his photographs were going to be on view again in the Carolinas - I jumped on that and requested that the Reynolda House Museum of American Art send us some images. And they did.

Now I don't mind you looking at his photographs in this paper and on our website - it's good for our ratings, but if you're in the Winston-Salem area, I'd go see this exhibit. In fact, I'd make plans to go see it. You won't be disappointed.