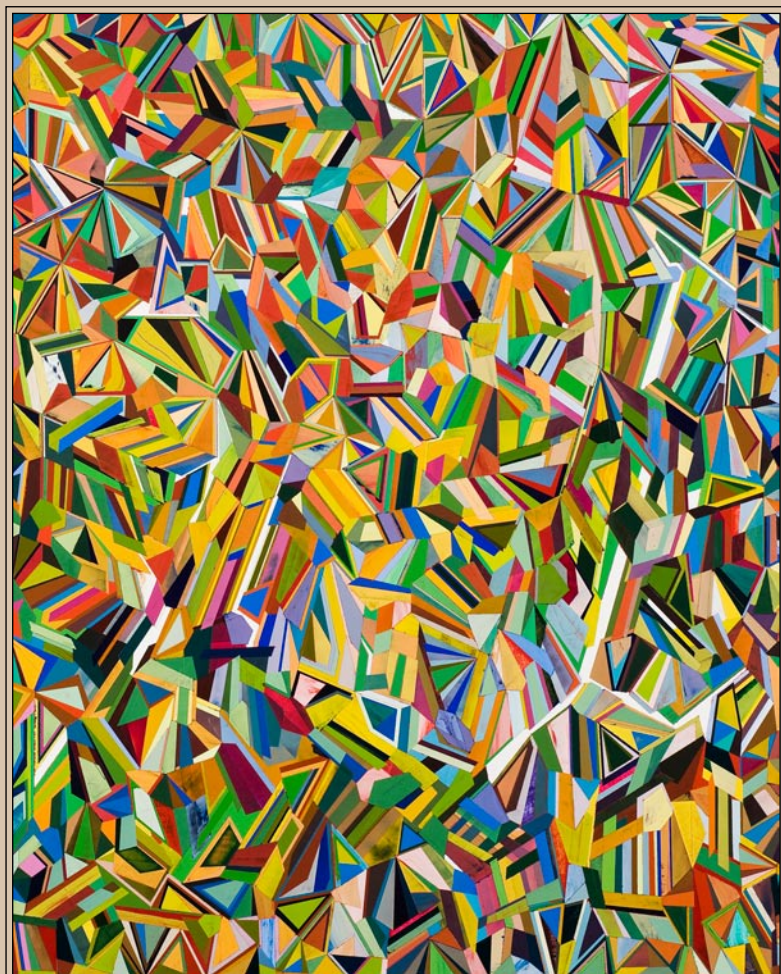


PAUL YANKO AND ENID WILLIAMS

BY-TURNS

Paul Yanko
Slide Module Fan, 2009-10
acrylic on canvas
50 x 40 inches



Enid Williams
Repurposed, 2011
mixed on board
30.5 x 29.5 inches



FEBRUARY 9 - MARCH 17, 2012

RECEPTION: THURSDAY, FEBRUARY 9, 7 - 9PM • ARTISTS' TALK: 8PM

COFFEE AND CONVERSATION WITH ENID WILLIAMS AND PAUL YANKO: SATURDAY, MARCH 3, 11 - NOON

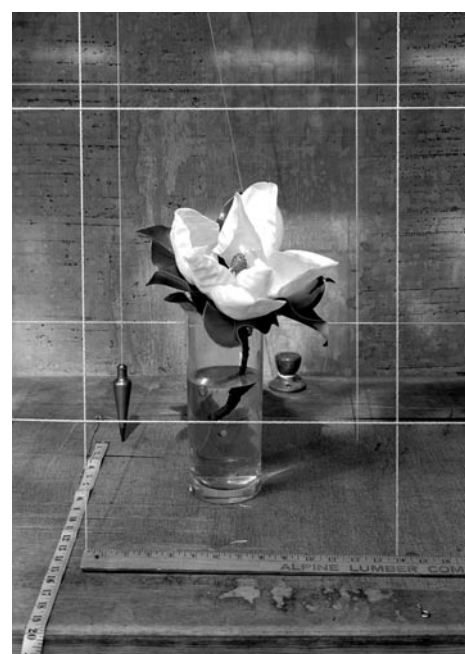
HAMPTON  GALLERY LTD

3110 Wade Hampton Blvd. Suite #10 • Taylors, SC 29687 • 864-268-2771

sandy@hamptoniigallery.com • www.hamptoniigallery.com • Hours: Tues. - Fri., 1 - 5 pm; Saturday, 10 am - 5 pm

RIVERWORKS Gallery in Greenville, SC, Offers Works by Anderson Wrangle

RIVERWORKS Gallery in Greenville, SC, will present the exhibit, *Interruption*, featuring photographs by Anderson Wrangle, on view from Mar. 2 through Apr. 15, 2012. A reception will be held on Mar. 2, from 6-9pm. The gallery will be closed Apr. 3 - 9 for Spring Break.



Work by Anderson Wrangle

The still life has been beloved by artists for hundreds of years to capture the beauty of nature or to flaunt wealth or to preach moderation. Wrangle's photographs continue that tradition but with the interruption of the present. He photographs the fragile magnolia blossom, *Double Square/Magnolia Bloom* targeted by the strings, measuring devices and mud caked plywood usually found on a construction site.

Wrangle's photographs are hauntingly cold and we are achingly aware that the flower or the tree has been cut. His natural subjects like the *Snow Beet* are victims snatched from the earth now lined up in the snow. Wrangle's photographs go beyond the still life moment to suggest a tableau or scene, an interruption within a narrative, especially in the photographs of tools suspended in nature, *Double Barrow Suspension* or *Frozen Axe #2*. All the photographs depict human interruption, inversion and control of nature. All of Wrangle's "Interruptions" are rich and elegant in the still life tradition.

Wrangle has exhibited widely including FotoFest, Lawndale Art Center and Rudolph Projects/Artscan Gallery. He received a 2010 Clemson University Research Grant for a current project looking at the Chatooga and Savannah rivers. In 2008 he was nominated for the Baum Award and the ARTHouse Texas Prize. In 2005 he was a fellowship resident at the Vermont Studio Center

Wrangle work is in many private collections and also the collection of the Museum of Fine Arts in Houston. He is currently Assistant Professor of Photography and digital Media at Clemson University.

RIVERWORKS Gallery is operated by and for the faculty and students of the Department of Visual and Performing Arts at Greenville Technical College. The gallery is located along the scenic Reedy River at Art Crossing in downtown Greenville. Look for the red umbrella.

For further information check our SC Institutional Gallery listings, call the gallery at 864/271-0679 or visit (www.gvltec.edu/vpa/).

Clemson University in Clemson, SC, Offers Works by Regional Photographers

Clemson University in Clemson, SC, is presenting the exhibit, *Alignments*, featuring photographs by Polly Gaillard, Michael Marshall, Adam Jacono, Constance Thalken, and Nancy Floyd, on view in the Lee Gallery through Mar. 15, 2012. On Thursday, Mar. 1, there will be a guest artist lecture from participating artist Adam Jacono at 6pm. An artist reception will follow from 7-9pm.



Work by Nancy Floyd

A selection of Nancy Floyd's work from her collection, *She's Got a Gun* will be on view in the exhibit. The photographic series comprises powerful, compelling images of her research on the topic of women and guns in three specific areas: pleasure, power and profession. Images of women in the military, Olympic event shooters, female police officers, women who own for purposes of self-defense and many others are included in the exhibition.

Floyd purchased her first gun in 1991, right after Desert Storm, largely as a way to connect with her brother who had wanted to be a gunsmith. He died in Vietnam when she was 12. The exhibition of photographs explores fifteen years of her experience in the gun world.

Adam Jacono's artwork examines the

relationship of advertising, consumerism and mass media to American culture. His artistic practice combines alternative and traditional photographic processes to reference history, in combination with digital photography, video, web, performance, and printmaking.

Jacono's work is technically multidimensional and utilizes multiple modes of production, allowing concept to shape the end product.

Pressure Points is a photographic series from Polly Gaillard exploring motherhood, memory and loss. She began photographing her daughter after her divorce, being interested in the awkward moments they shared as her child played. Gaillard was interested in how the divorce played out in both of their lives in subtle and startling ways. As she contemplated her daughter from behind windows, curled in a corner, or in the shadow of her house, she wondered, "Who is this person that lives with me?" She was intrigued by this half-life they shared due to custody obligations.



Work by Polly Gaillard

Constance Thalken's work involves photography, video, sound, performance and installation. The overarching concern of her work is the complexities of loss. She often uses animal imagery and references to the natural world to address ideas about death, transformation and the cycles of life.

continued on Page 17

Don't see a press release about your exhibit or you gallery's exhibit?
You have to see it to us by deadline to get it in.
The deadline each month to submit articles, photos and ads is the 24th of the month prior to the next issue. This will be Mar. 24th for the April 2012 issue and Apr. 24 for the May 2012 issue. After that, it's too late unless your exhibit runs into the next month.