

"SPRING CLEANING"

at

SHAIN
GALLERY

55 PAINTINGS
AT UNBELIEVABLE PRICES!!!

WORKS BY:
KIM SCHUESSLER, JANE SCHMIDT
CHRISTY KINARD, ERIC OLSEN
CURTIS JAUNSEN, HENRY BARNES
CONNIE WINTERS, AMY DOBBS

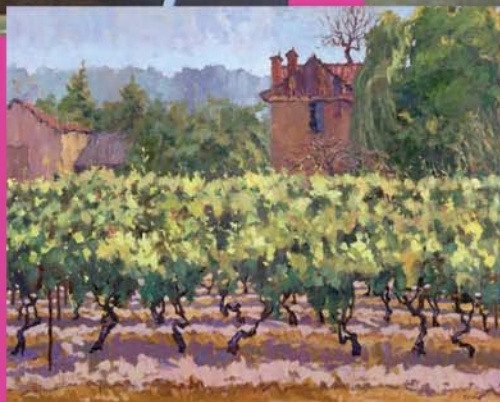
KICK OFF
THURS. MARCH 14TH AT 6PM
GALLERY WILL CLOSE TO REHANG
AND REOPEN AT 6PM

SALES WILL CONTINUE
FRIDAY AND SATURDAY!
\$20 SPECIAL PREVIEW ADMISSION FEE
10% OF SALES TO BENEFIT SAFE ALLIANCE



safealliance
WHERE HOPE & HEALING BEGIN

2823 SELWYN AVE CHARLOTTE NC 28209 704 334 7744
SHAINGALLERY.COM SHAINART@EARTHLINK.NET



Bechtler Museum of Modern Art in Charlotte, NC, Offers Exhibition of Connected Artists

The Bechtler Museum of Modern Art in Charlotte, NC, is presenting *Artistic Relationships: Partners, Mentors, Lovers*, featuring more than 80 works by Joan Miró, Alexander Calder and others who were connected by the creative spirit and personal circumstances, on view through July 29, 2013.

The story of the Bechtler art collection is one of relationships. There were the relationships members of the Bechtler family forged with the modern artists they collected. And then there were the relationships some of the artists in the collection had with each other.



Jean-Paul Riopelle, *Composition*, 1956, oil on canvas © 2013 Artists Rights Society (ARS), New York / SODRAC, Montreal

The Bechtler collection includes works by several artists who knew each other well, who often exhibited together, and who learned from each other in the context of shared stylistic movements, personal experiences and intellectual inquiry.

Artistic Relationships: Partners, Mentors, Lovers is an exhibition of 85 works by artists such as Joan Miró, Bridget Riley, Fernand Léger, Le Corbusier, Barbara Hepworth and Ben Nicholson who were not only connected by the creative spirit but also by personal circumstances. On view are paintings, prints, textiles and sculpture

that reflect the 20th century's experimentation with abstract art and the human figure. The works reveal a variety of approach, intent and result.

Artistic Relationships: Partners, Mentors, Lovers marks the first time that works by celebrated British artist Henry Moore are on view in the Bechtler Museum of Modern Art. The works include six prints from the museum's permanent collection and one small-scale sculpture on loan from founding museum patron Andreas Bechtler. Also on view for the first time in the museum are works from the permanent collection by French avant-garde painter Jean Dubuffet. The relationships presented in the exhibition cross nationality and generation and are concentrated primarily on European figures but also include important American artists Alexander Calder and Sam Francis. Bringing whimsy and dynamism to the exhibition are works by Niki de Saint Phalle and Jean Tinguely, popular artists from the Bechtler collection who were married to one another. Their 30-year relationship was ignited by passion but sustained by their artistic collaborations.

The focus of the show is to reinforce the importance of artists' relationships with each other as they mature as creative figures. The relationships presented in the exhibition take a variety of forms from love affairs and marriages to lifelong friendships and teacher/student pairings.

"This is not an exhibition about reactionary relationships but rather relationships of sympathetic accord and mutual experimentation," said Bechtler Museum of Modern Art President and CEO John Boyer.

These pairings prove that the creation of visual art isn't always a solitary endeavor. Oftentimes a spark ignites from relationships between artists whether the relation-

continued above on next column to the right

ships are defined by intensity and brevity or comfort and longevity.

"We tried to balance in the exhibition a real sense of an awareness of biography to the degree that it informs our understanding of the comparisons that are being made," Boyer said. "It re-enforces the notion that 20th-century modernism was very much the result of this complex web of relationships. In many instances the impact that these artists had on one another was greatly enhanced because of the nature of their personal connections."

Artist pairings in *Artistic Relationships: Partners, Mentors, Lovers*:

Friendships: Jean Dubuffet and Karel Appel; Joan Miró and Alexander Calder; Fernand Léger and Le Corbusier; Alfred Manessier and Gustave Singier; & Jean-Paul Riopelle and Sam Francis.

Teachers/Students: Roger Bissiere and Maria Helena Vieira da Silva; Bernard Meadows and Henry Moore; & Victor Pasmore and Bridget Riley.

Couples: Ben Nicholson and Barbara Hepworth; Jean Tinguely and Niki de Saint



Sam Francis, *Composition: Yellow and Red*, ca. 1956, watercolor and gouache on paper © 2013 Sam Francis Foundation, California / Artists Rights Society (ARS), NY

Phalle; & Hans Hartung and Anna-Eva Bergman.

The Bechtler Museum of Modern Art is dedicated to the exhibition of mid-20th-century modern art. It is named after the family of Andreas Bechtler who assembled and inherited a collection created by seminal figures in modernism.

For further information check our NC Institutional Gallery listings, call the Museum at 704/353-9200 or visit (www.bechtler.org).

UNC-Charlotte in Charlotte, NC, Features Works by Angela Franks Wells and Jason Lee

UNC-Charlotte in Charlotte, NC, will present two solo exhibits including: *Angela Franks Wells: Copper Mine* and *Jason Lee: Structured Environments*, both on view in the Rowe Main and Upper Galleries, from Mar. 6 through Apr. 3, 2013.

Angela Franks Wells is a photography-based artist who specializes in 19th-century photographic processes and is a master at copperplate photogravure. Her work explores a range of ideas including the precious vs. ephemera, labor and craftsmanship, beauty, and place and/or space.

"The nature of the process embraces traditions of photography and printmaking, and requires a great deal of patience, tenacity, and time," Wells says of copperplate

photogravure. "*Copper Mine* provides a visual record of my journey to better understand this essential material and serves as a connection between industry and culture."

Wells was born and raised in California and received her BA in Studio Art and Psychology from Scripps College. After spending three years teaching with Teach for America in rural North Carolina, she moved back west. In 2006, Wells received her MFA from Arizona State University. Currently, she is assistant professor of photography at East Carolina University in Greenville, NC.

Jason Lee, a multi-media sculptor and installation artist, incorporates a wide variety of materials and techniques into his

continued on Page 44