

SC Institutional Galleries

continued from Page 45

that represents their tribe, history, and culture. Curated by Chief Gene Norris and Victoria Norris, this exhibit is the second at the Center to be curated by one of the South Carolina tribes. **Rose Gallery, Through Feb. 1, 2018** - "Clay Pit to Fire Pit: From the Beginning to the End," featuring an exhibit of works by Keith Brown's artist-in-residence. Funded, in part, by the South Carolina Arts Commission, the Native American Studies Center's artist-in-residence program allows the NASC to bring in Native American Artists to work within our galleries providing demonstrations and lectures for students and visitors. This exhibition showcases the work completed during our third residency with Keith "Little Bear" Brown, along with complimentary pieces from his portfolio that influenced the pottery created at the Center. **Ongoing** - The Center is 15,000 square foot facility in historic downtown Lancaster. Guests will have the opportunity to tour the NAS Center's gallery spaces, archives, classrooms, and archaeology, language, and audio-visual labs. Home to the world's largest collection of Catawba Indian pottery, the NAS Center will offer exhibits of regional Native American Art, classes and programs focused on Native American history, culture, archaeology, folklore, and language. Hours: Tue., Wed., Fri., & Sat., 10am-5pm; Thur., 10am-7pm; of Mon. by appt only. Contact: 803/313-7172 or visit (<http://uslanclaster.sc.edu/NAS/>).

Marion

Marion County Museum, 101 Wilcox Avenue, Marion. **Ongoing** - Changing exhibits are displayed in two galleries downstairs. These can be local exhibits, or traveling exhibits from the South Carolina State Museum's collections. The Magnolia Room of the museum is furnished with lovely antiques once used in the Aiken-Rhett House in Charleston. These pieces were a gift from the Charleston Museum. The upstairs galleries feature a turn-of-the-century classroom, a farm room, and a variety of displays concerning the people and places of Marion County. Hours: Tues.-Fri., 9am-noon & 1-5pm. Contact: 843/423-8299 or at (<http://www.marionsc.org/museum>).

McCormick

The MACK, McCormick Arts Council Gallery, 115 Main Street, located in the historic Keturah Hotel, McCormick. **Ongoing, The Artisans Gallery Shop at the MACK** - Featuring works of over 30 artisans including paintings, pottery, jewelry, jackets, gourds, woodworking, textiles, soaps and more. Hours: Mon.-Sat., 10am-4pm. Contact: 864/852-3216 or at (<http://mccormickarts.org/>).

Mount Pleasant

Sweetgrass Cultural Arts Pavilion, Mount Pleasant Memorial Waterfront Park, 99 Harry M. Hallman, Jr. Blvd., under the bridge, Mount Pleasant. **Ongoing** - The pavilion is a tribute to the generations of men and women who have carried on this African tradition for more than three centuries. Kiosks and panels tell the history of this unique craft, and the open-air facility provides a venue for local basketmakers to display and sell their wares. Hours: daily, 9am-5pm. Contact: 800/774-0006 or at (www.townofmountpleasant.com).

Myrtle Beach / Grand Strand

Chapin Park, 1400 Kings Hwy and 16th Ave. N., Myrtle Beach. **2017 Dates include: Apr. 15 & 16; June 24 & 25; Oct. 7 & 8; and Nov. 4 & 5** - "45th Annual Art in the Park - Show & Sale," sponsored by Waccamaw Arts and Crafts Guild. We will have over 60 artists from the East Coast, as far away as TN, with about 20 of those artists from our local area. Typical art will include paintings, woodworking, photography, jewelry, fabric, glass, metal, pottery, leather and stone. Free admission. Child and Pet Friendly! For info call JoAnne Utterback, 843/446-3830 or at (www.artsyparksy.com).

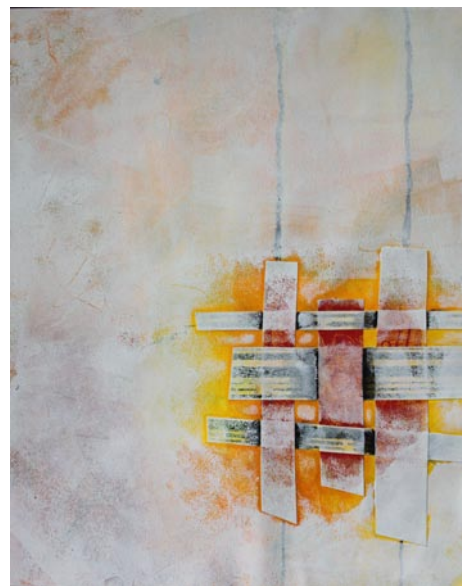
Valor Memorial Park, 1120 Farrow Parkway, The Market Common, Myrtle Beach. Valor Park, at The Market Common, in Myrtle Beach. **2017 Dates include: Apr. 22 & 23 and Nov. 11 & 12** - "Waccamaw Arts and Crafts Guild's 45th Annual Art in the Park". We will have over 60 artists from the East Coast and as far away as Tennessee with about 20 of those artists from our local area. Typical art will include paintings, woodworking, photography, jewelry, fabric, glass, metal, pottery and stone. No admission charge. Child and Pet Friendly! Contact: JoAnne Utterback at 843/446-3830 or (www.artsyparksy.com).

Franklin G. Burroughs • Simeon B. Chapin Art Museum, 3100 South Ocean Blvd., beside Springmaid Beach, Myrtle Beach. **Through Apr. 23** - "Gee's Bend: From Quilts to Prints,"

examines the work of four well-known Gee's Bend quiltmakers and their recent exploration into the art of printmaking. In the isolated African-American hamlet of Gee's Bend, AL, located along the Alabama River, women made quilts to keep themselves and their children warm in often unheated houses that lacked running water, telephones and electricity - from the post-Civil war era well into the 20th century. Along the way they developed a distinctive style, noted for its lively improvisations and geometric simplicity. These quilts, which came to the notice of the art world in the 1990s, are considered to be one of the most important African-American visual and cultural contributions to the history of art within the United States. Additional public programs to accompany the exhibit are planned for spring 2017. **Through Apr. 23** - "The Fabric of Our Collection," featuring 12 works from our rich Permanent Collections, pieces that reference and explore fabric and other forms of fiber in a variety of ways. Included is "Burgess, The Legacy", a photo-collage quilt by Carolynne Miller and three works by Jonathan Green. Hours: Tue.-Sat., 10am-4pm & Sun., 1-4pm. Contact: 843/238-2510 or at (www.myrtlebeachartmuseum.org).

Seacoast Artists Gallery, located at The Market Common, 3032 Nevers Street, Myrtle Beach. **Ongoing** - features the works of over 70 local artists of the Seacoast Artists Guild of South Carolina, a nonprofit visual arts organization dedicated to advancing excellence in the visual arts through teaching, exhibits, workshops and special events. Guild membership benefits include monthly meetings, programs & presentations; and opportunities to participate in Spring & Fall Art Shows and Web Gallery. Artwork includes oil, acrylic, watercolor, fiber art, mixed media, clay, metal engraved jewelry, sculpture, assemblage, and fine art photography. Art classes and workshops offered. Hours: Mon.-Sat., 10am-6pm and Sun., noon-6pm. Contact: 843.232.7009, e-mail at (seacoastartistsgallery@gmail.com) or at (www.seacoastartistsguild.com).

North Charleston



Work by Carole Bruno

City of North Charleston Art Gallery, North Charleston Performing Arts Center & Convention Center Complex, common walkways, 5001 Coliseum Drive, North Charleston. **Mar. 2 - 31** - "41st Annual Judged Show," featuring an exhibit of two-dimensional works by more than 40 members of The Summerville Artist Guild. A reception will be held on Mar. 2, from 5-7pm. Hours: Mon.-Sat., 9am-5pm. Contact: 843/740-5854, or at (<http://www.northcharleston.org/Residents/Arts-and-Culture.aspx>).

ALTERNATE ART SPACES - North Charleston Riverfront Park, 1001 Everglades Dr., The Navy Yard at Noisette (former Charleston Naval Base), North Charleston. **Through Mar. 26** - "11th Annual National Outdoor Sculpture Competition & Exhibition". View 12 thought provoking, outdoor sculptures by established and emerging artists from across the nation in this 11th annual juried competition and exhibition. Twelve artists from three different states were selected by the juror, James G. Davis, ASLA, founder/president of Sculpture in the Landscape, a NC based firm. Hours: daylight hours. Contact: 843/740-5854 or at (<http://www.northcharleston.org/Residents/Arts-and-Culture.aspx>).

Orangeburg

I.P. Stanback Museum and Planetarium, SC State University, 287 Geathers Street, Orangeburg. **Ongoing** - "The Influence of James Brown: His Imprint on Music, Dance, Style and Politics". In 2008, the Stanback was selected to preserve the legacy of James Brown, when museum curators were invited to Brown's Estate in Beech Island, SC, to retrieve items for preser-

vation. The collection boasts an impressive list of items that capture the life and legacy of the 'Hardest Working Man in Show Business.' The collection features costumes, clothing, instruments, unpublished photographs, early cuts of vinyl recordings, handwritten music, awards, trophies and more. Hours: Mon.-Fri., 9am-5pm or by appt. Contact: 803/536-7174 or at (<http://www.scsu.edu/researchoutreach/ipstanback-museumandplanetarium.aspx>).

Lusty Gallery, Orangeburg County Fine Arts Center, Edisto Memorial Gardens, 649 Riverside Drive, Orangeburg. **Ongoing** - Featuring a permanent display of works by Coan Culler, Pernille Dake, Betty Edmonds, Elsie Fogle, Michiko Johnston, Zita Mellon, Barbara Townsend, Isaiah Zagar, and local schoolchildren. Hours: Mon.-Thur., 8:30am-4:30pm & Fri., 8:30am-noon. Contact: Elizabeth Thomas at 803/536-4074 or at (<http://ocfac.net/>).

Pawleys Island, Litchfield & Murrells Inlet

Brookgreen Gardens, US 17, south of Murrells Inlet. **Rainey Sculpture Pavilion, Through Apr. 16** - "Life in the American West". The exhibit showcases sculpture, paintings, prints, and drawings on loan from contemporary artists, collectors, and galleries plus historic works from the Brookgreen collection. **Learning Lab I of the Wall Lowcountry Center, Through Mar. 12** - "Shine On, Gullah. Shine On," featuring an exhibit of story quilts, fabric collages, and prints by fabric chronicler Dorothy Montgomery of Charleston, SC. Her art reflects Gullah history and culture and her Gullah experiences, including language and traditions. Each quilt uses a variety of mediums including fabric and acrylic paints, ink, crayons, embroidery floss, dye sticks, and appliques. **Ongoing** - "Lowcountry: Change and Continuity," a major new exhibit, tells the story of human interaction with this land over the centuries. It features wall size photomurals by SC naturalist photographer Tom Blagden, along with a range of artifacts tracing the history of man's occupation of this extraordinary landscape. **General Gardens, Ongoing** - One of the largest collections of outdoor sculpture in America. This preeminent collection of American representational sculpture includes - 560 works by 240 artists - representing such well-known artists as Charles Parks, Daniel Chester French, Carl Milles, August Saint-Gaudens and Anna Hyatt Huntington. Hours: daily, 9:30am-5pm. Admission: Yes. Admission to Brookgreen is good for seven days. Contact: 843/235-6000, 800-849-1931, or at (www.brookgreen.org).

ALTERNATE ART SPACES - Litchfield Gallery at Applewood House of Pancakes, 14361 Ocean Highway, Litchfield Beach. **Ongoing** - features works of accomplished local artists and photographers who are members of the Seacoast Artists Guild of South Carolina dedicated to advancing excellence in the visual arts through teaching, exhibits, workshops, art shows & sales. Hours: daily 6am - 2pm. Contact: at (www.seacoastartistsguild.com).

Richburg

Olde English District Visitors Center & Market, 3200 Commerce Drive, Suite A, Richburg. **Ongoing** - This is your one stop shop for finding specialty food products, art (pottery, jewelry, etc.) and many other local, unique items from our region. We also carry a variety of South Carolina souvenirs. Hours: daily, 9am-5pm. Contact: 803/385-6800 or at (www.oldeenglishmarket.com).

Ridge Spring

Art Association of Ridge Spring Gallery, Art Center in Ridge Spring, located behind the Ridge Spring Civic Center, 108 Maintenance Shop Circle, Ridge Spring. **Ongoing** - Featuring works in a variety of media by: Ron Buttler, Sammy Clark, Christie Dunbar, Donna Minor, Joanne Crouch, Gloria Grizzle, Donna Hatcher, Linda Lake, Samantha McClure, Danny O'Driscoll, Gwen Power, Deborah Reeves, Mary Rogers, Emily Short, Marion Webb, and Barbara Yon. Hours: Fri. & Sat., 10am-4pm or by appt. Contact: 803/685-5003, 803/685-5620 or at (<http://sites.google.com/site/artassnridgespring/Home>).

Spartanburg

Downtown Spartanburg, Mar. 16, 5-9pm - "Art Walk Spartanburg". Held on the 3rd Thur., of every month art galleries and art spaces in downtown Spartanburg will open their doors. Participating are: Spartanburg Art Museum, Artists' Guild of Spartanburg Gallery, HUB-BUB showroom, Carolina Gallery, and West Main Artists Cooperative. For more information call 864/585-3335 or visit (www.carolinagalleryart.com).

Chapman Cultural Center, 200 East St. John Street, Spartanburg. **Sundays from 1-5pm** - "Sundays Unplugged". All of the exhibits are

open and most are free, including Spartanburg Art Museum, Artists' Guild of Spartanburg Gallery, Student Galleries, Spartanburg County History Museum, and Spartanburg Science Center. In addition, local artists sell their artwork in the Zimmerli Plaza at the Sunday Art Market. And, as a final added attraction, a local musician provides a free mini-concert 2-4 p.m. Contact: call 864/542-2787.

Curtis R. Harley Art Gallery, Performing Arts Center, USC-Upstate, 800 University Way, Spartanburg. **Through Mar. 24** - "Process," featuring a selection of preliminary designs and layouts by Spartanburg, SC, designer, Matthew Donaldson. A reception will be held on Mar. 2, beginning at 4:30pm. Donaldson earned a BA in Visual Arts from Francis Marion University and an MFA in Graphic Design from the University of Memphis. He has worked as a freelance designer and interactive designer, and currently serves as an Assistant Professor of Graphic Design, and director of The Studio, a student-run, faculty-led design firm, at University of South Carolina Upstate. Hours: Mon.-Fri., 9am-5pm. Contact: Gallery Director, Jane Nodine at 864/503-5838 or e-mail at (jnodine@uscupstate.edu).

Justine V.R. "Nita" Milliken Wing, Milliken Fine Arts Building, Converse College, Spartanburg. **Ongoing** - Featuring a collection of 52 prints, given by Spartanburg resident Frank Toms which includes works by Joan Miro, Salvador Dali, Alexander Calder, Helmut Newton and others. Hours: Mon.-Fri., 9am-5pm. Contact: 864/596-9181 or e-mail at (artdesign@converse.edu).

Spartanburg Art Museum, Chapman Cultural Arts Center, 200 East St. John Street, Spartanburg. **Through Mar. 5** - "In Other Words," is a group exhibition featuring the work of seven artists who are fascinated with letters and language. Viewers are challenged to consider words and text not only as a means of gaining and dispersing information, but as visual representations of human thoughts and emotions. The works on view range from photographs of vintage and out-of-print books, sculptural works made of repurposed do-do lists, and canvases embroidered with braille text. These vastly different materials and techniques all contribute to a celebration of the varied methods of visual communication. Featured artists include: Ellen Cantor, Cristiana de Marchi, Mary Stuart Hall, Sarah Hulsey, Laura Noel, Elizabeth Stone, and Amanda Wagstaff. Admission: Yes. Hours: Tue.-Sat., 10am-5pm; Sun., 1-5pm; and till 9pm on 3rd Thur. of each month. Closed on national holidays. Contact: 864/582-7616 or at (www.spartanburgartmuseum.org).



Work by Peter Barnitz

UPSTATE Gallery on Main, 172 E. Main Street, Spartanburg. **Through Mar. 4** - "Engulfed," featuring a selection of contemplative and reductivist paintings by prominent New Orleans artist, Peter Barnitz. Inspired by both dance and the intricate choreography of sports, Barnitz creates visually complex, deeply meditative abstractions that combine the notion of movement with an appreciation of the schematic. **Mar. 3 - Apr. 29** - "Inspire, USC Upstate 2017 Student Design Competition Exhibition". UPSTATE Gallery on Main and the University of South Carolina Upstate Visual Arts Department, invite you to attend the "2017 USC Upstate Student Design Exhibition", a juried exhibition featuring the works of USC Upstate Graphic Design seniors and recent graduates. Awards will be given for Gold, Silver, Bronze, and Honorable Mentions. Jurors are Bridget Kirkland and Matthew Donaldson, full time Graphic Design professors at USC Upstate. **Ongoing** - The gallery is dedicated to contemporary and original exhibitions that include selections from the permanent collection by artists Andy Warhol, Jerry Uelsmann and Beatrice Riese. Hours: Tue.-Sat., noon-5pm or by appt. Contact: Jane Allen Nodine, director by e-mail at (jnodine@uscupstate.edu), call 864/503-5838, or Mark Flowers, exhibits coordinator by e-mail at (Mflowers@uscupstate.edu), or call 864/503-5848.

West Main Artists Cooperative, 578 West Main St., Spartanburg. **Ongoing** - Featuring a twenty thousand square foot facility offering affordable studio space and featuring works by 50 local artists. Come to see works from local artists, attend workshops, shop in the retail

continued on Page 47