

NC Institutional Galleries

continued from Page 59

funded and sponsored by the Downtown Art District Association, a non-profit organization, and their supporting membership. Contact: 336/734-1864 and visit (www.dadaws.org) for more information.



Work by Chris Flory

Artworks Gallery, 564 N. Trade Street, Winston-Salem. **Through Apr. 1** - "Spanish Dreams," featuring works by Chris Flory, and "Ode to the Fern," featuring works by Beverly Noyes. A reception will be held on Mar. 3, from 7-10pm. Flory's paintings in this exhibition, all acrylic on paper, are abstractions inspired by last year's trip to the south of Spain. Noyes will exhibit watercolors that were inspired by her appreciation of the many varieties of the beautiful and graceful fern. **Ongoing** - The gallery is the longest running cooperative gallery established by artists for artist members, showing 12 exhibits per year in the heart of Winston-Salem's Art District. Approx. 21 artists show their work in mediums such as painting, watercolor, drawing, photography, sculpture, encaustic wax, and digital art. The gallery features the work of Mary Beth Blackwell-Chapman, E.Faye Collins, Chris Flory, Carl Gericke, Don Green, Nancy Hayes, Ted Hill, Alix Hitchcock, Virginia Ingram, Steven Hull Jones, Lea Lackey-Zachmann, Nanu LaRosee, Kate Magruder, Beverly Noyes, Nelida Otero, Dave Riedel, Ben Rouzie, Inez Ruchte, Virginia Shepley, Ed Shewmake, Mitzi Shewmake, Anne Kesler Shields, Kimberly Varnadoe, Jody Walker, Mona Wu, Tyrrie Brown, Mike Foley, and John Hamilton. Hours: Tue.-Sat. 11am-5pm and Sun., 1-4pm. Contact: 336/723-5890 or at (www.artworks-gallery.org).

4th Dimension Gallery, Commerce Plaza, 411 W. Fourth St., downstairs from Cat's Corner, Winston-Salem. **Ongoing** - Featuring works by art students from Winston-Salem's colleges and universities - the NC School of the Arts, Salem College, Wake Forest University and Winston-Salem State University. Hours: Fri., 5-8pm & Sat., 5-8pm. Contact: 336/249-0418.

Piedmont Craftsmen Gallery, 601 North Trade Street, Winston-Salem. **Ongoing** - Featuring fine art crafts by over 350 of the best artisans of the Southeast. Hours: Tue.-Fri., 10:30am-5pm & Sat., 11am-4pm. Contact: 336/725-1516 or at (www.piedmontcraftsmen.org).

Red Dog Gallery, 606 N. Trade Street, Winston-Salem. **Ongoing** - The gallery showcases the work of a consortium of talented local artists and craftsmen from the group Art For Art's Sake. From rich paintings and raku pottery to hand-made jewelry and whimsical sculpture, the items and styles on display at the gallery are constantly changing - and there always is something new to discover for every sensibility and budget. Hours: Tue.-Fri., noon-6pm and Sat., 11am-4pm.

Contact: 336/413-6667 or at (www.theafasgroup.com).

Reynolda House Museum of American Art, Reynolda Road, Winston-Salem. **Mary and Charlie Babcock Wing Gallery, Through June 4** - "Samuel F.B. Morse's 'Gallery of the Louvre' and the Art of Invention". Reynolda House Museum of American Art will welcome an American masterwork for this exhibition, Samuel F.B. Morse's Gallery of the Louvre (1831-33). Created when the artist was living and working in Paris, the painting represents the famed Salon Carré in the Musée du Louvre. Morse spent months walking the halls of the museum, selecting Old Master paintings for his composition, then painstakingly copying the paintings and "installed" them in the virtual gallery. The resulting monumental canvas—six feet by nine feet—was both an example of Morse's erudition and skill and a tool of instruction for American viewers who did not have access to Renaissance and Baroque paintings. **Ongoing** - Collection of 18th through 20th century art, sculpture, American art, and pottery. Admission: Yes. Hours: Tue.-Sat., 9:30am-4:30pm & Sun., 1:30-4:30pm. Contact: 336/725-5325 or at (www.reynoldahouse.org).

Sawtooth School For Visual Arts, Milton Rhodes Center For The Arts, 251 N. Spruce St., Winston-Salem. **Eleanor and Egbert Davis Gallery, Through Mar. 17** - "Amalgamated Transmutations: Sanctuary and Safekeeping". An Artist Conversation & Guided Tour will be offered on Feb. 3, from 5-7pm. Artists Nicole Uzzell, Millicent Greason, and Woodie Anderson present new work examining spaces where comfort, safety, and authenticity can be found. The third in their collaborative series, this exhibit will include three large-scale installation pieces built on-site, inviting visitors to contemplate their own feelings of safety and belonging. **Through Mar. 17** - "Sawtooth Photo League/Darkroom Society". A reception will be held on Feb. 3, from 5-7pm. The exhibit features works by photographers in Sawtooth's Photography programming. Hours: Mon.-Fri., 10am-5pm & Sat., 10am-2pm. Contact: 336/723-7395 or e-mail at (www.sawtooth.org).

SEED Collective Gallery, 205 W. Sixth Street, entrance is on "Soho Alley", Winston-Salem. **Ongoing** - Featuring works by a cooperative group of artists in various mediums. Hours: Sat. from 11am-5pm & by appt. Contact: 336/722-2345.

The Gallery of the Arts, Commerce Plaza, 411 West Fourth Street, just next door to the Stevens Center, Winston-Salem. **Ongoing** - the facility includes The Community Arts Cafe's Gallery of the Arts, Underground Theare Gallery, and Arts Alley featuring works from artists of the Triad region of North Carolina including fine art, fine craft, literature, recorded music, videos and any other products available exclusively through CAC. Hours: Mon.-Sat., noon-6pm & during First Friday Gallery Hop. Contact: 336/793-8000 or at (www.communityartscafe.com).

Unleashed Arts Center, 204 West 6th Street, Winston-Salem. **Ongoing** - The Center is a special initiative by The AFAS Group to foster an appreciation of art and to encourage the development of emerging artists. The center provides a venue for art shows, seminars, artist demonstrations and includes working artists studios. Hours: Tue.-Fri., noon-6pm and Sat., 11am-4pm. Contact: 336/413-6667 or at (www.theafasgroup.com).

Little River Art Works, 6417 Abner Rd., Asheboro. **Ongoing** - Featuring stoneware luminaries and hand carved folk art scenes on our pottery by Nora & Barry Walbourn. Hours: by appt. only. Contact: 336/381-4708 or e-mail at (littleriver@rtmc.net).

Susan Harrell Studio Gallery, 375 S. Fayetteville Street, Asheboro. **Ongoing** - Featuring a fine art gallery showcasing the work of contemporary photorealism painter Susan Harrell and other select artists. Hours: Tue.-Sat., 10am-5pm. Contact: 336/267-8286 or at (www.susanharrell.com).

Asheville

Aesthetic Gallery, 6 College St., across from Pritchard Park, Asheville. **Ongoing** - Offering a variety of international works, including terracotta ceramics from Viet Nam and stone sculpture from Zimbabwe. In addition, there is an assortment of intricately detailed hand-crafted pictorial textiles from Australia and Lesotho, many of which depict local Asheville scenes. Also available are Australian Aboriginal oil paintings, Bruni Sablan oil paintings from the "Jazz Masters Series," and ceramic tiles from the Southwest (US). Hours: Tue-Sat, noon-6pm. Contact: 828/301-0391 or at (www.aestheticgallery.com).

American Folk Art & Antiques, 64 Biltmore Ave., Asheville. **Ongoing** - Featuring antique folk art, functional and contemporary folk pottery, furniture and paintings. Hours: Mon.-Sat., 10am-6pm & Sun., noon-5pm. Contact: 828/281-2134 or at (www.amerfolk.com).

Appalachian Craft Center, 10 North Spruce St., Asheville. **Ongoing** - Folk pottery, face jugs, traditional crafts, and other collectables. Hours: Mon.-Sat., 10am-5pm. Contact: 828/253-8499 or at (www.appalachiancraftcenter.com).

ArtEtude Gallery, 89 Patton Avenue, Asheville. **Ongoing** - Featuring compelling contemporary art, by talented artists, for discerning collectors. Hours: Mon.-Thur., 10am-6pm; Fri.-Sat., 10am-7pm; & Sun. noon-5pm. Contact: 828/252-1466 or at (<http://artetudegallery.sqsp.com/>).

Ariel Gallery, 19 Biltmore Ave., Asheville. **Ongoing** - Presenting the best in clay, fiber, paper, books, jewelry, metal, sculpture, furniture and glass by members of the Ariel Contemporary Craft Cooperative. A gallery owned and operated by artists. Hours: Tue.-Thur., 10am-6pm; Fri. & Sat., 10am-7pm and Sun., 1-5pm. Contact: 828/236-2660 or at (www.arielcraftgallery.com).

Bellagio, 5 Biltmore Plaza, Historic Biltmore Village, Asheville. **Ongoing** - Featuring exquisitely handcrafted jewelry and clothing. Hours: Mon.-Sat., 10am-6pm. Contact: 828/277-8100 or at (www.bellagioarttowear.com).

Bella Vista Art Gallery, 14 Lodge St., Historic Biltmore Village, Asheville. **Ongoing** - Featuring works by regional and national artists in a variety of mediums. Offering contemporary oil paintings, blown glass, pottery, black & white photography, stoneware sculptures, and jewelry. Hours: Mon.-Sat., 10am-6pm & Sun., 10am-4pm. Contact: 828/768-0246 or at (www.BellaVistaArt.com).

Bender Gallery, 12 S. Lexington Ave., Asheville. **Ongoing** - The region's largest and most diverse studio glass gallery on two sun-filled levels features artists from around the country as well as around the world. Hours: Mon.-Sat., 10:30am-5pm & Sun., noon-5pm. Contact: 828/505-8341 or at (www.bendergallery.com).

BlackBird Frame & Art, 365 Merrimon Avenue, just 3/4 mile north of downtown, Asheville. **Ongoing** - Currently, about 25 painters, photographers and crafters show their work at BlackBird. We also offer expert custom framing. Hours: Mon.-Fri., 10am-6pm & Sat., 10am-3pm. Contact: 828/252-6036 or at (www.BlackBirdFrame.com).

Blue Ridge Frame & Gallery, 545 Merrimon Ave., Asheville. **Ongoing** - Featuring works by local artist Linda Cheek, Ann Vasilik, Carol Bomer, Kelly Wilkinson, and many more. Plus a large selection of prints, posters, and quality custom framing. Hours: Mon.-Fri., 9:30am-6pm & Sat., 10am-4pm. Contact: 828/253-3559.

Blue Spiral 1, 38 Biltmore Ave., Asheville. **Gallery Two, Through Mar. 24** - "new times three" (new works, new artists, new year), featuring an annual exhibition that offers fresh perspectives by introducing artists never before exhibited at the gallery. The exhibit includes works by Jessica Dupuis - ceramics, Heather Hilton - abstract sculpture, Alberto Ortega - oil painting, John Douglas Powers - conceptual sculpture, Peter Roux - painting & drawing, Takuro Shibata - ceramics, Hitome Shibata - ceramics, Kirsten Stingle - figurative ceramics, and Jeremy Wallace - ceramics. **Gallery One, Through Mar. 24** -

"New Works," featuring a collection of new works by regularly represented artists. **Small Format Gallery, Through Mar. 24** - "another look," featuring works by Ron Ruble. Contemplative prints, some featuring hand-colored elements, depict obscure juxtapositions of historical characters, vast landscapes, and imagery celebrating aviation. **Showcase Gallery, Through Mar. 24** - "Ian Brownlee". Evocative and playful, Brownlee's works on paper illustrate narratives of adventure, humorous relationships and mysterious rituals. **Ongoing** - Featuring works in a variety of mediums by regional, national and international artists. Hours: Mon.-Sat., 10am-6pm. Contact: 828/251-0202 or at (www.bluespiral1.com).

Castell Photography, 2C Wilson Alley off Eagle St., Asheville. **Ongoing** - The gallery is owned by internationally recognized artist Brie Castell, is a unique photographic Salon & Gallery dedicated solely to photo based media. The gallery features the work of Brie Castell, and also hosts several rotating exhibitions each year of other talented photographers. Hours: Wed.-Fri., noon-6pm, Sat., noon-7pm or by appt. Contact: 828.255.1188 or at (www.castell-photography.com).

Chatsworth Art and Antiques, 54 N. Lexington Ave., Asheville. **Ongoing** - Specializing in 19th and early 20th century oils, watercolors and prints. Also jewelry, silver, china, small furniture and fine accessories. Hours: Tue.-Sat., 11am-5pm. Contact: 828.252.6004.

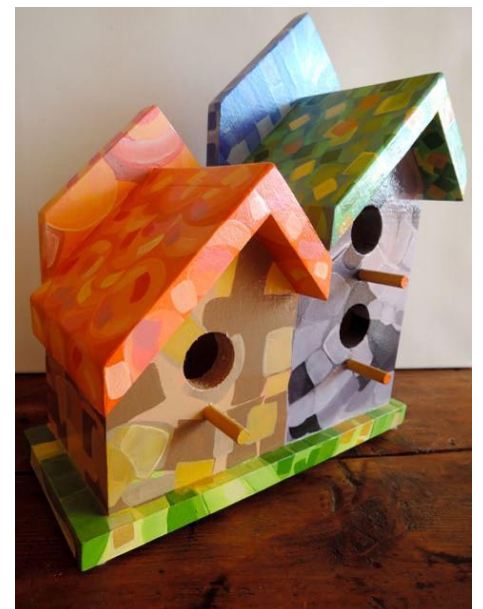
Clayspace Co-op, River Arts District, 119A Roberts St., Asheville. **Ongoing** - The Clayspace Co-op is a cooperative ceramics studio and showroom located in the historic river arts district of Asheville, North Carolina. The main aim of the Clayspace Cooperative is to provide an environment that promotes the artistic growth and success of its members through cooperation and education. Hours: hours by chance. Contact: 828/279-3811.

Cold River Gallery, 32-A Biltmore Ave., Asheville. **Ongoing** - Welcome to the artistic expression of messages found in ancient wisdom, philosophies and our Earth's gifts, presented as the fine art of Karen Pierre. Working studio, jewelry, pottery. Hours: Tue.-Sat., noon-5pm. Contact: 828/350-0955.

Corey C. McNabb Studio, River Arts District, 1 Roberts Street, Suite 201, above White Duck Taco Shop, Asheville. **Ongoing** - An Asheville native, McNabb paints only with a palette knife, applying oils or acrylics to canvas, creating bold bright images with an impressionistic impasto style. Hours: Thur.-Tue., 11am-5pm. Contact: at (www.mcnaabfineart.com).

CURVE studios & garden, 6, 9 & 12 Riverside Dr., River Arts District, Asheville. **Ongoing** - Working studios of Constance Williams, Sutherland Handweaving, Patti Torno, Maria Troya, Kyle Carpenter, Akira Satake, Cynthia Wynn, Fran Welch, Jenny Mastin, Cassie Ryalls & more. Hours: 11am-4pm daily. Contact: 828/388-3526 or at (www.CURVEstudiosNC.com).

Desert Moon Designs Studios & Gallery, 372 Depot Street, Suite 44, River Arts District, Asheville. **Ongoing** - The gallery is a progressive contemporary gallery that includes working studios. The focus of the gallery is to showcase both emerging/established local and visiting regional artists. Several times a year special exhibitions are scheduled to introduce new talent or to bring focus to a certain art medium. Hours: Mon.-Sat., 11am-5pm. Contact: 828/575-2227 or at (<http://www.desertmoondesigns-studios.com>).



Work by Marilou Solares

FW Gallery at Woolworth Walk, 25 Haywood St., Asheville. **Mar. 1 - 30** - "Jennifer Barrineau + Marilou Solares". A reception will be held on Mar. 3, from 4-6pm. Jennifer Barrineau grew up

continued on Page 63

NC Commercial Galleries

Aberdeen

Artistic Impressions, 103 North Poplar Street, Aberdeen. **Ongoing** - Featuring custom stained glass, glass etching, repairs, restoration and church windows, plus a full supply for the hobbyist. Hours: Mon.-Fri., 9am-5pm & Sat., 10am-2pm. Contact: 910/944-1930.

Seagrove Pottery of the Sandhills, 1680 NC Highway 5, less than 2 miles from the Village of Pinehurst in the Food Lion/Bowling Alley Plaza, Aberdeen. **Ongoing** - Featuring only NC potters and primarily those of Seagrove, NC. We typically have over 1000 pieces from 25 pottery artist's on display. Hours: Mon.-Sat., 10am-5pm. Contact: 910/420-8056 or at (www.pinehurstpottery.com).

Asheboro

Circa Gallery, 150 Sunset Avenue, Asheboro. **Ongoing** - Featuring works by local, regional, and established artists. Hours: Tue.-Sat., 11am-6pm. Contact: 336/736-8015.

Colorshow Gallery, 151 N. Fayetteville Street, located on the second floor of Bell & Browne Law Offices, Asheboro. **Ongoing** - The gallery offers an assortment of artworks by NC artists, from pottery and blown glass, to fiber arts, jewelry and paintings. We also have an assortment of hand-poured candles and handmade soap. Hours: Mon.-Thur., 11am-6pm; Fri., 11am-4pm and every 3rd. Fri., is our Open House from 5:30-8:30pm, where you can meet the artists and enjoy some refreshments. Contact: Betsy Browne at 336/465-2387 or at (<http://www.colorshowgallery.com>).