

# Carl Plansky

## Spring Arrival

*Expressive full-frontal assaults, Carl Plansky's paintings of flower bouquets threaten to leap from the canvas and strangle the viewer. To see his paintings is to be immersed in a colorful garden, as well as a pit of writhing snakes.*

Lance Esplund *Wall Street Journal*, April 11, 2009

1 April - 30 April 2011



Ludwig's Flowers 60" x 40" Oil on Linen

### ELDER GALLERY

1427 South Boulevard • Charlotte, NC 28203 • 704-370-6337 • [www.elderart.com](http://www.elderart.com)

## Bechtler Museum of Modern Art in Charlotte, NC, Features Works by Niki de Saint Phalle

Whimsical, colorful artworks by Niki de Saint Phalle will be on view at the Bechtler Museum of Modern Art and at The Green, across the street from the Museum at the Levine Center for the Arts in Uptown Charlotte, NC, through Oct. 3, 2011. The exhibit, *Niki de Saint Phalle: Creation of a New Mythology*, includes elegant and subtle etchings as well as remarkably powerful and disconcerting sculptures.

The exhibition celebrates the artist's extraordinary appetite for myths and legends as interpreted through dynamic and often provocative sculpture, paintings and prints. The Bechtler presents 55 works inside the museum and five large-scale outdoor works across the street, in addition to the *Firebird* sculpture that graces the museum's plaza. The show will provide intellectual inquiry mixed with a sense of provocation, joy and delight.



Work by Niki de Saint Phalle

Niki de Saint Phalle (1930 – 2002) was a self-taught artist who matured in the company of some of the 20th century's most important painters and sculptors. She was encouraged to develop her own style, which matured into a language of bold colors and expansive and active forms – a sense of both joy and mystery in a variety of media. She worked at all scales, with sculptures less than a foot high and others

almost 20 feet tall.

In some instances, many of Saint Phalle's interests combine and the works which first appear to be paintings, upon closer inspection are shifting and rotating, powered by small electric motors hidden within the work. *Niki de Saint Phalle: Creation of a New Mythology* is a kaleidoscopic journey where things don't always appear as they seem.



Work by Niki de Saint Phalle

Particularly because of the joyful quality in so much of her work and its powerful and seductive use of color, Saint Phalle has proven exceptionally intriguing to audiences who are new to the world of modern art and its complexities. Because of her apparent simplicity, the works can be enjoyed appropriately on a number of levels and the more a viewer gets to know her work, the more intriguing content and greater complexity of composition the viewer discovers without losing the initial *continued above on next column to the right*

attraction to its energy and attractiveness.

Saint Phalle's outdoor sculptures are admired by audiences across the globe. Her playful, larger-than-life creations are constructed from fiberglass, colorful stones, glass, mirrors and ceramic tiles. Visitors are encouraged to touch and in some cases explore the works from the inside out as with *Cat* and *La Cabeza*, the brightly colored skull that faces the museum.

Several themes are suggested by the works in this exhibition, especially notions of beauty and the societal roles of women. In addition, Saint Phalle's work depicts gods from various cultures. Snakes

and birds surface throughout her oeuvre as harbingers of danger or temptation - and also as protectors. Life and death are considered in forms general and mystical and sometimes driven by contemporary circumstances.

The Bechtler Museum of Modern Art is grateful for its partnership with the Niki Charitable Art Foundation in this exhibition. The exhibition is made possible with a generous grant from Wells Fargo Private Bank.

For further information check our NC Institutional Gallery listings, call the Museum at 704/353-9200 or at ([www.bechtler.org](http://www.bechtler.org)).

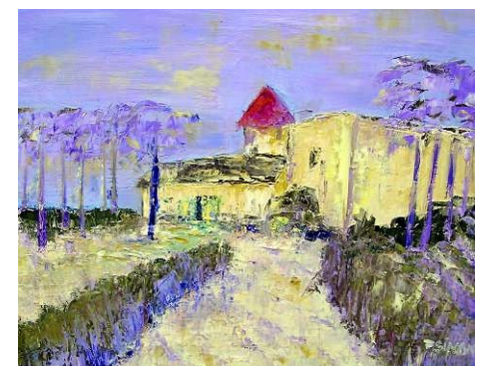
## Providence Gallery in Charlotte, NC, Offers Works by Paul Simon

Providence Gallery located in historic Myers Park, in Charlotte, NC, will present the exhibition, *Anthology: 2001 – 2011*, featuring a series of impressionistic paintings by well known Charlotte clothier and artist Paul Simon. This show celebrates the tenth anniversary of Simon's painting career and will be on view from April 1-30, 2011. The exhibition will kick off with an opening reception with the artist on Friday, Apr. 1 from 6-9pm.

Simon describes himself as a colorist, explaining that just as his business involves constantly working with assorted fabrics to find the right combinations for clothing, in his role as artist he is also continually playing with color. He is always searching for the correct synthesis that will allow him to create a rendition of his chosen subject that will accurately convey the image as seen through his eyes.

A frequent traveler, Simon collects source material for his paintings from his photographs. The *Anthology* exhibit will include landscapes from Provence, Sicily and Tuscany, as well as regional locales including the North Carolina Mountains and the South Carolina Lowcountry. Figurative and floral still life works are also featured in this inclusive show.

Simon has long been a patron of the arts in Charlotte; for example, for three consecutive years Charlotte's annual Art with Heart live auction to benefit United Family Services' domestic violence programs has opened with one of Simon's signature "Rooster" paintings; he titles each of these pieces, *Coq au Vin* and creates them exclusively for that auction.



Work by Paul Simon

Due to Simon's vibrant palette, unique interpretations and distinctive impressionistic style his paintings are highly sought after. This will be Simon's third solo show with Providence Gallery and each one

*continued on Page 17*

Carolina Arts, April 2011 - Page 15