

# Turchin Center for the Visual Arts in Boone, NC, Features Works by J. Alex Poorman, Tom & Kitty Stoner, Laura Berman, and April Flanders

The Turchin Center for the Visual Arts at Appalachian State University in Boone, NC, will present several new exhibits including: *Places for Contemplation in Public Buildings: Constructing a Model Space for Reflection*, on view in Gallery A from Apr. 1 through June 11, 2011; *Open Spaces, Sacred Places: Tom Stoner & the TKF Foundation*, on view in Gallery B, from Apr. 1 through June 11, 2011; *Chromata: Laura Berman*, on view in the Mayer Gallery, from Apr. 1 through Aug. 20, 2011; and *Beyond Their Natural Range: April Flanders*, on view in the Catwalk Community Gallery, from Apr. 1 through June 4, 2011.



Work by April Flanders

A research project by J. Alex Poorman, *Places for Contemplation in Public Buildings: Constructing a Model Space for Reflection*, is offered in conjunction with the exhibit, *Tom Stoner & TKF Foundation Exhibition*.

As employers consider the critical need of the 21st century workplace to attract and retain the best and brightest employees, our society must also consider a shift in the functional spaces geared toward an environment that supports an overall "work/life" lifestyle. This project looks at how diverse spaces, required by a new generation of employees, are transforming the workplace and explores specific design aspects for incorporating sacred spaces into workplace environments.

Poorman, IIDA, Assoc. AIA is an assistant professor of Interior Design at Appalachian, where his course responsibilities include Interior Building Materials and Systems, Drafting and CAD, and Interior Design Studios. He holds a Master of Architecture degree from North Carolina State University and a Bachelor of Interior Architecture degree from Kansas State University. Poorman is also a partner in Triangle Commercial Architecture, PLLC in Raleigh.

*Open Spaces, Sacred Places: Tom Stoner & the TKF Foundation* is being exhibited in conjunction with *Places for Contemplation in Public Buildings: Constructing a Model Space for Reflection*.

*Open Spaces, Sacred Places* is a book written by Tom and Kitty Stoner that introduces nature as a means to heal communities in need. A series of inspirational stories told of passionate and persistent

people who have brought communities together to create public areas of respite, it dramatically demonstrates how nature has the power to heal and unify in our increasingly frenetic, 21st century world.

Tom and Kitty Stoner are the founders of the TKF Foundation which supports the creation of public green spaces that offer an antidote for the stressful, divisive, and isolating effects of life in today's complex world.

Printmaker Laura Berman allows her work to be guided by structures based on sequence, multiple and interactive images. Her work is often non-traditionally displayed and orchestrated. Design and collaboration are paradigms in Berman's work; she often allows her pieces to collaborate by design with their surroundings, becoming an installation made for a specific place and audience. Through its inherent reliance on language and communication, design inspires her work.

Berman is an image-maker who works with hand-printed multiples in non-traditional formats. She has created site-specific works and exhibited at numerous galleries and museums throughout the world. She received her BFA from the New York State College of Ceramics at Alfred University and her MFA from Tulane University. She is currently an assistant professor of printmaking at the Kansas City Art Institute.

Printmaker April Flanders' current work addresses the uncontrollable nature of invasive botanical species in the Appalachian region, influenced by humankind's fascination with the exotic, and perhaps driven by the need for individuality. *Beyond Their Natural Range* reveals the result of this obsession as an unnatural, globalized landscape that means an inexorable death for native species.

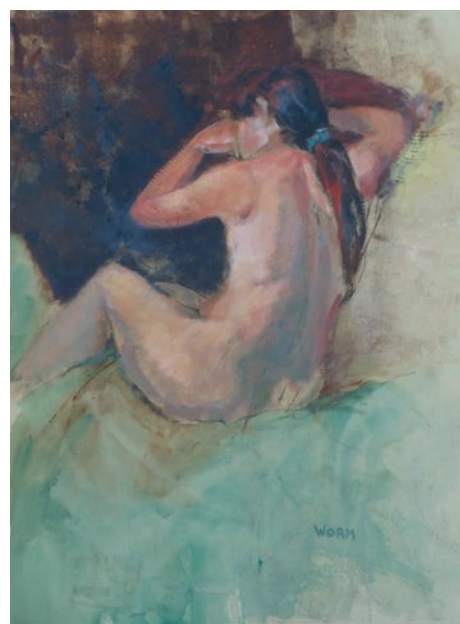
Flanders holds an MFA in printmaking from Arizona State University. She has had solo exhibitions at galleries in Arizona, Florida, Tennessee, Missouri and Delaware. Her work has been featured in group shows at museums and galleries nationally and internationally. Her work is in several public collections, including the Scottsdale Museum of Contemporary Art and the Tucson Museum of Art. She is on faculty at Appalachian's Department of Art.

The Turchin Center also is presenting the exhibits, *Appalachian Alumni in the Arts*, on view in the Main Gallery, through June 4, 2011. ASU has built a national reputation for outstanding academics in all areas of study. Our alumni are successful in areas from business to education, politics to healthcare and communication to art. This exhibition is the first large-scale, group, alumni exhibition featured at the Turchin Center. The *8th Appalachian Mountain Photography Competition*, is on view in the Mezzanine Gallery, through June 4, 2011. The Competition (AMPC) is a program of Appalachian's Outdoor Programs in partnership with the Blue Ridge Parkway Foundation and the Turchin Center for the Visual Arts.

For further information check our NC Institutional Gallery listings, call the Center at 828/262-3017 or visit ([www.turchincenter.org](http://www.turchincenter.org)).

painting, representing a wide range of techniques, bringing some of the biggest and most talented artists together into one show. In conjunction with the NWS Show, two local members of NWS, Judy Rider and Kate Worm, will exhibit several of their works as well.

*continued above on next column to the right*



Work by Kate Worm

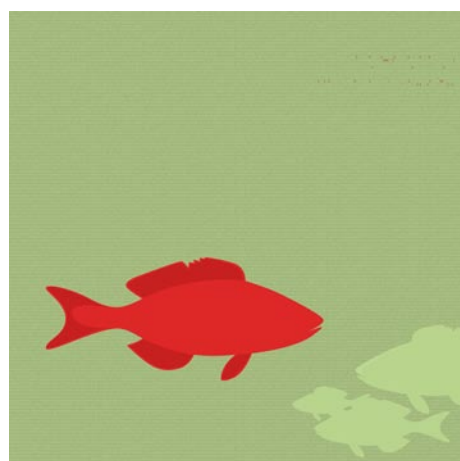
Although the National Watercolor Society is an exhibiting society, it is also an educating society. Its traveling exhibit visits only 5 venues each year. The paintings included are selected by the juror of awards from the previous annual exhibit. The 2010 juror of awards was Christopher Schink. He is quoted as saying: "I always feel honored to be asked to judge the work of my fellow-artists and I feel especially honored to be invited to be the judge of awards for this year's *National Watercolor Society Annual Exhibition*."

"I also feel a responsibility, not to choose the best paintings in the show (because art is subjective, that would be impossible), but to identify and award the paintings I find most exciting," adds Schink. "I search for the paintings that I feel most reveal to me the artists' imagination, passion, sincerity, and involvement. For me, technique is a secondary concern; the artist's skill must only be sufficient to carry the intended ideas feelings of his painting. I'm more concerned with passion than with performance. What made my job difficult was that there were so many paintings that interested and excited me. I congratulate the award winners for their fine work."

Out of the 100 paintings accepted into the annual exhibition, only 30 paintings are selected to travel. This is quite an honor and artists consider selection into the Traveling Exhibit to be akin to an award.

## Folk Art Center in Asheville, NC, Features North Georgia College & State University

The Folk Art Center of the Southern Highland Craft Guild on the Blue Ridge Parkway in Asheville, NC, is presenting the exhibit, *Changes & Continuity: Past, Present, Future*, highlighting the relation between North Georgia College & State University and the Southern Highland Craft Guild. The exhibition will be on view in the Center's Main Gallery through May 15, 2011.



Work by Eliot Bern

Visual Art instruction began at North Georgia College, Dahlonega, GA, in 1965 when Bob Owens was hired to teach art appreciation and art education for teacher education majors. Owens held an MFA

Of course, many of the included paintings are actual award winners. The Traveling Exhibit represents the best of the best from the *National Watercolor Society Annual Exhibition*. Our hosting venues can be assured that we are offering to them some of the most impressive watercolors in the world. The National Watercolor Society Travel Exhibit visits collegiate and public galleries and museums throughout the United States and Canada.

Watercolor workshops and other special events will be held during the course of the exhibit. Contact the Council for further details.

The Caldwell Arts Council's mission is to establish and maintain an awareness and appreciation of cultural arts in Caldwell County, to encourage participation in arts events, and to offer various educational opportunities and administrative services in support of artists, arts agencies, and audiences.

Caldwell Arts Council programs are supported by the NC Arts Council, a division of the Department of Cultural



Work by Al Beyer

Resources. The North Carolina Arts Council works to make North Carolina The Creative State where a robust arts industry produces a creative economy, vibrant communities, children prepared for the 21st century and lives filled with discovery and learning. The Arts Council accomplishes this in partnership with artists and arts organizations, other organizations that use the arts to make their communities stronger and North Carolinians - young and old - who enjoy and participate in the arts. The Arts Council is a division of the Department of Cultural Resources.

For further information check our NC Institutional Gallery listings, call the Council at 828/754-2486 or visit ([www.caldwellarts.com](http://www.caldwellarts.com)).

from the University of Georgia in ceramics but he was also proficient in drawing and painting. He soon introduced courses in each of those areas and interest in the classes quickly grew. By 1971, Owens had persuaded the college administration to approve a department of fine arts that included both visual art and music. Owens became the first head of the Fine Arts Department.

Owens guided the department's growth until his retirement in 1997. In the beginning, facilities for both art and music were makeshift - wherever space was available across campus. For instance, during several early years art classes were held in what was formerly a maintenance garage while music was taught in a building that was once a student dorm. Over the course of Owens' tenure, new facilities for the department were constructed, degree program offerings expanded, new faculty members hired, and student enrollment increased.

Between 2000 and 2011 the department has gone through significant changes: because of increases in student numbers in both programs, visual art and music were given individual department status; new facilities designed for art studios and art classrooms were made available to visual arts; additional faculty were hired;

*continued on Page 41*

## Caldwell Arts Council in Lenoir, NC, Offers National Watercolor Society Exhibit

The Caldwell Arts Council in Lenoir, NC, is pleased to be one of only five host locations for the *National Watercolor Society (NWS) 90th Annual Exhibition's Traveling Show*, which will be on view from Apr. 1 through May 25, 2011.

The National Watercolor Society brings the public the best of water media Page 40 - Carolina Arts, April 2011