

# Wilmington Art Association

continued from Page 31

The *Annual Juried Spring Art Show and Sale* attracts over 300 artists from across the Southeast each year, with over 100 artists selected by judges to show their work. The *Art Show* will take place from Friday, Apr. 12 through Sunday, Apr. 14.

WAA is pleased to announce the names of the two judges for this year's *Show*. Both individuals are well known in their fields - one in painting, and the other in photography.

Todd Carignan, judge for two-dimensional fine art, was born and raised in Wilmington. He attended Savannah College of Art and Design, where he received his BFA in Sequential Art with a minor in Art History. He has worked as a cartoonist, illustrator, concept designer, portraitist, printmaker, and fine artist. He experiments in many media and subjects, but his true passion is oils. Carignan teaches art at the Louise Wells Cameron Art Museum's School and at DREAMS of Wilmington. He hosted a life-drawing group for over a decade, has been a member of the Oil Painters of America, and participates in a Wilmington artists' critique group. Carignan is a core member of an exquisite

corpse artist group called, The Cape Fear Corpers. He has shown at New Elements, Artfuel Inc., Little River Gallery, Thrive Gallery, and Caprice Bistro.

Joshua Curry, the judge for photography, is a passionate, experienced photographer with a sophisticated portfolio of images that illustrate his artistic eye for composition, color, lighting and mood. Inspired by his experience of growing up on the North Carolina coast, Curry knew at an early age that he would follow an artistic path, immersing himself in the context of his environs. He has captured the spirit of celebrities such as President Barack Obama, Secretary of State Hillary Clinton, the late Frank Capra Jr., and the Honorable Mayor of Wilmington, Bill Saffo. He has established iconic CD covers for emerging musicians, and illustrated the work of artists, craftsmen and chefs, defining the essence of still life subjects - from architectural interiors and travel destinations, to sport cars and food.

For further information check our NC Institutional Gallery listing, e-mail to ([springshow@wilmingtonart.org](mailto:springshow@wilmingtonart.org)) or visit ([www.wilmingtonart.org](http://www.wilmingtonart.org)).

## Cameron Art Museum in Wilmington, NC, Offers Works from the Museum's Collection

Cameron Art Museum in Wilmington, NC, is presenting *Here & Now: A Decade of Contemporary Acquisitions*, on view through July 21, 2013.

"It all began with a commitment in 1962 by the St. John's Art Gallery (later the Cameron Art Museum) to build a permanent collection," said Anne Brennan, executive director of Cameron Art Museum. "That's where it started." From that commitment the museum began growing its collection through acquisitions and gifts of art collections. The new exhibition focuses on an exploration of contemporary acquisitions to the permanent collection since the establishment of the Cameron Art Museum in 2002. Some of the most famous artists in the exhibition are Romare Bearden, Sam Francis, Donald Sultan, Mark Flood, Viola Frey, Leonard Baskin, Hiroshi Sueyoshi, Jim Dine and the newest acquisition by Shahzia Sikander.

The work itself is contemporary artwork, produced since 1945. The exhibition brings to light new acquisitions, some which have never been exhibited before. Putting the exhibition together demands a critical eye for how each piece of artwork works with one another (an installation element) and how they fit with the overall design of the exhibition. Holly Tripman,

registrar at the Cameron Art Museum said, "Generally, the works need to speak with or complement each other in some way. Again there are so many ways that can happen - subject matter, medium, or their place in art history. Artwork placed beside each other that you might not expect can generate so many questions."

The exhibition experience opens with the work of current contemporary artists who are working today. "Some of these artists work full-time as artists while others such as Darryl Lauster and Mary Ann Papek-Miller are also teachers and Brad Thomas is the curator of contemporary art at the Mint Museum in Charlotte, NC." Tripman says.

So as this exhibition continues so does the question of "What is contemporary art?" Traditionally museums consider work done after 1945 or post World War II as the beginning of contemporary art as there was a decisive shift from art and architecture referred to as Modernism. Tripman goes on to say, "But some scholars argue that it was not until the late 50s to early 60s that contemporary art came into its own."

For further information check our NC Institutional Gallery listings, call the Museum at 910/395-5999 or visit ([www.cameronartmuseum.com](http://www.cameronartmuseum.com)).

## West Main Artists Co-op in Spartanburg, SC, Features Works by Sydney A. McMath

The West Main Artists Co-op in Spartanburg, SC, will present *Changeling: The Limits of Human Interaction*, featuring recent paintings by Sydney A. McMath, on view Apr. 18 through May 13, 2013. A reception will be held on Apr. 18, from 6-9pm.

McMath will be displaying a collection of new paintings which will explore the emotional and sociological components of human interaction. The pieces investigate the extent to which other people affect on the individual and create and recreate one's self-identity. She is an active member of the West Main Artists Co-op and works mainly large-scale and abstract, often with vibrant color and textures.

McMath grew up in the Washington DC, suburbs of Southern Maryland and is a graduate of Converse College ('04, BFA) and is a full time musician and artist. *Continued on Page 32 - Carolina Arts, April 2013*

ist. Despite frequent public performances musically, this will be her first public art show since attending Converse. McMath will also have her handmade sterling silver, gemstone, and crystal jewelry for sale. All profits from the sale of jewelry go directly to animal rescue and rehabilitation.

McMath has been exposed to art throughout her entire life, frequently attending museums and galleries and participating in arts and music programs from the age of three. Always the inquisitive sort, she has been interested in human interaction her entire life. She has studied psychology and sociology extensively and, from an art history perspective, has frequently attempted to relate historical events with the art of the time. The complexity of human interaction, positive and

*continued on Page 33*



MARCH 5 - MAY 4, 2013

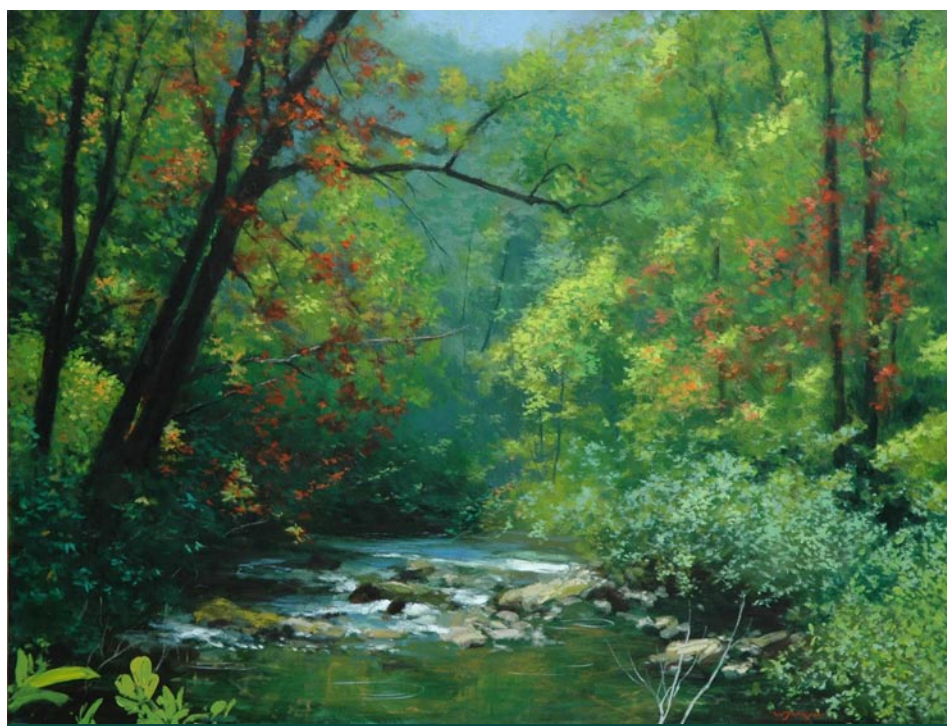
**Carl Plansky:**  
*Thirty Years of Painting*

March 10, 1-3 pm  
Reception for **Carl Plansky: Thirty Years of Painting**  
Gallery Talk at 2 p.m.



200 East St. John St • Spartanburg, SC • (864) 582-7616  
[www.spartanburgartmuseum.org](http://www.spartanburgartmuseum.org)

SAM is funded in part by The Arts Partnership and its donors, the County and City of Spartanburg, the South Carolina Arts Commission which receives support from the National Endowment for the Arts, The George Ernest Burwell, Jr. Fund, The Lucile F. Kohler Fund for the Spartanburg Art Museum, and the Annual Art & Antique Show.



*Late Summer on the Chattooga River*

38 x 50 inches

### WILLIAM JAMESON WORKSHOPS 2013

"Spring on the Blue Ridge," Saluda, NC

May 16 - 18

"Abaco Islands," Bahama

June 17 - 21

"Tuscany, Italy"

September 17 - 24

"Fall on the Blue Ridge," Saluda, NC

October 21 - 25

Each William Jameson Painting Workshop is designed to be an educational and entertaining experience. Along with exhilarating travel, students from beginner to advanced will receive one-on-one instruction in oil, watercolor or acrylic and pen and ink sketching. Whether the travel is down the mountain or to the Bahamas or Italy, you will be with like-minded folks who share your love of art. There will be six hours of instruction each painting day at sites I have carefully selected for their architectural interest or appealing landscapes. Each day will include demonstrations, critiques and help with photography for use in painting your own work of art. All workshops include a "welcome" party and some workshops include private museum tours or excursions to special venues that we have cultivated over the years. Non-painter companions are always welcome! Our workshop trips take us to breathtaking places where there is something of interest for everyone. Of course, special pricing is available for these companions. Please see specific workshop information for additional descriptive information.

Detailed info is available at [www.williamjameson.com](http://www.williamjameson.com)  
or call 828.749.3101.