

# Greenhill in Greensboro, NC

continued from Page 18

ent the third in this series, *Two Artists / One Space: John Beerman and Noé Katz*, curated by Edie Carpenter. The exhibit will continue through June 22, 2014.

North Carolina artists Beerman and Katz are known both nationally and internationally. In this exhibition, a mix of the artists' new works and recently shown works will be presented to North Carolina audiences for the first time. Together, Beerman and Katz bring two divergent approaches to art-making. As such, Beerman's poetic sensibility and luminous approach to landscape contrasts Katz's surrealist figurative works.

John Beerman was born in North Carolina in 1958, lived and worked in Nyack, NY, for over 30 years, and moved back to Hillsborough, NC, in 2008. Beerman received his BFA from the Rhode Island School of Design and also studied at Skowhegan School of Painting and Sculpture. His works are in many collections, such as the North Carolina Museum of Art, the Brooklyn Museum, and the Metropolitan Museum of Art. Beerman is best known for his depictions of the Hudson River Valley as well as his paintings of North Carolina's landscape.



Work by John Beerman

For *Two Artists / One Space*, Beerman is creating a new body of work which will represent a fresh start for him. He looks at the Greenhill exhibition as "a moment to take stock and plot a new course in my explorations as a painter. I am excited about this, and I am looking forward to creating a new body of work for this show at Greenhill. The changes will be in the direction of creating a design on the canvas. [I incorporate] what the culture of twentieth century art has brought to the table of painting, (especially the element of flatness and design of forms and shapes on the canvas) and [interweave these ideas] with my observational investigations of the world that surrounds us. [I take] the elements of nature and man-made creations and [reassemble] them in a fresh and dynamic way on the canvas."

Greenhill will present new subjects taken from views from the artist's Hillsborough studio, mountain landscapes, and scenes composed from the artist's imagination.

## Greenhill in Greensboro, NC, Offers Works by Romare Bearden

Greenhill in Greensboro, NC, will present *Select Collection / Prints of Romare Bearden*, featuring over 40 of Bearden's works with 87 works available for sale, on view from Apr. 14 through June 22, 2014.

Bearden was a seminal African American artist and is recognized as one of America's most important twentieth-century artists. He was a prolific artist, with a catalogue of works in the hundreds. The exhibition and art sale at Greenhill will provide the viewer with some of his most important lithographs, serigraphs and etchings, including his highly acclaimed works *The Family*, *Out Chorus*, *Mecklenburg Autumn* and *The Train*.

Romare Howard Bearden was born on Sept. 2, 1911, in Charlotte, NC, and died in New York City on Mar. 12, 1988, at the age of 76. His life and art are marked by exceptional talent, encompassing a broad range of intellectual and scholarly interests, including music, performing arts, history, literature and world art.

Bearden began college at Lincoln University, transferred to Boston University and completed his studies at New York University, graduating with a degree



Work by Noé Katz

A selection of Beerman's small plein air studies will also be on view.

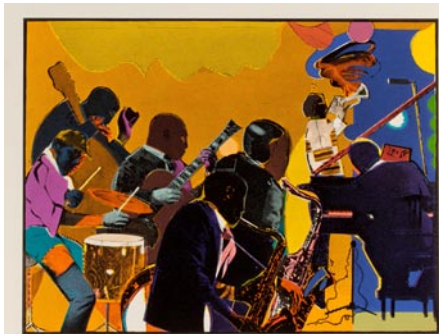
On Apr. 24, from 6:30 – 7:30pm, John Beerman will discuss his recent landscape paintings. The program is free and open to the public. Light refreshments and a reception will follow Beerman's talk.

A recent resident of Greensboro, Noé Katz was born in 1953 in Mexico City, Mexico. He studied at the School of Design and Handicrafts of the Instituto Nacional de Bellas Artes, Mexico City with additional study at the Academy of Fine Arts in Florence, Italy. Katz, whose work has been compared to the masters of Mexican Modernism, is a multi-disciplinary artist who works in both two and three dimensional art forms. His experience traverses a variety of media such as drawing, painting, sculpture, and mural painting.

An animated video of his work was introduced at the Festival Internacional Cine Judio in Mexico City this year. The artist has produced several major architectural commissions such as the aluminum wall reliefs for the Fiesta Americana Grand Chapultepec building in Mexico City, and the monumental "Kissing Doors" for the Tokoro Museum of Modern Art in Omishima, Japan. Katz's works are in international collections including the Museo de Arte Moderno in Mexico City, and the Museum of Latin American Art in Long Beach, CA. The exquisite craftsmanship, sinuous lines, and gliding surfaces of Katz's works which combine the figure with objects and landscape communicate sensibilities of openness. His exhibition will include a selection of Katz's paintings and sculptures and prints.

On May 1 from 6:30 – 8:30pm, Greenhill in association with Casa Azul will host a book signing and an informal talk by Noé Katz. The program is free and open to the public. Light refreshments and a reception with music will follow.

For further information check our NC Institutional Gallery listings, call the gallery at 336/333-7460 or visit ([www.greenhillnc.org](http://www.greenhillnc.org)).

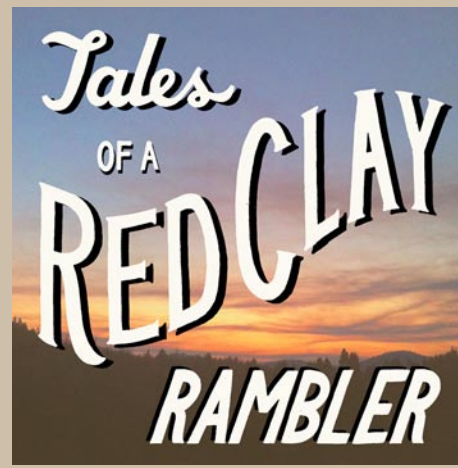


*Out Chorus*, 1979-1980, by Romare Bearden. Art © Bearden Foundation/Licensed by VAGA, New York, NY

in education. He also attended the Art Students League in New York and later, the Sorbonne in Paris.

From the mid-1930s through 1960s, Bearden was a social worker with the New York City Department of Social Services, working on his art at night and on weekends. His success as an artist was recognized with his first solo exhibition in Harlem in 1940 and his first solo show in Washington, DC, in 1944. Bearden's works were exhibited during his lifetime throughout the United States and Europe.

continued above on next column to the right



The Tales of a Red Clay Rambler Podcast features interviews with artists and culture makers from around the world. Hosted by ceramic artist Ben Carter, the show explores how the ideas and aesthetics of the interviewed artists reflect the greater cultures that surround them.

Carter was the educational director of the Pottery Workshop Shanghai from 2010 - 2012 and has been an artist-in-residence at Anderson Ranch Arts Center in Snowmass, CO, The Archie Bray Foundation in Helena, MT, and the Guldagergaard International Ceramic Research Center in Skælskor, Denmark. He has exhibited internationally and taught workshops at art institutions in the United States, China, Australia, and New Zealand. He was also a resident at the Odyssey Center in Asheville, NC, for a few years - which brings him back the NC from time to time. For a complete biography and resume please visit the about page at [www.carterpottery.com](http://www.carterpottery.com).

For Podcast on NC Potters, select episodes 49, 50, 51, 52, 54, 56, and 57 at this link (<https://itunes.apple.com/us/podcast/tales-red-clay-rambler-podcast/id523651655>).

If you like what you hear you might want to sign up for the newsletter. To join the list click the following link and sign up in the box below the streaming player: (<http://www.carterpottery.blogspot.com/2009/05/welcome-to-tales-of-red-clay-rambler.html>).



Work by Ben Carter

His collages, watercolors, oils, photomontages and prints are imbued with visual metaphors from his past in Mecklenburg County, NC, Pittsburgh and Harlem and from a variety of historical, literary and musical sources.

Recognized as one of the most creative and original visual artists of the twentieth century, Bearden had a prolific and distinguished career. He experimented with many different mediums and artistic styles, but is best known for his richly textured collages. Bearden's work is included in many important public collections including the Metropolitan Museum of Art, the Whitney Museum of American Art, the Philadelphia Museum of Art, the Museum of Fine Arts, Boston, The Mint Museum, Charlotte, The Cameron Museum, Wilmington, NC, and The Studio Museum in Harlem, among others. He has had retrospectives at the Mint Museum of Art (1980), the Detroit Institute of the Arts (1986), as well as numerous posthumous retrospectives, including The Studio Museum in Harlem (1991) and the National Gallery of Art, Washington, DC (2003).

Bearden was the recipient of many awards and honors throughout his lifetime. Honorary doctorates were given by Pratt Institute, Carnegie Mellon University, Davidson College and Atlanta University, to name but a few. He received the Mayor's Award of Honor for Art and Culture in New York City in 1984 and the National Medal of Arts, presented by President Ronald Reagan, in 1987.

Greenhill promotes the visual arts of North Carolina by engaging a broad



*Sword Fighter*, 1948, by Romare Bearden. Art © Bearden Foundation/Licensed by VAGA, New York, NY

community of artists, adults and children through dynamic exhibitions and educational programs while providing a platform for exploration and investment in art. Since its founding in 1974, the organization has presented and sold artwork of over 9,800 visual artists and engaged nearly one million visitors through free access to The Gallery, The Shop & ArtQuest, the award-winning education program for children & families.

For further information check our NC Institutional Gallery listings or visit ([www.greenhillnc.org](http://www.greenhillnc.org)).

## Tyler White O'Brien Gallery in Greensboro, NC, Offers Works by Ann Watcher and Amy Sullivan

Tyler White O'Brien Gallery in Greensboro, NC, is presenting *Exploration of Individuality*, featuring works by Ann Watcher and Amy Sullivan, on view through Apr. 20, 2014. Each artist has a bold statement that

sets them apart from everyone else in the art world!

Ann Watcher offers the following artist's statement, "I have loved nature and art as

continued on Page 20

Carolina Arts, April 2014 - Page 19