

Be sure to check out our many Spring Classes. We have a great selection of adult, kid and big kid art classes!!
Be sure to check our website for the upcoming June dates for this year's Smart Kamp!

Blue Ridge Arts Center Calendar of Events



Continuing May 1, 2011: "POP" Open Studio Tour
The Blue Ridge Arts Council is once again pleased to present the POP Open Studio Tour. Visitors will be able to interact with the artists as they demonstrate their skills and educate the visitors about the process of creating art. The event also allows you to purchase incredible artwork directly from the artist with no commission markups. May 1, 12 - 5 pm.

Through - May 6, 2011: "POP" Pickens, Oconee & Pendleton Open Studio Tour Exhibit at Duke's World of Energy



Through - May 13, 2011:
POSTCARD ART EXHIBIT

All artists are invited to donate a piece of postcard art for the benefit of the Blue Ridge Arts Center Fund Raiser. Each postcard will be available for purchase during the show. Select postcards will be offered in a silent auction the night of the opening. It will be a great chance for artists, friends and patrons to acquire a significant piece or pieces of artwork at extremely reasonable prices. This is a great opportunity to make a contribution to the Blue Ridge Arts Center.



May 20 - June 24, 2011: "METAL MANIA" Metal/Sculpture Exhibit

Opening reception will be held on Friday, May 20, 5:30 - 8:30 p.m., in conjunction with the Seneca Downtown Go 'Round.

May 27 & 28, 2011 Memorial Weekend: SENECA FEST WITH "ARTS ON MAIN"

Partnering with the City of Seneca, the Blue Ridge Arts Center will be producing the first annual "Arts on Main" portion of the two-day Seneca Fest Event. Seneca Fest has become an essential cultural ingredient of Historic Downtown Seneca and its' surrounding areas.

This Event is a wonderful opportunity for visitors to view the vast richness of our local artists and crafters talent in art work of all mediums.

www.blueridgeartscenter.com

All exhibits are funded in part by:

The Daily Journal • Max & Victoria Dreyfus Foundation • Oconee County Parks, Recreation & Tourism • Oconee County ATAX • Oconee County Arts & Historical Commission
Seneca Hospitality & Accommodations Tax • South Carolina Arts Commission - which receives support from the National Endowment for the Arts

Classes for adults and kids year round! Visit our web site for art information and links to many upstate art organizations.

111 East South Second Street • Seneca, SC 29678 • (864) 882-2722 • www.blueridgeartscenter.com • office@blueridgeartscenter.com



RIVERWORKS Gallery in Greenville, SC, Features Works by Jim Horner



Work by Jim Horner

RIVERWORKS Gallery in Greenville, SC, will present the exhibit, *Relics*, featuring works by Jim Horner, on view from May 7 through June 19, 2011. A reception will be held on May 6, from 6-9pm.

Relics is a photographic installation of images of relics created and collected by Horner. The images are printed with a photographic process, cyanotype, which is itself a relic. As the abandoned and useless

buildings and vehicles captured by the cyanotypes are deteriorating, their deep blue images are also fading away. Though the images' mysterious blue will disappear, their individual stories will continue in the memories of those who experienced them and then passed that experience on. The cyanotypes blue gives the images an other worldly quality like looking through Alice's glass or into a mythological pool.

Horner teaches photography at Greenville Technical College. He specializes in alternative photographic processes.

RIVERWORKS Gallery is operated by and for the faculty and students from the Department of Visual and Performing Arts at Greenville Technical College. The gallery is located at 300 River Street, Suite 202, along the scenic Reedy River at Art Crossing in downtown Greenville.

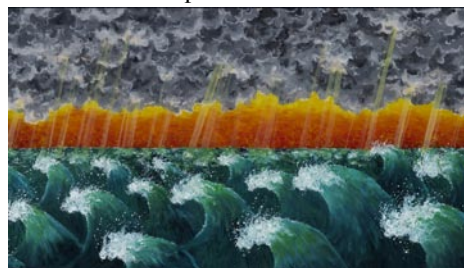
For further information check our SC Institutional Gallery listings, call Fleming Markel, Gallery Manager at 864/271-0679 or e-mail to (fleming.markel@gvltec.edu).

Woolworth Walk in Asheville, NC, Offers Works by Rob O'Sheeran

Woolworth Walk in Asheville, NC, will present an exhibit of works by Rob O'Sheeran, on view in the FW Front Gallery, from May 1 - 30, 2011. A reception will be held on May 6, from 5-7pm.

Bold, vibrant colors and recurring designs are the foundations of O'Sheeran's paintings, which are often created on found objects and architectural salvage. Vintage glass windows are principally used as canvas, which illuminate the richness of chosen hues, the depth of textures, and the motion of passing brush strokes. The breadth of his subject matter ranges from the abstract and imaginary to landscapes and the simplicity of everyday objects. O'Sheeran's art comes in all sizes and shapes from corporate size

paintings to small personal ones for the home and work space.

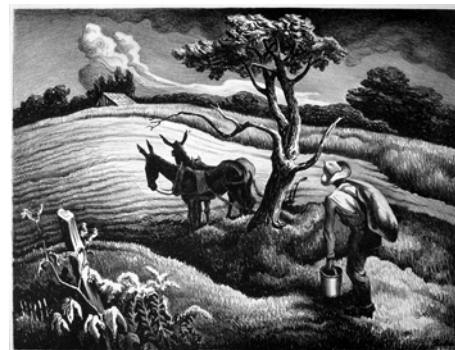


Work by Rob O'Sheeran

For further information check our NC Commercial Gallery listings, call Megan Stone at 828/254-9234 or e-mail to (info@woolworthwalk.com).

Asheville Art Museum in Asheville, NC, Features WPA Printmakers

Asheville Art Museum in Asheville, NC, is presenting the exhibit, *Artists at Work: American Printmakers and the WPA*, on view in Gallery 6, through Sept. 25, 2011.



Work by Thomas Hart Benton

This exhibition showcases prints created under the Federal Art Project, a unit of the Works Progress Administration (WPA). Created in 1935 to provide economic relief to Americans during the Great Depression, the WPA offered work to the unemployed on an unprecedented scale by spending money on a wide array of programs,

including highways and building construction, reforestation and rural rehabilitation. Like railroad workers, miners, farmers and anyone out of work, artists were recognized as a special group of laborers in need of financial assistance.

The era represents a very specific moment when art for the people was a truly rallying concept that resulted in wonderful woodcuts, wood engravings, linoleum cuts, etchings, lithographs and the then new "silkscreen" process. The prints in this exhibition speak to the essence of the times and document a significant phase in the printmaking history of the United States.

This exhibition was organized and curated by the Asheville Art Museum. This exhibition is sponsored by Phillip Broughton and David Smith and received additional support from Ray Griffin and Thom Robinson.

For further information check our NC Institutional Gallery listings, call the Museum at 828/253-3227 or visit (www.ashevilleart.org).

Crimson Laurel Gallery in Bakersville, NC, Features Works by Stacey Lane, Michael Kline, and Many Others

Crimson Laurel Gallery in Bakersville, NC, will present several exhibits including, *Rubies and Vines: Lane and Kline*, featuring works in jewelry and ceramics by husband and wife team, Stacey Lane and Michael Kline, and *Containment II: The Inside Story*, featuring ceramic boxes from more than thirty-five of the finest potters and sculptors in the country. The exhibitions open on May 7 and remain on view through June 25, 2011.

Rubies and Vines: Lane and Kline is an exhibit that will feature beautiful animal theme jewelry by studio jeweler Stacey Lane and stoneware pottery by Michael Kline with its organic and botanical themes. In much of her jewelry, Lane uses the remarkable lost-wax casting process. It enables her to transform soft, pliable wax into intricate metal objects. She leaves marks on her pieces that emphasize that

[continued on Page 34](#)