

# Weatherspoon Art Museum

continued from Page 38

Hannah Holshouser (photography), Paul Howe (sculpture), Gabriel Serpa (painting/sculpture), and Harry Swartz-Turflie (painting).

The artists in this graduating class use a variety of media and focus on an array of issues. Their MFA exhibition demonstrates the energy and commitment of the artists, who engaged in numerous critiques by faculty, visiting artists, and their peers to develop significant bodies of work.



Judy Pfaff, "Lemongrass", 2010, paper, bamboo, artificial flowers, rice paste, ink, dye, paint, wire, parasol and found images, 65 x 113 x 8 in. Museum purchase with funds from the Burlington Industries Endowment, the Judy Proctor Acquisition Endowment, the Robert C. Ketter Family

The Weatherspoon Art Museum first began collecting works of art in the 1940s. Since then, it has continued to enhance the quality and distinction of its collec-

tions through the acquisition of important works of art by gift, bequest, and even in times of economic challenges, by purchase. Besides caring for, preserving, and augmenting this outstanding collection, the Museum strives to make it readily accessible to the public. This summer, to fulfill that core mission, the Weatherspoon will feature recently acquired work by Nick Cave, Anne Chu, Helen Frankenthaler, Leon Kroll, Judy Pfaff, Edward Ruscha, Fred Tomaselli, and Jeff Whetstone, among many others.

The exhibition will highlight pieces acquired between 2009 and 2011 that have not yet been exhibited publicly. Comprised of sculpture, painting, works on paper, and photography, the assembly of work underscores the energy and diverse prongs of the Weatherspoon's permanent collection, and in particular, the museum's dedication to representing the art of its time. Also underscoring the exhibition is the spirit of adventure and risk taking that has long been a hallmark of the Weatherspoon Art Museum.

The exhibition was organized by Elaine D. Gustafson, Curator of Collections.

For further information check our NC Institutional Gallery listings, call the Museum at 336/334-5770 or visit (<http://weatherspoon.uncg.edu/>).

## Earthworks Gallery Opens in New Location in Greensboro, NC

Earthworks Gallery, focusing on NC made art, has opened its doors in the downtown South Elm Historic district of Greensboro, NC, known for its antique stores, art galleries and specialty shops.



Work by Molly Lithgo

Molly Lithgo and Jim Rientjes, proprietors, have operated Earthworks Studio just outside downtown Greensboro on South Cedar Street for over a decade. They decided to expand their business by opening Earthworks Gallery as a space to showcase and sell their ceramics and other artists' works.

Built in 1895, the store will operate out of a charming two story storefront, that has had its fair share of pots thrown here. The building, located at 500 S. Elm Street, was formerly South Elm Pottery owned and operated by Jim Gutsell. Gutsell has since retired from the space and moved his studio to Lithgo and Rientjes' space on South Cedar. "It was a good opportunity to get into this building, and keep pottery alive on this side of the tracks," com-



Work by Jim Rientjes

mented Rientjes.

Earthworks' primary focus will be pottery, but the gallery will also offer other gift items, such as jewelry, soap, note cards and candles; all made by North Carolina artisans. With North Carolina being one of the richest pottery states in the country, Lithgo and Rientjes will be stocking the shelves with a diverse selection of pieces from around the state, about a third being local to Greensboro.

"Local Representation is important but so is diversity," said Lithgo. "We want to represent potters local to Greensboro while also bringing in artists whose work will be new to the area."

Earthworks Gallery will be open Tuesday through Saturday, from 11am - 6pm, and Sundays, noon - 5pm.

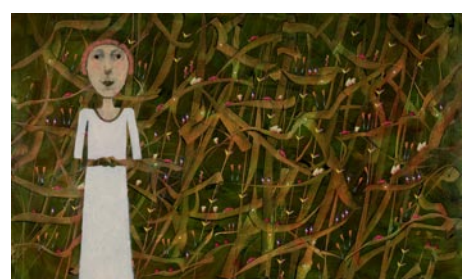
For further information check our NC Commercial Gallery listings, call the gallery at 336/275-1202 or visit ([www.earthworkspotterygallery.com](http://www.earthworkspotterygallery.com)).

## Tyler White Gallery in Greensboro, NC, Offers Works by Elizabeth Darrow, Kim Kesterson Trone & Zoot

Tyler White Gallery in Greensboro, NC, will present an exhibit of works by Elizabeth Darrow, Kim Kesterson Trone and Zoot (Terry Zash), on view from May 18 through June 20, 2012. A reception will be held on May 18, from 6-8pm.

Elizabeth Darrow offers the following statement, "For me, becoming engaged in, and carried along by the process, is what making art is all about. My paintings, as well as collages, emerge from the process itself, rather than from any preconceived plan of mine. My only 'plan' when embarking on a canvas is to layer colorful, gestural strokes of paint. My task then is to impose order to this initial chaos.

Page 40 - Carolina Arts, May 2012



Work by Elizabeth Darrow

The process moves itself along, taking unexpected turns as various shapes and colors are added to the equation. Out of a succession of layers an image emerges.

continued above on next column to the right

In the tradition of Abstract Expressionism, discovery comes through the process itself."



Work by Kim Kesterson Trone

Kim Kesterson Trone began painting at 6 years old. Her grandmother was a great painter and she inherited the "artistic gene". Soon she began private lessons and began her professional career by age 12. She has academic training from UNCG - a BFA, MFA, and awarded the Spencer Love Scholar in Fine Arts. Trone merges natural colors as they exist on the palette that springs from her mind's eye. This battle is usually won over by her color, which is symbolic of the fever or passion of life within the landscape. There are also quiet moments for the viewer to reflect on the beauty - beauty as it provides an oasis within the chaos of our everyday lives. Finding the depth in layers of color and with a clear perspective and balanced composition is her goal. Trone sometimes incorporates a vivid tropical palette, sometimes more muted with higher contrast - always inviting and exciting. Trone is represented by The Tyler White Gallery in Greensboro, The Fat Cat in Oak Ridge, Circa gallery in Asheboro, and The Little Gallery at Smith Mountain Lake in Smith Mountain Lake, VA.

Terry Zash, aka Zoot, began his adventure as an artist living a Nomad's life moving from one logging camp to another in the beautiful Cascade Mountains of Oregon. He had his first public fine art showing at the age of fourteen in northern California. After pursuing his art education on the west coast he traveled extensively and now lives and paints in North Carolina. During Zoot's travels he spent 2 years at the bottom of the Grand Canyon studying the colorful palate nature cre-

ated. His experience in life studies and the influence of our western culture inspired him as an artist.

For Zoot the splendor of nature and wonder of the world leaves a lasting impression that outlasts any one artistic movement. His style is not derived from specific period in art history, but rather 3-Dimensional storytelling. His unique style can be described as an all-embracing balance of converse yet connected imagery. Whether it's a graceful acrylic landscape, an abstract field or a 3-dementional metal wall hanging, Zoot's creations will evoke a feeling of visual energy.



Works by Zoot

Tyler White Gallery represents over 40 accomplished artists, recognized internationally, regionally and nationally, along with fine local painters and portrait artists. Ongoing gallery exhibitions and a wide variety of original art fill the space inviting visitors to relax, get inspired, and begin or add to their art collection. Artists' talks, painting workshops, the popular "lunch & learns," with accomplished artists, and special events are offered throughout the year. In addition, Tyler White offers corporate & residential art consulting services. Visitors are welcome to drop by anytime during gallery hours and participate in gallery openings and events. Call the gallery or visit the website for artists-led workshops, upcoming exhibitions, and more information. Whether you are an avid art collector, first time purchaser, or artist, Tyler White Gallery offers something for everyone!

For further information check our NC Commercial Gallery listings, call the gallery at 336/279-1124 or visit ([www.tylerwhitegallery.com](http://www.tylerwhitegallery.com)).

## JMR Sculptures Opens to the Public in Greensboro, NC

For the first time, Jay M Rotberg, founder of JMR Sculptures, is throwing open his studio doors and selling his Simply Love Collection directly to the general public at studio prices. He is launching his retail business with a gala grand opening on May 4, 2012, during Downtown Greensboro's First Friday from 6-9pm.

"Downtown Greensboro is working so hard to be supportive of the arts in the downtown area," Rotberg said. "I admire what they are doing and hope we can continue to expand the art scene even further to my location in Suite 240 at the Gateway Center on Elm and Lee streets. My studio is a downtown art venue where people can purchase art made in the Triad by a Triad artist."

Rotberg has been creating works of art and selling wholesale since 1997.

His work, which is cast both in resin and metal, can be found in shops, galleries, personal collections, and museum stores as well as public and private sites and collections in Greensboro.

Rotberg's popular Simply Love Collection celebrates human relationships. With simplicity and quiet dignity, his sculptures capture comfort in a hug, depict abandon and joy, convey compassion and understanding and inspire strength.

For those who can't make it to the First Friday event, operating hours for JMR Sculptures studio will be Monday through Friday, 10am to 4:30pm and by appointment.

For further information check our NC Commercial Gallery listings, call the studio at 336/389-0333 or visit ([www.jmrsculptures.com](http://www.jmrsculptures.com)).

## Artworks Gallery in Winston-Salem, NC, Offers Works by Mary Blackwell-Chapman and Mitzi Shewmake

Artworks Gallery in Winston-Salem, NC, will present the exhibit, *Forms and Figures*, featuring ceramic sculpture by Mary Blackwell-Chapman and Mitzi Shewmake, on view from May 1 - 26, 2012. A reception will be held on May 6, from 2-4pm.

Mary Blackwell-Chapman has created ceramic figures that are expressions of fairy tales - *Rapunzel*, *Snow White*, *Sleeping Beauty*, and others. Blackwell-Chapman has previously explored myths, the Goddess, Storyteller pots, and the epic of Gilgamesh. She states: "This series

concerning the oldest of oral storytelling traditions is a continuation of this work. With each piece, she is trying to capture one aspect of the tale, a perspective, that is not a straightforward re-telling, but that expresses some of the fantasies, anxieties, delights, and wisdom of the tale".

Blackwell-Chapman earned a BA in English Literature from Goucher College in Baltimore, MD, and an MA in Motion Picture from Northwestern University in Chicago. Her works are in collections in Virginia, West Virginia, Washington,

continued on Page 41