



Asheville Gallery of Art, Ltd
 16 College Street
 Asheville, NC 28801
 828-251-5796

the works of Floyd Kemp

www.ashevillegallery-of-art.com

Reception: 3rd of May 5 - 8 pm
 Show runs: May 1 - 31, 2013
 Monday - Saturday: 10am - 5pm
 Sunday 1 - 4pm



"From My Garden"



Asheville's Longest Established Fine Art Gallery - Across From Pritchard Park

BlackBird Frame & Art

continued from Page 21 / [back to Page 21](#)

visible strokes and lines. The ground is generally either paper, sanded boards or canvas. The use of soft pastels in fine art dates to the late 15th century, Leonardo da Vinci being among the earliest recorded to engage in its use. Since the 19th century, many famous artists, most notably perhaps Edgar Degas, have used pastels to a certain degree, some for complete painting, others for underpainting or finishing. Artists who favor pastels often cite the immediacy of the medium, its receptiveness to their spontaneity and the intimacy of its hands-on connection to the artist as reasons for their choice.

Throughout May, visit BlackBird to delight in the treasures created by these dedicated artists bringing new perspectives and techniques to an ages-old medium.

BlackBird Frame & Art is an inde-



Work by Kate Thayer

pendent gallery and custom frame studio owned by Pat and John Horrocks, located in north Asheville.

For further information check our NC Commercial Gallery listing, call the gallery at 828/252-3117 or e-mail to (john@blackbirdframe.com).

artists for the arrival of springtime in the mountains.

For further information check our NC

Commercial Gallery listings, call the gallery at 828/254-8577 or visit (www.thehaengallery.com).

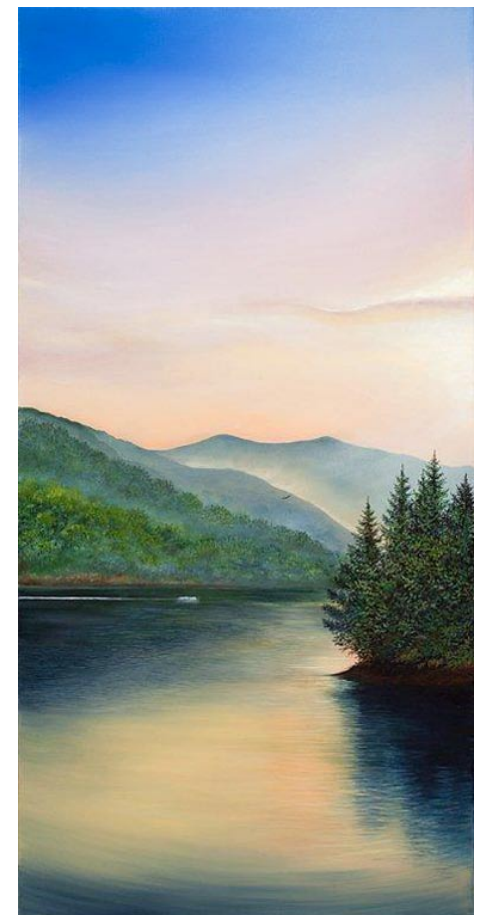
Woolworth Walk in Asheville, NC, Features Works by Olga Dorenko

Woolworth Walk in Asheville, NC, will present *Olga Dorenko: Painting*, on view in the FW Front Gallery, from May 1 - 30, 2013. A reception will be held on May 3, from 5-7pm.

Dorenko's work is concerned with color and light, inspired by local, national and international landscapes. As a student at a classical art school in the former Soviet Union, she spent a considerable amount of time mixing and blending colors. It is her use of color that lends a contemporary interpretation to her otherwise realist landscapes.

Dorenko has a deep appreciation for Asian art techniques and styles, and greatly admires the gentle light, vivid brushwork and painstaking detail of the Russian artist Ivan Shishkin. She is also continuously inspired by Nature's variable colors and the beauty found in both rural and urban landscapes. She has experienced many changes in her life. As a child, her family uprooted frequently and moved around the Soviet Union. Later, as a young mother, Dorenko emigrated to the United States. The beauty of nature is the constant in these changes. Flowers are beautiful on either side of the ocean, in any corner of the world. Life is ever-changing. Her paintings pursue the everlasting.

For further information check our NC Commercial Gallery listings, call the gallery at 828/254-9234 or visit (www.woolworthwalk.com).



Work by Olga Dorenko

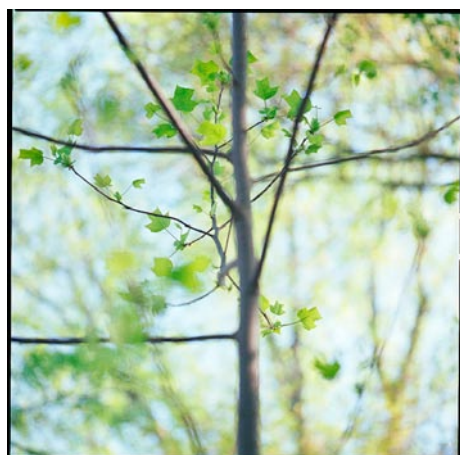
The Haen Gallery in Asheville, NC, Offers Works by Stephen Pentak & Kathryn Kolb

The Haen Gallery in Asheville, NC, is presenting *Dual Nature*, an exhibition of new work by Stephen Pentak and Kathryn Kolb, on view through May 25, 2013.

Stephen Pentak is an accomplished and celebrated artist known for his minimalist paintings of panoramic landscapes. He is fascinated by the reflections of color and light in the leaves of trees, in rivers and streams, and in the sky as the days and seasons change.

Kathryn Kolb's fine art photography includes color and black & white photographs of landscapes, trees and other plants from diverse natural environments. Her work explores both abstract and more representational constructions that often seem more akin to painting than photography.

Both artists are focused observers in the natural world around them and capture



Work by Kathryn Kolb

it eloquently in two different mediums. The Haen Gallery is pleased to present the exciting and fresh new work of these two

continued above on next column to the right

Don't see anything here about your exhibit or art space? Did you send it to us?

The deadline each month to submit articles, photos and ads is the 24th of the month prior to the next issue. This will be May 24th for the June 2013 issue and June 24 for the

July 2013 issue. After that, it's too late unless your exhibit runs into the next month. But don't wait for the last minute - send your info now.

And where do you send that info?

E-mail to (info@carolinaarts.com).