

# SC Commercial Galleries

continued from Page 85

Henderson and Stuart Lyle. Hours: Mon.-Sat., 10am-6pm & Sun., 1-5pm. Contact: 864/239-3882 or at [www.artistsguildgalleryofgreenville.com](http://www.artistsguildgalleryofgreenville.com).

**Catherine Hayes Art + Sculpture - Gallery**, 117 + 121 Cleveland St., Greenville. **Ongoing** - Specializing in American and European Fine Art, representing an array of accomplished artists with varying styles. Catherine Hayes also offers art consultant and art leasing services by appointment. The discussion series, "ART Talk," is typically free and held at the gallery every third Monday of the month from 7-9pm. Hours: Tue.-Fri., 11am-3pm or by appt. Contact: 864/353-6151 or at [www.catherinehayes-art.com](http://www.catherinehayes-art.com).

**Charlie Pate Gallery**, 11 Lois Ave., Greenville. **Ongoing** - Featuring original oil and pastel paintings by Charlie Pate, as well as drawings, prints and bronze sculpture. Pate's art is all representational. Hours: Mon.-Fri., 10am-5pm. Contact: 864/430-5967.

**Christopher Park Gallery**, 608-A South Main Street, Greenville. **Ongoing** - Offering handmade and humorous art by North and South Carolina artists. Hours: Tue.-Fri., 10am-6pm & Sat., noon-6pm. Contact: 864/232-6744 or at [www.christopherparkgallery.com](http://www.christopherparkgallery.com).

**Daly Designs Gallery**, 421 S. Main St., Greenville. **Ongoing** - The gallery continues to show many local artists who work in various mediums, and has expanded to include art from other areas. Liz Daly-Korybski creates jewelry from glass in her on site studio, and other artists can be seen creating in the gallery as well. Hours: Tue.-Thur., 11am-6pm; Fri., 11am-9pm; Sat., 11am-9pm; & Sun., 1-5pm. Contact: 864/325-4445 or at [www.dalydesigns.com](http://www.dalydesigns.com).

**Doug Young Studio and Gallery**, 12-A Lois Ave., Greenville. **Ongoing** - Featuring representational sculptures by Doug Young. Hours: Mon.-Fri., 10am-5pm. Contact: 864/430-3130 or at [www.dougyoungstudios.com](http://www.dougyoungstudios.com).

**Gallery at Grove**, 1312 Augusta St., Greenville. **Ongoing** - Featuring works by local and regional artists, including originals by local artist Joseph Bradley, Katie Walker, Kate Wofford Ambrose, and Ron Greenlee. Specializing in fine art and unique custom framing designs. Hours: Tue.-Fri., 10am-5:30pm & Sat., 10am-3pm. Contact: 864/235-4935 or at [www.galleryatgrove.com](http://www.galleryatgrove.com).



Work by Scott Harris

**New Gallery**  
**Gallery 17**, 17 W. North Street, Greenville. **May 1 - June 30** - "A New Perspective," featuring works by Scott Harris. A reception will be held on May 3, from 6-9pm. Much of the imagery chosen for Harris' exhibition focuses on Greenville, SC - the new urban development and architecture as well as the landscaped parks and rural areas. These spaces are part of everyday life and may seem ordinary, but Harris hopes that his method of visual explanation will allow these areas the opportunity to be seen in a new perspective. **Ongoing** - The gallery's primary focus is to introduce an incredible selection of local, regional and nationally collected artists to Greenville and the Upstate. The gallery specializes in contemporary fine art and sculpture with a focus on established artists. Many of our artists have been honored with museum exhibitions and have works installed in both private and corporate collections. In keeping a fresh perspective, Gallery Seventeen also exhibits the work of emerging talent that we are passionate about. Hours: Tue.-Thur., 11am-6pm; Fri.-Sat., 11am-7pm; or by appt. Contact: 864/235-6799 or at <http://gallery-seventeen.com>.

**Guy Stevens, Gallery/Studio**, 1263 Pendleton St., Greenville. **Ongoing** - Featuring original works in oil and watercolor by Guy Stevens. We also offer a collection of limited edition giclée and offset lithograph on paper and stretched canvas as well as hand textured and painted frames. Hours: Mon.-Fri. hours vary call ahead. Contact: 864/235-6748 or 864/915-8918.

**Hampton III Gallery**, 3100 Wade Hampton Blvd., 10 Gallery Center, Taylors. **Ongoing** - works by Sigmund Abeles, John Acorn, Dave Appleman, Jane Armstrong, J. Bardin, Carl Blair, Emery Bopp, Bette Lee Coburn, Jim Craft, Jamie Davis, Jeanet Dreskin, Tom Flowers, William Halsey, Wolf Kahn, James Kirby, Darell Koons, Paul Matheny, Corrie McCallum, Glen Miller, Mark Mulfinger, Charles Quest, Ed Rice, Merton Simpson, Laura Spong, Carl Sublett, Leo Twigg, Art Weger, Phillip Whitley, Harrell Whittington, Mickey Williams, Paul Yanko, and Jas Zadurawicz. Hours: Tue.-Fri., 1-5pm; Sat., 10am-5pm. Contact: 864/268-2771 or at [www.HamptonIIIGallery.com](http://www.HamptonIIIGallery.com).

**Little House Art Studios**, 602 Strange Rd., Taylors. **Ongoing** - Featuring exhibits of fiber art, mixed media collages and painting by Susan R. Sorrell and Anne K. Taylor's photography, paintings and collages. Hours: by appt. only. Contact: 864/517-4023 or at [www.littlehouseartstudios.com](http://www.littlehouseartstudios.com).

**Ilyn strong**, 119 North Main Street, Greenville. **Ongoing** - featuring the works of over 60 national custom jewelry designers and glass blowers. Hours: Mon.-Sat., 10am - 5:30pm. Contact: 864/233-5900 or at [www.Ilynstrong.com](http://www.Ilynstrong.com).

**Mary Praytor Gallery**, 26 So. Main Street, Greenville. **Ongoing** - Exhibit of gallery artists include; Scott Belleville, Judy Jones, Kent Ambler, Stephen Dell, Spela Brencic, Jack Burgess, Margaret Dyer, Ashley Norwood Cooper, Jonathan Fenske, Dobee Snowber, Jim Heiser, Mary Walker, Ken Page, Mark Mulfinger, and Mark Anderson. Hours: Tue.-Sat., 9am-5pm; Thur. & Fri. evenings & Sun. afternoons by appt. Contact: 864/235-1800.

**Midtown Artery**, 718-A S. Main St., West End, just one block below the Army/Navy Store and one block above The American Grocery Restaurant, Greenville. **Ongoing** - Featuring contemporary paintings by world renowned Andre Desjardins, Fidel Garcia and Anita Lewis. Also featuring original works by international artists Hengki Pudjianto, Eugenia Mangra, Yogendra Sethi and Victoria Stewart. Bronze sculpture by South Vietnamese artist Tuan and glass sculpture by Barry Entner can also be seen. Hours: Wed.-Sat., 11am-7pm, Sun., noon-5pm. Contact: 864/232-0018 or at [www.midtownartery.com](http://www.midtownartery.com).

**Olde Towne Galleries**, 1300 Laurens Road, Greenville. **Ongoing** - A fine art gallery featuring works by local, regional and international artists, including watercolor landscapes and florals by Judy Sahm, Celtic landscapes by Donna Nyzio, pottery by Veronica Inman, photography and hand-woven linens and garments by Gail Gray and Russian Gzhel ceramics and handpainted boxes. Hours: Tue.-Sat., 10am-5pm. Contact: 864/235-5592.

**Ric Standridge Gallery**, 1021 S. Main St., Greenville. **Ongoing** - We feature a continuing series of Standridge paintings and individual artist exhibitions as well as theme and invitational shows by artist from all geographic regions. We represent a diverse group of artistic styles of painting, sculptures and preeminent glass collection. Hours: Tue. & Thur., 10am-4pm or by appt. Contact: at [www.ricstandridge.com](http://www.ricstandridge.com).

**Sea Island Gallery**, 115 Pelham Road, Pelham Court Shopping Center, Greenville. **Ongoing** - Original SC & southwest paintings by Douglas Grier, raku pottery by Tim Tyler, oils on paper by Betsy Bayne and a wide selection of prints by many artists. Hours: Tues. - Fri., 10am - 5:30pm; Sat., 10am - 4pm. Contact: 864/271-2007.

**10 Central Avenue Studios**, 10 Central Ave., is centrally located in the Heritage Historic District of Greenville. **Ongoing** - The studios is a unique gallery and working space for professional and emerging artists that invites the public inside the artistic process through shows, events, education and conversations with working artists. We also offer services for giclée reproductions and framing. Featuring works by Laura K. Aiken, Joseph Ambuhl, Jeanne Blinkoff, Larry Coble, Deborah Feiste, Kay Larch, J.J. Ohlinger, Julia Peters, Georgia Pistolis, Jill Patterson Schmidt and Judith Woodward. Hours: Mon.-Fri., 10am-1pm & 2pm-5pm or by appt. Contact: Julia Peters at 864/370-0301 or at [www.10CentralAve.com](http://www.10CentralAve.com).

**The Clay People Gallery**, 1211 Pendleton St., The Flatiron Building, Greenville. **Ongoing** - Featuring contemporary figurative Raku clay sculpture by Angelique Brickner and Rhonda Gushee. Each month the gallery will present changing works beginning on Greenville's "First

Fridays" gallery hop. Clay sculpture demonstrations given for small groups and individuals by appointment or special announcement. Hours: Fri. & Sat., 10am-5pm; First Fridays, 6-9pm; and by appt. Contact: Rhonda Gushee at 513/315-1872 or at [www.TheClayPeople.net](http://www.TheClayPeople.net).

**New Gallery**  
**The Henderson Gallery**, 123B S. Main Street, across the street from the Westin Poinsett Hotel, beside Bellacino's Pizza, Greenville. **Ongoing** - The gallery is exhibiting the works of over 40 mostly local artists, but also a few from other states and countries. There is a great variety of art: paintings, sculpture, photography, charcoal, pastels, watercolors, wood, glass and jewelry. Hours: Mon., Tue. & Thur., 11am-6pm and Fri.-Sat., 2-8pm. Contact: 864/271-3002 or at <http://www.thehendersongallery.net/>.

**Village Studios and Gallery**, The Village of West Greenville, 1278 Pendleton St., two story yellow brick building on corner of Pendleton St. and Lois Ave., Greenville. **Ongoing** - We have 10 studios and the Gallery exhibits the art of these artists plus that of the other artists in the Village of West Greenville (Pendleton Street Arts District) The exhibit is ever changing and at any time there may be pottery, sculpture, paintings (oil and acrylic), realistic, abstract, expressionistic, batik, portraits, and framed assemblage. Hours: by appt. only. Contact: 864/295-9278 or at [www.villageartstudios.com](http://www.villageartstudios.com).

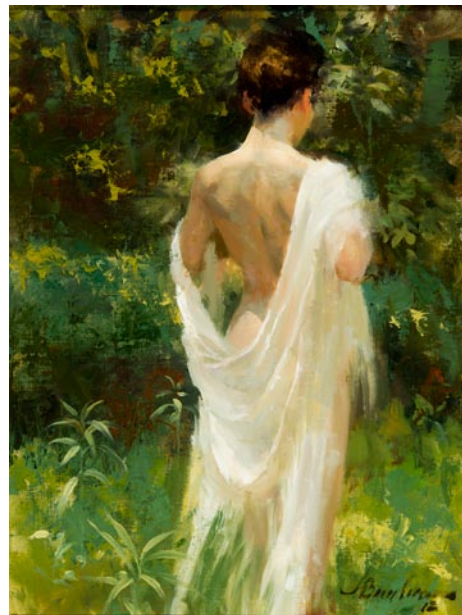
## Hilton Head Island

**Camellia Art**, 8 Pope Avenue, Hilton Head Island. **Ongoing** - Featuring custom framing and art gallery with works by Marge Agin, Evelyn B. Ballentine, Vickie Ebbers, Cassandra M. Gillens, Kelly Graham, Ben Ham, Bruce Holler, Bill Little, Louanne Laroache, Lynn Parrott, Laurie McIntosh, Brian Vaughn, and Martha Worthy. Hours: Mon.-Fri., 8:30am-5:30pm & Sat., 9am-1pm. Contact: 843/785-3535 or at <http://camelliaart.com>.

**Fastframe**, 95 Matthews Dr., unit A-6, Hilton Head Island. **Ongoing** - Featuring original work in oils, acrylics, pastels, water colors, and gouache, by David Randall and a variety of local artists. Also a broad mix of limited editions, prints and posters also available. Hours: Mon.-Fri., 10am-6pm & Sat., 10am-5pm. Contact: 843/342-7696 or at [www.fastframe.com](http://www.fastframe.com).

**Island Ideas Gallery**, The Fresh Market Shoppes, Wm. Hilton Pk., Hilton Head Island. **Ongoing** - Serving the Lowcountry since 1986. Representing local, regional and national artists in a wide variety of media. Extensive selection of prints, posters, photography, and giclée reproductions. Vast selection of framing materials. Offering fine art giclée reproduction services with state-of-the-art equipment. Hours: Mon.-Fri., 8am-6pm & Sat., 8am-4pm. Contact: 843/842-6261.

**jcostello gallery**, 8 Archer Rd., red fish restaurant building, Hilton Head Island. **Ongoing** - Representing an international landscape in compositions of oil, photography and printmaking, from the Lowcountry to Morocco, Budapest, Kyoto, Latin America, and Provence. Hours: Mon.-Sat., 1-9pm & Sun., 5-9pm or by appt. Contact: 843/686-6550 or at [www.jcostellogallery.com](http://www.jcostellogallery.com).



Work by Joe Bowler

**Morris & Whiteside Galleries**, 220 Cordillo Parkway, Hilton Head Is. **Ongoing** - Presenting a broad collection of 19th and 20th century representational American paintings and sculpture. Landscapes, still lifes, genre scenes, figures and historical subjects by many of America's leading representational artists, impressionists and expressionists are available for discriminating private, corporate and institutional collectors. Hours: M-F, 9am-5pm; Sat., 10am-3pm or by appt. Contact: 843/842-4433 and at [www.morriswhiteside.com](http://www.morriswhiteside.com).

**Picture This Gallery**, Cypress Square, 78 Arrow Road, Suite D, near Sea Pines, Hilton Head Island. **Through May 3** - "4th Annual A.R.T. Art Recycled from Trash 2013 Juried Exhibit," featuring original work, at least 75% recycled/ re-used/ re-purposed. **Ongoing** - Cool bohemian art gallery in the exclusive resort of Hilton Head Island. We offer custom picture framing, original artwork, and art & frame restoration. This adorable space has a comfortable atmosphere that beckons one to stay for a while. Owners Mira Scott & Mark S. Tierney have created a space to exhibit their work and select guest artists, sculptors, jewelers, photographers and writers are represented. Featuring work by Mira Scott, Mark S. Tierney, Steven A. Chapp, Alexis Kostuk, James Herrmann, Laura Mostaghel, Sheri Farbstein, and Rose Edin. Hours: Mon.-Fri., 9:30am-5:30pm; Sat., 9:30am-12:30pm or by appt. Contact: 843/842-5299 or at [www.picturethishiltonhead.com](http://www.picturethishiltonhead.com).

**Pink House Gallery**, 1503 Main Street Village, Hilton Head Island. **Ongoing** - Featuring original art work of regional and nationally known artists; plus unique handcrafted gift items. Also, the best selection of prints and posters in the area. Hours: Mon.-Fri., 10am - 6pm & Sat., 10am-5pm. Contact: 843/681-5169.

**Smith Galleries, Gallery of Fine Craft, Art, & Framing**, in the Village at Wexford, upstairs in Ste. J-11, 1000 William Hilton Parkway, Hilton Head Island. **Ongoing** - Hilton Head's complete gallery representing more than 300 of the country's finest craftsmen offering the finest in the area of jewelry, kaleidoscopes, wooden jewelry boxes, Sticks furniture, art glass, kitchen utensils, metal and pottery. The gallery carries original art as well as fine prints and reproductions and offers complete framing services. Hours: Mon.-Sat., 10am-6pm. Contact: 843/842-2280 or at [www.smithgalleries.com](http://www.smithgalleries.com).

## Lancaster

**Bob Doster's Backstreet Studio, Gallery, & Garden**, 217 E. Gay St., at the intersection of White St. & Gay St., one and one half blocks east of Main St., Lancaster. **Ongoing** - Featuring works by award winning sculptor Bob Doster, along with changing exhibits of local, regional, and national artists working in all mediums. Hours: by appt. only. Contact: 803/285-9190 or at [www.bobdoster.com](http://www.bobdoster.com).

**Gallery 102**, 102 Williams Street, Lancaster. **Ongoing** - Lancaster's newest gallery features works by artists from throughout the region and beyond. Included are jewelry, paintings, photography, pottery, functional artwork, sculpture, folk and fine arts. Hours: Mon.-Wed., 9am-5pm & Sat., 9am-1pm. Contact: 803/804-1902 or e-mail at [info.gallery102@gmail.com](mailto:info.gallery102@gmail.com).

## Latta

**RJK Frames and Things**, 112 E. Main Street, Latta. **Ongoing** - Featuring Imperial Russian bone china, exceptional gold trimmed lacquer boxes, Soviet propaganda posters, rare Russian Orthodox Icons and Avant Garde drawings. Hours: Tue.-Sat., 8am-6pm. Contact: 843/752-9319 or <http://www.rjkframesandthings.com/>.

## Lexington

**Mary Elliott Williams' Studio**, 1044 Hope Ferry Rd., Lexington. **Ongoing** - Precious Faces, artworks mainly in pastel and oil, commissions accepted. Hours: by appt. Contact: 803/356-0381 or at [www.artistsofthesouth.com](http://www.artistsofthesouth.com).

**Sandlapper Art & Frame**, 711 E. Main St., Suite M, downstairs in Lexington's Historic Old Mill, Lexington. **Ongoing** - Offering custom picture framing and fine art sales. Also handmade gifts such as pottery, jewelry, metal art, etc. The store has a very "coastal" flair but all mediums and subjects are exhibited. Hours: Tue.-Fri., 10am-6pm; Sat., 10am-3pm; & by appt. Contact: 803/785-4278 or at [www.sandlapperart.com](http://www.sandlapperart.com).

## Mt. Pleasant - Isle of Palms - Sullivan's Is.

**Accent Framing & Gallery**, 1303 Ben Sawyer Blvd., Mt. Pleasant. **Ongoing** - Original art by many of the Lowcountry's best artists featuring Martin Ahrens, Fletcher Crossman, Lynn Salkeld, Charles Parnell and Shea Fowler. Hundreds of prints and photographs in stock. We also offer painting lessons by master artists. Hours: M.-F., 10am-6pm & Sat., 10am-4pm. Contact: 843/884-5828.

**Adele's Pottery Studio & Gallery**, 1659 Middle St., Sullivan's Island. **Ongoing** - Featuring wheel thrown & hand-built clay works by Adele Deas Tobin. Also offering classes for children and teens. Pottery on the wheel Sept.-May. Hours: daily, 11am-5pm & by appt. Contact: 843/883-9545.

continued on Page 87