

Some Exhibits Still on View

continued from Page 18

opportunity to learn how *National Geographic* magazine picture editors work closely with the photographers to select images and tell a story. Video vignettes will present first-person accounts that reveal the photographers' individual styles, passions, and approaches to their craft. For further information check our NC Institutional Gallery listings, call the Museum at 704/337-2000 or visit (www.mintmuseum.org).

The NC Museum of History in Raleigh, NC, is presenting *Formed, Fired and Finished: Art Pottery from the James-Farmer Collection*, on view through Aug. 3, 2014. "The exhibition showcases examples of the transition to art pottery and its results," said Michael Ausbon, Associate Curator of Decorative Arts. "The pottery in the exhibit represents some of the influential potters, families and individuals who contributed to the change to art pottery in North Carolina." The exhibit also features works by contemporary potters Ben Owen III of Seagrove, NC, Mark Hewitt of Chatham County, NC, and others who continue the art pottery tradition. For further information check our



In the early 1900s, Tar Heel potters began using innovative colorful glazes and reinterpreted traditional shapes to transform their vessels into decorative items to sell. Photo courtesy of the NC Museum of History

NC Institutional Gallery listings, call the Museum at 919/807-7300 or visit (www.ncdcr.gov).

Skyuka Fine Art in Tryon, NC, Features Exhibit of Equestrian Art

Skyuka Fine Art in Tryon, NC, will present *Block House Equestrian Art Exhibit-2014*, in honor of Tryon's 68th Block House Steeplechase Race, on view from May 9 - 30, 2014. A reception will be held on May 9, from 5-8pm.

Skyuka Fine Art, in collaboration with Tryon Riding & Hunt Club, is proud to present its second *Block House Equestrian Art Exhibit*. This group show will first be presented at F.E.N.C.E. on May 2, during Tryon Riding & Hunt Club's kick off celebration the evening before the famed race, as well as on May 3, during the race. Then the show will move into Skyuka Fine Art's gallery space.

Famous equestrian artists, many with the American Academy of Equine Art, and well known plein air landscape artists have been invited to participate in this unprecedented show. These artists will be featuring their equine and pastoral art in a variety of techniques and media. Artists include: Jan Lukens, Tucker Bailey, Booth Malone, Ann Malphrus, Valerie Hinz, Mary Neely, Linda Luster, Jim Carson and Richard Christian Nelson. The show will focus on original artwork, however some giclees and framed prints will also be available.

Award-winning artist Richard Christian Nelson had the distinct honor of creating the artwork featured in this year's TR&HC's Block House Steeplechase poster (also featured here in our show logo). Hailing from Detroit, MI, where he earned his BFA from The Center for Creative Studies, and took post graduate fine art courses at Wayne State University, Nelson has been working as an artist ever since. His career started as an illustrator, then as a portrait artist, gallery artist, and instructor. Nelson's poster artwork will be available as framed giclees in multiple sizes.

Booth Malone is one of the premiere equestrian artists in the country; his paintings have appeared on the cover of numerous horse-oriented magazines. In 2006 he was Official Artist of the Breeder's Cup; and in 2007 Featured Artist for the Masters of Fox Hunting Association Centennial Exhibit. His forte is capturing movement, gesture and nuance in people and animals with style and originality. Booth's palette is distinctively vibrant and fresh and his technique and compositions are unmatched in the world of sporting art.

Mary Neely has had an amazing art-filled education painting en plein air for 15 summers in France. These summers followed another impressive student history that includes studying at University of Michigan, Kentucky, Dayton Art Institute, the Scottsdale Artists School, as well as studying under Daniel Greene at the Art Students League of New York. Neely's work reflects this in that her works are breathtakingly

beautiful in color, composition, and application.

With two art degrees, Linda Luster has worked as an illustrator, a photographer, and a director of exhibits for the North Carolina Museum of History. Although horse training had been a passion, she is now a devoted equestrian artist and only trains occasionally. Her work has been featured on the cover of the *Chronicle* frequent times and as an artist has been voted overall as being one of the magazine's favorites. Luster's work shows the emotional connection and intimate knowledge of her subject indicative of a life devoted to horses.

Tucker Bailey grew up in northern Minnesota, and it was there that she developed her love of nature. Horses became a part of her life at an early age and remain so. She worked at a foundry for a few years learning the art of bronze casting and that experience proved valuable to this day. Doing both painting and sculpting lends a fresh perspective to each new piece she works on.

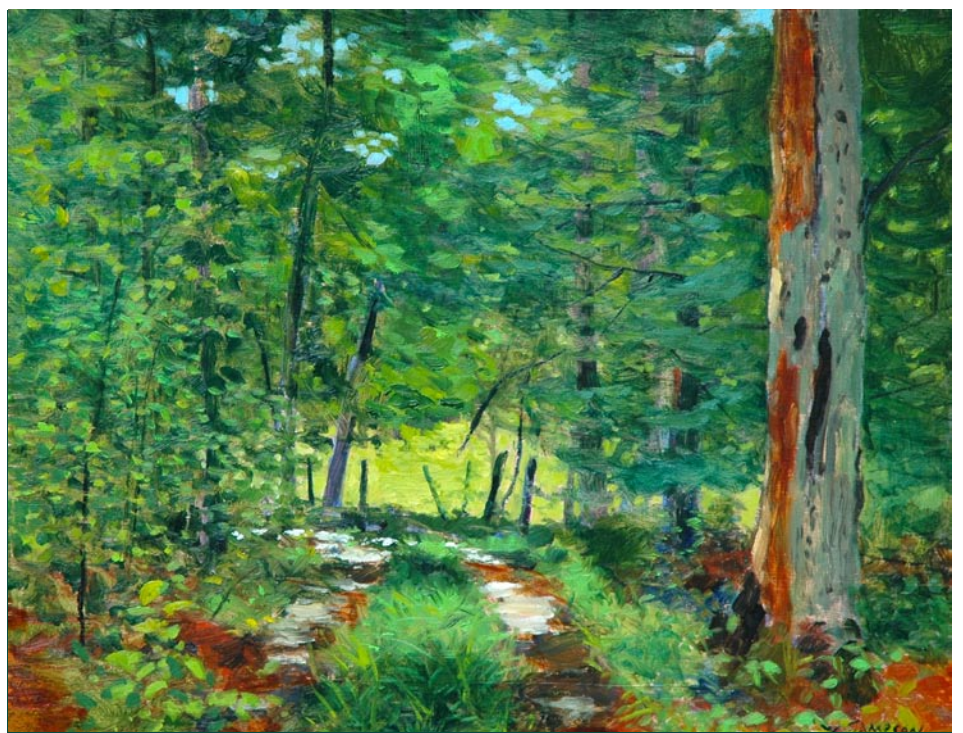
Equestrian portrait artist Jan Lukens has been awarded a painting exhibition at the Smithsonian Institute in Washington, DC, for winning top honors in a national portrait competition. His work has been featured on the covers of *The Chronicle of the Horse*, and in the pages of *The Artists' magazine*, *The Equine Image*, *The Canine Image*, *Ink*, and *Show Circuit*. His equine portraiture is outstanding and distinctively different.

Ann Malphrus resides in Greenville, SC, and although she showed a strong interest in art early on, she chose to spend her time first in the barn and then in Veterinary School. Career and family meant that her interest in horses and art would be put aside for years, until 2012 when her lifelong dream of melding those two interests materialized in a week long class on sculpting the horse. Malphrus' combination of spot-on anatomy, representation of a palpable emotion, and her intriguing mottled technique are an impressive union resulting in captivating work. We look forward to seeing many more great equine sculpture coming from this gifted and emerging artist.

A Canadian farm girl, Valerie Hinz is an equestrian and animal painter. Some of Hinz's recent accolades include: official artist for the 1999 Queen's Plate and 2003 Breeder's Cup, and Artist's Choice "Best of Show" at the 2009 and 2011 Calgary Stampede Western Art Showcase, just to name a few. Hinz's soft impressionistic strokes are always inspired by light and allow the animals beauty and character to shine through.

Jim Carson's work can best be described as "fresh and painterly". Cutting through to the essence, simplifying, and finding balance is his goal. Carson has been influenced through various workshops with Ken

continued above on next column to the right



Carolina Logging Road

16 x 20 inches

WILLIAM JAMESON WORKSHOPS 2014

"Spring on the Blue Ridge," Saluda, NC

May 15 - 17, 2014

"Fall in Colorado"

September 1 - 5, 2014

"Fall on the Blue Ridge," Saluda, NC

October 20 - 24, 2014

"Workshop: For Your Painting Group!"

Dates you choose

I can conduct a workshop planned especially for your location! Please contact us for planning and organizing a workshop in your area for your art organization or guild.

Each William Jameson Painting Workshop is designed to be an educational and entertaining experience. Along with exhilarating travel, students from beginner to advanced will receive one-on-one instruction in oil, watercolor or acrylic and pen and ink sketching.

Whether the travel is down the mountain or to the Bahamas or Italy, you will be with like-minded folks who share your love of art. There will be six hours of instruction each painting day at sites I have carefully selected for their architectural interest or appealing landscapes. Each day will include demonstrations, critiques and help with photography for use in painting your own work of art. All workshops include a "welcome" party and some workshops include private museum tours or excursions to special venues that we have cultivated over the years.

Non-painter companions are always welcome! Our workshop trips take us to breathtaking places where there is something of interest for everyone. Of course, special pricing is available for these companions. Please see specific workshop information for additional descriptive information.

Detailed info is available at www.williamjameson.com or call 828.749.3101.

Auster, Marianne Dunn, Kevin MacPherson, Kenn Backhaus, and John Budicin. He now conducts his own workshops throughout the year. Carson prefers painting in "plein air" and there is a true simplicity and freshness to his paintings that distinguishes them, giving them a character of their own.

His pastoral farm scenes are a refreshing addition to this exhibit.

For further information check our NC Commercial Gallery listings, call the gallery at 828/817-3783, or visit (www.skyuka-fineart.com).

Caldwell Arts Council in Lenoir, NC, Features Works by Thomas Sayre

The Caldwell Arts Council in Lenoir, NC, will present *New Works by Thomas Sayre: From Golden Valley to Edgemont*, on view from May 2 - 30, 2014. A reception will be held on May 2, from 5-7pm.

Most well-known locally for his 2012 sculpture "Across the Grain" in downtown Lenoir, Sayre is also an internationally renowned sculptor, artist and designer

Sayre says, "For almost three decades my work as an artist has played with ideas about human control versus serendipity (or what some would call chance), the relationship between human-made objects and the natural landscape, as well as the differences between person-built versus nature-built forms."

Sayre continues, "[The exhibit] *From Golden Valley to Edgemont* marks an enduring interest, spanning for 30 years, in the rural structures of this area and how they relate to their natural landscape. From my first house built in northern Rutherford County to now, I have a fascination with how abandoned rural structures (barns, fences, and houses) poignantly return to the earth over time. The scraped tar pieces are about the rhythm of nailed-up boards and the light shining through from behind, of surfaces which come to life as they weather, and visual patterns which are more interesting as they bend and twist away from their once crisp 'rectilinearity.' While all completed in 2013, these works span back to drawings done decades ago."

The earthcast wall pieces express a similar tension between the human tool and the texture, color, and resistance of the earth into which the castings are made. Related



Work by Thomas Sayre

to *Across the Grain*, the large earthcasting at the intersection of Harper and Church Streets, these smaller works are cast against wet earth which has been hammered, whacked, and poked with various tools to create the pattern.

"It is a pleasure to be back in Caldwell County in the landscape which has so affected my work all the way from Golden Valley to Edgemont."

The Caldwell Arts Council presents monthly and quarterly exhibits, education and collection programs that foster cultural arts in Caldwell County. The Caldwell Arts Council's programs are supported by the North Carolina Arts Council, a division of the Department of Cultural Resources and by individual and corporate donors.

For further information check our NC Institutional Gallery listings, call the Council at 828/754-2486 or e-mail to (info@caldwellarts.com).

Carolina Arts, May 2014 - Page 19