

# Mint Museum Uptown

continued from Page 15

other crafts represented at the museum, such as ceramics, glass, and metalwork. Like them, shoemaking at the highest level of quality requires a thorough knowledge of one or more materials with unique characteristics - in this case mainly leather, but also fabric, plastics, and other substances. Such knowledge is obtained through many hours of practice, whether the techniques used are centuries old or twenty-first century.

As with other crafts, industrialization changed shoemaking, enabling mass production and introducing new materials. Yet the desire for bespoke (custom-made) footwear persisted, and so did traditional methods. Today, different shoemakers occupy different points on a continuum of approaches from the most hands-on to the most automated. Since the 1980s there has been a resurgence of interest in the craft from both hobbyists and entrepreneurs who work in a studio setting, using relatively few machines. In the twenty-first century, others have used innovative technologies such as CAD (computer-assisted design) and 3D printing to radically rethink the design process and end product. *Pumped* features footwear ranging in date from the early 1700s to 2015. In addition to over one hundred pairs of shoes and related materials, the exhibition includes a display of shoemaking tools.

This exhibition was organized by The Mint Museum and generously sponsored by The Founders' Circle Ltd.



Saks Fifth Avenue (retailer; New York, 1902-). Evening/Cocktail Shoes, circa 1965, silk grosgrain ribbon, kid leather, crystal rhinestones. Charles Mo Collection. 2004.8.16b. Collection of The Mint Museum, Charlotte, North Carolina.

Special exhibition admission is required in order to view *Pumped* along with its companion exhibition drawn from the Mint's permanent collection, *Here & Now: 80 Years of Photography at the Mint*. Admission is \$24 for adults with discounts for students, seniors, and children, and Mint members always receive unlimited free admission.

The exhibition will be accompanied by a slate of public programming including a "Taste of the Mint" tour, a Sunday Fun Day, and workshops aimed at teen students ages 14-18 as part of the NexGen Mint program. Details on programming are available at ([www.mintmuseum.org/happenings](http://www.mintmuseum.org/happenings)).

For further information check our NC Institutional Gallery listings, call the Museum at 704/337-2000 or visit ([www.mintmuseum.org](http://www.mintmuseum.org)).

## Lark & Key Gallery in Charlotte, NC, Features Exhibition Focused on Animals

Lark & Key Gallery and Boutique in Charlotte, NC, will present *Wild Life*, which features a cast of creatures, big and small, from Elizabeth Foster, Duy Huynh, Vicki Sawyer, Mary Alayne Thomas and guest Susan Hall, on view from June 3 through July 30, 2016.

The artists explore the wonder and whimsy of the natural world, bringing animals to life in a variety of styles. Foster is a storyteller, whether it be a single fox sitting for a portrait or a group of animals frolicking amongst the landscape, her folk inspired paintings have a feeling of nostalgia. Huynh combines elements from wildlife with the complexities of the human condition to create dreamlike metaphorical narratives.

The whimsical paintings of Vicki Sawyer showcase animals, in incredible detail, with flower 'hats' and other adornment inspired by their natural environments. Thomas's colorful, modern day fairytales include flora and fauna in atmospheric settings. Guest artist Susan Hall's paintings, in soft muted tones, feature timeless animal portraits enveloped by inlaid fabric patterns.



Details of works by Susan Hall & Ronan Peterson

For featured potter Ronan Peterson inspiration comes in the form of surfaces found in nature, specifically growth and decay. His functional earthenware pots are abstractions and stylizations of trees, rocks, mushrooms, seedpods and other natural phenomena; accented with an occasional insect. With a mix of patterns, vivid colors, contrast of glossy and matte surfaces, and thick lines Peterson hopes to create a comic book interpretation of the natural world.

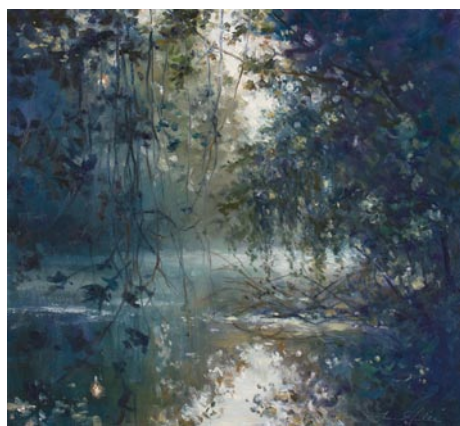
For further information check our NC Commercial Gallery listings, call the gallery at 704/334-4616 or visit ([www.larkandkey.com](http://www.larkandkey.com)).

## Jerald Melberg Gallery in Charlotte, NC, Offers Works by Thomas McNickle

Jerald Melberg Gallery in Charlotte, NC, is presenting *THOMAS McNICKLE: Image and Memory*, a new exhibition of paintings and watercolors by Pennsylvania artist Thomas McNickle, on view through July 2, 2016.

Already known as a landscape virtuoso, he will present a series of new representational oil paintings and watercolors alongside previous work from his archives. This exhibition marks the first time McNickle will release art from his own personal archives, with selections including works with personal significance as well as some which have been in museum shows. With this pairing of old and new, viewers and admirers have the opportunity to enjoy observing the subtle technical progressions McNickle has made in his career.

McNickle's work can be found in numerous public collections including the Butler Institute of American Art, the Mint Museum of Art, the Hoyt Institute of Fine Art, the Gibbes Museum of Art, the Mor-



Work by Thomas McNickle

ris Museum of Art, Vero Beach Center for the Arts and Kansas State University. This is the artist's 12th exhibition with the gallery.

Jerald Melberg Gallery will host a Coffee and Conversation artist lecture with Thomas McNickle on Saturday, June 4 at

continued above on next column to the right

**WILD LIFE**  
June 3rd - July 30th  
artwork by  
Elizabeth Foster  
Susan Hall  
Duy Huynh  
Vicki Sawyer  
Mary Alayne Thomas

with pottery from  
Ronan Peterson

**Lark & Key Gallery**  
128 E. Park Ave, Ste B  
Charlotte, NC 28203  
704.334.4616

 [www.larkandkey.com](http://www.larkandkey.com)



vicki sawyer

11am.

Jerald Melberg Gallery prides itself on enjoying a fine reputation based on years of honesty and integrity among our colleagues and collectors. We provide the professionalism, proper knowledge and expertise needed to place quality works of art in any public, private or corporate collection.

For further information check our NC Commercial Gallery listings, call the gallery at 704/365-3000 or visit ([www.jeraldmelberg.com](http://www.jeraldmelberg.com)).

## Ciel Gallery in Charlotte, NC, Features Works by Kelly Carlson-Reddig, Jackie Radford, and Leigh B. Williams

Ciel Gallery in Charlotte, NC, will present *Re-Action*, a fine arts exhibit which features the works of mixed-media fabricator Kelly Carlson-Reddig, book-artist Jackie Radford, and painter Leigh B. Williams, on view from June 3 - 25, 2016. A reception will be held on June 3, from 6-9pm. Gallery visitors can contribute photographic posts to the "art-re-action-poetrymashup-selfie-extravaganza".

The creative practices of these three artists span different media and scales, and the *Re-Action* theme inspired surprising 2-D and 3-D investigations that capture the imagination.

Kelly Carlson-Reddig is a Registered Architect, Associate Professor, and the Associate Director of the School of Architecture at UNC Charlotte. She earned her Master of Environmental Design in Architectural Theory at Yale University and her Bachelor of Architecture at Texas Tech University. Her artwork spans across scales, from jewelry (at the scale of the body), to paintings (at the scale of the wall), to collaborative installations (at the scale of architectural space). The conceptual umbrella connecting these works is "Tectonic-Arts", which includes her passions for TECTONICS, TECHNIQUE, and MATERIALITY.

Jackie Radford is a bookbinder and book artist born in Alabama and raised in North Carolina. Radford's exploration of the book as an art form was inspired by her time at Penland School of Craft where she studied sewn bindings. Her current work pushes the book form into the realm of sculpture; challenging preconceptions and borders. By binding a book onto a metal armature, Radford manipulates the book into organic and graphic forms.

## Elder Gallery in Charlotte, NC, Features Works by John Folchi

Elder Gallery in Charlotte, NC, will present *Town and Country*, the first solo exhibition of paintings by New York artist John Folchi, on view from June 3 - 30, 2016.

The exhibition will include works depicting urban and rural landscapes of New York.

Folchi was born in Bronx, NY, and

**PROVIDENCE GALLERY**

601-A Providence Road  
Charlotte, NC 28207  
704.333.4535  
[www.ProvidenceGallery.net](http://www.ProvidenceGallery.net)



Work by Kelly Carlson

Leigh Williams is a Charlotte painter and art catalyst with a heart for the soul of our city. She holds a BA in Fine Arts from the College of William and Mary and has 35+ years of painting and teaching experience. She creates alcohol ink, acrylic, and mixed media paintings on a variety of substrates, including traditional canvas, polymer paper, and infused aluminum. Her works range from free flowing landscapes to purely abstract creations, which capture light and color in a transcendent manner.

Ciel Gallery is a Fine Art Collective representing a few dozen local artists working in a wide variety of media.

For further information check our NC Commercial Gallery listings, call the gallery at 704/496-9417 or visit ([www.cielcharlotte.com](http://www.cielcharlotte.com)).

continued on Page 19