

# SC Institutional Galleries

continued from Page 41

House (1772) and the Joseph Manigault House (1803), as well as the Dill Sanctuary, a 580-acre wildlife preserve. Admission: Yes. Hours: Mon.-Sat., 9am-5pm & Sun., 1-5pm. Contact: 843/722-2996 or at ([www.charlestonmuseum.org](http://www.charlestonmuseum.org)).

**ALTERNATE ART SPACES** - Charleston **Ashley River Tower**, Public area at Medical University of South Carolina, Charleston. **Ongoing** - "Contemporary Carolina Collection @ Ashley River Tower," featuring the largest collection of original, contemporary South Carolina art on permanent display, including 885 works by 53 talented artists, sculptors and photographers in South Carolina. Artists included are: Lucille Akinjobe, Jack Alterman, Thomas Blagden, Jr., Carl Blair, Patti Brady, Keith Brown, Julia Cart, Eva Carter, Jocelyn Châteauevert, Lese Corrigan, Townsend Davidson, Linda Fantuzzo, Buddy Folk, Squire Fox, Mary Edna Fraser, Cassandra Gillens, Anthony Green, Jon Holloway, Ann Hubbard, Lisa Salosaari Jasinski, Erik Johnson, Kim Keats, Arianne King Comer, Kit Loney, Paul Mardikian, Nancy Marshall, Paul Matheny, John McWilliams, Sue Middleton, Marge Moody, Gordon Nicholson, Jane Nodine, Marcelo Novo, Karin Olah, Matt Overend, Rick Rhodes, Ed Rice, Molly B. Right, Susan Romaine, Kristi Ryba, Virginia Scotchie, Laura Spong, Tom Stanley, Christine Tedesco, Colleen Terrell, Leo Twiggs, Tjelda Vander Meijden, Mary Walker, Sue Simons Wallace, Joe Walters, Sam Wang, Enid Williams, Manning Williams, and Paul Yanko. Hours: daily, 8:30am-5pm. Contact: Kathleen Ellis, Director of National Communications, MUSC, at 843/792.5602 or e-mail at ([ellisk@musc.edu](mailto:ellisk@musc.edu)).

**Marion Square**, Calhoun Street between Meeting and King Streets, Charleston. **Through June 10** - "2017 Piccolo Spoleto Outdoor Art Exhibition". The "Piccolo Spoleto Outdoor Art Exhibition, now in its 38 year, offers works by 84 artists from South Carolina. We believe it is the longest running outdoor fine art show in the US. Sponsored by the City of Charleston Office of Cultural Affairs. There are daily art demonstrations at 11am and 2:30pm. Hours: Mon.-Thur., 10am-5pm & Fri.-Sun., 10am-6pm. Contact: Call the Office of Cultural Affairs at 843/724-7305 or visit ([www.piccolospoleto.com](http://www.piccolospoleto.com)).

**The Old Slave Mart Museum**, 6 Chalmers Street, Charleston. **Ongoing** - The Museum recounts the story of Charleston's role in this interstate slave trade by focusing on the history of this particular building and site and the slave sales that occurred here. Hours: Mon.-Sat., 9am-5pm. Contact: The Office of Cultural Affairs at 843/958-6467 or at (<http://www.charlestonarts.sc/>).

**Wragg Square Park**, Charlotte and Meeting Sts., Charleston. **June 2-4** - "2017 Piccolo Spoleto Crafts Shows". Between the two weekends, nearly 100 fine craft artists from around the country will be selling their crafts. Many artists will be demonstrating their crafts either during formal demonstration presentations or during informal question and answer sessions with booth visitors. The shows will be held in Wragg Square Park at Meeting and Charlotte Streets in downtown Charleston. The park's entrance and walkways have recently been upgraded. Adult admission is \$3 on Friday and Saturday and \$1 on Sunday. Seniors 65 and older and children 18 and under are admitted free. The show hours are 10am - 6pm on Fridays and Saturdays and 11am-5pm on Sundays. Detailed schedules for the shows and demos offered are available at ([www.finecraftshowcharleston.com](http://www.finecraftshowcharleston.com)). Call the Office of Cultural Affairs at 843/724-7305 or visit ([www.piccolospoleto.com](http://www.piccolospoleto.com)).

## Clemson Area

**Sikes Hall Showcase**, Clemson University, Ground Floor Sikes Hall, 101 Calhoun Drive, Clemson. **Through Oct. 4** - "Ink Travels Art Exhibit". "Ink travels" refers to the constant challenge of keeping an active print shop clean. In the context of this exhibition, the term also refers to the wide-reaching influence of Professor Sydney A. Cross's teaching and mentoring. Similar to how "ink travels" this exhibition showcases Cross's legacy as an educator and illustrates the positive impact she has had on artists across the nation. The exhibition is a thoughtful tribute to the quality of Cross's teaching and a reflection on the Clemson Family in the Visual Arts. Hours: Mon.-Fri., 8:30am - 4:30pm. Contact: call Denise Woodward-Detrich, Lee Gallery Director at 864/656-3883 or at (<http://www.clemson.edu/centers-institutes/cva/>).

**The ARTS Center**, 212 Butler St., Clemson. **Ongoing** - Featuring works by local and regional artists. Hours: Mon.-Thur., 10am-5pm & Fri., 10am-2pm. Contact: 864/633-5051 or at ([www.explorearts.org](http://www.explorearts.org)).

**ALTERNATE ART SPACES** - Clemson **CAAH Dean's Gallery**, 101 Strode Tower, Clemson University, Clemson. **Through Oct. 11** - "A Sense of Place: Clemson • Drawings and Watercolors by James F. Barker. As an architecture student, alumnus, dean, president emeritus and now professor of architecture, James F. Barker gives a unique perspective. His exhibit captures a sense of community that portrays a richness, depth and love for the Clemson campus. Hours: Mon.-Fri., 8am-4:30pm. Contact: call Denise Woodward-Detrich, Lee Gallery Director at 864/656-3883 or at (<http://www.clemson.edu/centers-institutes/cva/>).

**Madren Conference Center**, Clemson University, Clemson. **Ongoing** - Featuring wood and steel bird carvings by Grainger McKoy. Hours: regular building hours. Contact: Peter Kent at 864/656-0382 or e-mail at ([peter.kent@clemsonnews.clemson.edu](mailto:peter.kent@clemsonnews.clemson.edu)).

**The Fran Hanson Discovery Center**, South Carolina Botanical Garden, Clemson University, Clemson. **Featured Artists Gallery, Ongoing** - Featuring works by Nancy Basket, Sue Figliola, Sue Grier, Sandy King, Jo Ann Taylor and Phil Garrett, on a rotating basis. **Elizabeth Belser Fuller Gallery, Ongoing** - This collection of watercolors, mixed media and pen & ink drawings was generously donated by a dear friend of the SC Botanical Garden, Elizabeth Belser Fuller. This incredible collection ranges from 1947 to 1992. New pieces have been added this year in celebration of Belser's 97th birthday. Hours: Mon.-Sat., 10am-4pm. Closed University Holidays and Home Football Game Saturdays. Contact: 864/656-3405 or at ([www.clemson.edu/scbg/](http://www.clemson.edu/scbg/)).

## Columbia Area

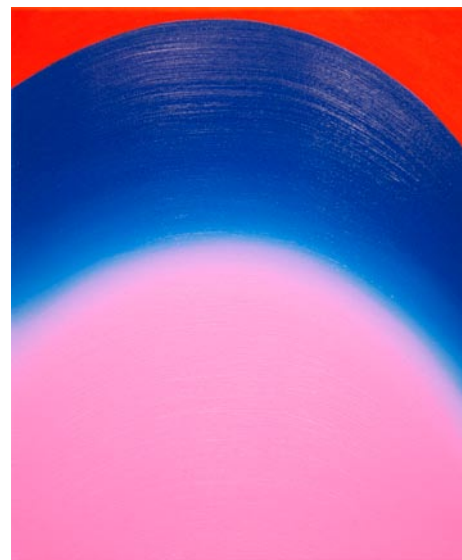
**Columbia Museum of Art**, Main & Hampton Streets, Columbia. **Through June 11** - "Enduring Spirit: The Art of Tyrone Geter". The Columbia Museum of Art is proud to present the major spring exhibition showcasing an all-new series of works from esteemed Columbia artist Tyrone Geter. The approximately two dozen large-scale charcoal and pastel drawings are the latest manifestations of Geter's lifelong goal of ardently describing the black experience in America through his uniquely personal and profound art. **June 2 - Aug. 27** - "ReTooled: Highlights from the Hechinger Collection," an engaging and thought-provoking look at the unexpected subject of tools. From the collection of American hardware-store tycoon John Hechinger, "ReTooled" features more than 40 paintings, sculptures, works on paper, and photographs that provide a dynamic entry point into the rich themes, materials, and processes of 20th-century art. "ReTooled" celebrates the prevalence of tools in our lives with art that offers affectionate, sometimes playful, tributes to tools as functional objects. It profiles 28 visionary artists including major names such as Arman, Richard Estes, Jacob Lawrence, Fernand Léger, and H.C. Westermann; photographers Berenice Abbott, William Eggleston, and Walker Evans; and pop artists Jim Dine, Claes Oldenburg, and James Rosenquist. The exhibition consists of four sections: Objects of Beauty, Material Illusions, Instruments of Satire, and Tools: An Extension of Self. **Caroline Guignard Community Gallery, June 1 - Aug. 28** - "Light Beings," featuring a new series of large-scale works from Pakistani artist Sana Arjumand. Steeped in mysticism and spirituality, Arjumand's current body of work focuses on the bird as an energetic being, a symbol suggesting the coexistence of higher dimensions. **Galleries 5 & 6, Ongoing** - "Modern & Contemporary Art from the Collection". Celebrating some of the CMA's greatest hits, this exhibition features over 30 paintings, drawings, photographs and sculptures from the Museum's collection that have not been on view recently. It offers the visitor experiences both serious and sensual and is designed to both entertain and enlighten. Notable works included are by Jasper Johns, Howard Thomas, Sally Mann and Edward Ruscha, whose famous image of the Hollywood Hills (on view) has become a staple of the art world. **Ray Taylor Fair Gallery, Ongoing** - Featuring a new and permanent installation of its ancient art collection. The installation includes approximately 50 objects that introduce the major ancient civilizations from the Mediterranean and Near East. Examples of the earliest form of writing from 12th century B.C. Mesopotamia, are shown next to Egyptian scarabs and Greek painted vessels. The world of the ancient Romans is represented by 2nd century

glass and bronze items and portrait sculpture. Many of these works have not been seen since the Museum moved to its location on Main Street in 1998. The collection has grown over the last several years with the donation of 12 fine Roman sculptures in 2002 from Pennsylvania collector Dr. Robert Y. Turner. Admission: Yes, but there is no admission charge on Sun. Hours: Tue.-Fri., 11am-5pm; first Fri., till 8pm; Sat., 10am-5pm & Sun., noon-5pm. Contact: 803/799-2810 or at ([www.columbiamuseum.org](http://www.columbiamuseum.org)).

**McKissick Museum**, University of South Carolina, USC Horseshoe, Columbia. **Through July 15** - "A Compass to Guide: South Carolina Cabinetmakers Today," focuses on contemporary cabinetmakers, their regional differences and similarities, and explore the roots of their respective traditions. The exhibition incorporates furniture from cabinetmakers actively practicing in South Carolina, as well as photographs and oral histories, exploring how these artists learned and what motivates them to work with wood as their primary medium. 18th and 19th century examples of South Carolina furniture are featured, reflecting the importance of historical context to the discussion of contemporary furniture traditions. **Ongoing** - "Diverse Voices: Discovering Community Through Traditional Arts". Dedicated to the late George D. Terry, "Diverse Voices" explores deeply-rooted traditions that help create and maintain the cultural landscape of South Carolina and the surrounding region. Each year the exhibit will focus on a specific theme or tradition. Year one of "Diverse Voices" offers a comprehensive presentation of objects from the museum collection that represent the work of celebrated NEA National Heritage Fellows and Jean Laney Harris Folk Heritage Award recipients. **Ongoing** - "Highlights from the Permanent Collections of McKissick Museum". **Permanent** - "Baruch Silver Collection," a collection of the Baruch family silver. And, "Natural Curiosity: USC and the Evolution of Scientific Inquiry into the Natural World". Hours: Mon.-Fri., 8:30am-5pm & Sat., 11am-3pm. Contact: 803/777-7251 or at (<http://artsandsciences.sc.edu/mcks/>).

**McMaster Gallery**, room 119, basement level, McMaster Building, 1615 Senate Street, University of South Carolina, corner of Pickens & Senate Streets, Columbia. **Through July 5** - "Prologue," includes work by Jamie Berry, Edmar Hernandez-Silen, Josh Knight, Chad Penner, and Jason Porter. This exhibition is a survey of works by current graduate students entering their final year of the Master of Fine Arts degree in Studio Art and Master of Arts degree in Media Arts at the University of South Carolina's School of Visual Art and Design. The wide variety of works include: drawing, illustration, painting, and sculpture. Hours: Mon.-Fri., 9am-4:30pm. Contact: Shannon Rae Lindsey, Gallery Director by e-mail at ([slindsey@email.sc.edu](mailto:slindsey@email.sc.edu)) or call 803/777-5752.

**Richland County Public Library**, 1431 Assembly St., Columbia. **Ongoing** - Featuring 20 pieces of public art on permanent display. Hours: Mon.-Fri., 9am-9pm; Sat, 9am-6pm; Sun, 2-6pm. Contact: 803/988-0886 or at ([www.richland.lib.sc.us](http://www.richland.lib.sc.us)).



Work by Osamu Kobayashi

**701 Center for Contemporary Art**, 701 Whaley St., Columbia. **Through July 2** - "Osamu Kobayashi: MOUND," presents Brooklyn, NY, painter and Columbia, SC, native Osamu Kobayashi's latest work in the solo exhibition Mound. From January - April this year, Kobayashi (b. 1984) experienced a homecoming of sorts as artist-in-residence at 701 CCA for three months. During that period, he created a new body of work for the exhibition. The work includes both small and extremely large paintings, the largest paintings Kobayashi has created to date. Hours: Wed., 11am-8pm; Thur.-Sat., 11am-5pm & Sun., 1-5pm. Contact: 803/238-2351 or at ([www.701cca.org](http://www.701cca.org)).

**SC State Museum**, 301 Gervais St., Columbia. **Ongoing** - "ART: A Collection of Collections." The SC State Museum is home to over 4,000 works of art, hand-made objects and various collections within its collection. Many of these pieces have never been on display in the museum.

ART: A Collection of Collections will highlight some of these one-of-a-kind collections within the museum's entire collection. Guests will get to explore works of fine, folk and decorative art made by South Carolina artists that are being grouped into collections within the exhibit based on medium, subject or artist. This exhibit will showcase rarely seen artwork by South Carolina artists, enhanced by the fascinating stories of their inception and why they belong with other works of art to give us a new look at South Carolina and its visual culture. **The Crescent Café**, second floor mezzanine of the Museum. The house menu offers a variety of baked goods, juices, coffee, hot chocolate and tea. Lunchtime offerings include deli sandwiches and alternating daily soups, as well as grilled chicken salads and sandwiches. And let's not forget the house specialty: spectacular fudge, handmade on-site. Museum Hours: Mon.-Sat., 10am-5pm ; Sun., 1-5pm. Admission: Yes. Contact: call 803/898-4921 or at (<http://scmuseum.org/>).

**ALTERNATE ART SPACES** - Columbia area **Columbia Metropolitan Convention Center**, 1101 Lincoln St., Columbia. **Ongoing** - Featuring works by local artists throughout the convention center, including works by Mike Williams, Liisa Salosaari Jasinski, Tyrone Geter, Peter Lenzo, Jamie Davis, Tom Lockart & Mark Woodham, Angela Bradburn, Virginia Scotchie, Denise Dent, Sue Grier, Brian Rego, Heather LaHaise, Howard Hunt, Robert Campbell, Ernest Lee, David J.P. Hooker, Ralph Waldrop, Elena Madden, Debbie Martin, Blue Sky, Laura Spong, Jean McWhorter, Claire Farrell, Justin Guy, and Jonathan Green. Hours: Mon.-Fri., 9am-5pm; Sat., 10am-4pm & Sun., 1-5pm. Contact: 803/545-0001 or at ([www.columbia-conventioncenter.com/phototour/phototour/](http://www.columbia-conventioncenter.com/phototour/phototour/)).

**Columbia Music Festival Association** (CMFA), 914 Pulaski Street, Columbia. **Ongoing** - Fiber and installation artist Susan Lenz has been given a unique opportunity to create new work for a solo exhibition at Waterworks Visual Arts Center in Salisbury, NC, which will be on view from Sept. 9, 2017 through Jan. 3, 2018. The show is called "In Stitches" and will mostly feature works from Lenz's "Stained Glass" and "In Box" fiber series. Waterworks' executive director, Anne Scott Clement challenged Lenz to approach the 24-foot back wall with a totally different series ... "CIRCLES", a celestial installation of orbs in response to the coming summer's total solar eclipse. In order to successfully create this installation, Lenz needed a large wall on which to hang the "work-in-progress". CMFA graciously provided their venue. Over the coming weeks, Lenz will be regularly adding new circles, standing back to evaluate the size and relationship between the objects, calculate the number of orbs needed, and experimenting with different finishing techniques. Hours: Mon.-Fri., 10am-6pm. For information e-mail to ([cmfasc5678@gmail.com](mailto:cmfasc5678@gmail.com)), call 803/771-6303 or call Lenz at 803/254-0923 or visit ([www.susanlenz.com](http://www.susanlenz.com)).

**Land Bank Lofts Gallery**, Federal Land Bank Building, 1401 Hampton Street, Columbia. **Through Aug. 29** - Featuring more than 400 works of art on exhibit include works by popular artists from around South Carolina: Ginny Merrett, CJ Martin-Marchese, Susan Johnson, Debbie Day, Jason Freeman, Kay Paschal, Rachel Myers, Charles Hite, Ty Davis, Renea Eshleman, Kathy Adams and Abstract Alexandra. **Ongoing** - Land Bank Lofts Gallery is growing as a large-scale center for exhibiting home-grown original art. In 2016, the South Carolina Artists group set out to create a gallery in the historic building constructed in 1924. Home to the famous "Tunnel Vision" & "Haystacks" murals, the as it was originally known has been completely transformed into a modern masterpiece for today's lifestyle. Hours: call for hours. Contact: call 803/828-7790 or South Carolina Artists by calling 803/602-4814 or at (<http://www.southcarolinaartists.com>).

**Still Hopes Retirement Community Gallery**, Marshall A. Shearouse Center for Wellness, One Still Hopes Drive, West Columbia. June 5 - July 28 "7th Annual Juried Art Show & Sale," featured by the Trenholm Artists Guild. A reception will be held on June 6, from 6-8pm. Hours: daily from 10am-6pm. Contact: 803/796-6490 or at (<https://www.stillhopes.org>).

## Due West

**Bowie Arts Center**, Bonner St., Erskine College, Due West. **Ongoing** - Permanent Collections, 19th c. furniture, cut-glass, clocks and decorative arts. Also, 19th & early 20th c. music boxes & mechanical musical instruments. Hours: M-Th, 1-4:30pm or by appt. Contact: 864/379-8867.

## Elloree

**Elloree Heritage Museum and Cultural Museum**, 2714 Cleveland Street, Elloree. **Ongoing** - Stroll Cleveland Street as it appeared in

continued on Page 43